

July 5, 2019

Announcements

New Breast Surgeon at Lawrence + Memorial

Dr. Nita Ahuja and I are pleased to announce that **Dr. Gregory Zanieski** recently joined the Yale School of Medicine Department of Surgery and will care for patients with breast cancer at Lawrence + Memorial Hospital in



New London, in collaboration with the Smilow Cancer Hospital Care Center in Waterford. Dr. Zanieski is a graduate of Boston University and received his Medical Degree from the State University of New York at Stony Brook School of Medicine. He completed his residency at New York Methodist Hospital and a fellowship in surgical oncology at the University of Pittsburgh Medical Center.

Prior to joining Yale, Dr. Zanieski practiced breast surgery at Vassar Brothers Medical Center in

from the desk of
Charles S. Fuchs, MD, MPH
Director, Yale Cancer Center
and Physician-in-Chief
Smilow Cancer Hospital

Yale
NewHaven
Health
Smilow Cancer
Hospital

Yale **CANCER CENTER**
A Comprehensive Cancer Center Designated
by the National Cancer Institute

[News Center](#)

Poughkeepsie, NY, where he cared for patients using all current breast surgical techniques, including breast conservation and immediate breast reconstruction, in collaboration with plastic surgery. Additionally, he oversaw several breast cancer clinical trials.

Please join Dr. Zanieski, along with Dr. Jane Kanowitz and Dr. Meena Moran, and the entire Waterford Care Center, for an Open House on Tuesday, July 16 from 5-6pm at the Care Center.

[Learn More >>](#)

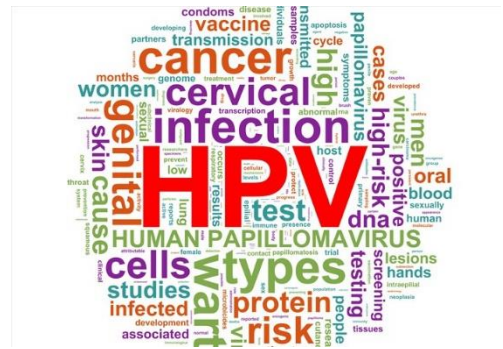
Armand Russo Joins North Haven Care Center

I am pleased to announce that Armand V. Russo, MD, has been appointed an Assistant Professor of Clinical Medicine (Medical Oncology) at Yale Cancer Center and is now caring for patients at the Smilow Cancer Care Center in North Haven.



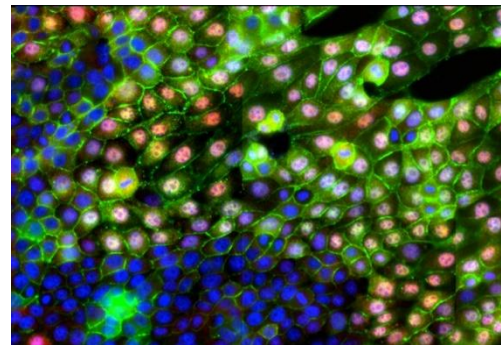
Dr. Russo recently completed his residency and fellowship through Yale New Haven Hospital and Yale Cancer Center's Hematology-Oncology Fellowship Program.

Dr. Russo received his Medical Degree from the Geisel School of Medicine at Dartmouth; he is a graduate of Swarthmore College. Dr. Russo is a member of the American College of Physicians, the



Yale Cancer Center partners in fight to help eliminate HPV-related cancers

[Read More >>](#)



Yale scientists discover molecular key to how cancer spreads

[Read More >>](#)



Thyroid Cancer Survivor Prepares to Ride in Third Closer to Free

[Read More >>](#)

American Society of Hematology, and the American Society of Clinical Oncology.

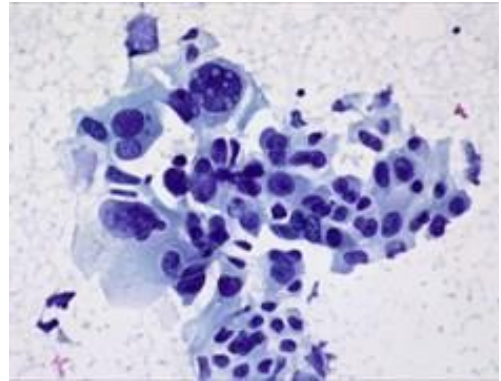
Joyce Tull Named Director of CTO

Please join me in welcoming Joyce Nancarrow Tull, RN, BSW, MSN, CCRP, as Director of our Clinical Trials Office (CTO) and Assistant Director for Clinical Sciences. Joyce's experience and leadership in clinical research and management is a great asset for our team. Most recently, Joyce was the Associate Director of Clinical Investigations Support Office at USC Norris Comprehensive Cancer Center in Los Angeles, and she previously served as a Clinical Research Nurse Manager at City of Hope and Administrative Director of the Clinical Trials Office at The Ohio State University Comprehensive Cancer Center.

Joyce's success and experience in leading clinical trial operations at major Cancer Centers and developing new processes to accelerate progress in clinical research will be invaluable to our community at Yale and Smilow. I look forward to her leadership and guidance as our clinical trials operation continues to expand with additional opportunities for trials, newly achieved records for the number of patients cared for on trial, and expanded access through our Smilow Cancer Hospital Network.

Notables

Roy S. Herbst, MD, PhD, Chief of Medical Oncology, Ensign Professor of Medicine, and Associate Director for Translational Medicine, has been named to the **Board of Directors** for the **International Association for the Study of Lung Cancer** (IASLC). He will assume his four-year term at the upcoming IASLC 2019 World Conference on Lung Cancer in Barcelona in September.



Cancer Cure 2019: Immunotherapy Drug Under Research Shows Promising Result for Lung Cancer Patients

[Read More >>](#)



Immunotherapy Drug Shows Potential to Cure Advanced Lung Cancer

[Read More >>](#)



AACR Congressional Briefing on E-cigarettes and Youth

[Read More >>](#)

Karen Reyes-Benzi, RN, was awarded the Yale New Haven Hospital Magnet Nurse of the Year award this week! Karen is a nurse in the infusion suite on NP7 in our Hematology Outpatient clinic and is a 26 year Navy Veteran. She is passionate about her fellow military comrades and has enrolled countless patients in the Veteran Affairs system to obtain benefits. Some have qualified for compensation for service related diagnoses. Thank you, Karen, for your excellent care and dedication!



Ena Williams with Karen

Ellen F. Foxman, MD, PhD, Assistant Professor Laboratory Medicine and a member of Yale Cancer Center's Virus and Other Infection-associated Cancers Research Program, was named a **2019 Hartwell Investigator**. She will receive support for three years at \$100,000 direct cost per year for research funding for a *Novel Diagnostic Test to Reduce Antibiotic Overuse*.

Ranjit Bindra, MD, PhD, Associate Professor of Therapeutic Radiology, and **Patricia LoRusso, DO**, Professor of Medicine (Medical Oncology) and Associate Director of Experimental Therapeutics, have received a grant from the **Rising Tide Foundation** for \$450K to support funding for biomarkers for their phase I clinical trial testing olaparib against IDH1/2-mutant cancers. Dr. LoRusso is the lead PI of the clinical trial, and Dr. Bindra is the co-PI. The clinical trial is directly translating basic science work from the Glazer and Bindra labs to clinical research through our Phase I Clinical Trial Program.



June is Men's Health Month

[Read More >>](#)

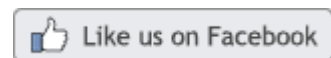


More women in U.S. receive 3-D mammography but disparities remain

[Read More >>](#)



Join Smilow Cancer Hospital on Facebook



Latest Posts:

On Sunday, June 23, pediatric cancer survivors and their families joined Yale Cancer Center,

The Tommy Fund, and Yale New Haven Children's Hospital for a celebration of

Peter Tattersall, PhD, Professor of Laboratory Medicine and Genetics and a member of Yale Cancer Center's Virus and Other Infection-associated Cancers Research Program, has received a two year R21 grant from the **National Cancer Institute** for \$400k in funding to pursue studies on *Armed Oncolytic Parvoviral Vectors for Modulating the Tumor Microenvironment*.

Roy S. Herbst, MD, PhD and **Lieping Chen, MD, PhD**, participated in the 2019 China Cancer Immunotherapy Workshop last week on behalf of Yale Cancer Center.



Development Update

A huge thank you to Roberta Lombardi, Founder and President of Infinite Strength, a Madison, CT organization devoted to breast cancer patient needs and assistance, who presented a check for \$53,000 from proceeds of their recent Evening In Pick Gala. The donation will support scalp cooling during treatment, oncology social work, fertility preservation support, and other needs for breast cancer patients.

Survivorship at Edgerton Park in Hamden. Families enjoyed fun, games, and ice cream on the beautiful summer day.



[Read More >>](#)

Learn how The Frederick A. DeLuca Foundation is helping our hematologists transform research for blood malignancies to benefit our patients, and patients



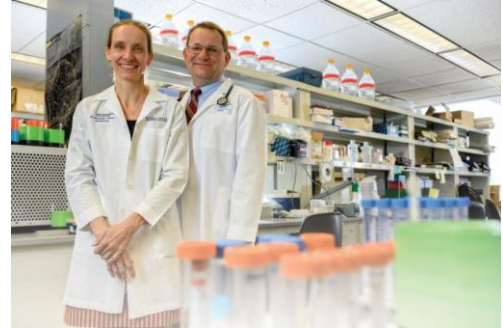
From l to r: Camille A. Servodidio, Program Manager for Women's Oncology Services; Roberta Lombardi; Sarah Mougalian, MD; and Bonnie Indeck, Manager, Oncology Social Work.

Employee Profile: Shelley Jolie

After 26 years at Yale New Haven Hospital, Shelley Jolie is retiring today. Although she will remain a familiar face to us at our annual Closer to Free Ride and we hope throughout the year, her daily presence and impact in Smilow will be greatly missed. Shelley's contributions to Smilow Cancer Hospital and the greater Yale New Haven Hospital community will always be valued and remembered.



throughout the world, beginning with research by Dr. Stephanie Halene and Dr. Nikolai Podoltsev, with the launch of The DeLuca Center for Innovation in Hematology Research at Yale.



[Read More >>](#)

Did you know Smilow Cancer Hospital has an Extended Care Clinic for our patients? The Clinic is open 16 hours a day, from 7 a.m. to 11 p.m. Nurse Manager Maureen Raucci explains that the goal of the clinic is to help reduce emergency room visits.



[Read More >>](#)

Dr. Veronica Chiang joined Dr. Anees Chagpar on Yale Cancer Answers on Connecticut Public Radio to discuss gamma knife treatment for patients with brain metastases. Tune in to listen online or download the podcast from

Shelley joined the YNHH family in 1993 as a staff nurse on EP 6-5 caring for surgical oncology patients. She quickly became a strong advocate for patient and families and was recognized by leadership and her peers, receiving the Nurse of the Year Award in 1999 and Clinical Expertise Award 1999 & 2001.

In 2001, she moved to a position as Nurse Coordinator for the Head and Neck Cancer Program in Smilow Cancer Hospital, focusing on coordination of patients and families across the care continuum. Shelley identified the need for improved and standardized patient education and with her physician partners developed a web based educational site for our surgical otolaryngology patients. During her service as the Head and Neck Coordinator, Shelley conceived of and implemented the first Free Head and Neck Annual Cancer Screening in 2006, which continued annually for eleven years, screened thousands, and identified multiple H&N cancers.

In 2010, Shelley changed her career focus to management and started as an Assistant Patient Service Manager establishing a nursing leadership presence in Radiation Oncology and in 2012 she was promoted to the Patient Service Manager. Shelley has developed a strong and talented regional nursing team and standardized nursing practice in radiation oncology for Smilow. Throughout her years at YNHH Shelley has also been involved in many organizational initiatives focusing on safety and quality, patient and family experience, and staff engagement and recognition.

Shelley has also volunteered for the past eight years in the "Closer to Free" annual cycling event as a Ride Marshall and plans to continue for years to come. She is one of the smiling faces that everyone has come to expect at the Closer to Free Ride!

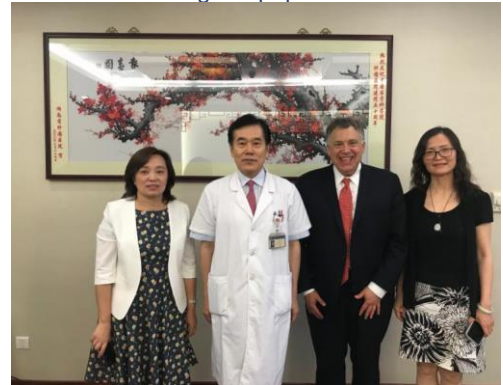
In retirement, Shelley and her husband look forward to spending more time with their children and grandchildren, traveling and scuba diving

iTunes.



[Read More >>](#)

Dr. Roy Herbst, associate director for translational research and chief of medical oncology, and Dr. Yawei Zhang, co-director of global oncology, recently visited China's National Cancer Institute to discuss collaborations and research projects opportunities to study cancer prevention and control among our populations.



[Read More >>](#)

across the globe. We recognize and thank Shelley for her endless dedication to our patients and to her colleagues.

Funding Opportunities

NCCN/AstraZeneca Quality of Care & Clinical Care Pathways in Unresectable Stage III/Stage IV Non-Small Cell Lung Cancer

National Comprehensive Cancer Network® (NCCN®) is pleased to announce that it is collaborating with AstraZeneca Pharmaceuticals (AstraZeneca) to offer a new opportunity to improve patient care and outcomes in advanced non-small cell lung cancer (NSCLC).

The intent of this RFP is to encourage NCCN Member Institutions to submit LOIs describing concepts for developing, implementing, and evaluating healthcare provider performance and/or healthcare quality improvement initiatives to enhance patient care and outcomes in unresectable stage III NSCLC patients and stage IV NSCLC patients receiving first line therapy.

Letter of Intent (LOI) Deadline: July 9, 2019

[Learn More >>](#)

Susan G. Komen Career Catalyst Research Grant


The topic area for the FY20 Career Catalyst Research Award is Redefining Metastatic Breast Cancer through Liquid Biopsy. The goal of this focus area is to support outstanding research seeking to use liquid biopsy techniques to improve treatment, detection, and understanding of metastatic breast cancer which will lead to a reduction in breast cancer deaths by 2026. Komen requests Letters of Intent for research projects that address one of the following focus areas:


- * Refining treatment of metastatic breast cancer
- * Early detection of metastatic breast cancer


Letter of Intent Deadline: July 10, 2019


Follow Yale Cancer Center on Twitter


Follow us on 


 Before you hit the pool or the beach for the fourth of July holiday, know how to protect yourself from #skincancer when you're out in the sun and understand how to spot this potentially deadly disease!


 Congratulations to @DrRoyHerbstYale! Dr. Herbst was elected to the @IASLC Board of Directors for a four-year term starting in September.

 Watch and share important highlights from @drroyherbstyale and Dr. Suchitra Krishnan-Sarin at @AACR's congressional briefing on #ecigarettes and youth.

 Every year #HPV is linked to #Cancer in more than 33,000 men and women in the US. We're partnering with the @AACI_Cancer today to endorse a Call to Action to help eliminate HPV-related cancers.

 Thanks to groundbreaking research led by @DanielPetrylak and others, the @NCCN just released its first ever guidelines for #bladdercancer

 Today's Grand Rounds moderated by @drroyherbstyale features speaker Dr. Nilofer Azad @HopkinsMedicine talking about #Epigenetic Therapy in Solid Tumors.

 Dr. Veronica Chiang will join Dr. Anees Chagpar on Yale Cancer Answers tonight at 7:30pm on @wnpr to discuss gamma knife treatment for patients with brain metastases. Tune in to listen live, or download the podcast from iTunes later this week.

[Learn More >>](#)

Imaging, Biomarkers and Digital Pathomics for the Early Detection of Premetastatic Aggressive Cancer

This Funding Opportunity Announcement (FOA) will support the development of state-of-the-art projects that include imaging, biomarkers, digital pathomic and other -omic integration strategies for improving current approaches for the earliest detection of premetastatic aggressive cancer as well as identifying precancerous lesions that will subsequently demonstrate an aggressive phenotype.

Application Deadline: July 10, 2019

[Learn More >>](#)

Gabrielle's Angel Foundation for Cancer Research

The Foundation funds cutting-edge research in the fields of leukemia, lymphoma, and related cancers of the blood. Funds support promising scientists who are applying novel and state-of-the-art techniques to address fundamental problems in their genesis and treatment. Of interest are innovative clinical and basic science research that will lead to novel therapeutic approaches that could replace, or be used in combination with existing effective therapies. Focus is on projects for cancer prevention, detection and treatment that are most likely to be translated into clinical trials within a 3-5 year period.

Application Deadline: July 16, 2019


[Learn More >>](#)


Tobacco Regulatory Science

The purpose of this Funding Opportunity Announcement (FOA) is to invite R01 applications to support biomedical and behavioral research that will provide scientific data to inform regulation of tobacco products to protect public health.

Application Deadline: July 19, 2019

[Learn More >>](#)

 Did you know Smilow Cancer Hospital has an Extended Care Clinic for #cancer patients? It's one of only a few nationwide! Nurse Manager Maureen Raucci explains the goal of the clinic is to help reduce emergency room visits.

 It's #CancerImmunotherapyMonth. Our researchers are at the forefront of groundbreaking #immunotherapy discoveries like #CARTcell to help treat adult and pediatric patients with #cancer.

Calendar

Yale Cancer Answers

July 7; 7:30 PM

WNPR

CAR T-Cell Therapy

Iris Isufi, MD

[Learn More >>](#)

Therapeutic Radiology Grand Rounds

July 11; 9:00 AM

Smilow Cancer Hospital, North Pavilion,
Lower Level, LL505

New Technologies in Radiation Oncology

Brian Wang, PhD, FAAPM

[Learn More >>](#)

Cancer Genetics and Prevention Program Seminar

July 11; 2:30 PM

Orchard Medical Center, 107-109

[Learn More >>](#)

Hematology Research Seminar Series

July 12; 11:45 AM

Brady Memorial Laboratory, Brady
Auditorium

FLT3 and AML

Mark Levis, MD

[Learn More >>](#)

Smilow Screening & Prevention Informational Table

NCCN/AstraZeneca Quality of Care Evaluations in Advanced Ovarian Cancer

National Comprehensive Cancer Network® (NCCN®) is pleased to announce that it is collaborating with AstraZeneca Pharmaceuticals (AstraZeneca) to offer a new funding opportunity for improving patient care and outcomes in Stage III, Stage IV and recurrent epithelial ovarian cancer (EOC). The intent of this RFP is to encourage investigators at NCCN Member Institutions to submit letters of intent (LOIs) describing concepts for developing, implementing, and evaluating initiatives to improve patient outcomes in Stages III/IV and recurrent EOC. Studies aimed at enhancing the quality of multiple aspects of patient interaction and management throughout the clinical care continuum will be eligible. Special consideration will be given to "outside the box" innovative projects, with a special focus on optimizing testing and effectiveness of new healthcare-related paradigms.

Application Deadline: July 22, 2019

[Learn More >>](#)

Provocative Questions (PQs) in Cancer with an Underlying HIV Infection (R01 Clinical Trial Optional)

The purpose of this FOA is to continue advancing our understanding of the risks, development, progression, diagnosis, and treatment of malignancies observed in individuals with an underlying HIV infection or AIDS.

Application Deadline: August 1, 2019

[Learn More >>](#)

Enhancing Academic-Community-Patient Partnerships in Metastatic Breast Cancer Care

National Comprehensive Cancer Network® (NCCN®) is pleased to announce that it is collaborating with Pfizer Global Medical Grants (Pfizer) to offer a new grant opportunity for improving care for patients with metastatic breast

July 13; 12:00 PM

36 Beechwood Avenue, Bridgeport

Full Gospel Pentecostal COGIC, 8th Annual Community Day Event

[Learn More >>](#)

Yale Cancer Answers

July 14; 7:30 PM

WNPR

Richard Frisbee Foundation/Art Bags for Kids

Christine and Richard Frisbee

[Learn More >>](#)

Chalk Talk

July 16; 1:30 PM

Hope Memorial Building, H-110

Creating a Community for Immunotherapy Progress

Jedd D. Wolchok, MD, PhD, FASCO

[Learn More >>](#)

Smilow Waterford Care Center Open House

July 16; 5:00 PM

230 Waterford Parkway South, Waterford, CT

[Learn More >>](#)

Therapeutic Radiology Grand Rounds

July 11; 9:00 AM

Smilow Cancer Hospital, North Pavilion, Lower Level, LL505

Identification and Interventions for High Risk Patients with Abuse/Neglect, Mental Health and Alcohol/Substance Abuse Needs

Mary Strauss, LCSW, OSW-C and Jennifer Cohen, LCSW

[Learn More >>](#)

Epithelium-derived Alarmins Role in Cancer Immunoprevention

July 18, 10:30 AM

The Anlyan Center, TAC N-107

Shadmehr (Shawn) Demehri

[Learn More >>](#)

cancer (MBC). The intent of this RFP is to encourage investigators at NCCN Member Institutions to submit proposals describing concepts for developing best practices and collaborative oncology care models between academic centers and referring community providers. The overarching goal is to leverage the expertise and resources of NCCN-designated cancer centers to improve quality and outcomes across the continuum of care for all MBC patients.

Application Deadline: August 28, 2019

[Learn More >>](#)

Recent Publications

Changing frameworks in treatment sequencing of triple-negative and HER2-positive, early-stage breast cancers

Pusztai L, Foldi J, Dwahan A, DiGiovanna M, Eleftherios P, Mamounas M.

The Lancet Onc. 2019 Jul; Vol 20; issue 7.

[Read More >>](#)

DNA requirement in FANCD2 deubiquitination by USP1-UAF1-RAD51AP1 in the Fanconi anemia DNA damage response.

Liang F, Miller AS, Longerich S, Tang C, Maranon D, Williamson EA, Hromas R, Wiese C, Kupfer GM, Sung P.

Nat Commun. 2019 Jun 28;10(1):2849.

[Read More >>](#)

LSH interacts with and stabilizes GINS4 transcript that promotes tumorigenesis in non-small cell lung cancer.

Yang R, Liu N, Chen L, Jiang Y, Shi Y, Mao C, Liu Y, Wang M, Lai W, Tang H, Gao M, Xiao D, Wang X, Yu F, Cao Y, Yan Q, Liu S, Tao Y.

J Exp Clin Cancer Res. 2019 Jun 28;38(1):280.

[Read More >>](#)

Utility of a ready-to-use PCR system for neuroendocrine tumor diagnosis.

Cancer Genetics and Prevention Program Seminar

July 18; 2:30 PM

Orchard Medical Center, 107-109

[Learn More >>](#)

Yale New Haven Health Greenwich Hospital Presents

July 18; 6:00 PM

Greenwich Hospital, Noble Conference Center

Immunotherapy: Harnessing personalized Treatment for Cancer

Barry Boyd, MD

[Learn More >>](#)

Submissions

Please submit your recent publication and grant announcements to:

Renee Gaudette

Director, Public Affairs and Communications

Kidd M, Drozdov IA, Matar S, Gurunlian N, Ferranti NJ, Malczewska A, Bennett P, Bodei L, Modlin IM.

PLoS One. 2019 Jun 27;14(6):e0218592.

[Read More >>](#)

Observational Study Examining the Diagnostic Practice of Ki67 Staining for Melanocytic Lesions.

Vyas NS, Charifa A, Desman GT, Goldberg M, Singh R, Phelps RG, McNiff JM.

Am J Dermatopathol. 2019 Jul;41(7):488-491

[Read More >>](#)

Is robotic surgery an option for early T-stage laryngeal cancer? Early nationwide results.

Hanna J, Brauer PR, Morse E, Judson B, Mehra S.

Laryngoscope. 2019 Jun 24.

[Read More >>](#)

Anaplastic Lymphoma Kinase Confers Resistance to BRAF Kinase Inhibitors in Melanoma.

Janostiak R, Malvi P, Wajapeyee N.

iScience. 2019 Jun 28;16:453-467.

[Read More >>](#)

Single-cell Analysis of CAR-T Cell Activation Reveals A Mixed TH1/TH2 Response Independent of Differentiation.

Xhangolli I, Dura B, Lee G, Kim D, Xiao Y, Fan R.

Genomics Proteomics Bioinformatics. 2019 Jun 20.

[Read More >>](#)

Genome wide analysis of 3' UTR sequence elements and proteins regulating mRNA stability during maternal-to-zygotic transition in zebrafish.

Vejnar CE, Abdel Messih M, Takacs CM, Yartseva V, Oikonomou P, Christiano R, Stoeckius M, Lau S, Lee MT, Beaudoin JD, Musaev D, Darwich-Codore H, Walther TC, Tavazoie S, Cifuentes D, Giraldez AJ.

Genome Res. 2019 Jun 21.

[Read More >>](#)

Pathogenic Autoreactive T and B Cells Cross-React with Mimotopes Expressed by a Common Human Gut Commensal to Trigger Autoimmunity.

Ruff WE, Dehner C, Kim WJ, Pagovich O, Aguiar CL, Yu AT, Roth AS, Vieira SM, Kriegel C, Adeniyi O, Mulla MJ, Abrahams VM, Kwok WW, Nussinov R, Erkan D, Goodman AL, Kriegel MA.

Cell Host Microbe. 2019 Jun 17.

[Read More >>](#)

One plus one does not always equal two, especially with regard to hypomethylating agents: the question of synergy of azacitidine and lenalidomide for treatment of relapsed acute myeloid leukemia and myelodysplastic syndromes post allogeneic hematopoietic stem cell transplant.

Bewersdorf JP, Stahl M, Zeidan AM.

Expert Rev Hematol. 2019 Jun 26:1-4.

[Read More >>](#)

Dickkopf1: An immunomodulatory ligand and Wnt antagonist in pathological inflammation.

Chae WJ, Bothwell ALM.

Differentiation. 2019 Jun 12. pii: S0301-4681(19)30006-4.

[Read More >>](#)