

October 29, 2021

Announcements

Eric P. Winer, MD, Named Director of Yale Cancer Center and Physician-in-Chief of Smilow Cancer Hospital

from the desk of
Nita Ahuja, MD, MBA, FACS
Interim Director, Yale Cancer Center
Interim Physician-in-Chief,
Smilow Cancer Hospital

Yale
NewHaven
Health
Smilow Cancer
Hospital

Yale **CANCER**
CENTER
A Comprehensive Cancer Center Designated
by the National Cancer Institute

Yale School of Medicine and Yale New Haven Health have announced that Eric P. Winer, MD, will join us as the next Director of Yale Cancer Center and Physician-in-Chief of Smilow Cancer Hospital at Yale New Haven, effective February 1, 2022. An internationally renowned expert in breast cancer, Dr. Winer is currently the Thompson Chair in Breast Cancer Research, Chief Clinical Development Officer, and Senior Vice President for Medical Affairs at Dana-Farber Cancer Institute and Professor of Medicine at Harvard Medical School.

Dr. Winer has published over 350 original manuscripts and has served as the principal investigator of a National Institutes of Health-funded SPORE in Breast Cancer for the last 10 years. He is president-elect of the American Society of Clinical Oncology and a member of the Scientific Advisory Board of the Breast Cancer Research Foundation. For over a decade, he served as chief scientific advisor and chair of the Scientific Advisory Board for Susan G. Komen for the Cure. He currently co-leads the National Cancer Institute Breast Cancer Steering Committee.

Dr. Winer is an alumnus of both Yale College and Yale School of Medicine.

After receiving his medical degree in 1983, he completed training in internal

News Center

In Pilot Program, Yale Offers Next-Day Access to Cancer Diagnoses



[Read More](#)

medicine, serving as chief resident at Yale New Haven Hospital. He completed a fellowship in hematology/oncology at Duke University School of Medicine and served on the Duke faculty from 1989 to 1997, before joining Dana-Farber and Brigham and Women's Hospital.

[Learn More](#)

Marcella Nunez-Smith, MD, MHS, Elected to the National Academy of Medicine

We are honored to announce that Marcella Nunez-Smith, MD, MHS, has been elected to the prestigious National Academy of Medicine. Dr. Nunez-Smith is Associate Dean for Health Equity Research, C.N.H. Long Professor of Medicine and Epidemiology, and Professor of Medicine, Public Health, and Management. At Yale Cancer Center she is Director of the Center for Community Engagement and Health Equity and Chief Health Equity Officer for Smilow Cancer Hospital. Her research focuses on promoting health and health care equity for structurally marginalized populations, with a focus on centering community engagement, supporting health care workforce diversity and development, developing patient-reported measurements of health care quality, and identifying regional strategies to reduce the global burden of non-communicable diseases.



Dr. Nunez-Smith is among 100 new NAM members who were selected for their important contributions to health, medicine, and science. She joins 54 other faculty members from Yale who have been elected to NAM.

Ehud Mendel, MD, MBA, Appointed Director of Spine Oncology Program

We are pleased to announce that Ehud Mendel, MD, MBA, has been appointed a Professor of Neurosurgery and Director of the Spine Oncology Program at Smilow Cancer Hospital. Dr. Mendel joined Yale School of Medicine from Wexner Medical Center at The Ohio State University (OSU) and the James Cancer Hospital Solove Research Institute, where he served as Director of the Spine Oncology Program and clinical director of the Ohio State University Spine Research Institute.

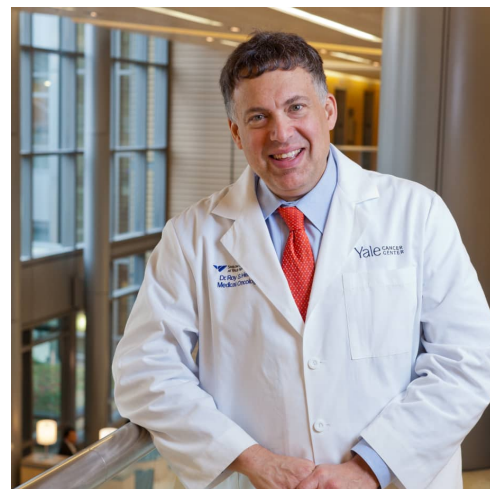


Liver Cancer Awareness Q&A with Ariel Jaffe, MD

A promotional graphic for liver cancer awareness. On the right is a portrait of Ariel Jaffe, MD, a woman with dark hair, smiling. On the left is a green background with white text: "It is imperative for patients and providers to understand that liver cancer is preventable, and understanding the risk factors for this disease and treating them early on should be the primary focus." Below the quote is a green pill-shaped box with "Ariel Jaffe, MD" and a hashtag "#livercancerawarenessmonth". At the bottom left is the YaleNewHavenHealth Smilow Cancer Hospital logo, and at the bottom right is the Yale Cancer Center logo with a green ribbon.

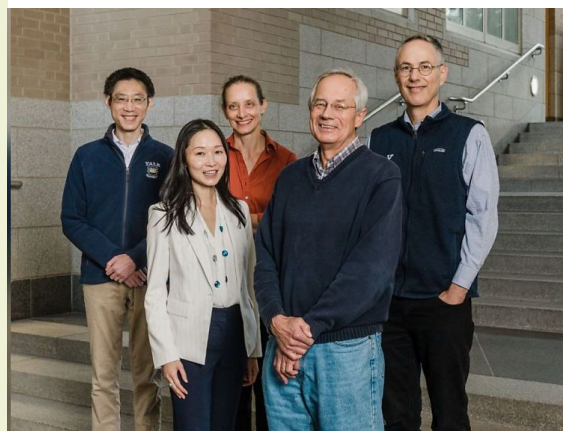
[Read More](#)

Why Are Women Who Never Smoked Getting Lung Cancer?



[Read More](#)

Tissue Mapping Center for Cellular Senescence Launched at Yale Cancer Center to Study Human Lymphoid Organs



[Read More](#)

Yale Cancer Center Study Shows New

While at OSU, Dr. Mendel led a multidisciplinary team that made incredible advances in oncological spine surgery. Among many things, his team pioneered a new surgical technique to reconstruct the spine following surgery to remove spinal tumors and has developed numerous research protocols for treating spine tumors and innovative spine surgery techniques.

An honors graduate from Louisiana State University School of Medicine in New Orleans, Dr. Mendel also holds an MBA from The Ohio State University Max M. Fisher College of Business. He completed his residency at the University of Southern California Medical Center and a fellowship in reconstructive spinal surgery-combined neurosurgery/orthopedics at the University of Florida School of Medicine.

Closer to Free Raises \$2.1 Million

Thanks to the incredible support of our Closer to Free riders, donors, and volunteers on September 11, more than \$2.1 million was raised to support patient care at Smilow Cancer Hospital and research at Yale Cancer Center and bring us Closer to Free! Those funds fuel the lifesaving and life-changing work of Smilow Cancer Hospital and Yale Cancer Center. Thank you to the 2,100 riders who participated in this year's event. Please take a moment to watch our recap video of 2021's journey.

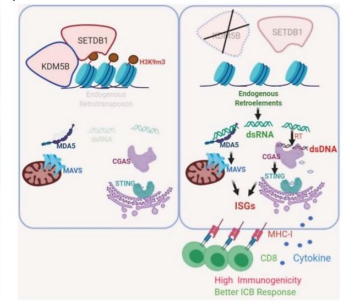


Center for Breast Cancer Launched

We are pleased to announce the launch of the Center for Breast Cancer, led by Maryam Lustberg, MD, MPH. This new Center will build off the success of our Breast Program and The Breast Center at Smilow Cancer Hospital to continue to achieve excellence in clinical practice, research innovation, and advancement of trainees in breast oncology throughout the Smilow Cancer enterprise.

Dr. Lustberg will be joined by a multispecialty Leadership Cabinet and Program Leaders to advance important scientific and clinical priorities in breast cancer uniquely relevant to our catchment area population, the residents of Connecticut. Our research innovations will flourish while we simultaneously ensure we are providing the very best in cancer care to our patients throughout the Smilow Cancer Hospital Network and each of the Yale New Haven Health delivery networks.

Strategy to Boost Immune System to Fight Melanoma



[Read More](#)

Dr. Mariya Rozenblit Shares Why She's a Breast Cancer Physician and Scientist



"We honor our patients' courage and strength. There is no right or wrong way to cope with this diagnosis and we are here to help our patients in any way that we can."



Mariya Rozenblit, MD

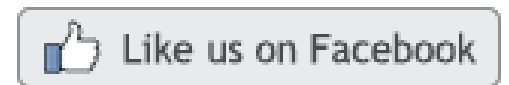
YaleNewHavenHealth
Smilow Cancer Hospital

Yale
CANCER CENTER
A Comprehensive Cancer Center Designated by the National Cancer Institute

[Read More](#)



Join Smilow Cancer Hospital on Facebook



"We can offer cutting edge therapies to a greater number of patients who would not have qualified for these treatments as recently as last year."

Dr. Julius Chapiro talks about #LiverCancerAwarenessMonth.

"Because of recent rapid advances, we can offer cutting edge



Cabinet Members:

Kerin Adelson – *Medical Oncology*
Javin Brita – *APP/Survivorship*
Neal Fischbach – *Medical Oncology*
Monica Fradkin – *Patient Care Services*
Alfonsina Fraschilla – *Surgery Administration*
Alyssa Gillego – *Surgical Oncology*
Mehra Golshan – *Surgical Oncology*
Rachel Greenup – *Surgical Oncology*
Susan Higgins – *Radiation Oncology*
Regina Hooley – *Radiology & Biomedical Imaging*
Jane Kanowitz – *Medical Oncology*
Uma Krishnamurti – *Pathology*
Robert Legare – *Medical Oncology*
Maryam Lustberg – *Medical Oncology*
Melanie Lynch – *Surgical Oncology*
Meena Moran – *Radiation Oncology*
Sarah Mougalian – *Medical Oncology*
Victoria Murtha – *Patient Care Services*
Bohdan Pomahac – *Plastic & Reconstructive Surgery*
Lajos Pusztai – *Medical Oncology*
Tara Sanft – *Medical Oncology*
Camille Servodidio – *Women's Services*
Lisa Shomsky – *Patient Care Services*
Qin Yan – *Pathology*

Program Leaders:

Jane Kanowitz, Elizabeth Berger – *Breast Cancer in Geriatrics*
Tara Sanft, Javin Brita – *Breast Cancer Survivorship*
Sarah Mougalian, Rachel Greenup, Anca Bulgaru – *Breast Cancer in Young Adults*
Lajos Pusztai, Qin Yan – *Breast Translational Research*
Andrea Silber, Maryam Lustberg – *Health Equity in Breast Cancer/Liaison to CEHE*
Navid Hafez – *Phase I in Breast Cancer*
Tristen Park, Christin Knowlton – *Locoregional Therapy*

Notables

Stand Up To Cancer (SU2C) has announced the Stand Up To Cancer–Fanconi Anemia Research Fund–Farrah Fawcett Foundation Head and Neck Cancer Research Team. Co-led by **Barbara Burtness, MD**, Professor of Medicine (Medical Oncology), Interim Associate Cancer Center Director for Diversity, Equity and Inclusion, and Co-Leader, Developmental Therapeutics Program, the team will concentrate on new approaches to address head and neck squamous cell carcinoma, with an emphasis on cancers related to the human papillomavirus and Fanconi anemia. The SU2C grant includes \$3.25 million in support over three years.

Jamie and Tiva Lovemark, on behalf of their Foundation, have once again

donated \$150,000 to the Lovemark Fund at Smilow Cancer Hospital. Since its inception, **the Lovemark Foundation** has graciously donated nearly a half a million dollars to Smilow Cancer Hospital to support our patients with brain tumors during their treatment.

therapies to a greater number of patients who would not have qualified for these treatments as recently as last year."

Julius Chapiro, MD

#livercancerawarenessmonth

YaleNewHavenHealth
Smilow Cancer Hospital

Yale
CANCER
CENTER
A Comprehensive Cancer Center Designated
by the National Cancer Institute

[Read More](#)

Understanding Neuroendocrine Tumors:
New Treatment Advances and Innovations



Smilow Shares
TUESDAY, NOVEMBER 9 | 7:00PM
Understanding NETs:
New Treatment Advances
9
TUESDAY, NOVEMBER 9, 2021 AT 7 PM
Smilow Shares: Understanding NETs
Online Event

[Read More](#)

October is Breast Cancer Awareness Month. About 5-10% of all breast cancers have an underlying hereditary cause. Understanding whether you have a hereditary predisposition to breast cancer can empower you to make decisions about increased screening and risk-reduction and provide helpful information for your family members. This month, the Smilow Cancer Genetics and Prevention Program shares information about known hereditary causes of breast cancer.



About 5-10% of all breast cancers have an underlying hereditary cause.

[Read More](#)

Renee Moye, APRN, one of the outstanding members of our Smilow Cancer Hospital Care Center team in Fairfield, was awarded the **Tai-Jaih Davis “Caretaker” Award** by the **Sister Girl Foundation** in recognition of her service to our patients and her community with compassion, tenacity, and dedication during the COVID-19 pandemic. The Award is sponsored by the **American Cancer Society Making Strides Against Breast Cancer Walk** and was presented to Renee on October 17 at the annual walk at Sherwood Island.

Kaelyn Sumigray, PhD, Assistant Professor of Genetics, has received an **American Cancer Society Research Scholar Award** to support her research grant, “Epithelial-stromal interactions in intestinal polyposis.” Dr. Sumigray’s lab studies how tissue architecture affects stem cell behaviors, using the mouse intestine as a model. In this project, Dr. Sumigray and her team aim to understand how changes in fibroblast signaling induce local changes to tissue structure to support intestinal stem cell hyperproliferation and precancerous polyp formation. By uncovering the mechanisms driving the initiation of intestinal polyps, she hopes to identify novel therapeutic targets to prevent polyp formation and/or transformation.

Ranjit Bindra, MD, PhD, Professor of Therapeutic Radiology, has been awarded a \$750,000 grant from the **Gateway Foundation for Cancer Research**. This funding will support biomarker studies in his Phase I/II clinical trial testing PARP inhibitors in IDH1/2-mutant glioma, which is directly translating recent discoveries from the Bindra and Glazer laboratories. The funding is a Team Science initiative over three years, with the overall goal of reverse translation to identify the molecular determinants of response to the therapy in patients treated in the trial.

Melinda Irwin, PhD, MPH, Associate Cancer Center Director for Population Sciences, will participate in the **Breast Cancer Research Foundation's Boston Hot Pink Luncheon** and Symposium today as a panelist on Novel Breast Cancer Therapies: What's New and on the Horizon moderated by .

Pamela Kunz, MD, Associate Professor of Medicine (Medical Oncology) and Director of the Center for Gastrointestinal Cancers at Smilow Cancer Hospital and Yale Cancer Center, gave the keynote address at the **ECOG-ACRIN Women’s Task Force** Fall Meeting on “Finding My Voice and Becoming an Advocate for Gender Equity in Medicine” on October 20.

Yale Cancer Center scientists and clinicians presented research at the 63rd annual **American Society for Radiation Oncology (ASTRO)** meeting held October 24-27 in Chicago. The conference brought together clinicians and researchers from all oncology disciplines to exchange ideas and promote multidisciplinary care for cancer. A full summary of participation from Yale Cancer Center and Smilow Cancer Hospital is available online.

The **Cancer Prevention and Control Research Program** welcomes **Ira Leeds,**

MD, MBA, ScM, Assistant Professor of Surgery (Colon and Rectal). Dr. Leeds is a colorectal cancer surgeon focused on examining risk and mitigation strategies of Psychosocial Risk Factors Leading up to



J.C. Carley is a Senior Administrative Assistant to Kim Slusser, VP Patient Services, Maureen Major Campos, Director, Ambulatory Nursing, Tracy Carafeno, Director, Inpatient Nursing, and Michele Kelvey-Albert, Director of Quality and Patient Safety in Smilow Administration. J.C. joined the Smilow team in January of 2020 after running a wedding photography business for 20 years.

“I have the privilege of supporting four passionate, dedicated oncology nursing leaders. Through organization, forward-thinking and a can-do attitude, I strive to be an island of calm in their busy and sometimes stressful days, so they can keep their headspace clear to make the big decisions that count,” said J.C.

Meet This Week's Extraordinary Employee

J.C. Carley



YaleNewHavenHealth
Smilow Cancer Hospital

Yale
CANCER
CENTER
A Comprehensive Cancer Center Designated
by the National Cancer Institute

Read More

Join us on Yale Cancer Answers to hear Smilow Cancer Hospital cancer genetic counselors Tanaya Shroff and Alex McClellan speak in honor of the upcoming Genetic Counselor Awareness Day on November 4. Listen on Connecticut PublicRadio or download our podcast from iTunes.



Complex Cancer Surgery. Dr. Leeds has experience with mixed approaches including analysis of secondary data sets, behavioral experiments, shared decision-making models, and complex data visualization.



Class of '61 Research Award

To recognize significant accomplishment and outstanding promise in cancer research, Yale Cancer Center is pleased to announce the **2021 competition for the Class of '61 Cancer Research Award**. This annual Award recognizes significant accomplishments in cancer research at Yale University by a young member of the faculty, coupled with the expectation for future outstanding contributions to our understanding of the causes of cancer and to the development of novel cancer treatments. Established through the generosity of the Yale College Class of 1961, the Award provides unrestricted funds to support the winner's cancer research at Yale. Nominees must be an independent Yale faculty member aged 45 or less (on Dec. 31, 2021), with accomplishments documented by published papers and awarded grants in any area of cancer research, including seminal investigations into basic cancer biology, important translational or clinical studies, or critical population science studies. The winner will be selected by a committee of senior leaders of Yale Cancer Center; self-nominations are welcome.

[Learn More](#)

Diversity, Equity, and Inclusion

One of Yale School of Medicine's diversity goals is to emphasize the importance of sponsorship in advancing the careers of women and those under-represented or marginalized in medicine and science. Yale Cancer Center and Smilow Cancer Hospital take pride in the roles our senior investigators play in sponsoring the careers of the next generation of leaders in cancer research.

Sponsorship, as distinct from mentorship, occurs when a senior person—a leader, faculty member, or manager—actively advocates for a talented junior colleague, including them in career-advancing projects, proposing them for speaking or advising roles that provide national visibility, and recommending them for leadership roles. Put simply, a mentor is someone who has knowledge and will share it and a sponsor is a person who has power and will use it. Lack of active sponsorship of women and those from under-represented groups is increasingly recognized as a crucial barrier to their advancement into leadership. Being mindful about your ability to advance the careers of your talented colleagues who are less connected to power is one way to address persistent inequities in our field.

Yale Cancer Center Award for Leadership in Diversity, Equity and Inclusion

Yale Cancer Center announces a call for nominations for an award recognizing leadership in DEI. The award will be given to the cancer center member who best exemplifies leadership in advancing diversity, equity and inclusion through support of diverse faculty and trainees, active programs to



[Read More](#)

Congratulations to Elizabeth Berger, MD, Assistant Professor of Surgery (Surgical Oncology) who has been named a prestigious Michael Zinner Health Services Research Fellow by the Surgical Outcomes Club.



[Read More](#)

Today, October 20 is Breast Reconstruction Awareness Day, a day which promotes breast reconstruction awareness, access and education, offering women a unique opportunity to learn about options for breast reconstruction following a mastectomy. Sponsored by the American Society of Plastic Surgeons and The Plastic Surgery Foundation, BRA Day was created eight years ago to inform and help women make the decision that is best for them following a diagnosis with breast cancer.

At Smilow Cancer Hospital, women with a diagnosis of breast cancer are cared for by a multidisciplinary team of physician specialists, including radiologists, breast surgeons, medical oncologists, radiation oncologists, pathologists, and plastic surgeons. If reconstruction is of interest to the patient, our plastic surgeons will discuss the appropriate reconstruction options, which can vary from placement of a simple implant to elaborate reconstructions using natural

inclusion through support of diverse faculty and trainees, active programs to foster culture change, and serving as a role model of fairness and inclusivity. Nominee must be a current member of Yale Cancer Center. Please nominate outstanding candidates and send a brief nomination letter (one-page maximum) via email to **Anna Raso** by November 1.

HHMI Diversity Initiative

The Howard Hughes Medical Institute (HHMI) is launching a \$2.2 billion initiative aimed at eliminating racial disparities among biomedical faculty at U.S. universities and medical centers. The initiative, which is budgeted through 2040, aims to address the persistent underemployment of minorities in academic medicine by addressing the causes of those disparities in several areas, including training, mentoring, hiring, and promotion.

Learn More

Book Discussion: Right Within: How to Heal from Racial Trauma in the Workplace

Join the Yale African American Affinity Group, Asian Network at Yale, Working Women's Network, Yale Latino Networking Group, and New York University Women of Color Leadership Network on Wednesday, November 3 at noon for a conversation with Minda Harts about her new book *Right Within: How to Heal from Racial Trauma in the Workplace*. All are welcome to attend this event, including allies and managers!

Learn More

Employee Profile: Donna Watkins

Donna Watkins, RN, is a practice nurse on the hematology floor at Smilow Cancer Hospital, NP7. For nearly the last two years she has balanced her workdays with patient and administrative support. She coordinates patient prescriptions, schedules doctors, processes Family Medical Leave Act (FMLA) requests, and performs general patient support. Most of all, she especially enjoys working on an oncology floor.

Donna began her career at Yale New Haven Hospital as

an Emergency Department Technician Assistant (EDTA) and she decided to go back to nursing school at age 50 and become an RN. After graduation, Donna started on NP11 before entering the



to elaborate reconstructions using natural tissue from the abdomen, thigh, or back, for DIEP flap reconstruction. Careful attention is given to achieve the best possible cosmetic result and quality of life, without compromising the chance of cure. In each case, the approach is customized to best fit each patient's lifestyle and goals.

OCTOBER
Breast Cancer Awareness Month



OCTOBER 20
Breast Reconstruction Day

YaleNewHaven**Health**
Smilow Cancer Hospital

Yale **CANCER** CENTER
A Comprehensive Cancer Center Designated by the National Cancer Institute

Read More

Brenda Mierzejewski, founder of Mizzi Cosmetics of Portland, CT, came to Smilow recently with her mother, Concetta Mizzi-Susi, to meet with Camille Servodidio and present over 100 breast cancer self-care kits. These kits of beauty and comfort are filled with the company's products and will be distributed to our patients with breast cancer. On behalf of our patients we thank Brenda, Concetta, and everyone at Mizzi Cosmetics for this very thoughtful and most welcome gift!



NP 77 before entering the Resource Pool to learn more about internal medicine. Inspired by a family member's battle with cancer, she decided to return to oncology and accepted a position on NP7. Donna retained her chemotherapy certificate and continues to check on patients who are visiting for their infusion therapy and assists with access ports.



Shalin Kothari, MD, Assistant Professor of Medicine (Hematology) says, "Donna is one of those gems that we hear about but hardly ever get to work with in person – she is among people who are not after recognition or fame, people who truly believe in service to others. I'm very fortunate to be working with her. Our patients are very thankful for her top-notch care and unassuming demeanor."

Donna loves the doctors, she loves the patients, and everything about her job on the good and bad days, but mostly, she simply cares about people. "A lot of people run from cancer and feel it's taboo, but I think cancer is misunderstood. Patients are scared, but they are still human. With so much of their battle being psychological, they just need a conversation or a hug. You have to be kind because anyone can have cancer and you never know who is going through a personal battle."

Recent Publications

Craiglow BG, Borges KA, King BA.

The Close Resemblance of Patients with Severe Alopecia Areata and Those with Cancer: What Hair Tells Us about Wellness - or Grave Illness.

Journal of the American Academy of Dermatology, Online ahead of print.

[Read More](#)

Qian DC, Ulrich BC, Peng G, et al. **Outcomes Stratification of Head and Neck Cancer Using Pre- and Post-Treatment DNA Methylation in Peripheral Blood.**

Int J Radiat Oncol Biol Phys. 2021;111(3S):S143-S144.

[Read More](#)

Ferris RL, Flamand Y, Weinstein GS, Li S, Quon H, Mehra R, Garcia JJ,

Chung CH, Gillison ML, Duvvuri U, O'Malley BW Jr, Ozer E, Thomas GR, Koch WM, Gross ND, Bell RB, Saba NF, Lango M, Méndez E, Burtness B. **Phase II Randomized Trial of Transoral Surgery and Low-Dose Intensity Modulated Radiation Therapy in Resectable p16+ Locally Advanced Oropharynx Cancer: An ECOG-ACRIN Cancer Research Group Trial (E3311).**

Journal of Clinical Oncology, Online ahead of print.

[Read More](#)



[Read More](#)

Follow Yale Cancer Center on Twitter

Follow us on [twitter](#)



New research led by @RogersLabYale

in @NatureBiotech

shows a new strategy to treat tumor growth in breast & #ovariancancer characterized by HER2 gene amplification, or an increase in the # of copies of a gene.



Register to join us for a @SmilowCancer #CME program

tonight focused on "Implementing Screening and Prevention Strategies for Individuals Identified to be at Increased Risk for Cancer"



New survey results at#ASTRO21 at 1pm led by @VikramJairam

w/@KrishanJethwa show efforts are needed to broaden edu. & reduce barriers to improve neurocognitive-sparing techniques using whole brain radiation therapy.



Happening now until 5pm at #ASTRO21, Dr. Christin Knowlton

moderates an oral scientific session on the Biology and Outcomes of #BreastCancer.



Today at #ASTRO21 at 3:30pm, @SGao_MD

presents data with @RoyHDecker

showing concurrent systemic therapy & stereotactic body radiation therapy (SBRT) may be associated with better survival versus upfront SBRT.



Today at 3:30pm at#ASTRO21, @talcottmd presents new research

w/@HeanParkMD showing prior heart

[Read More](#)

Lokeshwar SD, Press BH, Nie J, Klaassen Z, Kenney PA, Leapman MS.

Cachexia and Bladder Cancer: Clinical Impact and Management.

Current Opinion in Supportive and Palliative Care, Online ahead of print.

[Read More](#)

Hernandez BY, Zhu X, Risch HA, Lu L, Ma X, Irwin ML, Lim JK, Taddei TH, Pawlish KS, Stroup AM, Brown R, Wang Z, Wong LL, Yu H.

Oral Cyanobacteria and Hepatocellular Carcinoma.

Cancer Epidemiology, Biomarkers and Prevention, Online ahead of print.

[Read More](#)

Yu J, Tsay C, Sasaki C, Son YH, Decker RH, Mehra S, Burtness B.

Brachytherapy and non-Cancer Mortality in Patients with Oral Cavity and Oropharynx SCCs.

Oral Oncology, Online ahead of print.

[Read More](#)

Shallis RM, Pucar D, Perincheri S, Gore SD, Seropian SE, Podoltsev NA, Zeidan AM.

Molecular Testing of Isolated Myeloid Sarcoma Allows Successful FLT3-Targeted Therapy.

Annals of Hematology, Online ahead of print.

[Read More](#)

Gavrielatou N, Liu Y, Vathiotis I, Zugazagoitia J, Aung TN, Shafi S, Fernandez A, Schalper K, Psyrris A, Rimm DL.

Association of PD-1/PD-L1 Co-location with Immunotherapy Outcomes in Non-Small Cell Lung Cancer.

Clinical Cancer Research, Online ahead of print.

[Read More](#)

Zhang SM, Cai WL, Liu X, Thakral D, Luo J, Chan LH, McGeary MK, Song E, Blenman KRM, Micevic G, Jessel S, Zhang Y, Yin M, Booth CJ, Jilaveanu LB, Damsky W, Sznol M, Kluger HM, Iwasaki A, Bosenberg MW, Yan Q.

KDM5B Promotes Immune Evasion by Recruiting SETDB1 to Silence Retroelements.

Nature, Online ahead of print.

[Read More](#)

Qin L, Zhang H, Li B, Jiang Q, Lopez F, Min W, Zhou JH.

CCM3 Loss-Induced Lymphatic Defect Is Mediated by the Augmented VEGFR3-ERK1/2 Signaling.

Arteriosclerosis, Thrombosis and Vascular Biology, Online ahead of print.

[Read More](#)

Smith SM, Ahmed M, Carling T, Udelsman R, Adeniran AJ, Gilani S, Prasad ML, Barbieri AL.

Impact of Transoral Endoscopic Vestibular Approach Thyroidectomy on Pathologic Assessment.

Archives of Pathology & Laboratory Medicine, Online ahead of print.

[Read More](#)

Winkler L, Dimitrova N

w/@HenryParkMD showing prior heart #radiation dose appeared to serve as a better predictor of #COVID19 related mortality than prior lung radiation dose.



In an @ASTRO_org @ASCO joint session today at 1:45pm at #ASTRO21, @SanjayAnejaMD chairs & presents with Dr. Daniel Xang "Real-World Data & Real-World Evidence in #RadOnc".



Join us at Noon today for @YaleCancer Grand Rounds. Dr. Michaela Dinan @YaleSPH presents "Bridging emerging med. technologies & real-world cancer care" & @GloriaHuangMD "GyneCol. Cancer: Translational Science & Pivotal Trials."



Congrats to Jun Deng, PhD! Dr. Deng will be inducted as a 2021 Fellow of the American Society for Radiation Oncology #FASTRO at a ceremony in recog. of his contributions to the #RadOnc field at #ASTRO21 at 10:45am.



Dr. Ariel Jaffe @YaleLiverCancer shares that this is an extremely exciting time for the field of #livercancer - "We have only just begun to scrape the surface to better understanding this disease."



At #ASTRO21 at 8:30am, Nadia Saeed presents research w/@HenryParkMD that shows receiving concurrent chemoradiotherapy in multi. facilities vs. a single facility doesn't affect survival in adv. #NSCLC or #SCLC.



At 5:30pm today at #ASTRO21, SanjayAnejaMD will be a discussant during a special session on "Digital Health/Informatics 3- The U-Net & You: Is Segmentation a Solved Problem?"



At #ASTRO21 today at 2:20pm, Dr. Jun Deng will present on the development of an AI-empowered clinical decision support tool for better treatment outcomes with minimal toxicities.



Watch @SueEvansMDMPH Chair and Moderate a panel session at #ASTRO21 today at 2pm on "Mitigating Bias in Recruitment: Attraction

Winkler L, Dimitrova N.

A Mechanistic View of Long Noncoding RNAs in Cancer.

Wiley Interdisciplinary Review of RNA, Online ahead of print.

[Read More](#)

Streiff MB, Holmstrom B, Angelini D, Ashrani A, Elshoury A, Fanikos J, Fertrin KY, Fogerty AE, Gao S, Goldhaber SZ, Gundabolu K, Ibrahim I, Kraut E, Leavitt AD, Lee A, Lee JT, Lim M, Mann J, Martin K, McMahon B, Moriarty J, Morton C, Ortel TL, Paschal R, Schaefer J, Shattil S, Siddiqi T, Sudheendra D, Williams E, Hollinger L, Nguyen MQ.

Cancer-Associated Venous Thromboembolic Disease, Version 2.2021, NCCN Clinical Practice Guidelines in Oncology.

Journal of the National Comprehensive Cancer Network, 19(10):1181-1201.

[Read More](#)

Halloran A, Newhauser WD, Chu C, Donahue W.

Personalized 3D-printed Anthropomorphic Phantoms for Dosimetry in Charged Particle Fields.

Physics in Medicine & Biology, Online ahead of print.

[Read More](#)

Knoerl R, Giobbie-Hurder A, Sannes TS, Chagpar AB, Dillon D, Dominici LS, Frank ES, Golshan M, McTiernan A, Rhei E, Tolaney SM, Winer EP, Yung RL, Irwin ML, Ligibel JA.

Exploring the Impact of Exercise and Mind-Body Prehabilitation Interventions on Physical and Psychological Outcomes in Women Undergoing Breast Cancer Surgery.

Supportive Care in Cancer, Online ahead of print.

[Read More](#)

Powles T, Petrylak DP, Rosenberg JE.

Beyond Chemotherapy and Checkpoint Inhibitors: Weighing the Risks and Benefits of the Novel Therapies for Metastatic Urothelial Carcinoma.

Journal of Clinical Oncology, 39(30):3411-3412.

[Read More](#)

Petti LM, Koleske BN, DiMaio D.

Activation of the PDGF β Receptor by a Persistent Artificial Signal Peptide.

Journal of Molecular Biology, 433(21):167223.

[Read More](#)

Venet D, Rediti M, Maetens M, Fumagalli D, Brown DN, Majjaj S, Salgado R, Pusztai L, Harbeck N, El-Abed S, Wang Y, Saura C, Gomez H, Semiglazov VF, de Azambuja E, Huober J, Nuciforo P, Di Cosimo S, Piccart M, Loi S,

Rothé F, Sotiriou C.

Copy Number Aberration Analysis to Predict Response to Neoadjuvant Anti-HER2 Therapy: Results from the NeoALTTO Phase III Clinical Trial.

Clinical Cancer Research, 27(20):5607-5618.

[Read More](#)

Von Hoff DD, Clark GM, Coltman CA, Disis ML, Eckhardt SG, Ellis LM, Foti M, Garrett-Mayer E, Gönen M, Hidalgo M, Hilsenbeck SG, Littlefield JH, LoRusso PM, Lyerly HK, Meropol NJ, Patel JD, Piantadosi S, Post DA, Regan MM, Shyr Y, Tompkins MA, Tenner JF, Von Roenn J, Weiser LM,

"Mitigating Bias in Recruitment: Attracting a Diverse, Dynamic Workforce to Sustain the Future of Radiation Oncology."

Calendar

Yale Stem Cell Center Thirteenth Annual Retreat

October 29; 8:30 AM

Cohen Auditorium, NIHB E 02

Ali Brivanlou, PhD | Catroina Jamieson, MD, PhD | Wendy V. Gilbert, PhD | Anjelica Gonzalez, PhD | Valerie Horsley, PhD | Diane Krause, MD, PhD | Bluma Lesch, MD, PhD | Mandar Deepak Muzumdar, MD | Stefania Nicoli, PhD | Kaelyn Sumigray, PhD | Flora Vaccarino, MD

[Learn More](#)

Yale Breast Program Retreat

October 29; 9:00 AM

Nita Ahuja, MD, MBA, FACS | Roy S. Herbst, MD, PhD | Maryam Lustberg, MD, MPH | Mehra Golshan, MD, MBA | Tara Sanft, MD | Neal Fischbach, MD

Yale Cancer Answers

October 31; 7:30 PM

NPR

Breast Cancer Awareness: Patient Perspective

Claudine Mauri

[Learn More](#)

City of Hope 2nd Annual Virtual Symposium

November 1; 11:30 AM

Diabetes and Cancer Interface...Connecting the Dots

Rachel Perry, PhD, BS

[Learn More](#)

Pathology Research in Progress Talk

November 2; 9:30 AM

Anna Arnal Estape, PhD, BS & Lok Hei Chan

[Learn More](#)

Yale Cancer Center Grand Rounds/Calabresi Memorial Lecture

November 2; 12:00 PM

"Working Together to End Cancer as We Know It" – 50 Years of the National Cancer Act

Norman E. "Ned" Sharpless, MD

Regan MM, Shyr Y, Tempero MA, Tepper JE, von Roenn J, Weiner LM, Young DC, Vu NV.

A Grant-Based Experiment to Train Clinical Investigators: The AACR/ASCO Methods in Clinical Cancer Research Workshop.

Clinical Cancer Research, 27(20):5472-5481.

[Read More](#)

Mun S, Wang R, Ma X, Ananth P.

Sociodemographic and hospital-Based Predictors Of Intense End-Of-Life Care Among Children, Adolescents, And Young Adults With Hematologic Malignancies.

Cancer, 127(20):3817-3824.

[Read More](#)

Bai Y, Cole K, Martinez-Morilla S, Ahmed FS, Zugazagoitia J, Staaf J, Bosch A, Ehinger A, Nimeus E, Hartman J, Acs B, Rimm DL.

An Open-Source, Automated Tumor-Infiltrating Lymphocyte Algorithm for Prognosis in Triple-Negative Breast Cancer.

Clinical Cancer Research, 27(20):5557-5565.

[Read More](#)

Funding and Award Opportunities

AACR-Conquer Cancer®, the ASCO Foundation Young Investigator Award for Translational Cancer Research

This award provides funding to promising investigators to encourage and promote quality research in clinical oncology. The purpose of this jointly-supported award is to fund a physician-scientist during the transition from a fellowship program to a faculty appointment. Research projects are restricted to translational cancer research.

Application Deadline: November 9, 2021

[Read More](#)

AACR-Bristol Myers Squibb Midcareer Female Investigator Grant

This grant represents a joint effort to encourage and support mid-career female physician-scientists and researchers to conduct immuno-oncology research and to foster their career advancement toward becoming a senior investigator. Research projects may be translational and/or clinical in nature with a focus on immuno-oncology.

Application Deadline: November 11, 2021

[Read More](#)

Research Centers for Cancer Systems Biology (U54)

The NCI supports the application of systems biology approaches to cancer research through the CSBC. The CSBC includes U01 Research Projects and, through this FOA, U54 Research Centers. These multi-project Research Centers should address challenges in basic cancer biology that require a coordinated systems biology approach.

Application Deadline: November 12, 2021

[Read More](#)

Mechanisms that Impact Cancer Risk after Bariatric Surgery (R01, R21)

Through this FOA, the NCI invites applications for support of investigator-initiated studies elucidating mechanisms by which bariatric surgery impacts

Norman E. Ned Sharpless, MD
[Learn More](#)

Yale Center for Immuno-Oncology Seminar (presented as part of the Human and Translational Immunology Program Seminar Series)

November 2; 4:00 PM

Getting to Know the Origin of Tumor Associated Macrophages in NSCLC

Maria Casanova-Acebes, PhD

[Learn More](#)

OncLive Institutional Perspectives in Cancer

November 2; 6:30 PM

Women's Cancers

Elena Ratner, MD

[Learn More](#)

The FDA Oncology Center of Excellence Presents

November 3; 12:00 PM

Clinical Trial Endpoint Development for Locally Advanced Head and Neck Squamous Cell Carcinoma (HNSCC)

[Learn More](#)

Center for Methods in Implementation and Prevention Science (CMIPS) Qualitative Methods Innovation Program Seminar Series

November 3; 12:00 PM

Using Rapid Qualitative Research

Techniques to Identify Factors Impacting the Pace of Implementation

Traci Abraham, PhD

[Learn More](#)

YSPH Dean's Lecture & Program on Aging Seminar

November 3; 12:00 PM

From Clinical Practice To Disseminated Research--Lessons Learned While Testing And Growing CAPABLE Program

Sarah L. Szanton, PhD, ANP, FAAN

[Learn More](#)

Pathology Grand Rounds

November 4; 12:30 PM

Lessons From The Human Pancreas: Re-Writing The Textbooks On How Type 1 Diabetes Develops

Mark A. Atkinson, PhD

[Learn More](#)

initiated studies addressing mechanisms by which bariatric surgery impacts cancer risk, and seeks to draw in talented scientists who study bariatric surgery to investigate its effects on cancer, rather than shorter term outcomes such as weight loss and diabetes.

Application Deadline: November 12, 2021

[Read More](#)

Matthew Larson Foundation for Pediatric Brain Tumors

The Matthew Larson Foundation for Pediatric Brain Tumors (aka IronMatt) seeks to fund basic and translational science projects and family education in Pediatric Brain Tumor Research.

Application Deadline: November 14, 2021

[Read More](#)

Pancreatic Cancer Detection Consortium: Research Units (U01)

Through this FOA, the NCI is soliciting applications for the Research Units (RUs), one of the two scientific components of the Pancreatic Cancer Detection Consortium (PCDC), to conduct research on early detection of pancreatic ductal adenocarcinoma (PDAC) and characterization of its precursor lesions to identify those patients who are at high risk of progression to cancer.

Application Deadline: November 15, 2021

[Read More](#)

Pancreatic Cancer Detection Consortium: Management and Data Coordination Unit (U24)

Through this FOA, the NCI is soliciting applications for the establishment of the Management and Data Coordination Unit (MDCU), one of the two scientific components of the Pancreatic Cancer Detection Consortium (PCDC).

Application Deadline: November 15, 2021

[Read More](#)

Mobile Health: Technology and Outcomes in Low- and Middle-Income Countries (R21/R33)

The overall goal of the program is to catalyze innovation through multidisciplinary research that addresses global health problems, develop an evidence base for the use of mHealth technology to improve clinical and public health outcomes, and strengthen mHealth research capacity in LMICs.

Application Deadline: November 15, 2021

[Read More](#)

Cancer Research Institute Technology Impact Award

These grants aim to encourage collaboration between technology developers and clinical cancer immunologists and to generate the proof-of-principle of a novel platform technology in bioinformatics, ex vivo or in silico modeling systems, immunological or tumor profiling instrumentation, methods, reagents and assays, or other relevant technologies that can enable clinician scientists to generate deeper insights into the mechanisms of action of effective or ineffective cancer immunotherapies.

Letter of Intent Due: November 15, 2021

[Read More](#)

Alex's Lemonade Stand Foundation (ALSF) Innovation Grants

ALSF seeks game-changing proposals to substantially advance childhood

Cancer Genetics and Prevention Seminar

November 4; 2:30 PM

[Learn More](#)

Center for GI Cancers Weekly Seminar

November 4; 4:15 PM

Mouse Models for Gastric Premalignant Lesions

Won Jae Huh, MD, PhD

[Learn More](#)

Smilow Cancer Hospital and Yale Cancer Center Clinical and Research Town Hall

November 4; 5:00 PM

Dean Nancy J. Brown, MD | Keith Churchwell, MD, FACC, FAHA FACP | Nita Ahuja, MD, MBA | Roy Herbst, MD, PhD

[Learn More](#)

First Yale Annual Single Cell Symposium

November 5; 8:45 AM

Naftali Kaminski, MD & Dana Pe'er, PhD

[Learn More](#)

Yale Cancer Answers

November 7; 7:30 PM

NPR

Breast Cancer Awareness: Patient Perspective Part II

Claudine Mauri

[Learn More](#)

Yale RNA Club

November 8; 8:45 AM

[Learn More](#)

Yale Cancer Center Grand Rounds/SPORE in Skin Cancer

November 9; 12:00 PM

Age against the Machine: How Aging Drives Tumor Progression

Ashani Tanuja Weeraratna, PhD

[Learn More](#)

Smilow Shares

November 9; 7:00 PM

Understanding NETs: New Treatment Advances and Innovations

Pamela Kunz, MD | John Kunstman, MD, MHS | David C. Madoff, MD | Darko Pucar, MD, PhD | Mariam Aboian, MD, PhD

[Learn More](#)

Yale Pulmonary, Critical Care & Sleep

cancer treatments and cures. Innovation Grants provide seed funding to experienced investigators with hypothesis-driven research to develop novel and promising ideas.

Letter of Intent Due: November 15, 2021

[Read More](#)

Limited Competition: Coordinating Center for the Small Cell Lung Cancer Consortium (U24)

The purpose of this limited competition FOA is to continue support for the Coordinating Center (CC) for the Small Cell Lung Cancer (SCLC) Consortium that will be focused on prevention, diagnosis, treatment, and mechanisms of treatment resistance in SCLC.

Application Deadline: November 17, 2021

[Read More](#)

Understanding Oral HPV Infection, Acquisition, and Persistence in People Living with HIV (R01, R21)

The purpose of these FOAs are to solicit research to better understand the epidemiology and biology of oral HPV infection, its acquisition and persistence, in people living with HIV and elucidate the initial mechanisms related to HPV-associated oral and oropharyngeal cancers and warts in the context of HIV.

Application Deadline: November 18, 2021

[Read More](#)

A Multilevel Approach to Connecting Underrepresented Populations to Clinical Trials (U01)

Through this FOA, the NCI solicits applications for CUSP2CT, a program that will implement and evaluate multilevel and culturally tailored outreach and education interventions with the primary goal of increasing referral and ultimately, accrual of underrepresented racial/ethnic (R/E) minority populations, to NCI-supported clinical trials, NCI's Community Oncology Research Program, and Experimental Therapeutics Clinical Trials Network.

Application Deadline: November 19, 2021

[Read More](#)

Data, Evaluation and Coordinating Center for: A Multilevel Approach to Connecting Underrepresented Populations to Clinical Trials (U24)

The purpose of this FOA is to solicit applications for Connecting Underrepresented Populations to Clinical Trials U24 Data, Evaluation and Coordinating Center.

Application Deadline: November 19, 2021

[Read More](#)

Lion Heart Fund for Cancer Research

Supports breast cancer research - providing pilot funding to kick-start high potential research projects, and/or supporting innovative work requiring bridge funding. Contact Janine.hoffman@yale.edu for funding announcement and guidelines.

Internal Deadline: November 22, 2021

ASCI's 2022 Young Physician-Scientist Awards

With these awards, the ASCI seeks to recognize early-career physician-scientists who have made notable achievements in their research, and to encourage and inspire them through their participation in the Joint Meeting

Medicine Grand Rounds

November 10; 3:00 PM

Post COVID Outpatient Experience at Yale

Jennifer Possick, MD & Denyse

Lutchmansingh

[Learn More](#)

Immune Development Interest Group

Seminar Series

November 10; 4:00 PM

Brian Rudd, MPH, PhD

[Learn More](#)

Pharmacology Seminar Series

November 11; 2:00 PM

PET Imaging in Disease Diagnosis and Drug Development

Jason Cai, PhD

[Learn More](#)

Cancer Genetics and Prevention Seminar

November 4; 2:30 PM

[Learn More](#)

Center for GI Cancers Weekly Seminar – Journal Club

November 11; 4:15 PM

Article TBD

Vinay Rao, MD

[Learn More](#)

Submissions

Please submit your recent publications, awards, and grant announcements to:

[Renee Gaudette](#)

Director, Public Affairs and Communications

and related programming.

Application Deadline: November 22, 2021

Read More

Launching soon: ASCI Emerging-Generation Awards

These awards recognize post-MD, pre-career physician-scientists who are meaningfully engaged in immersive research, giving them access to the Joint Meeting and longitudinal programming similar to the YPSA program. Entry into the ASCI network at this stage is intended to provide peer support and inspiration to stay the course into a physician-scientist faculty appointment.

Look for E-Gen Awards nominations to open in late October.

Contact programs@the-asci.org for more information.

AACR Clinical Oncology Research (CORE) Training Fellowships

Designed for early-career clinical scientists who hold a medical degree (MD, DO, or MD/PhD) and are interested in acquiring the knowledge and skills related to clinical trial design and execution from the perspective of the pharmaceutical industry. The fellow will gain real-world experience in drug development, including clinical research, clinical trial design, and data analysis.

Application Deadline: November 30, 2021

Read More

AACR Career Development Award to Further Diversity, Equity, and Inclusion in Clinical Cancer Research

This award has been established to support the development and diversity of highly talented cancer researchers from underrepresented groups (as per NIH guidelines) in the field of clinical cancer research.

Application Deadline: November 30, 2021

Read More

Breast Cancer Research Foundation-AACR Career Development Awards to Promote Diversity and Inclusion

These awards represent a focused effort to encourage and support investigators from diverse backgrounds traditionally excluded in cancer research and to foster their career advancement. This grants program also intends to build a more diverse and inclusive future for breast cancer research.

Application Deadline: November 30, 2021

Read More

DeLuca Center for Innovation in Hematology Research

Five pilot awards will be awarded to support investigators pursuing research in Hematology and to generate preliminary data for new NCI/NIH grant applications. The research should seek to advance our knowledge in Hematologic disorders and to improve patient care, therapies, and outcomes.

Letter of Intent Due: December 1, 2021 to richard.carr@yale.edu

Read More

The NCCN Foundation 2022 Young Investigator Award (YIA) Program

Through its YIA Program, the NCCN Foundation invites proposals from young investigators with innovative ideas and an interest in improving the quality, effectiveness, efficiency and accessibility of care provided to patients with cancer.

Deadline for Nomination: December 1, 2021

[Read More](#)

Howard Hughes Medical Institute: Hanna H. Gray Fellows Program 2022

HHMI seeks to increase diversity in the biomedical research community. The goal of the Hanna H. Gray Fellows Program is to recruit and retain individuals from gender, racial, ethnic, and other groups underrepresented in the life sciences, including those individuals from disadvantaged backgrounds.

Application Deadline: December 1, 2021

[Read More](#)

The Hope Foundation for Cancer Research SEED Fund for SWOG Early Exploration and Development 2021

These awards may assist investigators with projects that support the following types of studies: pre-clinical data, secondary data analysis from clinical trials, pilot and feasibility studies (including early stage clinical trials), small, self-contained research projects, or development of research methodology/technology. \$50,000

Application Deadline: December 1, 2021

[Read More](#)

DKMS Stiftung Leben Spenden (Foundation for Giving Life) - John Hansen Research Grant

This grant is intended to provide financial support to as many as four talented international young scientific researchers who want to advance the fight against blood cancer with their promising research projects in the field of blood stem cell transplantation and cell therapy.

Application Deadline: December 3, 2021

[Read More](#)

HEAL Initiative: Advancing Health Equity in Pain Management (R61/R33 Clinical Trial Required)

The purpose of this FOA is to solicit applications to accelerate development, testing and implementation of evidence-based interventions—that are culturally and linguistically appropriate for NIH-designated populations that experience health disparities in the United States—to mitigate disparities in provision of care and treatment decisions, reduce susceptibility to chronic pain and improve patient outcomes.

Application Deadline: December 9, 2021

[Read More](#)

The Conquer Cancer – Breast Cancer Research Foundation Research Professorship for Diversity and Inclusion in Breast Cancer

Provides flexible funding to outstanding researchers who have made, and are continuing to make, significant contributions in breast cancer research and will dedicate their time in training future breast cancer researchers.

Letter of Intent Due: December 14, 2021

[Read More](#)

The Conquer Cancer – Breast Cancer Research Foundation Advanced Clinical Research Award (ACRA) for Diversity and Inclusion in Breast Cancer Research

Designed with the primary goal of increasing diversity in the oncology workforce and cancer research. Awards will be given to mid-career investigators who are members of racial and/or ethnic groups traditionally excluded in academic medicine and biomedical research, and who wish to

conduct original breast cancer research not currently funded.

Letter of Intent Due: December 14, 2021

[Read More](#)

Implementation Science for Cancer Control in People Living with HIV in Low- and Middle-Income Countries (U01)

The purpose of this FOA is to support and accelerate the integration of evidence-based cancer control interventions for PLWH by leveraging existing HIV treatment and prevention infrastructure.

Application Deadline: December 15, 2021

[Read More](#)

Alex's Lemonade Stand Foundation (ALSF) and RUNX1 Early Career Investigator Grant

The purpose of this grant is to promote the establishment of a new generation of translational and clinical researchers interested in tackling inherited hematologic malignancy predisposition disorders with a focus on RUNX1-familial platelet disorder.

Application Deadline: December 20, 2021

[Read More](#)

Yale Cancer Center K12 Calabresi Immuno-Oncology Training Program Scholar Awards

We are pleased to solicit applications for the Yale Cancer Center (YCC) K12 Calabresi Immuno-Oncology Training Program (IOTP) Scholar Award for junior faculty to enhance research skills beyond the training provided during graduate and postgraduate training.

Application Deadline: January 3, 2022

[Read More](#)