

August 6, 2021

Announcements

Alyssa Gillego, MD, Appointed to Surgery

We are pleased to announce that Alyssa Gillego, MD, has been appointed an Assistant Professor of Surgery (Surgical Oncology) and will join the practice at the Smilow Cancer Hospital Care Center at Greenwich; Dr. Gillego will continue to care for patients as part of the Breast Center at Greenwich Hospital. Dr. Gillego received her medical degree from Far Eastern University in the Philippines, fulfilled her general surgery residency at Maimonides Medical Center in Brooklyn, NY, and completed a Breast Surgery Fellowship at Beth Israel Medical Center, St. Luke's - Roosevelt Hospital Center in New York City.



In 2019, Dr. Gillego was nominated for the Greenwich Hospital Physician in Care Award, as an attending surgeon. Prior to joining Greenwich Hospital, Dr. Gillego practiced at Mt. Sinai Beth Israel and was an Associate Professor of Surgery at the Icahn School of Medicine at Mount Sinai. Dr. Gillego is part of a multidisciplinary team that combines the latest therapies, clinical research, and personalized care to deliver the highest quality of care at our Greenwich Hospital campus.

Yale Cancer Center Grand Rounds

Beginning September 7, 2021, all Grand Rounds attendance will need to be submitted via text message each week for CME credit. To record attendance, you must first have an active account in Yale CloudCME®. If you do not have an active CME account, please take a few minutes to **set up your account** in advance.

You will only be able to record your attendance 15 minutes prior to Grand Rounds on Tuesdays at Noon, during Grand Rounds, or 30 minutes after. A

unique ID number will be provided each week at the beginning of Grand

from the desk of
Nita Ahuja, MD, MBA, FACS
Interim Director, Yale Cancer Center
Interim Physician-in-Chief,
Smilow Cancer Hospital

Yale
NewHaven
Health
Smilow Cancer
Hospital

Yale **CANCER**
CENTER
A Comprehensive Cancer Center Designated
by the National Cancer Institute

News Center

**Patients Find Healing Through Art
Therapy at Smilow Cancer Hospital**



[Read More](#)

Rounds, and then again at the end. You must first pair your phone with your account in Yale CloudCME®. To pair your phone, please text the email address you use for your Yale CME Profile to **203-442-9435**. You will receive a message that your phone number has been updated. This is a one-time requirement.

To record your attendance each week, text the unique ID number provided to **203-442-9435**. You will receive a message back that verifies your activity attendance has been recorded. The ID number will change each week. Please reach out to **Emily Montemerlo** with questions regarding this change.

Notables

Yale Cancer Center is pleased to announce the recipients of this year's **Pilot awards** and **T-TARE award** for innovative cancer research. Congratulations to the following Yale Cancer Center members:

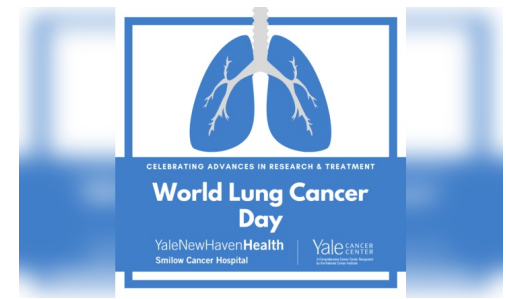
- **Nikhil Joshi, PhD**, Assistant Professor of Immunobiology (Cancer Immunology), *Investigating the Impact of Lkb1-loss on Tumor-specific CD8 T Cell Responses in Lung Adenocarcinoma*
- **Jeffrey Ishizuka, MD, DPhil**, Assistant Professor of Medicine (Medical Oncology) (Cancer Immunology), *Tumor-specific ADAR1 Targeting Strategies in Disseminated and Metastatic Cancer*
- **Claudio Alarcón, PhD**, Assistant Professor of Pharmacology (Genetics, Genomics, and Epigenetics), *Role of the RNA Modification m6A in Pancreatic Cancer*
- **Seth Herzon, PhD**, Milton Harris '29 Ph.D. Professor of Chemistry and **Ranjit Bindra, MD, PhD**, Professor of Therapeutic Radiology (Developmental Therapeutics/Radiobiology and Radiotherapy), *Development of a Novel O6G-Selective Alkylation Platform Targeting MGMT Deficient Malignancies*
- **Nicole Deziel, PhD, MHS**, Associate Professor of Epidemiology (Cancer Prevention and Control), *Using Neonatal Dried Blood Spots to Evaluate Environmental Exposures, the Neonatal Metabolome, and Pediatrics and Early-Onset Cancers*
- **Luisa Escobar-Hoyos, PhD**, Assistant Professor of Therapeutic Radiology (Radiobiology and Radiotherapy), *Restoring Anti-Tumor Immunity by Correcting RNA Splicing Defects in T Cells*
- **Rachel Perry, PhD**, Assistant Professor of Medicine (Endocrinology) and Cellular & Molecular Physiology (Cancer Signaling Networks), T-TARE Award: *Targeting Hyperinsulinemia in Breast Cancer*

Jeffrey Townsend, PhD, Elihu Professor of Biostatistics and Professor of Ecology and Evolutionary Biology and a member of Yale Cancer Center's Genomics, Genetics, and Epigenetics Research Program, has been appointed as the inaugural Co-Chair Elect of the American Association for Cancer Research's (AACR) new **Working Group on Cancer Evolution**. [Learn More](#)

Maryam Lustberg, MD, MPH, Associate Professor of Medicine (Medical Oncology), Chief of Breast Medical Oncology and Director of The Breast Center at Smilow Cancer Hospital, has been appointed **Co-Chair of the Alliance for Clinical Trials in Oncology Symptom Intervention Committee**, along with Kathryn Ruddy, MD of the Mayo Clinic.

Juan Vasquez, MD, Assistant Professor of Pediatrics

Yale Cancer Center Helps Advance New Treatments for Lung Cancer



[Read More](#)

Meet Dr. Stacey Stein



[Read More](#)

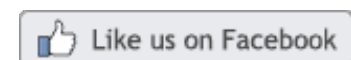
Lakshmanan Krishnamurti Named Chief of Pediatric Hematology, Oncology, and Bone Marrow Transplant at Yale New Haven Children's Hospital and Smilow Cancer Hospital



[Read More](#)



Join Smilow Cancer Hospital on Facebook



Jade Saliba, PCA, on our surgical oncology inpatient unit, is not only a #SmilowStar, but

recently put her life-saving skills to use at her local gym! Jade noticed a crowd gathering

(Hematology/Oncology) and a member of Yale Cancer Center's Cancer Immunology Research Program, has received a **NIH/NCI K08 Career Development Grant**. The award is for 5 years with approximately \$214,000 in direct costs per year to fund his project is titled "Targeting the DNA damage response with PARP and ATR inhibition to potentiate cytotoxicity and improve efficacy of immune checkpoint blockade in IDH mutant gliomas." The goal of Dr. Vasquez's project is to uncover new strategies to exploit DNA repair defects induced by IDH mutations and improve response to immunotherapy in brain tumors.

Ellen F. Foxman, MD, PhD, Assistant Professor of Laboratory Medicine and of Immunobiology and a member of Yale Cancer Center's Cancer Signaling Networks Research Program, has been named a **2021 Rita Allen Foundation Scholar**. The foundation celebrates early-career leaders in the biomedical sciences whose research holds exceptional promise for revealing new pathways to advance human health. Foxman will receive a five-year research grant to study the ability of the innate immune system to provide protection against infections.

Samantha Parillo, BSN, MSN, has been appointed **Patient Services Manager** for the department of Radiation Oncology at Smilow Cancer Hospital and will begin her new role on August 29, 2021. In this role, Ms. Parillo will oversee the nursing teams located at the Smilow Radiation Oncology departments in New Haven, Guilford, Hamden, Trumbull, and Greenwich. She has been a nurse at YNHH since 2005 and is an Assistant Professor at Charter Oak State College.

Congratulations to **Yanixa Quinones-Aviles**, a PhD student in the lab of **Mandar Muzumdar, MD**, Assistant Professor of Medicine (Medical Oncology), who was recently awarded an F31 fellowship from the NCI. Her topic of research will be "Differential pathway engagement and the biological consequences of KRAS variants in cancer."

George Goshua, MD, a third-year hematology fellow at Yale, has been selected as the recipient of **Yale Cancer Center's Forget Scholar for 2021**. The Forget Scholar award was established in 2015 in honor of Dr. Bernard Forget, renowned hematologist and scientist who made pioneering contributions to the study of red cells, hemoglobin, and the genetics of blood disorders. The annual award is given to a deserving individual who is transitioning from their fellowship to an academic career in hematology. Dr. Goshua has a subspecialty focus in rare clotting and bleeding disorders, and his research focus is in decision, cost, and clinical effectiveness analysis, with an emphasis on affordable medical care from the perspective of both the patient and the health system.

Among Dr. Goshua's other recent achievements, he was accepted into the prestigious Master of Science degree program in Health Policy and Management at the Harvard T. H. Chan School of Public Health. There he will gain analytical, technical, and quantitative skills to address critical scientific and health challenges that affect the lives of individuals and entire populations. He was concurrently accepted for the **2021 Harvard Program in Clinical Effectiveness**, which is an intensive summer program providing clinical investigators with core training in Clinical Epidemiology and Clinical Biostatistics. Congratulations to Dr. Goshua!

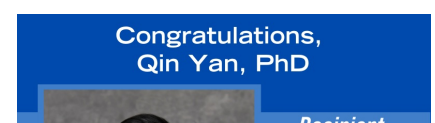
around and found a man unresponsive and blue; she quickly stepped in, assessed his pulse and began chest compressions while directing others to dial 911 and locate the AED she had seen in the gym. Her calm response and persistency in requesting the AED, and applying it while she directed a witness to continue the compressions, is incredible. Jade delivered several shocks and the man was resuscitated and later admitted to Yale New Haven Hospital.

Jade had attended a mock code the week before, and credits her training with helping her know what to do. We are proud of her tremendous skill and leadership in this situation and commend Jade for utilizing her training outside the workplace for our community. We also recognize her manager Cara Henderson and Rebecca Halpern for providing the support and resources for mock codes on their Smilow unit.



[Read More](#)

Congratulations to Qin Yan, PhD, Associate Professor of Pathology and Director of the Epigenetics Program, on his Breakthrough Award from the Department of Defense to fund his research on "Targeting a Bromodomain Protein CECR2 in Breast Cancer." The award funds \$1.67 million of research over three years.



The Center for Community Engagement and Health Equity (Director: Marcella Nunez-Smith) has selected four YCC investigators to be funded to take part in the year-long “**Foundations of Community-Engaged Research**” course offered through the **National Clinician Scholars Program**.

Congratulations to:

- **Cecelia Calhoun, MD, MPHS, MBA**, Assistant Professor of Medicine (Hematology) and of Pediatrics (Hematology/Oncology)
- **Henry S. Park, MD, MPH**, Assistant Professor of Therapeutic Radiology
- **Anna Arnal Estapé, PhD**, Associate Research Scientist, Department of Pathology
- **Raiza Rossi, MD**, Post-Doctoral Fellow, Digestive Diseases Center

Barbara Burtness, MD, Professor of Medicine (Medical Oncology), Interim Associate Cancer Center Director for Diversity, Equity, and Inclusion, Co-Leader of the Developmental Therapeutics Research Program, and DART Leader for the Head & Neck Cancer Program, recently presented at the **Shah Symposium** at the American Head and Neck Society International Meeting on Deintensification for Oropharynx Cancer: Pulling it All Together. Dr. Burtness was also a panelist at the **American Head & Neck Society Immunotherapy Symposium** and presented on “Immunotherapy and HPV-Associated Head and Neck Cancer.”

The Yale Center for Clinical Investigation (YCCI) has named its **2021 Scholars**, junior researchers who will receive added support as they build their careers. The categories of YCCI Scholars are junior faculty, predoctoral awardees, and postdoctoral trainees. Congratulations to the following Yale Cancer Center and Smilow Cancer Hospital members who have been selected as YCCI Scholars for 2021:

- **Michael Alperovich, MD, MSc, FACS**, Assistant Professor of Surgery (Plastics)
- **Cecelia Calhoun, MD, MPHS, MBA**, Assistant Professor of Medicine (Hematology) and of Pediatrics (Hematology/Oncology)
- **Aileen Fernandez, PhD**, Postdoctoral Fellow, Department of Pathology

The **Yale SPORE in Head and Neck Cancer** recently announced the recipients of the 2021 Career Enhancement Program and Developmental Research Program Award cycles of funding. These awards aim to educate the next generation of investigators committed to translational research in lung cancer and support studies with a strong translational component. Awardees are as follows:

SPORE in Head and Neck Cancer Career Enhancement Program Awards:

- **Claudio Alarcón, PhD**, Assistant Professor of Pharmacology, *Determining the role of RNA Methylation in Head and Neck Cancer* (Mentor: Mark Lemmon)
- **He (Peter) Wang, MD, PhD**, Associate Professor of Pathology, *Electronic Cigarette Exposure on Oral Mucosa Carcinogenesis* (Mentors: Barbara Burtness, Qin Yan, Nikhil Joshi)
- **Bernadette Marquez-Nostra, PhD**, Assistant Professor of Radiology and Biomedical Engineering, *PET Imaging of Activated T Cells in Preclinical Models of Head and Neck Cancer* (Mentors: Barbara Burtness, Richard Carson)
- **Kim Blenman, PhD, MS**, Assistant Professor of Medicine (Medical Oncology), *Antigen Processing and Presentation Machinery as Prognostic Markers for HNSCC* (Mentors: David Rimm, Barbara Burtness)

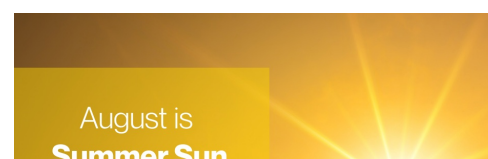


Read More

While August is Summer Sun Safety Month, it's important to be 'sun smart' all year long! If you and your family plan to take part in activities outdoors, please take these steps so everyone is safe in the sun:

- 1) Generously apply a broad-spectrum, water-resistant sunscreen with a minimum 30 SPF a half hour before going outside and reapply every two hours;
- 2) Protect your sunscreen from hot temperatures by storing in a cooler next to beverages and snacks;
- 3) Keep your lips protected and use lip balm that contains SPF ingredients;
- 4) Avoid the sun during its peak hours between 10am and 2pm;
- 5) Create your own shade by wearing protective clothing made with a high UPF rating to shield your skin from the sun, or wear long sleeves, pants, a wide-brimmed hat, and sunglasses designed to provide UV protection will help to shade you, too!

It only takes 15 minutes' exposure to ultraviolet rays from the sun to damage your skin. Please be safe this summer!



SPORE in Head and Neck Cancer Developmental Research Program

Awards:

- **David Rimm, MD, PhD**, Professor of Pathology and Medicine (Medical Oncology), *Discovery of New Biomarkers Associated with Immunotherapy Treatment in HNSCC*
- **Camille Ragin, PhD, MPH**, Professor at Fox Chase Cancer Center, *Investigating Genetic Ancestry and Therapeutic Response Among African American Oral Cavity and Laryngeal Cancer Patients*
- **Benjamin Turk, PhD**, Associate Professor of Pharmacology, *Understanding How HNSCC-associated ERK2 Mutations Sensitize to EGFR Inhibition*

Diversity, Equity, and Inclusion

Yale Cancer Center is pleased to announce our inaugural DEI Council, under the leadership of Barbara Burtness, MD, Interim Associate Cancer Center Director for Diversity, Equity, and Inclusion. The diversity of the council membership will help to reflect our entire Cancer Center community and will serve to better understand and represent the needs of Yale Cancer Center. Please reach out to Dr. Burtness or any Council member to discuss DEI values and initiatives.

- **Prasanna Ananth, MD, MPH**, Assistant Professor of Pediatrics (Hematology/Oncology)
- **Kevin Billingsley, MD, MBA, FACS**, Professor of Surgery (Oncology); Chief Medical Officer, Smilow Cancer Hospital
- **Anne Chiang, MD, PhD**, Associate Professor of Medicine (Medical Oncology); Chief Network Officer and Deputy Chief Medical Officer, Smilow Cancer Network
- **Courtney Gibson, MD, MS, FACS**, Assistant Professor of Surgery (Endocrine Surgery)
- **Margaret Gilshannon**, Senior Director, Finance & Administration
- **Rachel Greenup, MD, MPH**, Associate Professor of Surgery (Surgical Oncology); Chief of Breast Surgery
- **Iris Isufi, MD**, Associate Professor of Medicine (Hematology)
- **Lilian Kabeche, PhD**, Assistant Professor of Molecular Biophysics and Biochemistry
- **Edward Kaftan, PhD**, Assistant Cancer Center Director for Translational Sciences
- **Harriet Kluger, MD**, Professor of Medicine (Medical Oncology); Associate Cancer Center Director for Education, Training and Faculty Development; Deputy Section Chief, Medical Oncology
- **Pamela Kunz, MD**, Associate Professor of Medicine (Medical Oncology); Director, Center for Gastrointestinal Cancers at Smilow Cancer Hospital and Yale Cancer Center; Chief of Gastrointestinal Medical Oncology
- **Darin Latimore, MD**, Deputy Dean and Chief Diversity Officer; Associate Professor of Medicine (General Medicine)
- **Alfred Lee, MD, PhD**, Associate Professor of Medicine (Hematology); Director, Hematology/Oncology Fellowship Program
- **Renelle Lim, MD**, Assistant Professor of Ophthalmology and Visual Science
- **Markus Müschen, MD, PhD**, Arthur H. and Isabel Bunker Professor of Medicine (Hematology) and Professor of Immunobiology; Director, Center of Molecular and Cellular Oncology
- **Don Nguyen, PhD, BS**, Associate Professor of Pathology and Medicine (Medical Oncology); Assistant Cancer Center Director for Research Development
- **Marcella Nunez-Smith, MD, MHS**, Director of the Center for Community Engagement and Health Equity; Associate Cancer Center

Summer Sun
Safety Month!

YaleNewHavenHealth
Smilow Cancer Hospital

Yale
CANCER
CENTER
A Collaborative Cancer Center
of the Yale Medical Center

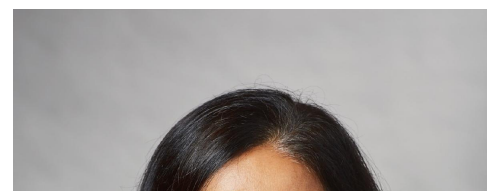
Read More

Bill Hadovski's can-do spirit continually impressed his care team at Smilow Cancer Hospital. He credits his wife Johann and the experts at Smilow for giving him the confidence to focus on the positive throughout his treatment for esophageal cancer.



Read More

Recently on Yale Cancer Answers, Dr. Farzana Pashankar discussed the care of pediatric patients with cancer, and also younger patients with sickle cell disease. Listen to the program on Connecticut Public Radio or download our podcast from iTunes.



- **Antonio Omuro, MD**, Professor of Neurology; Chief of Neuro-Oncology; Director, Chênevert Family Brain Tumor Center at Smilow Cancer Hospital and Yale Cancer Center
- **Faye Rogers, PhD**, Associate Professor of Therapeutic Radiology; Vice Chair for Diversity, Equity and Inclusion, Therapeutic Radiology
- **Carla Rothlin, PhD**, Dorys McConnell Duberg Professor of Immunobiology and Professor of Pharmacology; Co-Leader, Cancer Immunology
- **Kim Slusser, RN, MSN**, Vice President, Patient Services, Smilow Cancer Hospital
- **Nwanmegha Young, MD**, Associate Professor of Clinical Surgery (Otolaryngology)



[Read More](#)

Employee Profile: Donna LaPolt

In March of 2020, Donna LaPolt had just started in her new role as Implementation and Optimization Specialist for Smilow Clinical Operations. It is a position created for her based on her unique knowledge and skill set in both the clinical and administrative settings. Having been at Yale for almost 10 years working in both The Smilow Breast Center and with the Smilow Cancer Genetics and Prevention Program, Donna is adept at navigating the needs of both patients and providers.

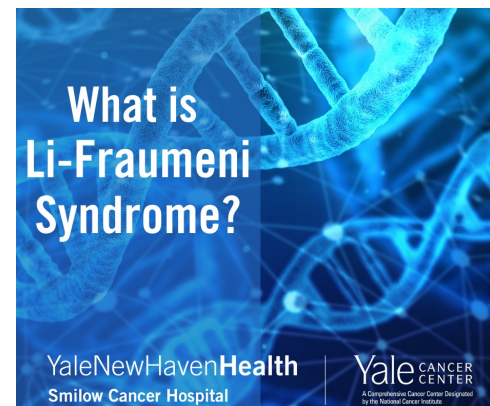


Donna assists with project implementation across the Smilow Network, with a focus on technical aspects of rolling out a new initiative. For example, she was involved with the rollout of Telehealth, a critical tool during the pandemic, and is a member of several of the Ambulatory Transformation Workgroups. Donna works to identify any potential barriers or issues before a new project is launched and assesses the possible impact it will have on a broader scale.

“I do miss interacting directly with patients in the clinic, but in my current role I am able to affect more change for a larger number of patients,” said Donna. “This role allows me to combine my clinical and administrative knowledge to provide insights to improve workflows, collect metrics, and improve patient care.”

Naralys Sinanis, MPH, CHES, OCM Program Manager, commented, “Donna is exceptional. She’s made a profound difference on many Smilow initiatives because she’s a resourceful and tenacious problem solver. She proactively works to identify creative ways to prevent workflow issues in the future. On a personal level, Donna is very friendly and caring. She remembers special occasions and plans thoughtful gestures to make her team feel included and special. She’s truly a pleasure to work with and we are incredibly grateful to have her on our team.”

Sarcomas are rare cancers that may occur anywhere in the body. A small portion of sarcomas occur due to an inherited cancer predisposition. During Sarcoma Awareness Month, the Smilow Cancer Genetics and Prevention Program shines a spotlight on Li-Fraumeni syndrome (LFS), one hereditary cause of sarcoma.



[Read More](#)

Please join us in congratulating Joyce Chung, MD, MS, Christin Knowlton, MD, MA, and Bruce McGibbon, MD, who have all been promoted to the rank of Associate Professor of Clinical Therapeutic Radiology.

Congratulations Joyce Chung, MD, MS, Christin Knowlton, MD, MA, and Bruce McGibbon, MD, for their promotions to Associate Professor of Clinical Therapeutic Radiology



Recent Publications

Woodard GA, Li A, Boffa DJ.

Role Of Adjuvant Therapy in T1-2N0 Resected Non-Small Cell Lung Cancer.

The Journal of Thoracic and Cardiovascular Surgery, S0022-5223(21)01032-1, Online ahead of print.

[Read More](#)

Tesfaye E, Martinez-Terroba E, Bendor J, Winkler L, Olivero C, Chen K, Feldser DM, Zamudio JR, Dimitrova N.

The p53 Transcriptional Response across Tumor Types Reveals Core and Senescence-specific Signatures Modulated by Long Noncoding RNAs.

Proceedings of the National Academy of Sciences, 118(31):e2025539118.

[Read More](#)

Bleicher RJ, Moran MS, Ruth K, Edge SB, Dietz JM, Wilke LG, Stearns V, Kurtzman SH, Klein J, Yao KA.

The Impact of Radiotherapy Delay in Breast Conservation Patients Not Receiving Chemotherapy and the Rationale for Dichotomizing the Radiation Oncology Time-Dependent Standard into Two Quality Measures.

Annals of Surgical Oncology, Online ahead of print.

[Read More](#)

Chagpar, AB.

Debate: Postmastectomy Radiation Therapy in T1/2N1 Disease.

Annals of Surgical Oncology, Online ahead of print.

[Read More](#)

Sanchez JC, Ehrlich BE.

Functional Interaction between TRPV4 and NCS1 and the Effects of Paclitaxel.

Molecular Pharmacology, Online ahead of print.

[Read More](#)

Sun Y, Chen W, Torphy RJ, Yao S, Zhu G, Lin R, Lugano R, Miller EN, Fujiwara Y, Bian L, Zheng L, Anand S, Gao F, Zhang W, Ferrara SE, Goodspeed AE, Dimberg A, Wang XJ, Edil BH, Barnett CC, Schulick RD, Chen L, Zhu Y.

Blockade of the CD93 Pathway Normalizes Tumor Vasculature to Facilitate Drug Delivery and Immunotherapy.

Science Translational Medicine, 13(604):eabc8922.

[Read More](#)

Venet D, Rediti M, Maetens M, Fumagalli D, Brown DN, Majjaj S, Salgado R, Pusztai L, Harbeck N, El-Abed S, Wang Y, Saura C, Gomez H, Semiglazov V, de Azambuja E, Huober J, Nuciforo P, Di Cosimo S, Piccart-Gebhart M, Loi S, Rothé F, Sotiriou C.

Copy Number Aberration Analysis to Predict Response to Neoadjuvant Anti-HER2 Therapy: Results from the Neoaltto Phase III Clinical Trial.

Clinical Cancer Research, Online ahead of print



[Read More](#)

Follow Yale Cancer Center on Twitter

Follow us on [twitter](#)



A recent pub by experts from the NAPBC, including @SmilowCancer

Dr. Meena Moran, explored #radiotherapy delay in #breastconservation patients not receiving #chemotherapy, which will possibly impact @AmCollSurgeons quality measures.



Listen to @BarbaraBurtness provide an update to @ReachMD

for #headandneckcancer treatment, specifically discussing recent clinical trial data and strategies to improve sequencing and treatment selection for patients.



Congratulations to @maryam_justberg, Chief of Breast Medical Oncology @YaleCancer & Director of the The Breast Center @SmilowCancer, on her appointment as Co-Chair of the Symptom Intervention Committee



It's #WorldLungCancerDay. Read how research @YaleCancer

and clinical advances and trials @SmilowCancer are helping to develop new treatments and bring hope to patients and their families.



Research led by @Dr_AmerZeidan in the journal Transfusion shows peri-transfusion quality of life assessment

offers a strategy to inform shared decision-making regarding red cell transfusion for #MDS patients.



Congratulations to @JeffTownsend appointed Co-Chair Elect of the new

@AACR Cancer Evolution Working Group

Clinical Cancer Research, Online ahead of print.

Read More

Briggs N, Gormally MV, Li F, Browning SL, Treggiari MM, Morrison A, Laurent-Rolle M, Deng Y, Hendrickson JE, Tormey CA, Desruisseaux MS.

Early but not Late Convalescent Plasma is Associated with Better Survival in Moderate-To-Severe COVID-19.

PLoS One, 16(7):e0254453.

Read More

Zon RT, Kennedy EB, Adelson K, Blau S, Dickson N, Gill D, Laferriere N, Lopez AM, Mulvey TM, Patt D, Pickard TA, Purdom T, Royce TJ, Sumrall AL, Page RD.

Telehealth in Oncology: ASCO Standards and Practice Recommendations.

JCO Oncology Practice, Online ahead of print.

Read More

Rangel-Angarita V, Malaker SA.

Mucinomics as the Next Frontier of Mass Spectrometry.

ACS Chemical Biology, Online ahead of print.

Read More

Sellers CM, Uhlig J, Ludwig JM, Pollak JS, Taddei TH, Stein SM, Lim JK, Kim HS.

The Effect of Chronic Viral Hepatitis on Prognostic Value of Inflammatory Biomarkers in Hepatocellular Carcinoma.

Cancer Medicine, Online ahead of print.

Read More

Gonzalez-Ericsson PI, Wulfkhule JD, Gallagher RI, Sun X, Axelrod ML, Sheng Q, Luo N, Gomez H, Sanchez V, Sanders M, Pusztai L, Petricoin EF, Blenman KR, Balko JM, Trial Team IS.

Tumor-specific Major Histocompatibility-II Expression Predicts Benefit to Anti-PD-1/L1 Therapy in Patients with HER2-Negative Primary Breast Cancer.

Clinical Cancer Research, Online ahead of print.

Read More

Rottmann BG, Patel N, Ahmed M, Deng Y, Ciarleglio M, Vyas M, Jain D, Zhang X.

Clinicopathological Significance of Neutrophil-rich Colorectal Carcinoma.

Journal of Clinical Pathology, Online ahead of print.

Read More

Von Hoff DD, Clark GM, Coltman CA, Disis ML, Eckhardt SG, Ellis LM, Foti M, Garrett-Mayer E, Gonen M, Hidalgo M, Hilsenbeck SG, Littlefield JH,

LoRusso PM, Lyerly HK, Meropol NJ, Patel JD, Piantadosi S, Post DA, Regan MM, Shyr Y, Tempero MA, Tepper JE, Von Roenn J, Weiner LM, Young DC, Vu NV.

A Grant-based Experiment to Train Clinical Investigators: The AACR/ASCO Methods in Clinical Cancer Research Workshop.

Clinical Cancer Research, Online ahead of print.

Read More

dedicated to advancing #cancer evolution research.



We're pleased to announce @LakshmananKris7

Chief of Pediatric Hematology, Oncology, & Bone Marrow Transplant @YNHH Children's Hospital & Leader of the @SmilowCancer Pediatric Hematology/Oncology Program.



A new study led by Dr. Hillary Hosier & @sanguisheth in @AJOG_thegray shows the need for evidence-based strategies to improve guideline dissemination and adherence in #cervicalcancer screening in adolescent girls.



A new review led by Dr. Michael Hurwitz in *Current Oncology Reports* discusses understanding and management approaches of #intraductalcarcinoma of the #prostate (IDC-P).



A new review led by @jennkwanMDPhD in *Current Oncology Reports* shows #SoMe had a positive impact in #CardiOncology during #COVID19 by supporting innovation and highlighting health disparities in the field.



Read how new leadership in our breast cancer program is bringing Renewed Energy in Breast Cancer Care to @SmilowCancer @YaleCancer in Centerpoint Magazine

Calendar

Digestive Diseases Physiopathology Seminar

August 6; 1:00 PM

Acute Pancreatitis

Thiruvengadam Muniraj, MD, FRCP

Learn More

Digestive Diseases Physiopathology Seminar

August 6; 2:00 PM

Biliary Obstruction

Thiruvengadam Muniraj, MD, FRCP

Learn More

Herbst R, Jassem J, Abogunrin S, James D, McCool R, Belleli R, Giaccone G, De Marinis F.

A Network Meta-Analysis of Cancer Immunotherapies Versus Chemotherapy for First-Line Treatment of Patients With Non-Small Cell Lung Cancer and High Programmed Death-Ligand 1 Expression.

Frontiers in Oncology, 11:676732.

[Read More](#)

Rothman DL, Shulman RG.

Two Transition States of the Glycogen Shunt and Two Steady States of Gene Expression Support Metabolic Flexibility and the Warburg Effect In Cancer.

Neoplasia, 23(9):879-886, Online ahead of print.

[Read More](#)

Gunn AH, Sorenson C, Greenup RA.

Navigating the High Costs of Cancer Care: Opportunities for Patient Engagement.

Future Oncology, Online ahead of print.

[Read More](#)

Smith KC, White S, DeSanto J, Hannum S, Mayonado N, Ahuja N, Bowie J, Cowall D, Mischtschuk J, Peairs K, Thorner E, Tran P, Wolff A, Snyder C.

Implementing Survivorship Care Planning in Two Contrasting Health Systems: Lessons Learned from a Randomized Controlled Trial.

Journal of Cancer Survivorship, Online ahead of print.

[Read More](#)

Salazar MC, Kaminski MF, Canavan ME, Maduka RC, Li AX, Ermer T, Boffa DJ.

Baseline Evaluation of Cancer Mortality in US States that Expanded Medicaid vs Nonexpansion States.

JAMA Oncology, Online ahead of print.

[Read More](#)

J, Hubbard J, Spratt DE, Bylund CL, Swire-Thompson B, Onega T, Scherer LD, Tward J, Fagerlin A.

Cancer Misinformation and Harmful Information on Facebook and Other Social Media: A Brief Report.

Journal of the National Cancer Institute, Online ahead of print.

[Read More](#)

Bass VL, Wong VC, Bullock ME, Gaudet S, Miller-Jensen K.

TNF Stimulation Primarily Modulates Transcriptional Burst Size of NF- κ B-regulated Genes.

Molecular Systems Biology, 17(7):e10127.

[Read More](#)

Funding and Award Opportunities

Crazy 8 Initiative - Alex's Lemonade Stand

ALSF is launching the Crazy 8 Initiative to detail roadmaps for cures for specific, hard-to-treat childhood cancers and pressing topics of the childhood

[Learn More](#)

Yale Cancer Answers

August 8; 7:30 PM

WNPR

Using Nanoparticles to Treat Skin Cancer

W. Mark Saltzman, PhD & Michael Girardi, MD, FAAD

[Learn More](#)

Experts at Your Fingertips: Delivering Optimal Patient Care for Relapsed or Refractory Chronic Myeloid Leukemia

August 9

Nikolai Podoltsev, MD, PhD | Julie Baker, APRN, AOCNP, DNP | Lisa Barbarotta, MSN, ANP-BC, AOCNS | Jorge E. Cortes, MD | Elias Jabbour, MD

[Learn More](#)

Bereavement Seminar

August 10; 5:30 PM

Understanding and Managing Grief: How Long Am I Going to Feel Like This?

[Learn More](#)

Yale Cancer Answers

August 15; 7:30 PM

WNPR

The Role of Transfusion Oncology in the Care of Cancer

Edward Snyder, MD

[Learn More](#)

Yale Head and Neck SPORE's Monthly Meeting

August 18; 6:00 PM

[Learn More](#)

Digestive Health Virtual CME Series 2021

August 19; 5:00 PM

Weight Loss II

Ania Jastreboff, MD, PhD & Artur Viana, MD

[Learn More](#)

Submissions

Please submit your recent publications, awards, and grant announcements to:

[Renee Gaudette](#)

Director, Public Affairs and Communications

cancer community.

Application Deadline: August 12, 2021

Read More

Launching Future Leaders in Global Health (LAUNCH) Research Training Program (D43)

The purpose of this program is to provide opportunities for up to six consortia to develop or expand global health research training programs

Application Deadline: August 20, 2021

Read More

AACR Clinical Oncology Research (CORE) Training Fellowships

This grant program pertains to the following fellowships: AACR-AstraZeneca Clinical Immuno-oncology Research Training Fellowships and AACR-Bayer Clinical Oncology Research Training Fellowships and is designed to provide an effective industry-academic clinical practicum with a unique training opportunity to develop academic clinicians in drug development.

Application Deadline: August 31, 2021

Read More

Yale Cancer Center 2022 Team Challenge Award

An internal grant program focused on advancing the work of teams who seek to address a fundamental research priority that aligns and/or has the potential to successfully extend YCC strategic goals.

Letter of Intent Due: September 1, 2021

Read More

Hope Foundation for Cancer Research 2021 SWOG Coltman Fellowship Program Request for Applications A Career Development Program for Early Career Investigators

The primary purpose of the Fellowship is to engage outstanding early-career investigators from SWOG-affiliated institutions in learning clinical trial methodology within an academic and network group environment that will lead to independent clinical research

Application Deadline: September 1, 2021

Read More

Early Detection Research Network FOAs

The mission of the EDRN is to discover, develop and validate biomarkers and imaging methods to detect early-stage cancers and to assess risk for developing cancer, and to translate these biomarkers and imaging methods into clinical tests. There are three specific units with EDRN:

- Clinical Validation Centers (U01)
- Data Management and Coordinating Center (U24)
- Biomarker Characterization Centers (U2C)

Application Deadlines: September 9, 2021

Read More

DoD Kidney Cancer Research Program

The FY21 Defense Appropriations Act provides funding to the Department of Defense Kidney Cancer Research Program (KCRP) to support research of exceptional scientific merit in the area of kidney cancer.

- **Academy of Kidney Cancer Investigators – Early-Career Investigator Award: Letter of Intent Due:** September 14, 2021
- **Clinical Trial Award – Letter of Intent Due:** September 14, 2021
- **Clinical Research Nurse Development Award – Letter of Intent**

Due: September 14, 2021

Read More

National Comprehensive Cancer Network & Eli Lilly Biomarker Driven Therapy in Lung and Thyroid Cancers

NCCN and Eli Lilly are seeking proposals to improve patient care and outcomes in lung and thyroid cancers. Multiple factors contribute to the complexity of treating these diseases, including stage and histology, personalization of systemic therapy based on molecular profiles, patient factors, and therapeutic landscape.

Application Deadline: September 28, 2021

Read More

Cancer Research Institute Irvington Postdoctoral Fellowship Program

Supports qualified young scientists at leading universities and research centers around the world who wish to receive training in fundamental immunology or cancer immunology. Proposals should include studies that directly impact our understanding of the immune system's role in cancer.

Application Deadline: October 1, 2021

Read More

Technology Development for Single-Molecule Protein Sequencing (R01)

This FOA solicits grant applications to catalyze major advances in single-molecule protein sequencing and single cell proteome analysis through technology development. The goal of this initiative is to achieve technological advances over the next five years that enable generation of protein sequencing data at sufficient scale, speed, cost and accuracy to use routinely in studies of genome biology and function, and in biomedical and clinical research in general.

Application Deadline: October 1, 2021

Read More

The Role of Work in Health Disparities in the U.S. (R01)

The purpose of this FOA is to support innovative population-based research that can contribute to identifying and characterizing pathways and mechanisms through which work or occupation influences health outcomes and health status among populations with health and/or health care disparities, and how work functions as a social determinant of health.

Application Deadline: October 05, 2021

Read More

Integration of Imaging and Fluid-Based Tumor Monitoring in Cancer Therapy (R01)

Through this FOA, the NCI invites R01 grant applications describing projects that integrate imaging and fluid-based tumor monitoring (liquid biopsy) assays during cancer therapy in patients to determine the optimal use of these modalities in the characterization of therapy response and/or emergence of treatment resistance.

Application Deadline: October 5, 2021

Read More

Molecular Imaging of Inflammation in Cancer (R01)

The purpose of this FOA is to invite research grant applications (R01) for the development and use of current and emerging molecular imaging methods to gain fundamental insights into cancer inflammation *in vivo*.

Application Deadline: October 5, 2021

Application Deadline: October 5, 2021

Read More

Cancer Target Discovery and Development (CTD2) (U01)

Through this FOA, the NCI will support the program Cancer Target Discovery and Development. CTD2 is focused on efforts that advance cancer research by bridging the knowledge gap between the large volumes of comprehensive molecular characterizations of many cancer types and studies of the underlying etiology of cancer development, progression, and/or metastasis.

Application Deadline: October 6, 2021

Read More

Metabolic Dysregulation and Cancer Risk Program, Research Grants: a Transdisciplinary Approach to Obesity-Associated Research (U01)

The NCI invites research grant applications for transdisciplinary studies that will enhance our knowledge of the dynamics and underlying mechanisms that link obesity, metabolic dysregulation and increased cancer risk as part of the Metabolic Dysregulation and Cancer Risk Program. Through this FOA, the Metabolic Dysregulation and Cancer Risk Program will focus on metabolic dysregulation as the key process linking obesity with cancer risk.

Application Deadline: October 6, 2021

Read More

Coordinating Center for the Metabolic Dysregulation and Cancer Risk Program: A Transdisciplinary Approach to Obesity-Associated Cancer Research (U24)

Through this FOA, the NCI will support a Coordinating Center to facilitate coordination across the consortium of multiple individual research project grants for the Metabolic Dysregulation and Cancer Risk Program whose overarching goal is to enhance our knowledge of the dynamics, and underlying mechanisms, that link obesity, metabolic dysregulation, and increased cancer risk.

Application Deadline: October 6, 2021

Read More

Cancer Prevention-Interception Targeted Agent Discovery Program (CAP-IT) Centers (U54)

The purpose of this FOA is to solicit applications for Cancer Prevention-Interception Targeted Agent Discovery Program (CAP-IT) Centers (U54). The overall goal of the CAP-IT Program is to establish an agile and effective network infrastructure to undertake collaborative research focusing on precision cancer prevention and interception, with the overarching goal of discovering molecularly or immunologically targeted agents designed to prevent or intercept the oncogenic process in higher-risk populations.

Application Deadline: October 7, 2021

Read More

Cancer Prevention-Interception Targeted Agent Discovery Program (CAP-IT) Data and Resource Coordination Center (CAP-IT DRCC) (U24)

The purpose of this FOA is to solicit Applications for the Cancer Prevention-Interception Targeted Agent Discovery Program (CAP-IT) Data and Resource Coordination Center (CAP-IT DRCC) (U24). The overall goal of this FOA and the companion FOA (U54 CAP-IT Specialized Centers, RFA-CA-21-038) is to establish an agile and effective network infrastructure to undertake collaborative research focusing on precision cancer prevention and interception, with the overarching goal of discovering molecularly or immunologically targeted agents designed to prevent or intercept the oncogenic process in higher-risk populations.

interception, with the overarching goal of discovering molecularly or immunologically targeted agents designed to prevent or intercept the oncogenic process in higher-risk populations.

Application Deadline: October 7, 2021

Read More

Program on the Origins of Gastroesophageal Cancers (R01)

This FOA is to request applications for the Program on the Origins of Gastroesophageal Cancers (R01). This new program will build on recent molecular classifications of gastroesophageal cancers, significant understanding of their cancer genomics, and advances in stem cell research to examine and define how these related cancers initially evolve at the cellular level.

Application Deadline: October 8, 2021

Read More

Coordinating Center for the Program on the Origins of Gastroesophageal Cancers (U24)

This FOA is to request applications for the Coordinating Center, Program on the Origins of Gastroesophageal Cancers (U24). This new program will build on recent molecular classifications of gastroesophageal cancers, significant understanding of their cancer genomics, and advances in stem cell research to examine and define how these related cancers initially evolve at the cellular level.

Application Deadline: October 8, 2021

Read More

CRI Irvington Postdoctoral Fellowship to Promote Racial Diversity

CRI invites applications from candidates who identify as Black or African American, Hispanic or Latino/a American, or American Indian or Alaska Native. CRI is seeking hypothesis-driven, mechanistic studies in both immunology and tumor immunology that aim to directly impact our understanding of the immune system's role in cancer.

Application Deadline: October 21, 2021

Read More

Radiation Oncology-Biology Integration Network (ROBIN) Centers (U54)

The purpose of this FOA is to solicit applications for U54 Research Centers to form the Radiation Oncology-Biology Integration Network (ROBIN). The cadre of ROBIN Centers created through this FOA will establish an agile and effective national radiation oncology network infrastructure that collectively address critical hypothesis-based translational research knowledge gaps on the biological basis of responses in cancer patients who undergo radiation treatments.

Application Deadline: November 1, 2021

Read More

NCI Research Specialist Awards (Laboratory-based Scientist) Award (R50)

This FOA invites grant applications for the Research Specialist Award (R50) in any area of NCI-funded cancer research. This FOA is specifically for laboratory-based scientists and is designed to encourage the development of stable research career opportunities for exceptional scientists who want to continue to pursue research within the context of an existing NCI-funded basic, translational, clinical, or population science cancer research program,

but not serve as independent investigators.

Application Deadline: November 1, 2021

Read More

NCI Research Specialist (Core-based Scientist) Award (R50)

This FOA invites grant applications for the Research Specialist Award (R50) in any area of NCI-funded cancer research. This FOA is specifically for core/shared resource/central scientific support scientists and is designed to encourage the development of stable research career opportunities for exceptional scientists who want to continue to pursue research within the context of an existing NCI-funded basic, translational, clinical, or population science cancer research program, but not serve as independent investigators.

Application Deadline: November 1, 2021

Read More

Cancer Research Institute Technology Impact Award

These grants aim to encourage collaboration between technology developers and clinical cancer immunologists and to generate the proof-of-principle of a novel platform technology in bioinformatics, ex vivo or in silico modeling systems, immunological or tumor profiling instrumentation, methods, reagents and assays, or other relevant technologies that can enable clinician scientists to generate deeper insights into the mechanisms of action of effective or ineffective cancer immunotherapies.

Letter of Intent Due: November 15, 2021

Read More

Understanding Oral HPV Infection, Acquisition, and Persistence in People Living with HIV (R01, R21)

The purpose of these FOAs are to solicit research to better understand the epidemiology and biology of oral HPV infection, its acquisition and persistence, in people living with HIV and elucidate the initial mechanisms related to HPV-associated oral and oropharyngeal cancers and warts in the context of HIV.

Application Deadline: November 18, 2021

Read More

The Hope Foundation for Cancer Research SEED Fund for SWOG Early Exploration and Development 2021

These awards may assist investigators with projects that support the following types of studies: pre-clinical data, secondary data analysis from clinical trials, pilot and feasibility studies (including early stage clinical trials), small, self-contained research projects, or development of research methodology/technology. \$50,000

Application Deadline: December 1, 2021

Read More