

DirectConnect

Inside Yale Cancer Center

March 8, 2019

Announcements

Stephen Lattanzi Joins Waterford Care Center

Stephen C. Lattanzi, MD, has been appointed an Assistant Professor of Clinical Medicine (Medical Oncology) at Yale Cancer Center and is now caring for patients at the Smilow Cancer Hospital Care Center in Waterford. Dr. Lattanzi returns to southeastern Connecticut after having practiced here for nearly two decades until July 2016.



Dr. Lattanzi received his Medical Degree from the UConn School of Medicine, and he completed his Residency in Internal Medicine and Fellowship in Medical Oncology at Dartmouth-Hitchcock Medical Center. He is a former President of the Connecticut Oncology Association. Dr. Lattanzi specializes in the care of patients with all malignancies, but has a particular interest in the care of patients with malignant and benign hematological disorders and gastrointestinal cancers, as well as underserved populations.

Doximity Voting Open

Voting is open through Doximity for *U.S. News & World Report's* annual Best Hospitals Guide. Please take a moment to login to your profile and vote. Access is staggered so some physicians may not receive their email/access to vote until next week, please continue to check. It is important that our reputation through *U.S.*

from the desk of

Charles S. Fuchs, MD, MPH
Director, Yale Cancer Center
and Physician-in-Chief
Smilow Cancer Hospital

Yale
NewHaven
Health
Smilow Cancer
Hospital

Yale **CANCER CENTER**
A Comprehensive Cancer Center Designated
by the National Cancer Institute

[News Center](#)

News & World Report's annual Best Hospitals Guide reflects the high level of care you provide to our patients, and represents the exciting research happening at Smilow Cancer Hospital and Yale Cancer Center.

[Vote Now >>](#)

Bladder Cancer CME Dinner

Yale Urology, Smilow Cancer Hospital, and Yale Cancer Center will host a CME dinner highlighting advances in the medical and surgical treatment of bladder cancer on Wednesday, March 13 in Southport.

[Learn More >>](#)

Breast Cancer CME Dinner

Please join colleagues from the Smilow Cancer Hospital Breast Cancer Program and our Torrington Care Center for a CME Dinner on Wednesday, March 27 at Fairview Farms Golf Course in Harwinton to discuss Demystifying the Risks and Genetics of Breast Cancer and a Review of Treatment Options. The program is free, but registration is required.

[Learn More >>](#)

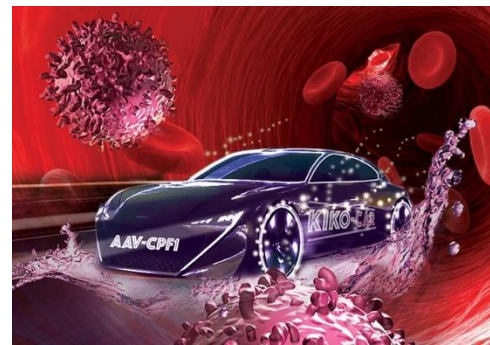
ERCPEUS Workshop

The Center for Advanced Endoscopy & Pancreatic Disease is hosting their 25th Therapeutic ERCPEUS Workshop on Friday, March 22 in the Smilow Auditorium at 55 Park Street. Dr. Harry Aslanian and Dr. Priya A. Jamidar organized this one-day highly interactive workshop into two sessions, featuring live cases and didactic lectures of therapeutic Endoscopic Retrograde Cholangiopancreatography (ERCPE) and Endoscopic Ultrasonography (EUS).

[Learn More >>](#)

Notables

Marcella Nunez-Smith, MD, MHS, Associate Professor of Medicine (General Medicine) and of Epidemiology (Chronic Diseases) and a member of Yale Cancer Center's Cancer Prevention and Control Research Program, has been selected for **Team Science Award** by the **Association for Clinical and Translational Science** on behalf of the Eastern Caribbean Health Outcomes Research Network. Her team includes five primary academic institutions and more than 70 health researchers, research staff, and community leaders, representing 35 organizations in the U.S. and Eastern Caribbean. The group is



Yale Researchers Develop Modular Approach to Engineering Immune Cells

[Read More >>](#)



Congresswoman DeLauro Warns About Jump in Drug Prices

[Read more >>](#)



DeLauro Hears from Researchers Funded by National Institutes of Health

[Read more >>](#)

helping to address disease disparities for millions of adults across the Eastern Caribbean region, New York, and New Jersey with non-communicable diseases including cancer, diabetes, and heart disease.

The Signal Transduction Research Program is proud to welcome **Jesse Rinehart, PhD** to its program. Dr. Rinehart is an Associate Professor in the Department of Cellular and Molecular Physiology.



Dr. Rinehart has focused a significant portion of his research efforts towards understanding the role of protein phosphorylation in biological systems. His program uses innovative combinations of technologies to both discover and synthesize the most important human phosphoproteins. Dr. Rinehart aims to uncover mechanistic links in protein phosphorylation and biological function to identify new therapeutic strategies. His approach combines proteomics with mainstay techniques of molecular biology and physiology to find new roles for kinases and phosphatases, their substrates, and protein-protein interactions on a system-wide level.

Michael Cecchini, MD, has joined the **Developmental Therapeutics**

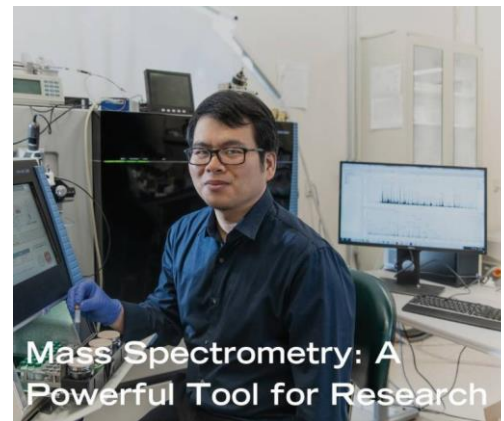


Join Smilow Cancer Hospital on Facebook



Latest Posts:

Advances in mass spectrometry and proteomics are giving researchers new ways to better understand, detect, diagnose, and treat cancer. A year ago, Yale recruited Yansheng Liu, PhD, Assistant Professor of Pharmacology, to bring these innovative tools to the Cancer Biology Institute.



Mass Spectrometry: A Powerful Tool for Research

[Read More >>](#)

Dr. Akiko Iwasaki, a member of Yale Cancer Center's Virus and Other Infection-associated Cancers Research Program, is working to better understand the connection between our immune system and its ability to combat viruses. "Understanding the mechanisms of the immune defense against viruses is vital to helping us combat viral diseases ranging from the common cold to Zika."

Research Program. Dr. Cecchini is an Assistant Professor of Medicine (Medical Oncology).

Dr. Cecchini's research aims to develop novel therapies and combinations for patients with advanced cancer with an added focus targeting DNA repair and gastrointestinal malignancies. His appointment includes clinical and research responsibilities in our Phase I Center and Gastrointestinal Cancers Program. Dr. Cecchini has identified, using the Yale Gastrointestinal Cancers Biorepository, the HRD signature in pancreatic cancer patients who have prolonged chemotherapy responses.

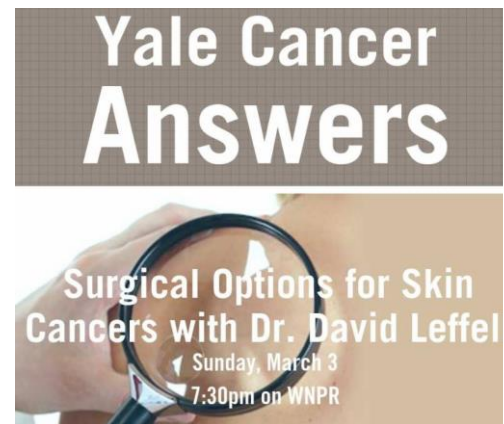


[Read More >>](#)

4.3 million people will be diagnosed with basal cell carcinoma and over 1 million with squamous cell carcinoma in the U.S. this year. Dr. David Leffel discussed the options for skin cancer treatment and surgical removal of skin cancer lesions on Yale Cancer Answers on Connecticut Public Radio. Tune in to learn the latest information, and how to check your skin!

Development Update

Members of the Smilow Cancer Hospital Thoracic Oncology Program joined the Marottoli family and 500 guests for the Melissa Marottoli Hogan Foundation Gala for a Cure last Saturday evening. The event raised awareness for thoracic oncology research and raised \$200,000 for translational lung cancer research at Yale Cancer Center and Smilow Cancer Hospital.



[Read More >>](#)

For many cancer patients, the pathologist remains a signature at the bottom of a report. At Smilow Cancer Hospital, our pathologists have expertise in specific types of cancer and specialize in diagnosing an individual type of cancer. They are an important member of our 13 multidisciplinary cancer teams. Read about Dr. Peter Humphrey, a world-renowned genitourinary cancers pathologist at Yale.

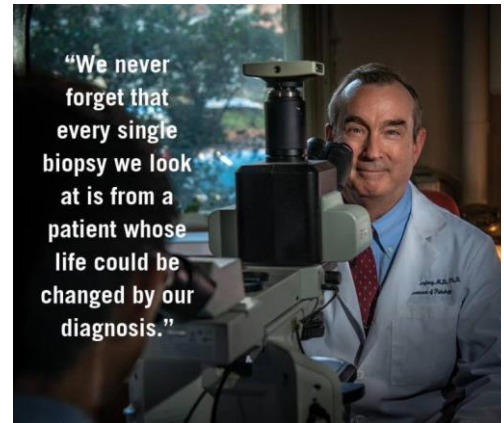


Katie Politi, Senator Richard Blumenthal, Bob Amendola, & Sarah Goldberg



Dr. Roy Herbst and members of the Thoracic Oncology Program address the guests.

Employee Profile: Laura Leary



[Read More >>](#)

Congratulations to Dr. Tanoue, a member of our Thoracic Oncology Program, on the recent recognition of her clinical excellence, devotion, and dedication to patient care by the Connecticut Thoracic Society. Nominated by her peers, the award represents respect and admiration from Dr. Tanoue's colleagues and patients.

**Dr. Lynn
Tanoue**

Recipient of
the 2019
Connecticut
Thoracic
Society
Outstanding
Clinician
Award



[Read More >>](#)

Frederick Wilson, MD, PhD, and colleagues discovered that the MTAP gene is observed to be decreased in approximately 15% of all cancers, and at even higher rates for others - 40% of glioblastomas and 25% of melanomas, urothelial cancers, and pancreatic cancers. Their finding has now translated into a Phase I Clinical Trial for patients with MTAP deletion at Smilow Cancer Hospital.

As Clinical Trials Team Manager for Hematology, Laura Leary oversees a large portfolio of clinical trial protocols for lymphoma and myeloma. Laura works hard ensure her team has the information, equipment, and staff to run each study effectively.



Since starting in her position two years ago, Laura has witnessed the rapid evolution of therapies. "A disease is rarely approached from one angle anymore," she said. "Drug cocktails - combination therapies - as well as cellular therapies like CAR-T are gaining traction, and it is exciting to be part of something bigger than you will ever be."

Laura also works closely with the clinical research assistants and coordinators who form the clinical research team for Hematology. Using the data they gather, Laura runs the DART (disease aligned research team) meeting on a weekly basis for the lymphoma and myeloma specialties. Here, each group reviews new trainings on study amendments, study updates, how patients are doing on study, and what studies are in the pipeline.

While the portfolio of studies for lymphoma has doubled and the myeloma portfolio continues to expand, Laura stays on top of the patient population, ensuring the portfolio of studies meets the diversity of patients' needs.

"Being able to contribute on any level is incredible. The cutting-edge therapeutics are aweing to me, and it is a pleasure to work with such a great team," Laura said.

Rebecca Lilian, Assistant Director for Clinical Trial Operations, said, "Laura's dedication and passion for clinical research shows every day as she tackles new challenges. Early 2019 will be an exciting time as we treat our first set of lymphoma and myeloma research patients on CAR-T investigational therapy. Laura has been pivotal in opening these trials and developing new workflows by collaborating with Yale New Haven Hospital, Smilow Cancer Hospital, Yale University, and the study sponsors."


#OUTOFTHEBLUETHANKS: Matthew Ricci





[Read More >>](#)


Follow Yale Cancer Center on Twitter

Follow us on [twitter](#)

 "While advanced #pancreaticcancer continues to be a challenge, there is optimism for many new therapies currently under investigation in clinical trials including here at Yale Cancer Center."- Dr. Jeremy Kortmanský

 .@BarbaraBurtness and colleagues report PTEN loss is associated with resistance to #cetuximab in patients with head and neck squamous cell carcinoma

 New research .@futuresciencegp led by .@tarasanftmd shows incorporating @AnswersByond5 into clinical practice impacts physician recommendations and cost savings for patients.

 In .@TheLancetOncol Dr. Lajos Pusztai shares his views about developing #immunotherapy drugs to fight #metastaticbreastcancer.

 New research @NatureMedicine led by Dr. Lieping Chen identifies a new technique

YCC #OUTOFTHEBLUETHANKS recognizes Matthew Ricci, an Accountant at Yale Cancer Center. Matt recently helped a faculty member with their K08 grant submission and couldn't have been more eager, helpful, or supportive during the process. Even after they learned there was an issue with the submission, Matt immediately and quickly reworked the application flawlessly. Because of his excellent efforts, which were greatly appreciated, the grant application was submitted successfully and on-time. Thank you, Matt!




Yale Cancer Center's #OUTOFTHEBLUETHANKS program is a staff recognition initiative to show appreciation to employees who have exemplified an above-and-beyond effort or an outstanding contribution to the team. All nominations should be submitted to the Director's Office c/o Anna Raso.


Funding Opportunities


Sontag Foundation Distinguished Scientist Award


The DSA seeks to provide career and research support to early career scientists who demonstrate outstanding promise for making scientific and medical breakthroughs in the field of brain cancer research.


to help target #cancers for #immunotherapy treatment.


 4.3M people will be diagnosed with basal cell carcinoma & over 1M w squamous cell carcinoma in the U.S. this year. Dr. David Leffell will discuss the options for #skincancer treatment & surgery on Yale Cancer Answers. Tune in to learn the latest, and how to check your skin!


 Thank you . @lauriesantos for presenting on the Science of Well-Being at the Bindra Community Cancer Lecture Series today for the at our Waterford Care Center.

 At Smilow Cancer Hospital, our pathologists have expertise in specific types of cancer and specialize in diagnosing an individual type of cancer. Read about Dr. Peter Humphrey, a world-renowned genitourinary cancers pathologist.

 Our Liver Cancer Program discusses the changing landscape of hepatocellular carcinoma (HCC) management today with colleagues from the region. "If we are successful in coming together for HCC patients, the sky is the limit," Dr. Tamar Taddei.

 Dr. Pat LoRusso is spending today on Capitol Hill discussing cancer research with @AACR and junior scientists from around the country. They started with a meeting with @RepPeteKing, a champion for #CancerResearch!

 New research @naturemethods led by @sidichen shows a new way to efficiently engineer #immunecells to boost the ability to fend off #cancer.

 New research @naturemethods led by @sidichen shows a new way to efficiently engineer #immunecells to boost the ability to fend off #cancer.

 Members of our Radiotherapy and Radiobiology Research Program at the "Exploring DNA Repair Pathways as

Application deadline: March 13, 2019

[Learn More >>](#)

Department of Defense Breast Cancer Research Program Funding Opportunities

These funding opps are to support innovative, high-impact research with clinical relevance that will accelerate progress to end breast cancer for Service members, Veterans, and the general public.

- **Breakthrough Award - Level 1 & 2:** The intent of the Breakthrough Award is to support promising research that has high potential to lead to or make breakthroughs in breast cancer. **Letter of Intent Due:** March 14, 2019
- **Breakthrough Fellowship Award:** The Fellowship Award supports recent doctoral or medical graduates in pursuit of innovative, high-impact breast cancer research during their postdoctoral fellowship. **Letter of Intent Due:** March 14, 2019
- **Era of Hope Scholar Award:** The Era of Hope Scholar Award supports individuals early in their careers who have demonstrated significant potential to effect meaningful change in breast cancer. **Letter of Intent Due:** March 14, 2019
- **Innovator Award:** The Innovator Award supports visionary individuals who have demonstrated exceptional creativity, innovative work, and paradigm-shifting leadership in any field including, but not limited to, breast cancer. **Preproposal Due:** March 12, 2019
- **Distinguished Investigator Award:** The Distinguished Investigator Award enables established visionary leaders from any field to pursue innovative ideas that could accelerate progress toward ending breast cancer. **Preproposal Due:** March 12, 2019

[Learn More >>](#)

INvestigation of Co-occurring conditions across the Lifespan to Understand Down syndrome (INCLUDE) Clinical Trial Readiness (R21)

This FOA invites researchers to submit applications for support of clinical projects that address critical needs for clinical trial readiness in Down syndrome.


March 14, 2019

[Learn More >>](#)

Transformative Research Award for the INCLUDE Project (R01)

This RFA seeks to support individual scientists or groups of scientists proposing groundbreaking, exceptionally innovative,

Targets for Cancer Therapy" meeting in the Bahamas this week. Alanna Kaplan, Faye Rogers, Joann Sweasy, Megan King, and Peter Glazer.

 @DanielPetrylak will discuss advances in the treatment of #bladdercancer on Yale Cancer Answers tonight at 7:30pm on @wnpr.

Calendar

March 8, 2019

Sarcoma Tumor Board

10:00AM

NP 4-215B

[Learn More >>](#)

March 8, 2019

Yale SPORE in Skin Cancer Lecture

12:00PM

The Anylan Center, 207

The Contribution of Therapy-Educated Host Cells to Tumor Progression and Metastasis

Yuval Shaked, PhD

[Learn More >>](#)

March 8, 2019

Hematology Tumor Board

1:00PM

NP 4-215B

[Learn More >>](#)

March 8, 2019

Neuro-onc Tumor Board

2:15PM

NP 4-215B

[Learn More >>](#)

March 10, 2019

Yale Cancer Answers

7:30PM

WNPR

Surgical Options for Skin Cancer and Melanoma

original, and/or unconventional research with the potential to create new scientific paradigms, establish entirely new and improved clinical approaches, or develop transformative technologies.

Application Deadline: March 14 2019

[Learn More >>](#)

Clinical Trials Development for INCLUDE (R61/R33)

This FOA encourages Exploratory/Developmental Phased Innovation (R61/R33) grant applications to support development of clinical trials to treat critical and co-occurring health conditions in individuals with Down syndrome.

Application Deadline: March 14, 2019

[Learn More >>](#)

Damon Runyon Cancer Research Foundation Fellowship Award

The Foundation encourages all theoretical and experimental research relevant to the study of cancer and the search for cancer causes, mechanisms, therapies and prevention. Awards are made to institutions for the support of the Fellow under direct supervision of the Sponsor.

Application Deadline: March 15, 2019

[Learn More >>](#)

NCCN Preclinical and Clinical Studies of CDK4 and 6 Inhibition with Abemaciclib for Breast Cancers

NCCN has received a \$2 million research grant from Eli Lilly and Company to support the performance of preclinical, clinical and correlative studies of abemaciclib in the treatment of breast cancer.

RFP Due: March 22, 2019

[Learn More >>](#)

Charles H. Hood Foundation Child Health Research Awards Program

The intent of this Award is to support newly independent faculty, provide the opportunity to demonstrate creativity, and assist in the transition to other sources of funding. Research projects must have direct relevance to child health.

Application Deadline: March 28, 2019

[Learn More >>](#)

NCI Awardee Skills Development Consortium: Research Education Short Courses (UE5)

The overarching goal of this NCI UE5 program is to support educational activities that complement and/or enhance the training of a workforce to meet the nation's biomedical, behavioral and clinical cancer research needs.

Kelly Olino, MD

[Learn More >>](#)

March 11, 2019

Thoracic Tumor Board

7:30AM

NP 4-215B

[Learn More >>](#)

March 11, 2019

Radiobiology and Radiotherapy Research Program Lecture

11:00AM

Giarman Room

Developing Genetically Engineered Animal Models to Investigate Cancer Immunology

Nikhil Joshi, PhD

[Learn More >>](#)

March 11, 2019

Genitourinary Tumor Board

12:00PM

NP 4-215B

[Learn More >>](#)

March 11, 2019

Epigenetics Interest Group Seminar

12:00PM

BCMM 206

Live Cell Dynamics of Homology Directed DNA Double-strand Break Repair

Qin Yan, PhD

[Learn More >>](#)

March 11, 2019

Head and Neck Cancers Tumor Board

3:00PM

NP 4-215B

[Learn More >>](#)

March 12, 2019

Lymphoma/Stem Cell Tumor Board

8:30AM

NP 4-215B

Application Deadline: April 1, 2019

[Learn More >>](#)

Innovative Molecular Analysis Technology Development for Cancer Research and Clinical Care (R43/R44)

This FOA encourages Small Business Innovation Research grant applications from small business concerns proposing research for commercial development of novel cancer-relevant technologies.

Application Deadline: April 5, 2019

[Learn More >>](#)

Cancer Prevention, Diagnosis, and Treatment Technologies for Low-Resource Settings (R43/R44)

This FOA encourages Small Business Innovation Research grant applications from small business concerns proposing commercially-directed research for the development of cancer prevention, diagnosis, or treatment technologies to improve cancer outcomes in low- and middle-income countries, and low-resource settings in the US.

Application Deadline: April 5, 2019

[Learn More >>](#)

Request for Information to Better Facilitate Cancer Systems Epidemiology Research

The NCI seeks broad input from members of the scientific community to identify areas of need and opportunities for interdisciplinary, systems science research focused on cancer risk and prognosis, particularly data analysis and interpretation when applying comprehensive analytical approaches, such as systems or computational modeling, to study of the etiology of cancer.

Response Date: April 30, 2019

[Learn More >>](#)

Recent Publications

Endocrine-related quality of life in a randomized trial of exercise on aromatase inhibitor-induced arthralgias in breast cancer survivors.

Baglia ML, Lin IH, Cartmel B, Sanft T, Ligibel J, Hershman DL, Harrigan M, Ferrucci LM, Li FY, Irwin ML.

Cancer. 2019 Mar 6.

[Read More >>](#)

Effect of a Novel Patient Garment on Perceived Privacy during Colonoscopy: A Simple Approach to Minimize Embarrassment.

[Learn More >>](#)

March 12, 2019

Pathology Research in Progress Talks

9:30AM

TAC N-107

[Learn More >>](#)

March 12, 2019

CNS Mets Oncology Conference

1:00PM

NP 4-215B

[Learn More >>](#)

March 12, 2019

Neuroendocrine Tumor (NET) Support Group

2:00PM

Smilow Cancer Hospital

[Learn More >>](#)

March 12, 2019

Gastrointestinal Cancers Tumor Board

4:30PM

NP 4-215B

[Learn More >>](#)

March 12, 2019

GynOnc Tumor Board

4:30PM

EP 2-646

[Learn More >>](#)

March 12, 2019

Digestive Diseases Research Seminar Series

5:00PM

The Anylan Center S-247

New DNA Repair Alterations in Hereditary Cancer Development

Rosa Munoz Xicola, PhD

[Learn More >>](#)

March 13, 2019

Aamar A, Butt Z, Madhani K, Hussain I, Garsten J, Aslanian H.
Gastroenterol Res Pract. 2019 Jan 27;2019:2467101.

[Read More >>](#)

The case for radiotherapy in a Value based environment.

Johnstone PAS, Peneguy S, Showalter TN, Yu JB.
Rep Pract Oncol Radiother. 2019 Mar-Apr;24(2):200-203.

[Read More >>](#)

Ocular Immune-Related Adverse Events of Immunotherapy-A Single-Site Case Series.

Kim JM, Materin MA, Sznol M, Kluger H, Weiss S, Chow J, Stoessel K, Kombo N, Del Priore L, Pointdujour-Lim R.
Ophthalmology. 2019 Feb 5.

[Read More >>](#)

Siglec-15 as an immune suppressor and potential target for normalization cancer immunotherapy.

Wang J, Sun J, Liu LN, Flies DB, Nie X, Toki M, Zhang J, Song C, Zarr M, Zhou X, Han X, Archer KA, O'Neill T, Herbst RS, Boto AN, Sanmamed MF, Langermann S, Rimm DL, Chen L.

Nat Med. 2019 Mar 4.

[Read More >>](#)

Taking to Bed at the End of Life.

Gill TM, Gahbauer EA, Leo-Summers L, Murphy TE.
J Am Geriatr Soc. 2019 Mar 4.

[Read More >>](#)

Sexual minority men and the experience of undergoing treatment for prostate cancer: An integrative review.

Moore MA, Batten J, Lazenby M.
Eur J Cancer Care (Engl). 2019 Mar 3:e13031.

[Read More >>](#)

A National Survey of Radiation Oncologists and Urologists on Perceived Attitudes and Recommendations of Active Surveillance for Low-Risk Prostate Cancer.

Endocrine Tumor Board

7:30AM

NP 4-215B

[Learn More >>](#)

March 13, 2019

Pediatric Grand Rounds

12:00PM

Fitkin Amphitheatre

Lessons Learned in Pediatric Palliative Care

Angela Anderson, MD

[Learn More >>](#)

March 13, 2019

Myeloma Oncology Conference

12:00PM

NP 4-215B

[Learn More >>](#)

March 13, 2019

Cancer Immunology Research Program Seminar

12:00PM

SHM C-428

Developing NINJA Mice for Investigating Anti-tumor Immune Responses in Cancer

Nikhil Joshi, PhD

[Learn More >>](#)

March 13, 2019

Breast Tumor Board

4:30PM

NP 4-215B

[Learn More >>](#)

March 13, 2019

Yale Cancer Center Bladder Cancer CME Dinner

5:00PM

Artisan at Delamar

Advances in the Medical and Surgical Treatment of Bladder Cancer

[Learn More >>](#)

Kim SP, Tilburt JC, Shah ND, Yu JB, Konety B, Nguyen PL, Abouassaly R, Williams SB, Gross CP.

Clin Genitourin Cancer. 2019 Feb 7.

[Read More >>](#)

Evaluation of Lymph Node Ratio Association With Long-term Patient Survival After Surgery for Node-Positive Merkel Cell Carcinoma.

Cheraghlou S, Agogo GO, Girardi M.

JAMA Dermatol. 2019 Mar 2.

[Read More >>](#)

Immunotherapy in Non-Small Cell Lung Cancer: Facts and Hopes.

Doroshov DB, Sanmamed MF, Hastings K, Politi K, Rimm DL, Chen L, Melero I, Schalper KA, Herbst RS.

Clin Cancer Res. 2019 Mar 1.

[Read More >>](#)

Yttrium-90 Radioembolization Is Cost Effective in Intrahepatic Cholangiocarcinoma: A SEER Medicare Population Study.

Ghodadra A, Xing M, Zhang D, Kim HS.

J Vasc Interv Radiol. 2019 Mar;30(3):293-297.

[Read More >>](#)

A new perspective on oxidation of DNA repair proteins and cancer.

Alnajjar KS, Sweasy JB.

DNA Repair (Amst). 2019 Feb 18;76:60-69.

[Read More >>](#)

High-throughput Evaluation of Protein Migration and Localization after Laser Micro-Irradiation.

Oeck S, Malewicz NM, Kryzstofiak A, Turchick A, Jendrosseck V, Glazer PM.

Sci Rep. 2019 Feb 28;9(1):3148.

[Read More >>](#)

PTEN loss is associated with resistance to cetuximab in patients with head and neck squamous cell carcinoma.

March 14, 2019

Melanoma Tumor Board

7:30AM

NP 4-215B

[Learn More >>](#)

March 14, 2019

Liver/Transplant Tumor Board

1:00PM

NP 4-215B

[Learn More >>](#)

March 14, 2019

Cancer Genetics and Prevention Program Seminar

2:30PM

Orchard Medical Center, 107

An Incidental FANCM Mutation - Now What?" and "Early-onset Breast Cancer in Individuals with Neurofibromatosis: A Case Presentation

Amy Killie, CGC and Jonica Richards, CGC

[Learn More >>](#)

March 14, 2019

Pediatric Tumor Board

4:00PM

NP 4-215B

[Learn More >>](#)

March 15, 2019

Sarcoma Tumor Board

10:00AM

NP 4-215B

[Learn More >>](#)

March 15, 2019

Precision Medicine Tumor Board

11:30AM

NP 4-215B

[Learn More >>](#)

March 15, 2019

Hematology Tumor Board

1:00PM

Eze N, Lee J, Yang D, Zhu F, Neumeister V, Sandoval-Shaefer T, Mehra R, Ridge J, Forastiere A, Chung C, Burtness B.

Oral Oncology, volume 91, April 2019.

[Read More >>](#)

Immunotherapy and targeted therapy combinations in metastatic breast cancer.

Esteva F, Hubbard-Lucey V, Tang J, Pusztai L

Lancet Oncology, Volume 20, Issue 3, March 2019.

[Read More >>](#)

NP 4-215B

[Learn More >>](#)

March 15, 2019

Virus and Other Infection-associated Cancers Lecture

1:00PM

SHM I-116

Reducing Mortality of What Will Be the #3 Cause of Cancer Death Two Years from Now

Harvey Risch, MD, PhD

[Learn More >>](#)

March 15, 2019

Neuro-Onc Tumor Board

2:15PM

NP 4-215B

[Learn More >>](#)

March 16, 2019

11:00AM

Smilow Screening & Prevention Informational Table: National Colorectal Cancer Awareness Month Event

Fairfield Health & Fitness EXPO

[Learn More >>](#)

March 17, 2019

Yale Cancer Answers

7:30PM

WNPR

Young Adult Oncology

Asher Marks, MD

[Learn More >>](#)

Submissions

Please submit your recent publication and grant announcements to:

Renee Gaudette

Director, Public Affairs and Communications