

October 25, 2019

Announcements



Smilow Cancer Hospital Celebrates 10th Anniversary

Tomorrow, October 26, marks 10 years since our first patient was treated at Smilow Cancer Hospital! We have so much to celebrate, and much to be thankful for over the last decade of growth, accomplishment, and achievement at Smilow Cancer Hospital, Yale Cancer Center, and at our Care Centers. The tremendous success in patient growth and care and advances in cancer treatment in care are all because of the outstanding physicians, scientists,

nurses, caregivers, and staff we have throughout our hospital, cancer center, and entire cancer enterprise. I thank each and every one of you and over the next year, I look forward to sharing many opportunities to reflect on our success, celebrate our progress, and plan for our future during a year-long campaign for Smilow10!

National Academy of Medicine

I am extremely proud to announce that four Yale Cancer Center members have been elected to the National Academy of Medicine (NAM), one of the highest honors in our field. Please join me in congratulating **Nita Ahuja, MD, MBA**; **Jorge Galán, DVM, PhD**; **Akiko Iwasaki, PhD**; and **David G. Schatz, PhD**, on this tremendous achievement. These distinguished faculty members are among 100 new members who were selected for



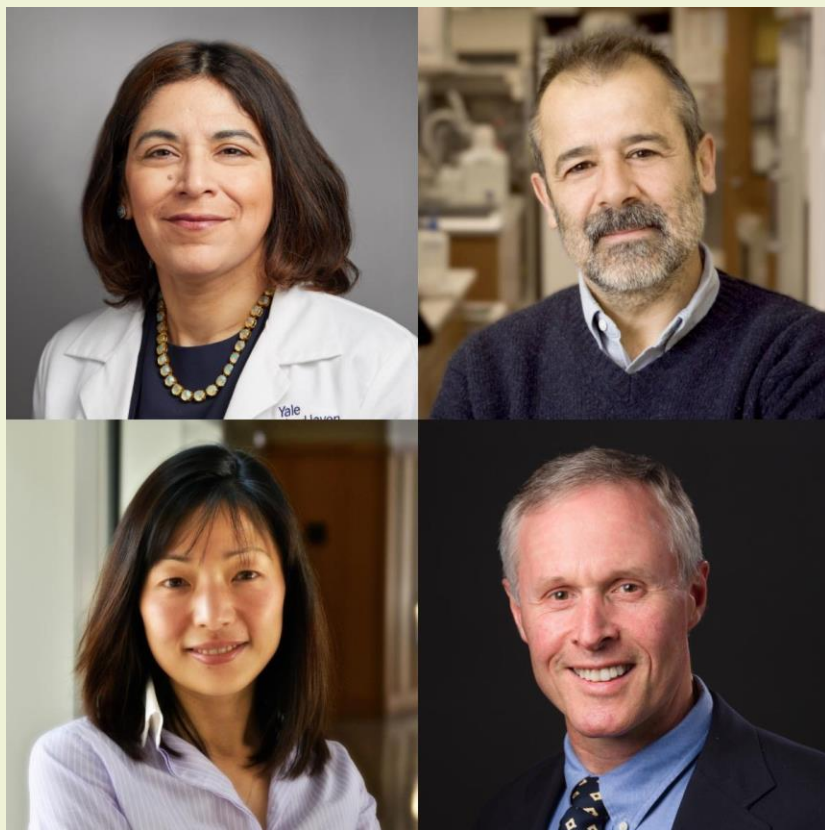
from the desk of
Charles S. Fuchs, MD, MPH
Director, Yale Cancer Center
and Physician-in-Chief
Smilow Cancer Hospital

Yale
NewHaven
Health
Smilow Cancer
Hospital

Yale **CANCER CENTER**
A Comprehensive Cancer Center Designated
by the National Cancer Institute

[News Center](#)

their outstanding contributions to the field of medicine nationally.



Smilow Luminary Awards

I was pleased to join Marna Borgstrom and Lori Pickens last week for the presentation of the first annual Smilow Luminary Awards of Excellence to nearly 50 of our exceptional staff members. The Awards honor people who consistently exceed performance expectations and deliver high-quality cancer care for patients, families and the health system throughout the year. The award categories are:

Community Service

Honors members of the organization that have aided the cancer community in extraordinary ways.

Optimization/Innovative Solutions

Honors members of the organization who develop or support developments in innovation or optimizing a system or process.

Leadership

Yale
NewHaven
Health

Hartford
HealthCare

PROTON
INTERNATIONAL

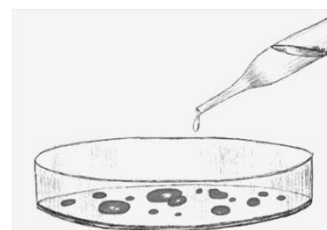
Connecticut's two leading health systems partner to bring new cancer treatment to state

[Read More >>](#)



Gene boost makes cancer more visible

[Read More >>](#)



Yale scientists hijack cancer immune response

[Read More >>](#)

Honors members of the organization that demonstrate leadership in patient safety and quality improvement.

Patient Experience

Honors members of the organization who go above and beyond to provide an excellent cancer care experience for our patients and families.



Our 2019 Awardees are:

Community Service

Jose DeJesus

Debra Nadaskay

Elena Ratner, MD

Optimization

Lynnanne Selezan

Leadership

Carolyn Truini

Julie Papascoe

Leigh Rooney

Brian Jin

Shannon Ramos

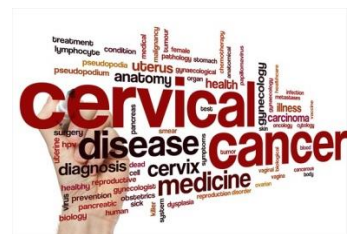
Patient Experience

Rachel Abraham	Kelly Ford	Andrea Lucibello
Michelle Armellino	Pamela Fitzgerald	Sabrina Paradis
Denise Armstrong	Cheryl Gaffney	Halley Robinson
Susan Beno	Antoinette Graziano	Jessica Rodriguez
Stephanie Cerrtio	Briana Gregoire	Edward Schwartz
Hannah Chatillon	Amberlie Hoydic	Constance Smith
Jennifer Cohen	Brian Jin	Jessica Stein
Evelyn Corporan	Angela Khairallah	Michael Stevenson
Susan Crawford	Christin Knowlton, MD	Mary Strauss
Vanna Dest	Johanna LaSala, MD	Lee Tremback



News 8 On Call: Men Get Breast Cancer Too

[Read More >>](#)

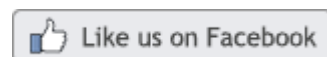


Yale Cancer Center Scientists Build Genomic Research Platform to Help Treat Cervical Cancer

[Read More >>](#)



Join Smilow Cancer Hospital on Facebook



Latest Posts:

We appreciate the caring support of our medical assistants each and every day, but want to take a moment to thank and celebrate them this week during Medical Assistants Week. Here are a few, familiar

Shari Damast, MD	Susanne Lee-Baldassini	Jocelyn Wallis
Laura Donnelly	Gena Lennon-Gomez	Maria Wasko
Janice Douglas	Liora Lew	Diane Viveiros

Esophageal Cancer Symposium

Please join us for an Esophageal Cancer CME Symposiums hosted by Yale Cancer Center and Smilow Cancer Hospital on November 1 at Yale West Campus. The programs is free, but registration is required.

[Learn More >>](#)

Hematological Malignancies Symposium

Smilow Cancer Hospital at Saint Francis and Yale Cancer Center invite you to join colleagues and experts in hematological malignancies from around the nation on Friday, November 15 at the Connecticut Convention Center. The program is free, but registration is required.

[Learn More >>](#)

[Fellows Research Competition >>](#)

Notables

Antonio Omuro, MD, Professor of Neuro-Oncology and Director of the Brain Tumor Center at Smilow Cancer Hospital, has been named **Chair of Yale Cancer Center's Protocol Review Committee II**. Dr. Omuro has previous leadership experience on protocol review committees and knowledge of the CCSG requirements for protocol review and monitoring. We look forward to his additional leadership at Yale Cancer Center.

Herta Chao, MD, PhD, Associate Professor of Medicine (Medical Oncology), presented the Department of Internal Medicine's inaugural **The Second Century of Women at Yale: Emerging Leaders in Internal Medicine Medical Grand Rounds** on "Cognitive Side Effects of Cancer Therapy" last week.

Peter Glazer, MD, PhD, and **W. Mark Saltzman, PhD**, have received a new grant in collaboration with colleagues at

smiling faces - thank you for all you do for Smilow and our patients!



[Read More >>](#)

Last night CPTV's Life Lessons hosted a discussion on cancer risk factors, early detection, treatment options, and supportive care with Drs. Adam Boruchov, Gary Soffer, Dwain Fehon, and Karishma Mehra.



[Read More >>](#)

Congratulations to Eliza and Ian! We're so happy that your father was able to be with you to celebrate your special day.

Carnegie Mellon University from the National Institutes of Health's **Somatic Cell Genome Editing (SCGE) Program**.

Lynn Savic, MD, a postdoctoral research fellow in Yale Interventional Oncology, received a **Radiological Society of North America Trainee Research Prize** for her work on Novel Molecular Imaging Biomarkers for Immune Response to Liver Cancer Therapy.

The Cancer Prevention and Control Research Program is proud to welcome **Harry R. Aslanian, MD**. Dr. Aslanian is a Professor of Medicine (Digestive Diseases) and serves as the Director of Endoscopic Ultrasound and of the Yale Advanced Endoscopy Fellowship as part of the Smilow Interventional Endoscopy Group. His clinical activities are focused on the diagnosis and management of pancreas and biliary disorders, including pancreas cysts, pancreas cancer, cholangiocarcinoma and indeterminate biliary strictures; dysplasia in the setting of Barrett's esophagus, the staging and treatment of early esophageal cancer, endoscopic palliation of strictures related to esophageal, pancreas and colon cancer; endoscopic resection of early esophageal, gastric, and colon cancer and the management of colon polyps. The majority of Dr. Aslanian's practice is related to the staging, diagnosis, or prevention of gastrointestinal cancers.



Research Highlights



[Read More >>](#)

Ting Yi was unexpectedly diagnosed with a cyst in her bile duct that needed to be removed immediately by surgery. "I have a PhD science background and did post-doctoral work at Yale, and so I had a lot of questions, very technical questions, for Dr. [Charles] Cha," she said.

During Ting's eight-hour surgery, Dr. Cha sat at a console and used a joystick to manipulate the three robotic arms plus a dual-channel camera arm, which provides a 3D magnification of the surgical site. He pressed a foot pedal to switch between the arms. "There's a misconception that robotic surgery is something automated," Dr. Cha said. "There is nothing automated about it."



[Read More >>](#)

Thank you to our team of physician scientists who



A Yale-developed drug shows promise as immune therapy for cancer

A therapy developed by Yale Cancer Center researchers stimulates immune cells to shrink or kill tumors in mice, according to a new study published in the *Journal of Experimental Medicine*. The therapy is effective alone or in combination with existing cancer immunotherapies, and it appears to have lasting effects, the researchers said.

The research team, led by Yale Cancer Center members **Akiko Iwasaki, PhD**, and **Anna Pyle, PhD**, examined whether a synthetic RNA molecule developed to fight viruses could also trigger an immune response against tumors. The molecule, called Stem Loop RNA 14 (SLR14), was specifically designed to activate a gene that detects viruses and other threats in cells.

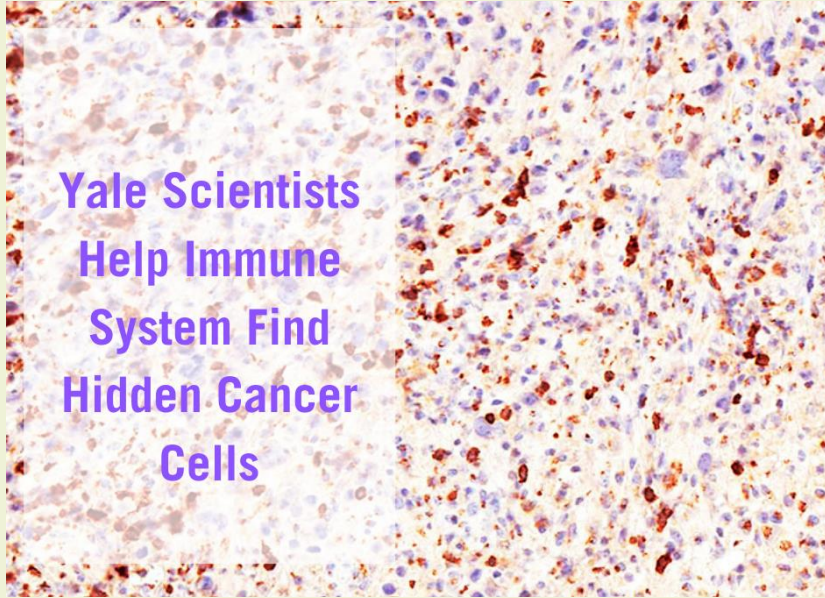
[Learn More >>](#)

presented their latest research during the Interventional Oncology & Immunology session yesterday during the American Society of Digestive Disease Interventions meeting in NYC.



[Read More >>](#)

The 2019 11th Annual Beach Jam for Breast Cancer, held in August at the Westbrook Elks Club, raised \$25,000 for patient assistance at the Breast Center at Smilow Cancer Hospital. The Beach Jam is attended by hundreds of people every year and has provided nearly \$200,000 for breast cancer patient support since its inaugural year, and we are very grateful for the tremendous effort and spirit that is poured into each event.



Cancer cells are masters at avoiding detection, but a new system developed by Yale Cancer Center scientists can make them stand out from the crowd and help the immune system spot and eliminate tumors that other forms of immunotherapies might miss, the researchers reported in the journal *Nature Immunology*.

The new system reduced or eliminated melanoma and triple-negative breast and pancreatic tumors in mice, even those located far from the primary tumor source, the researchers report. This is an entirely new form of immunotherapy," said **Sidi Chen, PhD**, assistant professor of genetics and senior author of the study.

[Learn More >>](#)

Yale Cancer Center Annual Award Nominations

Nominations for Annual YCC Awards: Yale Cancer Center is pleased to announce our call for nominations for our annual awards in the areas of excellence in research and clinical care. Each award will be announced at the Yale Cancer Center Conclave in January. The nomination deadline for all awards is **Friday, November 1st**.

Yale Cancer Center Research Prizes: Research Prizes will be awarded in support of excellence in the areas of basic science, clinical science, translational science, and population science. Awards will be chosen in each area to recognize a paper that is



[Read More >>](#)

Stop by the Big Y in North Branford or North Haven this month and purchase one of their community bags and a portion of the purchase will support Smilow Cancer Hospital! If you're in these neighborhoods, please share this with your friends and spread the word!



[Read More >>](#)

Follow Yale Cancer Center on Twitter

Follow us on [twitter](#)


considered to have had the greatest impact on the field this year. The nominee must be a current member of Yale Cancer Center and science in the publication must be cancer-focused. To be eligible, the nominee must also be either the first or last author of the publication. Please submit a PDF of the publication (publication date must be between October 2018 to October 2019) along with the category it should be considered for via email to anna.raso@yale.edu


Yale Cancer Center Award for Clinical Excellence: This award will be given to the physician who best exemplifies excellence in clinical care including super clinical skills, use of a patient- and family-centered approach to care, and inclusion of a multi-disciplinary care model. Nominee must be a current member of Yale Cancer Center. Please nominate yourself or a peer and send a brief nomination letter (one-page maximum) via email to anna.raso@yale.edu


Yale Cancer Center Lifetime Achievement Award: Yale Cancer Center recognizes the achievements of one of our senior members through our annual Lifetime Achievement award. Nominee must be a current member of Yale Cancer Center. Please send nomination suggestions for the award via email to anna.raso@yale.edu


Ruth McCorkle Oncology Advanced Practice Provider Award: This annual award from Yale Cancer Center/Smilow Cancer Hospital recognizes the contributions of our Nurse Practitioner and Physician Assistant colleagues who contribute so much to oncology patient care. Please consider nominating yourself or a colleague for this award. Nominations are due for the Ruth McCorkle Award to [Dawn Kapinos](#) by November 30, 2019.


[Nomination Form >>](#)


 On .@CPTVOnline's program Life Lessons tonight at 8pm our experts talk about #cancer care, including the use of complementary therapies and where to find emotional support.

 .@SidiChen shared his latest research on @NakedScientists podcast showing how a gene boost can unmask #cancer cells and help provide a target for the immune system.

 Good news for patients in Connecticut needing advanced #radiation treatment for #cancer! .@ynhhealth is partnering with @HartfordHealthC to bring @ProtonINTL's #protonbeam therapy to our patients.

 Watch our #cancer experts on .@CPTVOnline's program Life Lessons tomorrow at 8pm to learn about risk factors, early detection and latest treatments.

 Thank you to our Grand Rounds speakers today @PJAnanthmd talking about #pediatriccancer end of life care and Dr. Rachel Perry explaining #obesity and breaking the link to #cancer.

 Congratulations to Yale Cancer Center members .@NitaAhujaMD, Dr. Jorge Galán, .@VirusesImmunity Dr. Akiko Iwasaki, and Dr. David G. Schatz on their election to @theNAMedicine! It's one of the highest honors in medicine.

 Men get #breastcancer

Employee Profile: Danielle Welz

For a patient who has been newly diagnosed with cancer, the first visit with their care team can be overwhelming. Danielle Welz, Ambulatory Care Associate in The Breast Center at Smilow Cancer Hospital, tries to make that visit a little less daunting. She is often the first person a patient meets, and she strives to set a positive tone from the start.

In addition to making sure patients and their family members are comfortable and have everything they need, Danielle also takes vitals and assists with in-office procedures like punch biopsies, core biopsies, seromas, and aspirations.

"When patients come in they are nervous. They are here to find out more about their prognosis and care plan. Most of the time they leave with a sense of reassurance and it's a privilege to be able to play a small role in that," said Danielle. "We follow patients for many years, and you build relationships with them. It's an amazing feeling to see women come in after finishing treatment, and they are starting to look and feel like themselves again."

Danielle has been in her current role for two years, and enjoys working with this patient population. She commented that it is not always a good outcome, and everyone handles things differently, but she tries to be what each person needs in that moment. Camille Servodidio, Program Manager for Women's Oncology Services, commented, "Danielle delivers patient-centered care and listens to her patients. She is a strong patient advocate and demonstrates compassion and empathy in her daily interactions with patients."



Recent Publications

Seronegative autoimmune autonomic ganglionopathy from dual

too! Watch Dr. Andrea Silber explain to @JocelynMaminta@WTNH the warning signs as early detection is critical.

Thank you to our .@YaleCancer team who presented their latest research during the Interventional Oncology & Immuno-Oncology session yesterday during the @DDInterventions meeting in NYC

We are so proud to honor 50 awardees at our 1st annual Smilow Cancer Hospital Luminary Awards of Excellence. These staff members exceed performance expectations and help to deliver high quality #cancer care for our patients & families.

In honor of #NationalMammographyDay, remember to schedule your annual #mammogram! Early detection saves lives!

Physical therapist .@ScottCapozza, a #cancer survivor, talks to @cure_magazine about how movement can help with side effects and cancer recovery for patients.

A new technique is giving better insight into cells and #cancer biology. Learn more with @RongFan8@YaleCancer Grand Rounds! Watch his presentation online

A newly developed #genomics research platform may help fight #cervicalcancer. New research @PNASNews led by Dr. Alessandro Santin has

immune checkpoint inhibition in a patient with metastatic melanoma. Phase Ib trial of gemcitabine with yttrium-90 in patients with hepatic metastasis of pancreaticobiliary origin.

Nezami N, Camacho JC, Kokabi N, El-Rayes BF, Kim HS.

J Gastrointest Oncol. 2019 Oct;10(5):944-956.

[Read More](#) >>

Modeling of implementation of the new Organ Procurement and Transplantation Network/United Network for Organ Sharing policy for patients with hepatocellular carcinoma.

Kokabi N, Nezami N, Xing M, Ludwig JM, Strazzabosco M, Kim HS.

J Comp Eff Res. 2019 Sep;8(12):993-1002.

[Read More](#) >>

Trusting the GPS: Going Home.

McCorkle R.

Cancer Nurs. 2019 Nov/Dec;42(6):515-516.

[Read More](#) >>

Molecular biology and evolution of cancer: from discovery to action.

Somarelli JA, Gardner H, Cannataro VL, Gunady EF, Boddy AM, Johnson NA, Fisk JN, Gaffney SG, Chuang JH, Li S, Ciccarelli FD, Panchenko AR, Megquier K, Kumar S, Dornburg A, DeGregori J, Townsend JP.

Mol Biol Evol. 2019 Oct 23.

[Read More](#) >>

Patterns of pain medication use associated with reported pain interference in older adults with and without cancer.

Davidoff AJ, Canavan ME, Feder S, Wang S, Sheinfeld E, Kent EE, Kapo J, Presley CJ.

Support Care Cancer. 2019 Oct 21.

[Read More](#) >>

Deep learning based on standard H&E images of primary melanoma tumors identifies patients at risk for visceral recurrence and death.

Kulkarni PM, Robinson EJ, Sarin Pradhan J, Gartrell-Corrado RD, Rohr BR, Trager MH, Geskin LJ, Kluger HM, Wong PF, Acs B, Rizk EM, Yang C, Mondal M, Moore MR, Osman I, Phelps R, Horst BA, Chen ZS, Ferringer T, Rimm DL, Wang J, Saenger YM.


Clin Cancer Res. 2019 Oct 21.

[Read More](#) >>

A new approach to predicting risk for N2 disease in non-small cell lung cancer.


identified #genetic mutations driving the disease and validated drugs to target & block the mutations.


 Join us for a #CME Symposium on #esophagealcancer on November 1 at @YaleWestCampus.

 During a recent visit to .@YaleCancer Dr. Marcela del Carmen @MassGeneralIMDs@harvard med presented on physician well-being in an academic medical practice.

 .Promising new research .@JCO_ASCO led by @BarbaraBurtness for #headandneckcancer patients. The study shows bevacizumab with #chemotherapy improves survival and promotes new studies of antiangiogenics with immune checkpoint inhibitors.

 New research led by .@RimmPathology published in @CCR_AACR shows PD-L1 levels in macrophages are associated with the level of PD-L1 in tumor cells and play an important role in prediction of treatment response for patients.

 We welcomed all of our faculty and staff to today's Grand Rounds to hear the exciting updates on the current research and clinical state of @YaleCancer and #Smilow Cancer Hospital from Director @charlesfuchsmid.

 Promising new #immunotherapy research led by .@VirusesImmunity Dr. Akiko Iwasaki and Dr. Anna

Decker RH, Blasberg JD.
J Thorac Dis. 2019 Sep;11(Suppl 15):S1973-S1975.

[Read More >>](#)

Impact of contralateral lymph nodal involvement and extranodal extension on survival of surgically managed HPV-positive oropharyngeal cancer staged with the AJCC eighth edition.

Miccio JA, Verma V, Kelly J, Kann BH, An Y, Park HS, Eskander A, Burtness B, Husain Z.

Oral Oncol. 2019 Oct 17;99:104447.

[Read More >>](#)

Identification and Validation of a Novel Biologics Target in Triple Negative Breast Cancer.

Wali VB, Patwardhan GA, Pelekanou V, Karn T, Cao J, Ocana A, Yan Q, Nelson B, Hatzis C, Pusztai L.

Sci Rep. 2019 Oct 17;9(1):14934.

[Read More >>](#)

Whole-exome sequencing of cervical carcinomas identifies activating ERBB2 and PIK3CA mutations as targets for combination therapy.

Zammataro L, Lopez S, Bellone S, Pettinella F, Bonazzoli E, Perrone E, Zhao S, Menderes G, Altwerger G, Han C, Zeybek B, Bianchi A, Manzano A, Manara P, Cocco E, Buza N, Hui P, Wong S, Ravaggi A, Bignotti E, Romani C, Todeschini P, Zanotti L, Odicino F, Pecorelli S, Donzelli C, Ardighieri L, Angioli R, Raspagliesi F, Scambia G, Choi J, Dong W, Bilguvar K, Alexandrov LB, Silasi DA, Huang GS, Ratner E, Azodi M, Schwartz PE, Pirazzoli V, Stiegler AL, Boggon TJ, Lifton RP, Schlessinger J, Santin AD.

Proc Natl Acad Sci U S A. 2019 Oct 17. pii: 201911385.

[Read More >>](#)

Seronegative autoimmune autonomic ganglionopathy from dual immune checkpoint inhibition in a patient with metastatic melanoma.

Gao CA, Weber UM, Peixoto AJ, Weiss SA.

J Immunother Cancer. 2019 Oct 17;7(1):262.

[Read More >>](#)


Phase III Randomized Trial of Chemotherapy With or Without Bevacizumab in Patients With Recurrent or Metastatic Head and Neck Cancer.

Argiris A, Li S, Savvides P, Ohr JP, Gilbert J, Levine MA, Chakravarti A, Haigentz M Jr, Saba NF, Ikpeazu CV, Schneider CJ, Pinto HA, Forastiere AA, Burtness B.

J Clin Oncol. 2019 Oct 16:JCO1900555.

[Read More >>](#)

Pyle in the Journal of Experimental Medicine shows a new treatment that can stimulate immune cells to shrink or kill #cancerous tumors in mice.

 New research .@NatImmunol led by @SidiChen@charlesfuchsmid can help the #immunesystem find hidden #cancer cells and potentially help treat patients with #melanoma, #breastcancer and #pancreaticcancer.

Calendar

Smilow Screening & Prevention Informational Table

October 26; 12:00 PM

480 Sherman Parkway
New Haven Probate Court
Service Center's 1st Annual
*Appreciation Day and
Resource Fair*

[Learn More >>](#)

Smilow Screening & Prevention Informational Table

October 26; 1:00 PM

1 Mohegan Sun Boulevard
*Sisters Journey 21st Annual
Pink Tea*

[Learn More >>](#)

Yale Cancer Answers

October 27; 7:30 PM

WNPR
Myeloma Clinic
Natalia Neparidze, MD

[Learn More >>](#)

Radiobiology and Radiotherapy Research Program

Immune cell PD-L1 co-localizes with macrophages and is associated with outcome in PD-1 pathway blockade therapy.

Liu Y, Zugazagoitia J, Ahmed FS, Henick BS, Gettinger S, Herbst RS, Schalper KA, Rimm DL.

Clin Cancer Res. 2019 Oct 15.

[Read More >>](#)

Multiplexed activation of endogenous genes by CRISPRa elicits potent antitumor immunity.

Wang G, Chow RD, Bai Z, Zhu L, Errami Y, Dai X, Dong MB, Ye L, Zhang X, Renauer PA, Park JJ, Shen L, Ye H, Fuchs CS, Chen S.

Nat Immunol. 2019 Oct 14.

[Read More >>](#)

Robotic Tumor Debulking Off External Iliac Vessels For Management of Recurrent Ovarian Cancer.

Mutlu L, Khadraoui W, Khader T, Menderes G.

J Minim Invasive Gynecol. 2019 Oct 11.

[Read More >>](#)

Applications of artificial intelligence in neuro-oncology.

Aneja S, Chang E, Omuro A.

Curr Opin Neurol. 2019 Oct 10.

[Read More >>](#)

Quantitative assessment of CMTM6 in the tumor microenvironment and association with response to PD-1 pathway blockade in advanced-stage non-small-cell lung cancer.

Zugazagoitia J, Liu Y, Toki M, McGuire J, Ahmed FS, Henick BS, Gupta R, Gettinger S, Herbst R, Schalper KA, Rimm DL.

J Thorac Oncol. 2019 Oct 9.

[Read More >>](#)

Inpatient pain management in sickle cell disease.

Zassman SM, Zamora FJ, Roberts JD.

Am J Health Syst Pharm. 2019 Oct 12.

[Read More >>](#)

Fertility preservation in gynecologic cancers.

Taylan E, Oktay K.

Gynecol Oncol. 2019 Oct 8.

[Read More >>](#)

Intratumoral delivery of RIG-I agonist SLR14 induces robust antitumor responses.

Jiang X, Muthusamy V, Fedorova O, Kong Y, Kim DJ, Bosenberg M, Pyle AM, Iwasaki A.

October 28; 11:00 AM

Sterling Hall of Medicine,
SHM I-304

The DNA Damage and Mitotic Machinery Working in Concert to Promote Genome Stability

Lilian Kabeche, PhD

[Learn More >>](#)

Yale Cancer Center Seminar

October 28; 12:00 PM

Winchester Building,
WWW208

Venetoclax with Hypomethylating Agent in Acute Myeloid Leukemia

Abhishek Maiti, MBBS

[Learn More >>](#)

Genetics Clinical Grand Rounds

October 29, 10:15 AM

Sterling Hall of Medicine,
SHM I-304

Understanding Disorders of Ubiquitylation Using Forward and Reverse Genetics

David Beck, MD, PhD

[Learn More >>](#)

Yale Cancer Center Grand Rounds

October 29; 12:00 PM

55 Park Street, Park Street Auditorium

Community-Engaged Research with Faith-Based Communities: How to create long-standing partnerships

Lorna McNeill, PhD, MPH

[Learn More >>](#)

Dermatology Presents Schechner Memorial Lecture

October 30; 10:00 AM

Fitkin Memorial Pavilion Auditorium, LMP 1094

Principles of Skin Epithelial

J Exp Med. 2019 Oct 10.

[Read More >>](#)

A Semiquantitative Scoring System May Allow Biopsy Diagnosis of Pulmonary Large Cell Neuroendocrine Carcinoma.

Baine MK, Sinard JH, Cai G, Homer RJ.

Am J Clin Pathol. 2019 Oct 8.

[Read More >>](#)

Physician Experience and Risk of Rituximab Discontinuation in Older Adults With Non-Hodgkin's Lymphoma.

Huntington SF, Hoag JR, Wang R, Zeidan AM, Giri S, Gore SD, Ma X, Gross CP, Davidoff AJ.

J Natl Compr Canc Netw. 2019 Oct 1;17(10):1194-1202.

[Read More >>](#)

Funding Opportunities

American Cancer Society Institutional Research Grant

This pilot funding opportunity is for Yale Assistant Professors to support innovative work in the broad fields of basic, translational, clinical and population prevention/control cancer research.

Application Deadline: November 11, 2019

[Learn More >>](#)

Bill & Melinda Gates Foundation Grand Challenges Exploration (Round 24)

The GCE initiative funds innovative ideas that could lead to new vaccines, diagnostics, drugs, and other technologies targeting diseases that claim millions of lives every year, as well as improvements and innovations in agriculture development and other priority areas of the Bill & Melinda Gates Foundation.

Application Deadline: November 13, 2019

[Learn More >>](#)

Melanoma Research Alliance Team Science Award

The MRA is pleased to announce a Special Opportunity for a Team Science Award (TSA) focused on In-transit Melanoma Research. This is an additional Special Opportunity above and beyond those already highlighted in first and second release of MRA's 2019/20 RFP.

Application Deadline: November 13, 2019

[Learn More >>](#)

Tolerance Discovered by Live Imaging

Valentina Greco, PhD

[Learn More >>](#)

2019/2020 Immunobiology Seminar Series October 31; 10:30 AM

The Anlyan Center
Auditorium, N-107

Molecular Programs Defining T-Cell Differentiation and Dysfunction in Tumors

Andrea Schietinger, PhD

[Learn More >>](#)

Pathology Grand Rounds

October 31; 12:30 PM

Fitkin Memorial Pavilion
Auditorium, LMP 1094

Proteome-Based Diagnostics: The Next Frontier in Precision Pathology

Michael Roehrl, MD, PhD

[Learn More >>](#)

Cancer Genetics and Prevention Program Journal Club

October 31; 2:30 PM

Orchard Medical Center, 107-109

Recent studies of cancer risk associated with pathogenic mutations on mismatch repair genes

Alex Petterson, MS, LCGC

[Learn More >>](#)

Yale Cancer Center Presents

November 1; 7:30 AM

West Campus Conference Center

Yale Esophageal Cancer Symposium 2019

Kimberly L. Johung, MD, PhD
| Stacey Stein, MD | Charles Fuchs, MD, MPH | Loren Laine, MD | Xavier Llor, MD,

Melanoma Research Alliance Awards 2019

*Pilot Award

*Young Investigator Award

*Astro-MRA Young Investigator Award in Radiation Oncology

*Dermatology Foundation and MRA Melanoma Detection/Preventative Mid-Career Award

These RFP's are soliciting high-impact pre-clinical, translational, and early clinical research from scientists and clinicians around the world. It calls for ideas that have the potential to lead to near-term clinical application in melanoma prevention, detection, diagnosis, staging, and treatment.

Application Deadline: November 18, 2019

[Learn More >>](#)

The Chan Zuckerberg Initiative Single-Cell Analysis of Inflammation

The Chan Zuckerberg Initiative invites applications for two-year collaborative pilot projects focused on the role of inflammation in maintaining health and triggering disease.

Application Deadline: November 19, 2019

[Learn More >>](#)

The Doris Duke Clinical Scientist Development Award

This award provides grants to junior physician scientists to facilitate their transition to independent clinical research careers.

Application Deadline: November 19, 2019

[Learn More >>](#)

Mobile Health: Technology and Outcomes in Low and Middle Income Countries (R21/R33)

The purpose of this FOA is to encourage exploratory/developmental research applications that propose to study the development, validation, feasibility, and effectiveness of innovative mobile health (mHealth) interventions or tools specifically suited for low- and middle-income countries that utilize new or emerging technology, platforms, systems, or analytics.

Application Deadline: November 19, 2019

[Learn More >>](#)

U.S.-Israel Binational Foundation BSF Research Grants

PhD | Harry Aslanian, MD | Thiruvengadam Muniraj, MD, MRCP | Nita Ahuja, MD, MBA | James Farrell, MBChB | Daniel Boffa, MD | Dhanpat Jain, MD | Joanna Gibson, MD, PhD | Jill Lacy, MD | Jeremy Kortmansky, MD | Andrew Dhanasopon, MD | Andrew Putnam, MD | Michael Cecchini, MD

[Learn More >>](#)

Hematology Research Seminar Series

November 1; 11:45 AM

Brady Memorial Library, Brady Auditorium

Innate and Adaptive Contributions to Tissue Damage and Regeneration Post-Transplant

Alan Hanash, MD, PhD

[Learn More >>](#)

Yale Cancer Answers

November 3; 7:30 PM

WNPR

MR Imaging for Prostate Cancer Detection

Jeffrey Weinreb, MD, FACR, FISMRM, FSCBT/MR

[Learn More >>](#)

Pathology Research in Progress Talk

November 5; 9:30 AM

The Anlyan Center Auditorium, N-107

Irina Krykbaeva and Anna Arnal Estape, PhD

[Learn More >>](#)

Genetics Clinical Grand Rounds

November 5, 10:15 AM

Sterling Hall of Medicine, SHM I-304

Monkol Lek, PhD

[Learn More >>](#)

The U.S.-Israel Binational Science Foundation (BSF) promotes scientific relations between the U.S. and Israel by supporting collaborative research projects in a wide range of basic and applied scientific fields, for peaceful and non-profit purposes.

Application Deadline: November 20, 2019

[Learn More >>](#)

2019 Class of '61 Cancer Research Award

This annual Award recognizes significant accomplishment in cancer research at Yale University by a young member of the faculty, coupled with the expectation for future outstanding contributions to our understanding of the causes of cancer and to the development of novel cancer treatments.

Application Deadline: November 22, 2019

[Learn More >>](#)

Damon Runyon Cancer Research Foundation Physician-Scientist Training Award

The Damon Runyon Physician-Scientist Training Award is designed to encourage more physicians to pursue research careers.

Application Deadline: December 2, 2019

[Learn More >>](#)

Breast Cancer Alliance Breast Surgery Fellowship Grant

The mission of the BCA is to improve survival rates and quality of life for those impacted by breast cancer through better prevention, early detection, treatment and cure. To promote these goals, we invest in innovative research, breast surgery fellowships, regional education, dignified support and screening for the underserved.

Application Deadline: December 10, 2019

[Learn More >>](#)

Cancer Intervention and Surveillance Modeling Network (CISNET) (U01)

This FOA invites multiple PD/PI applications for collaborative research projects using simulation and other modeling techniques for specific cancer types.

Application Deadline: December 10, 2019

[Learn More >>](#)

Alex's Lemonade Stand (Childhood Cancer) Young

Yale Cancer Center Grand Rounds

November 5; 12:00 PM

55 Park Street, Park Street Auditorium

Donna Spiegelman, ScD and Andrew Xiao, PhD

[Learn More >>](#)

Cell Biology Seminar Series

November 5; 1:00 PM

Sterling Hall of Medicine, SHM C-428

Gregg Gundersen, PhD

[Learn More >>](#)

Yale Cancer Center Seminar

November 5; 1:00 PM

Sterling Hall of Medicine, SHM I-304

Understanding Leukemic and Immune Cell Factors shaping GVL

Pavan Bachireddy, MD

[Learn More >>](#)

CBDS Seminar Series

November 6; 4:00 PM

The Anlyan Center Auditorium, N-203

Evaluating Cancer Drivers with HotMAPS

Rachel Karchin, PhD

[Learn More >>](#)

Advances in Men's Health - Updates in Urology CME Dinner

November 6; 5:00 PM

Artisan Restaurant at the Delamar Hotel, Southport

Stanton Honig, MD | Preston Sprenkle, MD | Michael S. Leapman, MD | David G. Hesse, MD | Thomas V. Martin, MD | Daniel S. Kellner, MD | Jamie A. Cavallo, MD, MPHS

Investigator Award

This grant is designed to support scientists during their fellowship training or early in their research careers. Demonstration of outstanding mentorship and demonstration of a career plan that shows commitment to pediatric cancer investigation are critical components of a successful application.

Application Deadline: December 16, 2019

[Learn More >>](#)

Alex's Lemonade Stand (Childhood Cancer) Epidemiology Grant

Epidemiology awards will support investigators pursuing research studies in human populations using epidemiological approaches, in order to significantly contribute to the understanding of childhood cancers.

Application Deadline: December 16, 2019

[Learn More >>](#)

Informatics Technology for Cancer Research Education Center (UE5)

The overarching goal of this NCI UE5 program is to support educational activities that complement and/or enhance the training of a workforce to meet the nation's biomedical, behavioral and clinical research needs.

Application Deadline: December 19, 2019

[Learn More >>](#)

[Learn More >>](#)

Smilow Rocks the '60s

November 7; 10:00 AM

Smilow Cancer Hospital at Yale New Haven - Healing Garden, 7th Floor

[Learn More >>](#)

Pathology Grand Rounds

November 7; 12:30 PM

Fitkin Memorial Pavilion Auditorium, LMP 1094

Regulation of Cardiac Gene Expression and Function by miRNAs

Da Zhi Wang, PhD

[Learn More >>](#)

Yale Stem Cell Center 11th Annual Retreat (Day 1)

November 7; 1:30 PM

West Campus Conference Center

Marcus Bosenberg, MD, PhD | Grace Chen, PhD | Rong Fan, PhD | Valentina Greco, PhD | Marc Hammarlund, PhD | Lilian Kabeche, PhD | Haifan Lin, PhD | In-Hyun Park, PhD | Valerie Reinke, PhD | Lauren Sansing, MD, MS, FAHA, FANA | Nenad Sestan, MD, PhD | Kaelyn Sumigray, PhD | Josien van Wolfswinkel, PhD, MSc

[Learn More >>](#)

Cancer Genetics and Prevention Program Seminar

November 7; 2:30 PM

Orchard Medical Center, 107-109

[Learn More >>](#)

Lung Cancer CME Dinner

November 7; 5:00 PM

Artisan Restaurant at the Delamar Hotel, Southport

*Screening our Patients and
Targeted Treatment Options*

Frank Detterbeck, MD, FACS,
FCCP | Isabel Cortopassi, MD
| Christopher Winterbottom,
MD | Vincent Mase, Jr., MD |
Polly Sather | Kulothungan
Gunasekaran, MD

[Learn More >>](#)

Submissions

Please submit your recent
publication and grant
announcements to:

Renee Gaudette

Director, Public Affairs and
Com