

August 25, 2017

## Announcements

Join us at Closer to Free



The 7th Annual Closer to Free Ride is just over 2 weeks away on September 9! We are expecting a record turnout this year, but there is still time for you to get involved in the Ride...

- Ride! Choose from 10, 25, 62.5, or 100 miles to support patient care and research at Smilow Cancer Hospital and Yale Cancer Center. 100% of the money you raise supports the amazing work here!
- Volunteer! We need help for short volunteer shifts at the Yale Bowl and full day positions along the ride route.
- Cheer! Line up along the Smilow driveway at 7:00 am for the Smilow Salute and cheer on the cyclists. Please encourage your staff, patients, and visitors to join you! Our alumni riders have reported the Smilow Salute as the BEST part of the Ride.
- Join us at the Yale Bowl! Cheer on our riders through the finish line. Enjoy the finish line festival with our riders and their

from the desk of  
**Charles S. Fuchs, MD, MPH**  
Director, Yale Cancer Center  
and Physician-in-Chief  
Smilow Cancer Hospital

Yale  
NewHaven  
**Health**  
Smilow Cancer  
Hospital

Yale **CANCER CENTER**  
A Comprehensive Cancer Center Designated  
by the National Cancer Institute

### Recent News

[News Center >>](#)

### LATEST ARTICLES:

families with live music, kids activities, a food truck village, the CTF store, and more!

- Tune in! Encourage the entire Smilow community to tune in live to Channel 75 on hospital TVs to watch the opening ceremonies and the Smilow Salute the morning of September 9.

Please find a way to be a part of the Closer to Free day.

I look forward to seeing you on Saturday, September 9. It will be a great day! For more information, visit [Closer to Free](#) or email [Jessica Scheps](#).

### **Mandar Muzumdar, MD Joins Cancer Biology Institute**

I am pleased to announce the appointment of Dr. Mandar Muzumdar as an Assistant Professor in the Yale Cancer Biology Institute (Genetics). Dr. Muzumdar graduated from Harvard University and received his Medical Degree from Stanford University. He completed his internship and residency at Brigham and Women's Hospital and a fellowship in medical oncology at Dana-Farber Cancer Institute.



Dr. Muzumdar's research interests led him to study under the mentorship of Dr. Tyler Jacks and focus on the genetic and environmental factors that contribute to the growth and development of pancreatic cancer. Leveraging a combination of sophisticated genetically-engineered cell and animal models, his lab has discovered mechanisms engaged by pancreatic cancer cells to evade inhibition of their hallmark genetic driver KRAS, elucidated the role of the gene p53 in constraining pancreatic cancer development, and generated tools to identify new drug targets in KRAS mutant



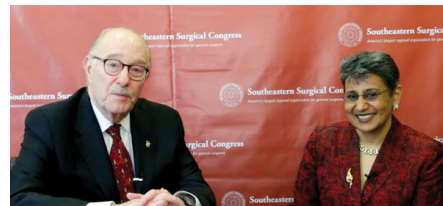
**Using unproven methods to tackle cancer could be deadly**

[Read More >>](#)



**Cancer Conundrum: Too Many Drug Trials, Too Few Patients**

[Read More >>](#)



**Expert Gives Update on Key Issues in Breast Cancer**

[Read More >>](#)



cells and to understand how obesity promotes pancreatic cancer. Through this work, Dr. Muzumdar will continue his research at Yale's Cancer Biology Institute to identify novel approaches for both the prevention and treatment of pancreatic cancer.

### Community Physician Education

The leadership of the Yale Cancer Center and Smilow Cancer Hospital is currently evaluating our CME plans for 2018. We aim to revise our relationships and to develop a comprehensive plan that will better meet the goals of our educational mission. While we undertake this review, we have put a hold on planning any new cancer-related CME or physician education events. In the next 2 months, we will announce a new strategy to highlight our clinical programs, which will include a series of events for physician education and outreach into the community. Please contact [Renee Gaudette](#) if you have any questions or suggestions in the interim.

### AstraZeneca Alliance



We are proud to announce that Yale and AstraZeneca (AZ) have embarked on a new collaboration, supported by AZ's Oncology Global Medical Affairs group, that aims to speed translational and clinical research to develop lifesaving, next-generation therapies for lung and other cancers.

Working closely with their colleagues from AstraZeneca, Roy Herbst, MD, PhD, and Pat LoRusso, DO, will serve as Yale Co-Chairs of the Committee providing strategic oversight of the collaboration, which will draw on Yale's strong translational program and the resources of YCC and Smilow, with a focus in lung cancer. To begin the collaboration, Yale Cancer Center hosted a Clinical Immersion Course in medical oncology last week, chaired by Dr. Sarah Goldberg, for the AstraZeneca Oncology medical sciences liaison team.

**Cancer is way more likely to kill you if you rely on 'natural' therapies**

[Read More >>](#)



**Old Saybrook Man To Ride in Survivor Jersey At Closer to Free**

[Read More >>](#)



**Choosing alternative cancer therapy doubles risk of death, study says**

[Read More >>](#)



**New Ronald McDonald House Opens at Yale New Haven Children's Hospital**

[Read More >>](#)

As the collaboration matures, the goal is to enable studies aimed at acquiring a deeper understanding of underlying mechanisms of tumor growth, such as disruptions in DNA repair pathways and the role of immune microenvironment, which predispose cells to cancer and also promote its growth.

## Notables

The leadership of Yale Cancer Center is proud to announce **Joseph Contessa, MD**, as the recipient of the **Class of '61 Cancer Research Award**. Dr. Contessa is an Associate Professor of Therapeutic Radiology. A physician-scientist, Dr. Contessa has made major contributions to the development of novel agents to inhibit the activity of receptor tyrosine kinases such as the EGF receptor, the use of genetic profiling to guide radiotherapy for brain metastases, and the development of novel approaches to image tumors. Four extraordinarily strong letters of support were provided for his nomination. Congratulations, Dr. Contessa!

### Melanie Glenn, RN

a nurse at the Smilow Care Center in Derby has been honored with a **DAISY Award**. Her colleague, Susan Hanrahan, nominated Mel for her excellent care, connection with her patients, helpful resource for her colleagues, and her collaboration with the hematology team on our main campus. Congratulations, Mel!



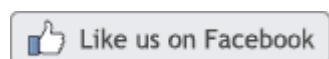
## Development Update



### Researchers ID Genes in Mice That Cause Aggressive Brain Cancer

[Read More>>](#)

## Join Yale Cancer Center on Facebook



### LATEST POSTS:

Smilow Cancer Hospital added the first Gamma Knife Icon device in New England to our radiation oncology program earlier this month.

At Smilow, the Icon is used for patients who have brain lesions that can't be treated in a single day of treatment and need their treatment to be divided into 3 to 5 fractions. For these patients completion of treatment after consults is typically 2-3 weeks whereas with the Icon, the treatment time is now decreased to 1-2 weeks with even less radiation exposure to normal brain tissue. Yale is one of the few centers in the world with multiple radiosurgery platforms, providing the flexibility and expertise to use any technology in the treatment planning for our patients - maximizing the benefits for our patients.

### New Gamma Knife Icon at Smilow offers our patients ultra precision.





Congratulations to Dr. Bruce McGibbon, Ryan Turian, Andrea Couto, Ginny Bowolick, Bridget Tartaro, Josephine Ettore, and Fatima Santos - Missing from picture, Vanessa Nazario and Jessica Mills.

A patient made a significant donation in the name of Trumbull Radiation Oncology after receiving exceptional care at the Park Avenue Medical Center. Bill Jennings, CEO of Bridgeport Hospital and Stephen Jakab, President of the Bridgeport Hospital Foundation, visited the Trumbull radiation oncology team last week to personally congratulate them.

## Research in the News

### A tumor-suppressing gene can be harmful in some cancers

The TET2 tumor suppressor gene helps guard against blood cancers and perhaps protects against heart disease. Mutations in the gene affect about 1% of people over the age of 65, making them more susceptible to those diseases. But a new Yale-led study suggests there is a surprising flip side to the story: Knocking out the gene appears to help combat solid tumors.

TET2 suppresses the anti-tumor ability of the immune system, explained senior author Jun Lu, associate professor of genetics at the Yale Stem Cell Center and Yale Cancer Center. In mouse models of cancer, eliminating the gene frees the immune system to attack solid tumor cells and reduce their size.

[Read More >>](#)

[Read More >>](#)

Help us welcome Dr. Lohith Gowda to our team! Dr. Gowda has joined us as an Assistant Professor of Hematology and has extensive experience in stem cell transplantation for patients with hematology malignancies. His training experience includes work at Albert Einstein College of Medicine, New York Presbyterian-Cornell, the New York Blood Center, and MD Anderson Cancer Center. Welcome, Dr. Gowda!



**Welcome, Dr. Lohith Gowda!**

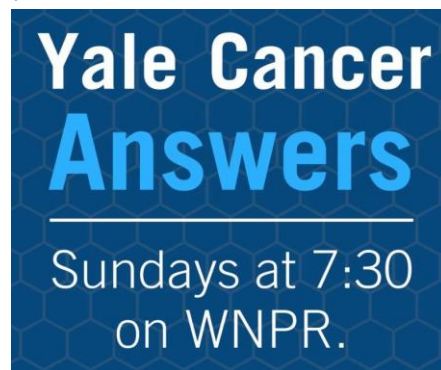
**Dr. Gowda will focus on the care of our patients in need of stem cell transplantation.**

YaleNewHavenHealth  
Smilow Cancer Hospital

[Read](#)

[More >>](#)

Tune in to WNPR at 7:30 for the latest episode of Yale Cancer Answers with Dr. Jonathan Leventhal discussing skin health. On our weekly podcast, we feature guests experts from different Yale Cancer Center programs to answer questions submitted by listeners like you!



[Read](#)

[More >>](#)

Congratulations to Hyun S. "Kevin" Kim, MD, Professor of Radiology and Medical Oncology and member of our Developmental Therapeutics Research Program here at Yale Cancer Center on receiving a Department of Defense Peer Reviewed Cancer Research Program Award. Dr.

## From thousands of suspects, Yale researchers ferret out cancer-causing genes

A Yale-led team of researchers has identified specific gene combinations that can cause the deadly brain cancer glioblastoma, using new technology that can also pinpoint triggers of other types cancers.

Sidi Chen, a member of the Yale Cancer Center, and colleagues developed an improved application of CRISPR gene editing and screening technology to search for primary drivers of glioblastoma in living mice. They assessed the impact of mutations in more than 1500 genetic combinations and found multiple combinations that could cause the cancer. They also found two mutations that could make tumors resistant to chemotherapy - information that could help doctors tailor existing treatments for individual patients, said the researchers.

The new technology could also provide researchers with ways to find specific targets for new drugs, Chen said.

[Read More >>](#)

## Employee Profile: Terri Vega

Teresita (Terri) Vega, BA, CTR, Manager of the Smilow Cancer Hospital and Greenwich Hospital Tumor Registry, started at Yale in 2000, but has been in the cancer registry field for 22 years. She and her team are responsible for the capture and collection of patient data from the moment of diagnosis until the patient passes away, either from their cancer or natural causes. Terri makes sure that each patient's data is properly documented and meets national standards, with the goal of providing quality data to researchers to enable them to find better care options for patients.



Kim, whose research focuses on immunotherapy, will use the award to fund a project to improve immunotherapy, in order to boost cells' natural responses against cancer.



[Read](#)

[More >>](#)

We are pleased to announce this year's Lung SPQRE Career Development Awards. This program exists to develop the next generation of translational lung cancer researchers by supporting scientists who are either in the early stages of their career, or by enhancing the careers of seasoned researchers with a new interest in the field of lung cancer research.



[Read More >>](#)

Pancreatic cancer, with the highest mortality rate of all major cancers, has long presented a challenge to the cancer community. A new study from Yale Cancer Center, however, has identified a crucial gene involved in the growth and development of pancreatic cancer, paving the way for new

Tracking demographics, diagnosis, staging, and treatment information for every patient creates a wealth of data for researchers and can provide insight into cancer incidence rates, treatments being given (radiation vs. chemo vs immunotherapy) and referral rates. Physician volume can also be tracked and analyzed to support the need for new equipment, etc. As a Commission on Cancer (CoC)-accredited facility, researchers at Yale Cancer Center have access to the National Cancer Database (NCDB) which tracks more than 70 percent of newly diagnosed cancer cases nationwide.

"I have watched cancer move from a disease with a low life expectancy, to a chronic illness that we are rapidly collecting more and more data for," said Terri. "I take pride in being able to arm our researchers with quality data that they can use in the fight against cancer and to advance care for patients. Our work may be done in the background, but the data that we collect reflects the amazing work being done in the field."

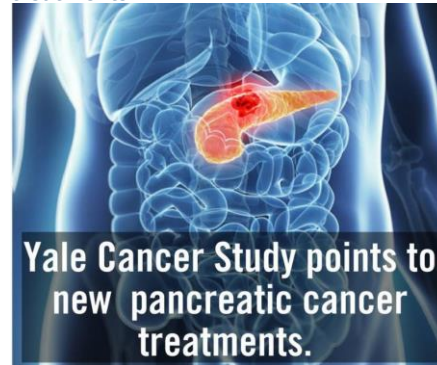
Terri and her team also support the submission of the YCC Cancer Center Support Grant by providing patient care data as needed. Dr. David Fischer commented, "Terri Vega has transformed the Yale Tumor Registry to one of excellence. In recent years, the number of cancer patients in the registry has more than doubled. She also acts as a consultant for other registries in the state. Terri is an over-achiever who works hard, is a good manager, and takes care of her staff. It is both an inspiration and a pleasure to work with her."

Art Lemay, Executive Director SCH Network, added, "I have worked with Terri throughout her tenure here and marvel at her skills in keeping our Registry on the cutting-edge. Her leadership in recruiting, training, and developing registrars has met the challenge of keeping up with the extraordinary growth in clinical volume. She leads a great team."

## Funding Opportunities

**Department of Defense Breast Cancer Research Program Funding Opportunities for 2017: Breakthrough Award**

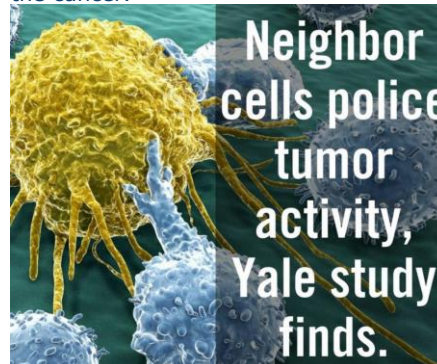
treatments.



[Read More >>](#)

The majority of cancer research is focused on the activity of cancerous cells, and until recently there was little understanding of what neighboring cells were doing during tumor genesis and growth.

An investigation led by Yale graduate students Samara Brown and Cristiana Pineda used mice to study both skin cancer cells and the cells in the surrounding tissue using new live-imaging technology. The study found that neighboring cells actively corrected tissue damage caused by the cancer.



[Read More >>](#)

---

**Follow Yale Cancer Center on Twitter**

Follow us on [twitter](#)

**LATEST TWEETS:**

### **Deadlines for Full Applications:**

**Level 3 & 4 Due:** August 31, 2017

#### **Innovator Award**

**Deadline for Application:** August 31, 2017

#### **Distinguished Investigator Award**

**Deadline for Application:** August 31, 2017

[Learn More >>](#)

#### **Elsa U. Pardee Foundation Request for Proposals**

The Pardee Foundation provides support to investigators in U.S. nonprofit institutions proposing research aimed at identifying new treatments or cures for cancer.

**Application Deadline:** August 31, 2017

[Learn More >>](#)

#### **NIH Director's Pioneer Award Program (DP1)**

The DPA complements NIH's traditional, investigator-initiated grant programs by supporting individual scientists of exceptional creativity.

**Application Deadline:** September 1, 2017

[Learn More >>](#)

#### **Leukemia & Lymphoma Society's (LLS) Career Development Program (CDP)**

LLS offers career development awards to postdoctoral fellows as well as early career, independent investigators. This year the application will be completed in 3 phases.

##### **Deadlines:**

**Eligibility:** September 1st

**Abstract:** September 15th

**Full Application:** October 3rd

[Learn More >>](#)

#### **SU2C Dream Team Translational Cancer Research Grant**

Two new #cancer support groups @SaintFrancisCT for patients and caregivers starting in Sept! To register, call 860-714-4731.

Dr. Skyler Johnson talked to CNN about using alt therapies vs conventional cancer treatments.

Don't miss @sitcancer Advances in #Cancer#Immunotherapy on 9/16 with @YaleCancer docs and nurses. Register now! <http://bit.ly/2tDTjaP>

Dr. Hochster (@HH\_Oncodr) of @YaleCancer discusses sun safety <http://bit.ly/2ivO0V3> on @WNPR (in time for #Eclipse)

[From thousands of suspects, Yale researchers ferret out cancer-causing genes in glioblastoma](#) #btsm .@ctbta

@AneesChagpar interview at the 2017 Southeastern Surgical Congress talking about key issues in breast cancer.

Yale scientists ID gene that suppresses anti-tumor ability of #immune system: knocking it out helps to fight #tumors

A reminder why everyone .@YaleCancer works each day to be #closterto free .@CTFRide

Relying on herbs, diets, crystals, etc., to treat #cancer doubles risk of death: @YaleCancer study.

Join @YaleCancer docs @OncLive's State of the Science Summit: GI Cancers, 9/19 at Yale's West Campus! Register today <http://ow.ly/dfIx308iTis>

Somewhat simplified but we must now move beyond more single agent PD1 trials (from many pharmas) to promising combos, available @YaleCancer

Dr. Hochster (@HH\_Oncodr) of @YaleCancer discusses #cancer treatment & the heart <http://bit.ly/2ivO0V3> on @WNPR



SU2C is inviting proposals for a new \$10 million Dream Team of top scientific investigators searching for new strategies to prevent or treat cancer. The new \$10 million grant is open to any type of translational cancer research.

**Letter of Intent Due:** September 5, 2017

[Learn More >>](#)

### **Gilead Sciences Research Scholars Program in Hematology/Oncology**

The Gilead Sciences Research Scholars Programs provide financial support to junior faculty researchers for a 2-year period.

**Application deadline:** September 8, 2017

[Learn More>>](#)

### **Department of Defense**

#### **Lung Cancer Research Program Funding Opportunities for 2017:**

#### **Career Development Award**

**Letter of Intent Due:** September 13, 2017

[Learn More >>](#)

### **The Pancreatic Cancer Detection Consortium (U01)**


This FOA invites applications from multi-disciplinary teams of researchers and clinicians to establish the Pancreatic Cancer Detection Consortium (PCDC) to conduct research to improve the detection of early stage pancreatic ductal adenocarcinoma (PDAC) and characterization of its precursor lesions.


**Application Deadline:** September 21, 2017

[Learn More >>](#)

### **Alex's Lemonade Stand Foundation Nurse Researcher Grants**

ALSF's Nurse Researcher Grants program is dedicated to improving the quality of life for young cancer patients and their families by supporting studies to discover better ways to care for children undergoing treatment.

 Bottom line: alternative medicine instead of standard of care is (sometimes literally) snake oil!

 Yale Cancer Center talks to the New York Times about clinical trials:

---

## **Closer to Free**

# **closer to free**

The fund to advance cancer research and enhance patient care

---

## **Calendar of Events**

**August 25; 9AM**

### **CT Tennis Open/Smilow Day**

Connecticut Tennis Center at Yale

*Smilow Screening and Prevention Informational Table*

[Read More >>](#)

**August 27; 12PM**

### **Smilow Screening & Prevention Informational Table**

Goffe Street Park

*Unity in the Community Health Fair Date*

[Read More >>](#)

**August 27; 7:30PM**

### **Yale Cancer Answers**

WPNR

*Oncology Nursing Best Practice*

Ruth McCorkle, PhD and Dena Schulman-Green, PhD

[Read More >>](#)

**September 3; 7:30PM**

### **Yale Cancer Answers**

WPNR

*DNA Repair and Cancer*

Nurse Researcher Fellowship

**Application deadline:** September 25, 2017

[Learn More>>](#)

### **NIH Discovery of Small Molecule Immunomodulators for Cancer Therapy Grant (R01)**

The purpose of this FOA is to promote the discovery of novel small molecules that may enhance the ability of the immune system to selectively recognize and attack cancer cells.

**Application Deadline:** October 5, 2017

[Learn More>>](#)

### **Melanoma Research Alliance**

The MRA is pleased to announce RFP's for high-impact pre-clinical, translational, and early clinical research that has the potential to lead to near-term clinical application in melanoma prevention, detection, diagnosis, staging, and treatment.

**Application Deadline:** October 6, 2017 (Team Science Award); November 17, 2017 (Young Investigator Award and Academic-Industry Partnership Award)

[Learn More >>](#)

### **YCCI Multidisciplinary Post-Doctoral Training Program RFA**

We are pleased to announce the YCCI Multidisciplinary Post-Doctoral Training Program in Translational Research RFA, which will provide support to a select number of postdoctoral trainees who are strongly committed to careers in translational research.

**Deadline for Application:** October 13, 2017, 5:00pm

**Submit Application here:** <http://ycci.yale.edu/>

---

## **Recent Publications**

**Hepatic intra-arterial injection of irinotecan drug eluting beads (DEBIRI) for patients with**

Ryan Jensen, PhD

[Read More >>](#)

### **September 5; 12PM**

#### **Yale Cancer Center Grand Rounds**

Park Street Auditorium

*New Molecular Targets for Melanoma Brain Metastasis*

Lucia Jilaveanu, MD, PhD

*Evaluation of the Implementation and Effectiveness of a Program to Increase HPV Vaccine Uptake: Inpatient Postpartum HPV Immunization*

Sangini Sheth, MD, MPH

[Read More >>](#)

### **September 7; 2:30PM**

#### **ICSNM Program Lecture**

BML 131

*Systemic Contributions of the Adipocyte in Diabetes, Obesity and Cancer*

Philip E. Scherer, PhD

[Read More >>](#)

---

## **Submissions**

Please submit your recent publication and grant announcements to:

**Renee Gaudette**

Director, Public Affairs and Marketing

[renee.gaudette@yale.edu](mailto:renee.gaudette@yale.edu)

 [Forward to a Friend](#)

**unresectable colorectal liver metastases:  
A systematic review.**

Akinwande O, Dendy M, Ludwig JM, Kim HS.  
Surg Oncol. 2017 Sep;26(3):268-275.

[Read More >>](#)

**The Yale Fitness Intervention Trial in female  
cancer survivors: Cardiovascular and  
physiological outcomes.**

Knobf MT, Jeon S, Smith B, Harris L, Thompson S,  
Stacy MR, Insogna K, Sinusas AJ.  
Heart Lung. 2017 Aug 10.

[Read More >>](#)

**Feasibility and Acceptability of Qigong Exercise  
in Community-Dwelling Older Adults in the  
United States.**

Chang PS, Knobf MT, Funk M, Oh B.  
J Altern Complement Med. 2017 Jul 14.

[Read More >>](#)

**Physical and psychological effects of Qigong  
exercise in community-dwelling older adults: An  
exploratory study.**

Chang PS, Knobf MT, Oh B, Funk M.  
Geriatr Nurs. 2017 Aug 16.

[Read More >>](#)

**SAMHD1 Promotes DNA End Resection to  
Facilitate DNA Repair by Homologous  
Recombination.**

Daddacha W, Koyen AE, Bastien AJ, Head PE,  
Dhere VR, Nabeta GN, Connolly EC, Werner E,  
Madden MZ, Daly MB, Minten EV, Whelan DR,  
Schlafstein AJ, Zhang H, Anand R, Doronio C,  
Withers AE, Shepard C, Sundaram RK, Deng X,  
Dynam WS, Wang Y, Bindra RS, Cejka P,  
Rothenberg E, Doetsch PW, Kim B, Yu DS.  
Cell Rep. 2017 Aug 22;20(8):1921-1935.

[Read More >>](#)

**Can Mentoring and Collaboration Lead to a  
Charge of Plagiarism?**

McCorkle R.  
Cancer Nurs. 2017 Sep/Oct;40(5):428-429.

[Read More >>](#)

**Carcinoma of the Urethra.**

Zhang M, Adeniran AJ, Vikram R, Tamboli P, Pettaway C, Bondaruk J, Liu J, Baggerly K, Czerniak B.

Hum Pathol. 2017 Aug 18.

[Read More >>](#)

**Work-Related Injuries of Radiologists and Possible Ergonomic Solutions: Recommendations From the ACR Commission on Human Resources.**

Sze G, Bluth EI, Bender CE, Parikh JR.

J Am Coll Radiol. 2017 Aug 12.

[Read More >>](#)

**CURRENT CONCEPTS IN 68Ga-DOTATATE NEN IMAGING: INTERPRETATION, BIODISTRIBUTION, DOSIMETRY AND MOLECULAR STRATEGIES.**

Bodei L, Ambrosini V, Herrmann K, Modlin I.

J Nucl Med. 2017 Aug 17.

[Read More >>](#)

**A Clinical Decision Support System for Monitoring Post-Colonoscopy Patient Follow-Up and Scheduling.**

Wadia R, Shifman M, Levin FL, Marengo L, Brandt CA, Cheung KH, Taddei T, Krauthammer M.

AMIA Jt Summits Transl Sci Proc. 2017 Jul 26;2017:295-301.

[Read More >>](#)

**Assisted clustering of gene expression data using ANCut.**

Teran Hidalgo SJ, Wu M, Ma S.

BMC Genomics. 2017 Aug 16;18(1):623.

[Read More >>](#)

**Laparoscopic colectomy reduces complications and hospital length of stay in colon cancer patients with liver disease and ascites.**

Pei KY, Asuzu DT, Davis KA.

Surg Endosc. 2017 Aug 15.

[Read More >>](#)

**De novo mutations in inhibitors of Wnt, BMP, and Ras/ERK signaling pathways in non-syndromic midline craniosynostosis.**

Timberlake AT, Furey CG, Choi J, Nelson-Williams C; Yale Center for Genome Analysis, Loring E, Galm A, Kahle KT, Steinbacher DM, Larysz D, Persing JA, Lifton RP.

Proc Natl Acad Sci U S A. 2017 Aug 14.

[Read More >>](#)

**Two transmembrane dimers of the bovine papillomavirus E5 oncoprotein clamp the PDGF  $\beta$  receptor in an active dimeric conformation.**

Karabadzak AG, Petti LM, Barrera FN, Edwards APB, Moya-Rodríguez A, Polikanov YS, Freitas JA, Tobias DJ, Engelman DM, DiMaio D.

Proc Natl Acad Sci U S A. 2017 Aug 14.

[Read More >>](#)

**Overcoming barriers to treating iron overload in patients with lower-risk myelodysplastic syndrome.**

Zeidan AM, Pullarkat VA, Komrokji RS.

Crit Rev Oncol Hematol. 2017 Sep;117:57-66.

[Read More >>](#)

**Society for Immunotherapy of Cancer consensus statement on immunotherapy for the treatment of bladder carcinoma.**

Kamat AM, Bellmunt J, Galsky MD, Konety BR, Lamm DL, Langham D, Lee CT, Milowsky MI, O'Donnell MA, O'Donnell PH, Petrylak DP, Sharma P, Skinner EC, Sonpavde G, Taylor JA 3rd, Abraham P, Rosenberg JE.

J Immunother Cancer.

[Read More >>](#)