

August 21, 2020

Announcements

Daniel DiMaio, MD, PhD, receives NCI Outstanding Investigator Award

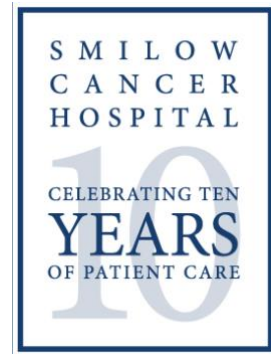
I am honored to announce that the NCI has named Daniel DiMaio, MD, PhD a recipient of its Outstanding Investigator



Award. Dr. DiMaio will receive more than \$7 million in cancer research funding over seven years from this award to support our efforts to advance understanding of the unique mechanisms that mediate infection by human papillomavirus (HPV), which causes 5% of all human cancer. Dr. DiMaio's research has made a significant impact on the field of HPV, as well as tumor virology and prevention and treatment of HPV-associated cancers and this award recognizes his outstanding contributions, and his leadership of his laboratory team, and will enable him to extend his important work in this field.

[Learn More >>](#)

from the desk of
Charles S. Fuchs, MD, MPH
Director, Yale Cancer Center and Physician-in-Chief
Smilow Cancer Hospital



Yale
NewHaven
Health
Smilow Cancer
Hospital

Yale **CANCER CENTER**
A Comprehensive Cancer Center Designated
by the National Cancer Institute

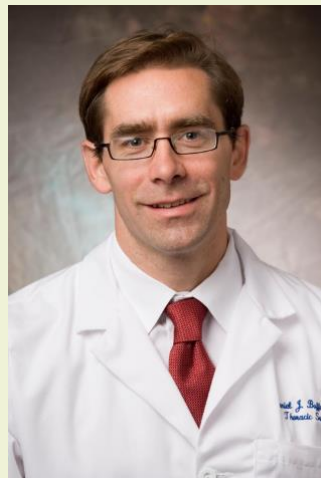
**Harold Tara,
Jr., MD
Appointed
Smilow
Bridgeport
Service Line
Director**

Dr. Harold Tara, Jr. has been appointed as the Smilow Bridgeport Service Line Director. In this position, he will serve as the medical leader for the Smilow Cancer Hospital Service Line at Bridgeport Hospital and will advise on clinical program strategy, planning and implementation, and sustain a premier clinical service characterized by Smilow patient-centered care.

Dr. Tara will partner with Lisa Shomsky, Smilow Bridgeport Administrative Service Line Director, to recommend and implement new programs, determine growth projections and resource needs, and marketing recommendations. We are grateful to Dr. Mary Pronovost for her years of dedicated service leading the Service Line and the Bridgeport and Trumbull Breast Program for Smilow Cancer Hospital.

**Daniel J. Boffa,
MD, Named
Division Chief
of Thoracic
Surgery**

The Department of Surgery has announced Dr. Daniel Boffa as the new Division Chief for the Division of Thoracic Surgery, effective September 1st. In his new role, Dr. Boffa will be responsible for managing the clinical, research and financial growth of thoracic



News Center

With Cheer, Couple Leads 'Team B' in Closer to Free Ride



[Watch Now >>](#)

Supporting Veterans one Step at a Time



[Read More >>](#)

Supporting Closer to Free and our Patients



[Read More >>](#)

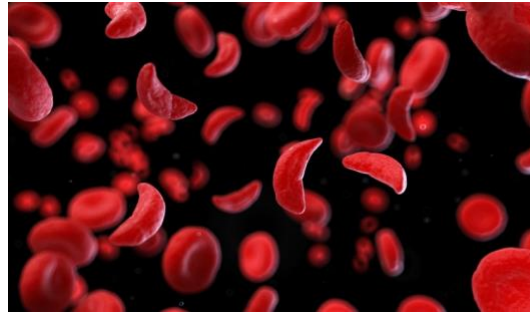
Yale Cancer Center Study Shows Medical Marijuana Associated with Fewer Hospitalizations for Adults with Sickle Cell Disease

surgery services across the health system, in addition to the mentorship of next generation surgical leaders. He succeeds Dr. Frank Detterbeck, who has led the Division of Thoracic Surgery since 2005.

Catherine Wei, MD, has been appointed an **Instructor of Clinical Medicine**



(Hematology) and cares for patients in need of hematologic treatment and care. Dr. Wei received her Medical Degree from the Albert Einstein College of Medicine and completed her residency and fellowship at Rutgers University Robert Wood Johnson with a fellow elective in Bone Marrow Transplantation and Cellular Therapies at Memorial Sloan Kettering Cancer Center. During her fellowship training, Dr. Wei received the Melvyn H. Motolinsky Hematology Research Foundation Award, established to support research into leukemia and other blood-related diseases. She also received the very competitive Gallo Award for Outstanding Cancer Research in 2015 from the Cancer Institute of New Jersey. Dr. Wei's current research is focused on Burkitt Lymphoma, as well as improved use of bronchoscopy and pathological analysis for bone marrow transplant patients.



[Read More >>](#)

Smilow Cancer Hospital Nurses Join Closer To Free Ride



[Read More >>](#)

Targeted Treatments Help Reduce Death Rates for Most Common Lung Cancer, Study Finds



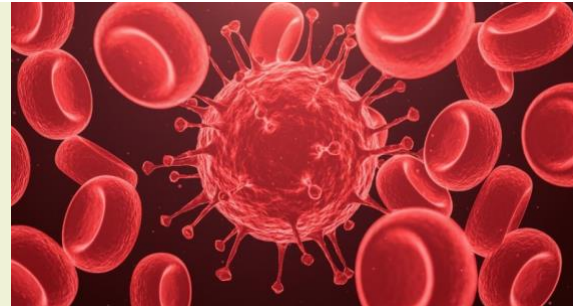
[Read More >>](#)

Scientists Find Source of Covid-19 Clots

Kathleen Fenn, MD, has joined Smilow Cancer Hospital as an **Instructor of Clinical Medicine (Medical**



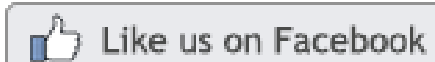
Oncology) following the completion of her Hematology/Oncology Fellowship at Columbia University Irving Medical Center. Dr. Fenn received her Medical Degree from Yale School of Medicine, and completed her internship and residency at Columbia University Irving Medical Center. She is a member of the T32 Cancer Biology Training Program (T32-CA009503) and recently presented at the San Antonio Breast Cancer Symposium on the tumor immune microenvironment in early stage HR-positive/HER2-positive breast cancer.



[Read More >>](#)



Join Smilow Cancer Hospital on Facebook



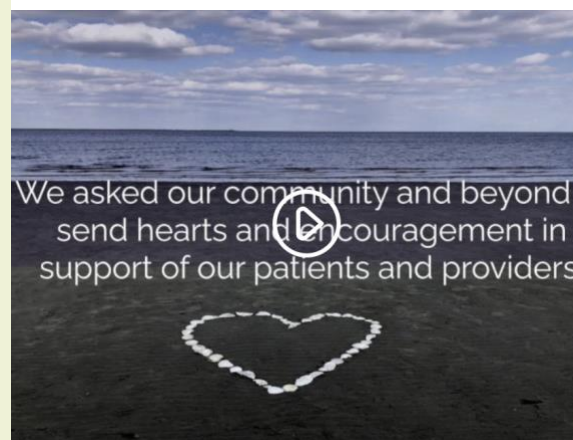
At the beginning of the COVID pandemic, we asked the Smilow community and beyond to share photos of hearts and encouragement in support of our patients and providers. Your support has been overwhelming, and today we share many of them in this video compilation created by our Integrative Medicine Program.

Notables

Jeffrey Ishizuka, MD, DPhil, Assistant Professor of Medicine (Medical Oncology), was awarded a **Distinguished Young Investigator Award** in the Clinical Scientist Category from the **Immuno-Oncology Young Investigators' Forum** to support his research "Targeting dsRNA Editing Tumors to Overcome Resistance to Immune Checkpoint Blockade."

John Kunstman, MD, MHS, Assistant Professor of Surgery (Oncology), has received the New England Surgical Society Scholars Foundation Board Scholars Research Grant for his proposal "Development of an Organoid-based Model System for Intraductal Papillary Mucinous Neoplasia of the Pancreas."

Amy C. Justice, MD, PhD, CNH Long Professor of Medicine (General Medicine), Professor of Public Health (Health Policy), and Co-Leader of



[Watch Now >>](#)

Dr. James Farrell, Professor of Medicine and Director of the Yale Center for Pancreatic

the Cancer Microbiology Research Program at Yale Cancer Center has been chosen to participate in the **COVID-19 Insights Partnership**, a joint initiative between the U.S. Department of Veterans Affairs (VA), along with the Departments of Energy (DOE) and Health and Human Services (HHS).

The **Radiobiology and Radiotherapy Research Program** is proud to welcome **David Stitelman, MD**, and **Lilian Kabeche, PhD**, to its Program. Dr. Stitelman is an Assistant Professor of Surgery (Pediatrics). As a pediatric surgeon at Yale New Haven Children's Hospital, he cares for children with cancer. Dr. Stitelman also runs a translational laboratory investigating gene-editing, which has potential applications for cancer research.

Dr. Kabeche is an Assistant Professor of Molecular Biophysics and Biochemistry. Her work focuses on investigating the mechanisms that activate and promote DNA damage repair proteins to ensure proper chromosome segregation. Moreover, Dr. Kabeche's research is also delving into how we can leverage chromosome instability as a therapeutic target specifically using ATR inhibitors to selectively kill chromosome unstable cancer cells. Dr. Kabeche's research experience has been dedicated to further understanding mitosis as a highly complex biological process, and how errors in mitosis can lead to cancer initiation and development. She hopes to continue her work in cancer biology and use these new data to develop better therapeutic strategies to target cancer cells in various stages of the cell cycle.

Employee Profile: Joy Burns, PA, MMSc

Diseases, was a recent guest on the [#ProjectPurple](#) podcast where he discussed his focus on the early detection of pancreatic cancer. Project Purple is a Connecticut-based, non-profit organization dedicated to raising awareness, supporting families, and funding research efforts to defeat pancreatic cancer. Dr. Farrell's interview can be found [here](#)



[Watch Now >>](#)

Shantana Maye-Hazel recently joined us on Yale Cancer Answers today on Connecticut Public Radio for a discussion on "Building a Relationship with your Physician from a Patient's Perspective." Tune in to our podcast!



[Read More >>](#)

Dr. Daniel Petrylak, Professor of Medicine (Medical Oncology) and of Urology, explains the challenges to treating advanced urothelial

When Joy Burns isn't busy working as a PA in the Benign Hematology Program at Smilow Cancer Hospital, she has many hobbies and pursuits in the community that keep her occupied. Recently, she was asked to join the Amistad



Committee, a group founded in 1988 to commemorate the 150th Anniversary of the Amistad Revolt. She is also conducting important research for The Witness Project, which installs markers for enslaved individuals at a site of significance, such as where they lived, worked, or prayed. Joy is also a co-leader of Elm Community Insight, an engaged mindfulness community and has been meditating since 1996. In addition, she recently joined the White Coats 4 Black Lives chapter at Yale.

In her role as a Physician's Assistant, Joy works collaboratively with members of the Hematology Program at Smilow, including Drs. Alfred Lee, Robert Bona, Natalia Neparidze, Noffar Bar, and Martin Katz, as well as the nursing staff, to care for patients with benign hematologic disorders. Joy explained that this field is often misunderstood, and considered to be "non-deadly" but many of the diseases she treats can cause serious morbidity, including cancer, and even death. Her patients span the age range of 18-105 and include an array of disorders from anemia to hereditary conditions. She closely follows her patients, especially those with a condition called paroxysmal nocturnal hemoglobinuria who become pregnant, as it poses increased maternal and fetal morbidity and mortality.

"To be able to follow these patients and build a relationship with them, and then see them deliver healthy babies is why I do what I do," said Joy. "These women require highly

(bladder) cancer, and how you need to do the best you can right now.



[Watch Now >>](#)

Congratulations to Marianne Davies, DNP, ACNP, AOCNP! Marianne has been named a Fellow of The American Academy of Nursing. 230 nurse leaders from across the nation have been selected to join the prestigious 2020 Fellow Class, which will be recognized during the Academy's annual conference in October.



[Read More >>](#)

Another serene moment shared by our Integrative Medicine Program: Stillness in the Bay. Take a few minutes from your day to take in this breathtaking scene.

specialized care and I feel so lucky to be a part of the team that provides that.”

Joy was influenced early on in her career by the AIDS epidemic, and was working with patients at the Cornell Scott-Hill Health Center in New Haven in 1995 when an antiretroviral therapy (ART) was introduced. Joy commented, “I see people out and about today that I was able to treat with this therapy back in the 90s and they are living full lives; it is truly amazing. My interest in healthcare drove me to attend PA school and I could not be happier with that decision.”

Recent Publications

Schoots, I. G., Barentsz, J. O., Bittencourt, L. K., Haider, M. A., Macura, K. J., Margolis, D., Moore, C. M., Oto, A., Panebianco, V., Siddiqui, M. M., Tempany, C., Turkbey, B., Villeirs, G. M., Weinreb, J. C., & Padhani, A. R. (2020).

PI-RADS Committee Position on MRI Without Contrast Medium in Biopsy Naive Men with Suspected Prostate Cancer: A Narrative Review.

AJR. American journal of roentgenology, 10.2214/AJR.20.24268. Advance online publication.

[Read More >>](#)

Jacobs, D., Breen, C. T., Pucar, D., Holt, E., Judson, B. L., & Mehra, S. (2020).

Changes in Population-Level and Institutional-Level Prescribing Habits of Radioiodine Therapy for Papillary Thyroid Cancer.

Thyroid : official journal of the American Thyroid Association, 10.1089/thy.2020.0237. Advance online publication.

[Read More >>](#)

Hu, J., Li, T., Wang, S., & Zhang, H. (2020).

Supervariants identification for breast cancer.

Genetic epidemiology, 10.1002/gepi.22350. Advance online publication.

[Read More >>](#)



[Watch Now >>](#)

Sarah Infantino, RN, MS, Patient Services Manager, Marcelle Gosteli, RN, MSN, Assistant Patient Services Manager, and Evanica Rosselli, RN, MSN, Nursing Professional Development Specialist, have been a strong force in ensuring our Smilow Cancer Hospital providers, nurses, and staff have received the support they need while transitioning their cancer care from Smilow to the Saint Raphael Campus over the last five months. Today, their team continues to remain at SRC while everyone else has transitioned back to Smilow and their positive motivation truly makes a difference. Thank you, Sarah, Marcelle, and Evanica, for your leadership and dedication to Smilow. You are Shining #SmilowStars!

Smilow Stars

Thank you,
Evanica Rosselli, RN, MSN, Ashley Torres, Sarah Infantino, RN, MS, and Marcelle Gosteli, RN, MSN, part of the Women's Oncology Unit at Smilow Cancer Hospital!

YaleNewHavenHealth
Smilow Cancer Hospital

Yale CANCER CENTER
A Comprehensive Cancer Center Designated by the National Cancer Institute

[Read More >>](#)

Take a few moments to meet Kevin G. Billingsley, MD, MBA, Chief Medical Officer at Smilow Cancer Hospital and Yale Cancer Center, and Professor of Surgery. Dr. Billingsley focuses his clinical care on the surgical treatment of patients with gastrointestinal cancers, specifically metastatic cancer to the liver.

Jairam, V., Yang, D. X., Verma, V., Yu, J. B., & Park, H. S. (2020).

National Patterns in Prescription Opioid Use and Misuse Among Cancer Survivors in the United States.

JAMA network open, 3(8), e2013605.

[Read More >>](#)

Miccio, J. A., Barsky, A., Gao, S., Verma, V., Noticewala, S. S., Jairam, V., Johnson, S. B., Yu, J. B., Hansen, J. E., Aneja, S., An, Y., Decker, R. H., Bulent Omay, S., Li, J., Kurtz, G. A., Alonso-Basanta, M., Lee, J., Chiang, V. L., & Park, H. S. (2020).

Multi-institutional retrospective review of stereotactic radiosurgery for brain metastasis in patients with small cell lung cancer without prior brain-directed radiotherapy.

Journal of radiosurgery and SBRT, 7(1), 19–27.

[Read More >>](#)

Dominello, M. M., Sanders, T., Anscher, M., Bayouth, J., Brock, K. K., Carlson, D. J., Hugo, G., Joseph, S., Knisely, J., Mendonca, M. S., Mian, O. Y., Moros, E. G., Singh, A. K., & Yu, J. B. (2020).

Responses to the 2018 and 2019 'One Big Discovery' Question: ASTRO membership's opinions on the most important research question facing radiation oncology...where are we headed?.

International journal of radiation oncology, biology, physics, S0360-3016(20)34122-5. Advance online publication.

[Read More >>](#)

Koch, C. D., Xu, L., Curtis, S. A., Roberts, J. D., Bunch, D. R., & El-Khoury, J. M. (2020).

Urinary Cannabinoid Mass Spectrometry Profiles Differentiate Dronabinol from Cannabis Use.

Clinica chimica acta; international journal of clinical chemistry, S0009-8981(20)30396-X. Advance online publication.

[Read More >>](#)

Yang, A., Cross, C. N., & Townsend, J. P. (2020).

Non-Coding Mutations in Urothelial Bladder Cancer: Biological and Clinical Relevance and Potential Utility as Biomarkers.



meet the
physician

[Read More >>](#)

Follow Yale Cancer Center on Twitter

Follow us on **twitter**



Our new work out in @JAMANetworkOpen characterizing rates of prescription opioid use and misuse in cancer survivors and non-cancer respondents.



"I looked for a Fellowship program that had a strong clinical training component and research opportunities and @YaleHemOnc had the perfect mix!" — Julia Foldi, 3rd year medical oncology-hematology fellow



Join Shantana Maye-Hazel for a discussion on Yale Cancer Answers today at 7:30pm @wnpr to discuss "Building a Relationship with your Physician from a Patient's Perspective."

Bladder cancer (Amsterdam, Netherlands), 6(2), 211–213.

[Read More >>](#)

Curtis, S. A., Lew, D., Spodick, J., Hendrickson, J. E., Minniti, C. P., & Roberts, J. D. (2020).

Medical marijuana certification for patients with sickle cell disease: a report of a single center experience.

Blood advances, 4(16), 3814–3821.

[Read More >>](#)

Robinson, M. H., Vasquez, J., Kaushal, A., MacDonald, T. J., Velázquez Vega, J. E., Schniederjan, M., & Dhodapkar, K. (2020).

Subtype and grade-dependent spatial heterogeneity of T-cell infiltration in pediatric glioma.

Journal for immunotherapy of cancer, 8(2), e001066.

[Read More >>](#)

Jairam, V., Yang, D. X., Pasha, S., Soulos, P. R., Gross, C. P., Yu, J. B., & Park, H. S. (2020).

Temporal Trends in Opioid Prescribing Patterns Among Oncologists in the Medicare Population.

Journal of the National Cancer Institute, djaa110. Advance online publication.

[Read More >>](#)

Funding Opportunities

COVID Gap Funding

The purpose of this RFP for COVID supplemental funding is to provide a mechanism of funding support for research-focused faculty whose work was delayed due to COVID-19.

[Read More >>](#)

Lasker Clinical Research Scholars Program (Si2/R00)

This FOA encourages applications for the Lasker Clinical Research Scholars Program for the purpose of supporting the research activities



A new study led by @DrSusieC2 in @BloodAdvances shows adults with #sicklecell disease prescribed #medicalmarijuana to treat pain require fewer visits to the hospital.



Congratulations to @MarcusBosenberg's lab graduate student @MK_Mcg5 on receiving a F99/K00 Predoctoral to Postdoctoral Award from the @NIH@theNCI to fund 2 years of laboratory and 4 years of postdoc cancer research.



Congratulations to Dr. Ranjith Menon Muraleedharan, awarded a @CureSearch @sebsstrong \$225,000 Young Investigator Grant to help develop a new treatment approach for #DIPG. @RanjitBindra



Congratulations @PJAnanthMD, recipient of a @StBaldricks scholar award to fund research on end-of-life care for children with #cancer #palliativecare.

Calendar

Phone Meditation hosted by Smilow Integrative Medicine

August 21; 1:00 PM

[Learn More >>](#)

Yale Cancer Answers

August 23; 7:30 PM

NPR

Bereavement During COVID and Cancer

Andrea Lucibello, LCSW

[Learn More >>](#)

Guided Imagery Meditation with Michele Grand LMT hosted by Smilow Integrative Medicine

August 24; 10:30 AM

[Learn More >>](#)

Virtual T'ai Chi/Qigong hosted by Smilow Integrative Medicine

August 24; 3:00 PM

[Learn More >>](#)

during the early stage careers of independent clinical researchers.

Application Deadline: August 28, 2020

[Read More >>](#)

Community Interventions to Address the Consequences of the COVID-19 Pandemic among Health Disparity and Vulnerable Populations (R01)

This FOA encourages applications to implement and evaluate community interventions testing 1) the impacts of mitigation strategies to prevent COVID-19 transmission in NIH-designated health disparity populations and other vulnerable groups; and 2) already implemented, new, or adapted interventions to address the adverse psychosocial, behavioral, and socioeconomic consequences of the pandemic on the health of these groups.

Application Deadline: August 28, 2020

[Read More >>](#)

NCCN Pfizer Biosimilars RFP Opportunity

The intent of this RFP is to encourage organizations in the United States to submit initial LOIs describing concepts that develop and validate enduring approaches to improve the safe, effective and efficient adoption of biosimilars in oncology.

Application Deadline: September 9, 2020

[Read More >>](#)

American Cancer Society and Pfizer Global Medical Grants Addressing Racial Disparities in Cancer Care

This is a competitive grant opportunity focused on addressing systematic race-related barriers that contribute to disparities in outcomes among Black men and women with cancer.

Application Deadline: September 10, 2020

[Read More >>](#)

Emergency Awards: Automatic Detection and Tracing of SARS-CoV-2 (U01)

The NIH is issuing this FOA in response to the declared public health emergency issued by the Secretary, Department of Health and Human Services (DHHS), for 2019 Novel Coronavirus

Basic Self-Massage Tips with Michele Grand, LMT

August 25; 11:00 AM

[Learn More >>](#)

Phone Meditation hosted by Smilow Integrative Medicine

August 25; 12:30 PM

[Learn More >>](#)

Zumba Gold hosted by Smilow Integrative Medicine

August 25; 1:00 PM

[Learn More >>](#)

Restorative Yoga with Ellen McNally hosted by Smilow Integrative Medicine

August 25; 3:00 PM

[Learn More >>](#)

Virtual T'ai Chi/Qigong hosted by Smilow Integrative Medicine

August 26; 2:00 PM

[Learn More >>](#)

Phone Meditation hosted by Phil Levine, Mindfulness Meditation Coach

August 26; 4:00 PM

[Learn More >>](#)

Slide Seminar

August 27; 8:30 AM

Liver Mesenchymal Tumors: Practical Approach

Zu-hua Gao, MD, PhD

[Learn More >>](#)

Virtual Gentle Yoga hosted by Smilow Integrative Medicine

August 27; 10:00 AM

[Learn More >>](#)

NCI and Cancer Research UK Present: Cancer Grand Challenges

August 27; 10:30 AM

Norman Sharpless, MD | Michelle Mitchell OBE

| Sir Paul Nurse | Dinah S. Singer, PhD | Iain

Foulkes, PhD

[Learn More >>](#)

Pathology Grand Rounds

August 27; 12:30 PM

Chairing an Academic Pathology Department: Challenges and Opportunities

Zu-hua Gao, MD, PhD

[Learn More >>](#)

Guided Imagery Meditation with Michele Grand LMT hosted by Smilow Integrative Medicine

(COVID-19). This RFA will support the early stage development of an innovative platform that integrates biosensing with touchscreen or other digital devices to achieve detection and tracing of SARS-CoV-2 in real-time.

Application Deadline: September 15, 2020

[Read More >>](#)

Emergency Awards: Exosome-based Non-traditional Technologies Towards Multi-Parametric and Integrated Approaches for SARS-CoV-2 (U18) The NIH is issuing this FOA in response to the declared public health emergency issued by the Secretary, Department of Health and Human Services (DHHS), for the 2019 Novel Coronavirus (COVID-19). This FOA seeks to use developed technologies for single vesicle or exosome isolation and analysis and reposition these technologies for the detection of SARS-CoV-2.

Application Deadline: September 18, 2020

[Read More >>](#)

CRI Irvington Postdoctoral Fellowship Program.

This program furthers career development and supports laboratory research for promising young scientists working under the mentorship of leading immunologists.

Application Deadline: October 1, 2020

[Read More >>](#)

Promoting Research on Music and Health: Phased Innovation Award for Music Interventions (R61/R33 Clinical Trial Optional)

The purpose of this FOA is to promote innovative research on music and health with an emphasis on developing music interventions aimed at understanding their mechanisms of action and clinical applications for the treatment of many diseases, disorders, and conditions.

Application Deadline: October 2, 2020

[Read More >>](#)

Assay development and screening for discovery of chemical probes, drugs or immunomodulators (R01)

August 27; 1:30 PM

[Learn More >>](#)

Phone Meditation hosted by Smilow Integrative Medicine

August 28; 1:00 PM

[Learn More >>](#)

Yale Cancer Answers

August 30; 7:30 PM

NPR

Neuropsychology and Brain

Franklin Brown, PhD, ABPP

[Learn More >>](#)

Guided Imagery Meditation with Michele Grand LMT hosted by Smilow Integrative Medicine

August 31; 10:30 AM

[Learn More >>](#)

Virtual T'ai Chi/Qigong hosted by Smilow Integrative Medicine

August 31; 3:00 PM

[Learn More >>](#)

Phone Meditation hosted by Smilow Integrative Medicine

September 1; 12:30 PM

[Learn More >>](#)

Zumba Gold hosted by Smilow Integrative Medicine

September 1; 1:00 PM

[Learn More >>](#)

Restorative Yoga with Ellen McNally hosted by Smilow Integrative Medicine

September 1; 3:00 PM

[Learn More >>](#)

Virtual T'ai Chi/Qigong hosted by Smilow Integrative Medicine

September 2; 2:00 PM

[Learn More >>](#)

Phone Meditation hosted by Phil Levine, Mindfulness Meditation Coach

September 2; 4:00 PM

[Learn More >>](#)

Therapeutic Radiology Grand Rounds

September 3; 9:00 AM

Management of Retroperitoneal Sarcoma - Is

There a Role for Radiation

Elizabeth H. Baldini, MD, MPH, FASTRO

[Learn More >>](#)

Through this FOA, NCI wishes to stimulate research in discovery and development of novel, small molecules for their potential use in studying disease treatment relevant to the missions of the participating NIH Institutes.

Application Deadline: October 5, 2020

[Read More >>](#)

Secondary Analysis and Integration of Existing Data to Elucidate the Genetic Architecture of Cancer Risk and Related Outcomes (R01 and R21)

Through these FOAs, the NCI along with the NHGRI and NIDCR encourages submission of applications proposing to conduct secondary data analysis and integration of existing datasets and database resources, with the ultimate aim to elucidate the genetic architecture of cancer risk and related outcomes.

Application Deadlines: October 5, 2020 (R01) and October 16, 2020

[Read More >>](#)

AACR-AstraZeneca Stimulating Therapeutic Advances through Research Training (START) Grants

These unique three-year grants of \$225,000 provide postdoctoral or clinical fellows with the opportunity to conduct research in both academia and industry. Proposals should focus on DNA Damage Response or epigenetics in cancer. Selected fellows will spend one year at an AstraZeneca facility.

Application Deadline: October 6

[Read More >>](#)

Aging, Cancer-Initiating Cells, and Cancer Development (U01)

Through this FOA, the NCI and National Institute on Aging will promote research to advance the understanding of the mechanistic factors and cellular interactions during aging that contribute to cancer initiation.

Application Deadline: October 27, 2020

[Read More >>](#)

Fertility Status as a Marker for Overall Health (R01 and R21)

Submissions

Please submit your recent publication and grant announcements to:

[Renee Gaudette](#)

Director, Public Affairs and Communications

The purpose of this FOA is to support research that explores the premise that fertility status can be a marker for overall health.

Application Deadline: October 19, 2020

[Read More >>](#)

Innovative Research in Cancer Nanotechnology (IRCN) (R01 Clinical Trial Not Allowed)

This FOA encourages applications promoting transformative discoveries in cancer biology and/or oncology through the use of nanotechnology.

Application Deadline: November 4, 2020

[Read More >>](#)

NCI Outstanding Investigator Award (R35)

The objective of the NCI OIA is to provide long-term support to accomplished investigators with outstanding records of cancer research productivity who propose to conduct exceptional research.

Application Deadline: November 6, 2020

[Read More >>](#)

3D Technologies to Accelerate HTAN Atlas Building Efforts (UH2)

Through this FOA, the NCI, as a part of its Beau Biden Cancer Moonshot Initiative, invites submission of applications requesting support for projects that will accelerate cancer research.

Application Deadline: November 9, 2020

[Read More >>](#)

Core Infrastructure Support for Cancer Epidemiology Cohorts (U01 Clinical Trial Not Allowed)

Through this FOA, the NCI encourages grant applications for support of the core functions of Cancer Epidemiology Cohorts (CECs), as well as methodological research. This FOA is intended to support the maintenance of existing CECs infrastructure and resource sharing with broader scientific communities.

Application Deadline: November 12, 2020

[Read More >>](#)

DoD Rare Cancers Research Program

These FOAs aim to greatly improve outcomes for people with rare cancer through discovery and community building, and expansion of knowledge across the cancer landscape.

- **Concept Award – Letter of Intent**
Due: November 12, 2020
- **Idea Development Award – Letter of Intent**
Due: November 12, 2020
- **Resource and Community Development Award – Letter of Intent**
Due: November 12, 2020

[Read More >>](#)

Limited Competition: Childhood Cancer Survivor Study (U24 Clinical Trial Required)

The purpose of this limited competition FOA is to continue support for the Childhood Cancer Survivor Study as a resource enabling broad studies on the long-term effects of cancer and its associated therapies on survivors of pediatric and adolescent cancers.

Application Deadline: November 18, 2020

[Read More >>](#)

Alex's Lemonade Stand RUNX1 Early Career Investigator Grant

The RUNX1 Early Career Investigator grant is a 3-year award designed to fund research in strategies leading to the development of therapies to prevent the transition from pre-leukemia to leukemia for patients with RUNX1-FPD.

Application Deadline: December 16, 2020

[Read More >>](#)