

March 5, 2021

Announcements

Chênevert Family Brain Tumor Center Launched at Yale

We are proud to announce a gift to establish the Chênevert Family Brain Tumor Center at Yale Cancer Center. The Chênevert Family Brain Tumor Center will be a leading center in Neuro-Oncology research worldwide, bringing ground-breaking solutions and hope to patients with brain tumors. The Center's vision is to promote discoveries and advance meaningful scientific innovations that set new standards for the diagnosis, treatment, and care for patients with brain tumors.



"As a survivor of Stage 4 CNS Lymphoma, our family is thankful for the great care provided by doctors and staff at Yale during my battle. I am fortunate that now I can give back personally and through our Foundation to change the outcome and cure for others affected by brain cancer," Louis Chênevert said. Mr. Chênevert serves as Chairman of the Yale Cancer Center Director's Advisory Board.

Elizabeth Herbert Hired as Vice President for Network Services

Please welcome Elizabeth Herbert, Vice President for Network Services, to Smilow Cancer Hospital and Yale Cancer Center. Liz joined us earlier this week from Memorial Sloan Kettering (MSK) Cancer Center where she most recently served as a Senior Vice President in Hospital Administration. In this role, she had administrative oversight of six academic departments at MSK and served as an executive sponsor to numerous improvement projects. Throughout her notable career at MSK, Liz served in leadership and management positions within hospital administration, human resources, compliance and internal audit, professional billing, radiation oncology, and

from the desk of

Nita Ahuja, MD, MBA, FACS

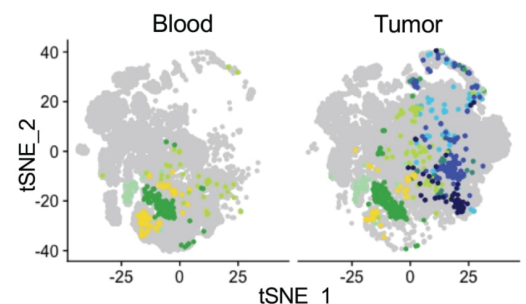
Interim Director, Yale Cancer Center
Interim Physician-in-Chief,
Smilow Cancer Hospital

Yale
NewHaven
Health
Smilow Cancer
Hospital

Yale CANCER CENTER
A Comprehensive Cancer Center Designated
by the National Cancer Institute

News Center

Yale Researchers Identify Tumor Reactive Immune Cells to Help Fight Against Advanced Melanoma



[Read More](#)

Blood Tests Offer Early Indicator of Severe COVID-19, Study Says

gastroenterology.

We are confident that Liz's diverse executive oncology experience and proven success with improved clinical operations, patient experience, and practice management will benefit Smilow Cancer Hospital's continued growth in our region. As Vice President for Network Services, Liz will support our oncology specialty presence throughout the Yale New Haven Health System and Smilow Cancer Hospital Network and develop our strategy to meet the growing market demand for multidisciplinary cancer care. In addition, Liz will serve as the administrative lead for Smilow Cancer Hospital's Radiation Oncology services throughout the Yale New Haven Health System.

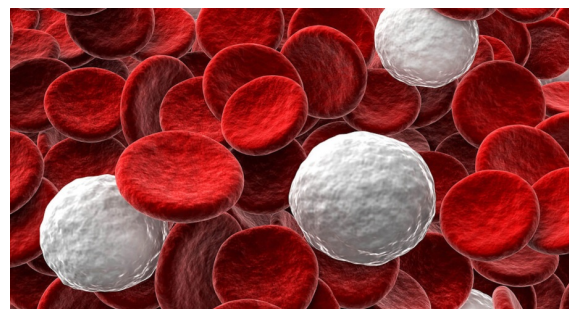
Center for Thoracic Cancers Launched

We are pleased to announce the launch of the Center for Thoracic Cancers, led by Roy S. Herbst, MD, PhD. This new Center will build off of the success of the Thoracic Oncology Program (TOP) to continue to achieve excellence in clinical practice, research innovation, and advancement of trainees in thoracic malignancies throughout the Smilow Cancer enterprise.

Dr. Herbst will be joined by a multispecialty Leadership Cabinet including Justin Blasberg (Thoracic Surgery), Daniel Boffa (Thoracic Surgery), Isabel Cortopassi (Radiology & Biomedical Imaging), Roy Decker (Therapeutic Radiology), Scott Gettinger (Medical Oncology), Sarah Goldberg (Medical Oncology), Robert Homer (Clinical Pathology), David Madoff (Radiology & Biomedical Imaging), Vincent Mase (Thoracic Surgery), Katie Politi (Pathology), Kurt Schalper (Pathology), and Lynn Tanoue (Pulmonary Medicine). Additionally, Dr. Daniel Boffa will serve as the Center's inaugural Clinical Director, Dr. Sarah Goldberg will serve as the Center's inaugural Research Director, Dr. Katie Politi will serve as the Center's inaugural Scientific Director. Dr. Scott Gettinger, Professor of Medicine (Medical Oncology) and formally the DART leader for TOP will become the Chief of Thoracic Medical Oncology. Each will lead efforts to drive innovation in their respective domains by engaging diverse, inclusive, multidisciplinary teams.

The Center for Thoracic Cancers will leverage our Yale SPORE in Lung Cancer, multiple RO1 grants, philanthropic support, and other collaborative clinical and research initiatives to advance important scientific, clinical, and outreach priorities in thoracic cancers uniquely relevant to our catchment area population, the residents of Connecticut. Our research innovations will flourish while we simultaneously ensure we are providing the very best in cancer care to our patients throughout the Smilow Cancer Hospital Network and each of the Yale New Haven Health delivery networks. Please reach out to Kevin Vest, MBA, Vice President for Disease Centers, with questions on the new model and plans moving forward for future multidisciplinary centers.

Please join the Center for Thoracic Cancers for a **Grand Rounds Panel Presentation** hosted by Dr. Herbst on Tuesday, March 9 at noon via **Zoom**. Dr. Herbst will host an interactive discussion regarding



[Read More](#)

Potential Therapy to Prevent, Treat Endometrial Cancer Recurrence



[Read More](#)

How COVID-19 is Transforming Smilow Cancer Hospital for the Future



[Read More](#)

Adapting to the Changing Liver Cancer Landscape



[Read More](#)

Mining Brain Metastasis for Answers



the future growth of thoracic oncology at all of our 15 Care Centers and the YNHHS delivery networks with the leaders of the new Center.

Team Challenge Awards Announced

Yale Cancer Center's Team Challenge Awards are an internal grant program focused on advancing the work of teams who seek to address a fundamental research priority that aligns with or has the potential to successfully extend our strategic priorities. Successful projects are expected to lead to the formation of sustainable, collaborative, and productive focus groups for the future submission of cancer-related, multidisciplinary, multi-investigator grants.

Congratulations to the following awardees:

Investigating Structural and Social Determinants of Health to Address Cancer Disparities and Promote Health Equity Research

Principal Investigator: Marcella Nunez-Smith

Project Leads: Cary Gross, Linda Niccolai, Nicole Deziel, Melinda Irwin, and Jessica Lewis

Biological Determinants of HIV-Associated Lung Cancer

Principal Investigators: Brinda Emu and Kurt Schalper

Project Leads: Kurt Schalper, Richard Flavell, Priti Kumar, and Brinda Emu

Studies of immune-related adverse events in cancer patients treated with immune checkpoint inhibitors

Principal Investigator: Harriet Kluger

Project Leads: Harriet Kluger, Lucia Jilaveanu, Aaron Ring, Sarah Goldberg, Kevan Herold, Mario Sznol, and Sarah Weiss

Development and characterization of novel transformative cell therapies to overcome therapeutic resistance in hematological cancers and solid tumors

Principal Investigator: Sidi Chen

Project Leads: Sidi Chen, Mario Sznol, Xiaolei Su, Markus Mischen, Sam Katz, and Sherman Weissman

Notables

Laura J. Morrison, MD, FAAHPM, Associate Professor of Medicine and Director of the Yale Hospice and Palliative Medicine Fellowship Program, has received the **2021 American Academy of Hospice and Palliative Medicine (AAHPM) Gerald H. Holman Distinguished Service Award** in recognition of her important contributions to the national Entrustable Professional Activities (EPAs) and Curricular Milestones Workgroup that created and published EPAs and Curricular Milestones for hospice and palliative medicine fellowship programs. Dr. Morrison led the formation of the Workgroup and chaired the EPA development portion. Dr. Morrison and the other workgroup members

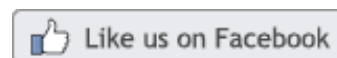
were honored in a video presentation at the AAHPM/Hospice and Palliative Nurses Association Annual Assembly, held February 17-19, 2021.



[Read More](#)



Join Smilow Cancer Hospital on Facebook



Today we recognize Kaneil Willocks, an EPIC Cadence Specialist who has been extremely helpful in making sure that our Smilow Rapid Evaluation Clinic (SREC) has run successfully since its launch last spring. As nursing and check-in staff have evolved for the SREC, urgent requests for several changes in EPIC access for teams have been expedited and quickly addressed by Kaneil, and his colleague, Ideola Edmead (profiled in April 2020). Thanks to their quick replies, the SREC continues to provide responsive care to a diverse population of patients from Smilow Cancer Hospital and our Care Centers. Kaneil, thank you for always being available to us and part of our Smilow team – you are a #SmilowStar!



[Read More](#)

Elena Ratner, MD, Leader of Smilow Cancer Hospital's Gynecologic Oncology Program, recently

Vish Muthusamy, PhD, Executive Director of the Center for Precision Cancer Modeling, has received a grant from **Cybrex Therapeutics** to support research on “Investigating the anti-tumor activity of CBX-12 in combination with checkpoint inhibitors in syngeneic mouse tumor models” and a second grant from **Enlivex Therapeutics** for “Investigating the anti-tumor activity of Allocetra in combination with checkpoint inhibitors in syngeneic mouse tumor models.”

Eric Song, a fifth-year Yale School of Medicine (YSM) MD-PhD student, under the mentorship of Akiko Iwasaki, PhD, is one of 13 recipients of the prestigious **2021 Harold M. Weintraub Graduate Student Award**, which recognizes outstanding achievement during graduate studies in the biological sciences. Eric was nominated for the award by Dr. Iwasaki, along with Carla Rothlin, PhD, and David Schatz, PhD. [Learn More](#)

Congratulations to Kristina Capretti, MSN, RN, Clinical Program Director for the Smilow Cancer Hospital Care Center in Greenwich, who has been honored as one of **Fairfield County’s “40 Under 40”** for her contributions as a leader at Greenwich Hospital. The award honors the county’s most influential young professionals who are making a difference professionally. Known as a “genuine and empathetic leader” dedicated to her patients and staff, Kristina is also a past recipient of the international DAISY Award for Extraordinary Nurses.

Elizabeth Prsic, MD, Director of Inpatient Palliative Care, **Hari Deshpande, MD**, Associate Professor of Medicine (Medical Oncology), **Tracy Carafeno, RN, MS, CNML**, Director of Nursing for Smilow Inpatient Care, and **Jenny Xiang, MD**, YNH Resident, have been accepted as a multidisciplinary team to **The ASCO Quality Training Program**. Together, the team will participate in the 6-month training program focused on improving quality of care for patients, with an emphasis on discharge transitions and post-hospital care. Congratulations to the entire team on this noteworthy achievement!

Employee Profile: Lyn Balsamo, PhD

Lyn Balsamo, PhD, is an Associate Research Scientist in Pediatrics (Hematology/Oncology) and a Licensed Psychologist for the Yale Pediatric Hematology and Oncology Program. Although her tasks vary day to day, patient to

patient, her ultimate goal never wavers: to see childhood cancer survivors grow and thrive.



spoke with radio host Lisa Wexler about the COVID-19 vaccine, fertility, and early cancer detection.

“So many women are passed around from provider to provider being told their symptoms are menopause and I am tired of seeing them six months later with stage 3 cancer. This is why I do so much education and awareness for women and providers. The time is now to pull together as women as get educated—not to walk away and accept being passed along when you know something is wrong.”

Thank you, Dr. Ratner for your tireless advocacy on behalf of our patients!



[Read More](#)

March is Colorectal Cancer Awareness Month. Please join us for Smilow Shares programs on March 18 and March 23 to learn more about screening, prevention, and treatment.

March is Colorectal Cancer Awareness Month

If you're 45-50 years old or have a family history of colorectal cancer, now's the time to think about getting screened for colorectal cancer, the 3rd most common cancer in the U.S. for men and women.

Find out more about how you can prevent colorectal cancer by requesting the Frequently Asked Questions (FAQ's) Fact Sheet from Smilow Screening & Prevention: [203-200-3030](tel:203-200-3030) or Screening@ynhh.org.



[Read More](#)

Greenwich Hospital recently presented its 2020 Breast Center Award to all Greenwich Hospital

As one of her many tasks, Lyn performs neuro-cognitive testing for children that have undergone treatments for cancer to assess for late effects and any services they may need moving forward with their education. By testing memory and learning ability, Lyn helps parents understand their child's strengths and weaknesses so they can be as



successful as possible in the future. Having been in this role for 12 years now, Lyn has seen patients grow from children to young adults. As they grow and change, so do their needs.

“The intersection between mental health and a medical diagnosis looks different for each individual and can depend on age, personal history, and family factors. For many, a cancer diagnosis profoundly changes the lives of children and their families. Sometimes they need assistance in coping with a new diagnosis and its effect on daily life, and later coping with what it means to be a survivor,” said Lyn. Often the issues Lyn manages range from trouble with toilet training, to more severe issues such as depression and anxiety.

Lyn commented that since the pandemic she has begun to see some children in person again but Zoom consults have allowed her to interact with patients she normally would never see due to travel barriers, and time constraints. She can now schedule a Zoom for after school, which has been helpful for older children. It is still evolving and depends on what works best for each individual patient.

Nina Kadan-Lottick, MD, MSPH, Associate Professor of Pediatrics (Hematology/Oncology) and Medical Director of the HEROS Clinic for survivors of childhood cancer, commented, “Dr. Balsamo is an amazing clinician who makes an incredible difference for children and teens affected by cancer. She helps them first cope, then thrive, and ultimately live life to their full potential.”

Recent Publications

Martin, K.
Through the Virtual Looking Glass
The Oncologist, 26(3), 261–262.

Read More

Polaski, J. T., Udy, D. B., Escobar-Hoyos, L. F., Askan, G., Leach, S. D., Ventura, A., Kannan, R., & Bradley, R. K. (2021).

The origins and consequences of *UPF1* variants in pancreatic

employees and families in honor of their valiant ongoing efforts during the global COVID-19 pandemic. The award is granted annual to a member of the community or hospital team in special recognition of a substantial contribution to the Breast Program at Greenwich Hospital and Smilow Cancer Hospital Care Center at Greenwich.



Read More

Dr. Patricia LoRusso, Associate Cancer Center Director for Experimental Therapeutics, recently discussed the many options phase I clinical trials give cancer patients, and the new treatments bringing hope to our patients at Smilow Cancer Hospital on Yale Cancer Answers.



Read More

On Tuesday, February 23, we celebrated our 10th anniversary on Facebook! Thank you for being part of our online community!



the origins and consequences of CD4+ T-helper-1-predominant

adenosquamous carcinoma.

eLife, 10, e62209.

[Read More](#)

Lucca LE, Axisa PP, Lu B, Harnett B, Jessel S, Zhang L, Raddassi K, Zhang L, Olino K, Clune J, Singer M, Kluger HM, Hafler DA (2021)

Circulating Clonally Expanded T Cells Reflect Functions of Tumor-Infiltrating T Cells

Journal of Experimental Medicine.

[Read More](#)

Du, L., Yau, C., Brown-Swigart, L., Gould, R., Krings, G., Hirst, G. L., Bedrosian, I., Layman, R. M., Carter, J. M., Klein, M., Venters, S., Sonal, S., van der Noordaa, M., Chien, A. J., Haddad, T., Isaacs, C., Pusztai, L., Albain, K., Nanda, R., Tripathy, D., ... Symmans, W. F. (2021).

Predicted sensitivity to endocrine therapy for stage II-III hormone receptor-positive and HER2-negative (HR+/HER2-) breast cancer prior to chemo-endocrine therapy.

Annals of oncology : official journal of the European Society for Medical Oncology, S0923-7534(21)00128-9. Advance online publication.

[Read More](#)

Park KU, Gregory M, Bazan J, Lustberg M, Rosenberg S, Blinder V, Sharma P, Pusztai L, Shen C, Partridge A, Thompson A (2021)

Neoadjuvant Endocrine Therapy Use in Early Stage Breast Cancer during the Covid-19 Pandemic

Breast Cancer Research and Treatment, Online ahead of print.

[Read More](#)

Meckstroth S, Wang R, Ma X, Podoltsev N (2021)

Patterns of Care for Older Patients With Myelofibrosis: A Population-based Study

Clinical Lymphoma, Myeloma and Leukemia, Online ahead of print.

[Read More](#)

Shallis RM, Zeidan AM, Wang R, Podoltsev NA

Epidemiology of the Philadelphia Chromosome-Negative Classical Myeloproliferative Neoplasms

Hematology/Oncology Clinics of North America.

[Read More](#)

Perdigoto AL, Kluger H, Herold KC (2021)

Adverse Events Induced By Immune Checkpoint Inhibitors

Current Opinion in Immunology, Online ahead of print.

[Read More](#)

Lenis AT, Fero KE, Ojeaburu L, Lec PM, Golla V, Brisbane W,

Leapman MS, Chamie K (2021)

The Role of Neoadjuvant Chemotherapy, Lymph Node Dissection, and Treatment Delay in Patients with Muscle-Invasive Bladder Cancer Undergoing Partial Cystectomy

Urologic Oncology: Seminars and Original Investigations, Online ahead of print



[Read More](#)

Listen to Smilow Cancer Hospital dietitian and board-certified specialist in oncology nutrition, Vanessa Salino, talk about foods that help prevent cancer and cancer recurrence in recognition of National Cancer Prevention Month.



[Watch Now](#)

When the National Cancer Act of 1971 became law, it launched a nationally coordinated approach to cancer research. This landmark legislation wasted no time in advancing clinical trials that led to revolutionary cancer treatments, immunotherapies, targeted therapies, and advanced tumor imaging. Over the last 50 years, Yale Cancer Center has contributed to these advancements, including the development of new drug therapies. Read about Maureen's success being treated for stage IV lung cancer with an anti-PD-1 therapy during the first clinical trial available.



[Read More](#)

Follow Yale Cancer Center on Twitter

Follow us on [twitter](#)

Read More

González IA, Mallinger P, Watson D, Harris AK, Messinger YH, Schultz KAP, Field A, Hill DA, Dehner LP (2021)

Expression of p53 is Significantly Associated with Recurrence-Free Survival and Overall Survival in Pleuropulmonary Blastoma (PPB): A Report from The International Pleuropulmonary Blastoma/DICER1 Registry

Modern Pathology, Online ahead of print.

Read More

Fucito LM, Ash GI, DeMartini KS, Pittman B, Barnett NP, Li CR, Redeker NS, O'Malley SS (2021)

A Multimodal Mobile Sleep Intervention for Young Adults Engaged in Risky Drinking: Protocol for a Randomized Controlled Trial

JMIR Research Protocols.

Read More

Kibel AS, Inman BA, Pachynski RK, Vu T, Sheikh NA, Petrylak DP (2021)

Videos of Sipuleucel-T Programmed T Cells Lysing Cells That Express Prostate Cancer Target Antigens

Journal of the National Cancer Institute, Online ahead of print.

Read More

Pathak R, Boffa DJ (2021)

Adjuvant Chemotherapy in Patients With Early-Stage Non-Small Cell Lung Cancer-Reply

JAMA Oncology, Online ahead of print.

Read More

Merritt MA, Strickler HD, Hutson AD, Einstein MH, Rohan TE, Xue X, Sherman ME, Brinton LA, Yu H, Miller DS, Ramirez NC, Lankes HA, Birrer MJ, Huang GS, Gunter MJ (2021)

Sex Hormone, Insulin and Insulin-like Growth Factor in Recurrence of High Stage Endometrial Cancer

Cancer Epidemiology, Biomarkers & Prevention, Online ahead of print.

Read More

Cadamuro M, Lasagni A, Lamarca A, Fouassier L, Guido M, Sarcognato S, Gringeri E, Cillo U, Strazzabosco M, Marin JJ, Banales JM, Fabris L (2021)

Targeted Therapies for Extrahepatic Cholangiocarcinoma: Preclinical and Clinical Development and Prospects for the Clinic

Expert Opinion on Investigational Drugs, Online ahead of print.

Read More

Du L, Yau C, Brown-Swigart L, Gould R, Krings G, Hirst GL, Bedrosian I, Layman RM, Carter JM, Klein M, Venters S, Sonal S, van der Noordaa M, Chien AJ, Haddad T, Isaacs C, Pusztai L, Albain K, Nanda R, Tripathy D, Liu MC, Boughey J, Schwab R, Hylton N, DeMichele A, Perlmutter J, Yee D, Berry D, Veer LV, Valero V, Esserman L, Symmans WF (2021)

Predicted Sensitivity to Endocrine Therapy for Stage II-III



"We have all the tools we need for cervical cancer elimination." — @YaleCancer Dr.

Linda Niccolai serving as a guest editor for a special issue of Preventative Medicine to help eliminate the deadly #cancer.



New research led by @DavidHaflerMD and Dr. Liliana Lucca in @JournalMedicine identifies tumor reactive #immune cells to help fight advanced #melanoma.



Join us today at Noon for a virtual @YaleCancer Grand Rounds/The Annual Blanche Tullman Lecture in #Hematology. @DrMvandenBrink discusses "The Role of the Intestinal Microbiome in Allogeneic Hematopoietic Cell Transplantation."



Dr. Patricia LoRusso will discuss the many options phase I #clinicaltrials give cancer patients & the new treatments bringing hope to our patients @SmilowCancer on Yale Cancer Answers. Tune in this evening at 7:30pm on @wnpr or download our podcast from iTunes.



"This is one of the first demonstrations showing biomarkers in the blood of #COVID19 patients can predict ICU admission before patients become critically ill." — Dr. Alfred Lee on research in @BloodAdvances.



Thanks to the generosity of the Chênevert Family, we're proud to announce the Chênevert Family Brain Tumor Center @YaleCancer.



Encouraging news in the fight against #endometrialcancer. Research out today led by @GloriaHuangMD shows a new treatment pathway to prevent and treat the disease.



Congratulations to Dr. Laura Morrison @lojomo22 for receiving the 2021 AAHPM Gerald H. Holman Distinguished Service Award in recognition for her work in #Hospice and #Palliative Medicine.



Join us at Noon today for @YaleCancer virtual Grand Rounds. Dr. Stephanie Halene @HaleneLab, Dr. Francine Foss, Dr. Thomas Prebet and Dr. Natalie Neparidze discuss "Translational Science in #Hematologic Malignancies."

**Reduced Sensitivity to Endocrine Therapy for Stage II-II
Hormone Receptor-Positive And HER2-Negative (HR+/HER2-)
Breast Cancer Prior to Chemo-Endocrine Therapy**

Annals of Oncology, Online ahead of print.

[Read More](#)

Tian J, Zhang D, Kurbatov V, Wang Q, Wang Y, Fang D, Wu L,
Bosenberg M, Muzumdar MD, Khan S, Lu Q, Yan Q, Lu J (2021)
**5-Fluorouracil Efficacy Requires Anti-Tumor Immunity Triggered
by Cancer-Cell-Intrinsic STING**

The EMBO Journal, Online ahead of print.

[Read More](#)

Vasiliou V, Veselkov K, Bruford E, Reichardt JKV (2021)
**Standardized Nomenclature and Open Science in Human
Genomics**

Human Genomics.

[Read More](#)

Mukherjee R, Vanaja KG, Boyer JA, Gadai S, Solomon H,
Chandarlapaty S, Levchenko A, Rosen N (2021)
**Regulation of PTEN Translation by PI3K Signaling Maintains
Pathway Homeostasis**

Molecular Cell.

[Read More](#)

Xie J, DiMaio D (2021)
**Traptamer Screening: a New Functional Genomics Approach to
Study Virus Entry and Other Cellular Processes**

The FEBS Journal, Online ahead of print.

[Read More](#)

Friedrich AU, Reisenbichler ES, Heller DR, LeBlanc JM, Park TS,
Killelea BK, Lannin DR (2021)
Characteristics and Long-Term Risk of Breast Angiosarcoma

Annals of Surgical Oncology, Online ahead of print.

[Read More](#)

Verma R, Branagan AR, Xu ML, Flavell RA, Dhodapkar KM,
Dhodapkar MV (2021)
**Role of MBD3-SOX2 Axis in Residual Myeloma following
Pomalidomide**

Leukemia, Online ahead of print.

[Read More](#)

Datar IJ, Hauc S, Desai SS, Gianino N, Henick BS, Liu Y, Syrigos KN,
Rimm DL, Kavathas P, Ferrone S, Schalper KA (2021)
**Spatial Analysis and Clinical Significance of HLA Class-I and
Class-II Subunit Expression in Non-Small Cell Lung Cancer**

Clinical Cancer Research, Online ahead of print.

[Read More](#)

Johnston PB, Cashen AF, Nikolinakos PG, Beaven AW, Barta SK,
Bhat G, Hasal SJ, De Vos S, Oki Y, Deng C, Foss FM (2021)
**Belinostat in Combination with Standard Cyclophosphamide,
Doxorubicin, Vincristine and Prednisone as First-Line Treatment**



Interested in how the COVID-19 vaccine can impact fertility, especially with cancer risk or diagnosis? Elena Ratner, MD, Gynecologic Oncology @SmilowCancer will chat live & answer questions with @lisawexler The Lisa Wexler Show at 10:15am today @WICC600



Today on Yale Cancer Answers at 7:30pm @wnpr Dr. Melanie Lynch, Director of Breast Surgery for our Trumbull Fairfield & @BPTHOSP locations will discuss the latest in breast surgery and the team that takes care of each patient in @SmilowCancer #BreastCancer Program



A new multi-institutional analysis of the BrightNess #ClinicalTrial for #TNBC, with @MehraGolshan and colleagues, reveals subtyping and immune scores helps in clinical decision making and patient outcomes #bcsm via @JAMAOnco @YNHH @YaleMed @DanaFarber



"Cancer and Covid-19 may be distinctly different maladies, but there are fundamental similarities in the lived experiences of their #survivors. The more the two communities can learn from and support one another, the better."

Calendar

Yale ASH 2020 Highlights

OBGYN Presents RSSP

March 5; 3:00 PM

Endometrial Cancer in the Oldest Old: Retrospective Review at Yale University

Gary Altwerger, MD, BS

[Learn More](#)

Yale Cancer Answers

March 7; 7:30 PM

NPR

Pediatric Cancer Survivorship

Nina Kadan-Lottick, MD, MSPH

[Learn More](#)

Radiobiology and Radiotherapy Research Program

March 8; 11:00 AM

Enhancing Responses to Immuno-Oncology Therapies

Marcus Bosenberg, MD, PhD

[Learn More](#)

Smilow Shares

March 8; 6:00 PM

Breast Cancer Survivorship presented by the Smilow Cancer Hospital Care Centers in Waterford and Westbury

Doxorubicin, Vincristine and Prednisone as First-Line Treatment for Patients with Newly Diagnosed Peripheral T-Cell Lymphoma

Experimental Hematology and Oncology.

[Read More](#)

Vash-Margita A, Kobernik EK, Flagler E, Quint EH, Dalton VK (2021)

National Trends in Cervical Cancer Screening in Adolescents

Journal of Pediatric and Adolescent Gynecology, Online ahead of print.

[Read More](#)

Herbst RS, Wu YL, Tsuboi M (2021)

Osimertinib in EGFR-Mutated Lung Cancer. Reply

New England Journal of Medicine.

[Read More](#)

Funding and Award Opportunities

International Research Scientist Development Award (IRSDA) (K01)

The purpose of this Award is to provide support and protected time (three to five years) to advanced postdoctoral U.S. research scientists and recently-appointed U.S. junior faculty for an intensive, mentored research career development experience in a low- or middle-income country leading to an independently-funded research career focused on global health.

Application Deadline: March 9, 2021

[Read More](#)

Department of Defense (DoD) Breast Cancer Awards

- **Breast Cancer, Breakthrough Award Levels 1 and 2 - Application Deadline -** March 11, 2021, [Read More](#)
- **Breast Cancer, Era of Hope Scholar Award - Application Deadline:** March 11, 2021, [Read More](#)
- **Breast Cancer, Transformative Breast Cancer Consortium Award - Application Deadline:** March 12, 2021, [Read More](#)
- **Breast Cancer, Innovator Award - Application Deadline:** March 12, 2021, [Read More](#)
- **Breast Cancer, Breakthrough Award Level 3 - Application Deadline:** March 12, 2021, [Read More](#)
- **Breast Cancer, Breakthrough Award Level 4 - Application Deadline:** March 12, 2021, [Read More](#)

Social and Behavioral Intervention Research to Address Modifiable Risk Factors for Cancer in Rural Populations (R01)

The purpose of this FOA is to solicit applications to develop, adapt, and test individual-, community- or multilevel interventions to address modifiable risk factors for cancer in rural populations.

Application Deadline: March 15, 2021

[Read More](#)

The Blavatnik Fellowship in Life Science Entrepreneurship

Anca Bulgaru, MD | Catherine McCarthy, LCSW | Carrie Fijal, MSN, AGPCNP-BC, OCN | Natalie Smith, RD

[Learn More](#)

Yale Cancer Center Grand Rounds

March 9; 12:00 PM

Lung Cancer Clinical Care and Research at Yale: The Thoracic Disease Center

Roy S. Herbst, MD, PhD

[Learn More](#)

Human and Translational Immunology Seminar Series

March 9; 4:00 PM

Targeting Mononuclear Phagocytes in the Tumor Microenvironment

Malay Haldar, MD, PhD

[Learn More](#)

Yale New Haven Health - Working Parents & Guardians Group

March 10; 12:00 PM

[Learn More](#)

Department of Surgery Research Seminar

March 10; 4:00 PM

Faculty Development Awards Update

Michael Alperovich, MD, MSc, FACS & Cassius Iyad

Ochoa Chara, MD, MS, RPVI

[Learn More](#)

Pathology Grand Rounds

March 11; 12:30 PM

[Learn More](#)

Cancer Genetics and Prevention Seminar

March 11; 2:30 PM

[Learn More](#)

Center for GI Cancers Weekly Seminar

March 11; 4:15 PM

Journal Club

[Learn More](#)

Smilow Patient and Family Forum

March 11; 7:00 PM

[Learn More](#)

Yale Cancer Answers

March 14; 7:30 PM

NPR

Patient Perspective: COVID Vaccine and Cancer

Tara Sanft, MD

[Learn More](#)

The Blavatnik Fellowship in Life Science Entrepreneurship

This Blavatnik Fellowship is designed to foster entrepreneurial skills in the life sciences, linking emerging business leaders with breakthrough innovations from across Yale University, and has spun out many successful professionals.

Application Deadline: March 15, 2021

[Read More](#)

ACS/NESS Health Policy and Management Scholarship

This scholarship supports attendance and participation in the "Executive Leadership Program in Health Policy and Management" and is open to shared U.S. members in good standing between the ages of 30-60.

Application Deadline: March 17, 2021

[Read More](#)

V Foundation Pediatric Scholar and Translational Grant

The Pediatric V Scholar Award supports young tenure-track faculty early in their cancer research career by funding projects that are either laboratory-based fundamental research or translational research. Translational projects should move a novel strategy from the laboratory into a human clinical trial or use specimens from a clinical trial to develop biomarkers or mechanisms. Yale may nominate ONE nominee for a V pediatric grant.

Internal LOI Deadline: March 17, 2021

[Read More](#)

Breast Cancer Alliance Exceptional Project Grants

The BCA invites clinical doctors and research scientists at any stage of their careers whose primary focus is breast cancer to apply for an Exceptional Project Grant. This award recognizes creative, unique, and innovative research and is open to applicants throughout the US.

Internal LOI Deadline: March 17, 2021

[Read More](#)

Research on Biopsychosocial Factors of Social Connectedness and Isolation on Health, Wellbeing, Illness, and Recovery

This FOA invites research projects that seek to explain the underlying mechanisms, processes, and trajectories of social relationships and how these factors affect outcomes in human health, illness, recovery, and overall wellbeing.

Application Deadline: March 17, 2021

[Read More](#)

Cellular Cancer Biology Imaging Research (CCBIR) Program (U54)

The NCI invites applications for Cellular Cancer Biology Imaging Research (CCBIR) Centers. The Centers will develop and test enabling imaging technologies at the cellular and organ scales driven by specific fundamental questions in cancer biology. The overall purpose of the CCBIR initiative is to facilitate innovation in advanced imaging technologies that could be applied to fundamental basic and pre-clinical research problems in cancer biology.

Application Deadline: March 18, 2021

[Read More](#)

Alexis Lomaxade Stand 2021 Beach Grant

Yale Cancer Center Grand Rounds

March 16; 12:00 PM

Investigating Lineage Plasticity in Organoid Models of Prostate and Bladder Cancer

Michael M. Shen, PhD

[Learn More](#)

Pulmonary, Critical Care and Sleep Medicine Grand Rounds

March 17; 3:00 PM

Year in Review - Interventional Pulmonology

Kyle Bramley, MD & Mark Godfrey, MD

[Learn More](#)

Yale Head and Neck SPORE's Monthly Meeting

March 17; 6:00 PM

[Learn More](#)

Cancer Prevention and Control Research Seminar

March 18; 12:00 PM

Understanding Trends in E-cigarette Use Behaviors Among Youth and Marketing Through YouTube Analysis

Grace Kong, PhD

[Learn More](#)

Yale General Internal Medicine Research in Progress Meeting

March 18; 12:00 PM

If Lung Cancer Screening Works then Why Don't we Do it?: Using Data to Bridge Evidence and Practice

Ilana Richman, MD

[Learn More](#)

Pathology Grand Rounds

March 18; 12:30 PM

[Learn More](#)

Cancer Genetics and Prevention Seminar

March 18; 2:30 PM

[Learn More](#)

Yale Pancreatic Cancer Collaborative Seminar Series

March 18; 4:15 PM

Genomic Directed Therapies in Pancreatic Cancer

Eileen O'Reilly, MD

[Learn More](#)

Digestive Health Virtual CME Series 2021

March 18; 5:00 PM

Diverticulitis

Haddon Pantel, MD

[Learn More](#)

Yale Liver Tumor Lectures: A CME Series Presented

Justin S. Goldstein, MD, PhD

Alex's Lemonade Stand 2021 Reach Grant

The purpose of the Reach Grant is to advance ALSF's mission to find cures and better treatments for childhood cancers by providing support to move hypothesis-driven research into the clinic.

Application Deadline: March 22, 2021

[Read More](#)

Small Business Transition Grant for Early Career Scientists

This FOA aims to support early career academic scientists interested in transitioning to entrepreneurship while also supporting the transfer of technology from academic laboratories into small businesses.

Application Deadline: March 24, 2021

[Read More](#)

DoD Lung Cancer Research Program Funding Opportunities

The FY21 Defense Appropriations Act is anticipated to provide funding to the Department of Defense LCRP to support innovative, high-impact lung cancer research.

- **Concept Award – Letter of Intent Due:** March 31, 2021
- **Career Development Award – Letter of Intent Due:** March 31, 2021
- **Investigator-Initiated Translational Research Award – Preproposal Due:** May 5, 2021
- **Clinical Translational Research Partnership Award – Letter of Intent Due:** July 14, 2021

[Read More](#)

American Cancer Society Research Scholar Grants

The RSG supports investigator-initiated projects across the cancer research continuum. Independent investigators in the first 8 years of an independent research career or faculty appointment are eligible to apply.

Application Deadline: April 1, 2021

[Read More](#)

2021 SITC Fellowships

SITC is offering four Fellowships, totaling \$450,000 in funding. These fellowships are open to all early career investigators, domestic and international from academia and government. Please help us spread the word about these incredible opportunities.

- SITC–Bristol Myers Squibb Postdoctoral Cancer Immunotherapy Translational Fellowship (two years, \$200,000)
- SITC–Amgen Cancer Immunotherapy in Hematologic Malignancies Fellowship (one year, \$100,000)
- SITC–AstraZeneca Immunotherapy in Lung Cancer Clinical Fellowship (one year, \$100,000)
- SITC–Nektar Therapeutics Equity and Inclusion in Cancer Immunotherapy Fellowship (one year, \$50,000)

Application Deadlines: April 2, 2021

[Read More](#)

NIH RFI: Inviting Comments and Suggestions to Advance and Strengthen Racial Equity, Diversity, and Inclusion in Biomedical Research and Advance Health Disparities and Health Equity Research

This RFI invites feedback on the approaches the NIH can take to advance racial equity, diversity, and inclusion within all facets of the

by the Smilow Liver Cancer Program

March 18; 6:00 PM

Combination Therapy for Hepatocellular Carcinoma: A New Standard

Stacey Stein, MD

[Learn More](#)

Recent Advances in Multiple Myeloma

March 18; 6:00 PM

Natalia Neparidze, MD

[Learn More](#)

Smilow Shares

March 18; 7:00 PM

Advances in Colorectal Cancer

Pamela Kunz, MD | Jeremy Kortmansky, MD | Michael Cecchini, MD | Xavier Llor, MD, PhD | Vikram Reddy, MD, PhD

[Learn More](#)

Submissions

Please submit your recent publications, awards, and grant announcements to:

[Renee Gaudette](#)

Director, Public Affairs and Communications

advance racial equity, diversity, and inclusion within all facets of the biomedical research workforce and expand research to eliminate or lessen health disparities and inequities.

Responses Due: April 9, 2021

Read More

NCCN Request for Proposals (RFP): Phase I/II Clinical and/or Correlative Studies of the panHER Inhibitor Neratinib in the Treatment of Breast, Gastrointestinal, Lung, and Neurological Cancers

This RFP is to support NCCN Member Institution faculty for the performance of clinical and correlative studies to further evaluate the effectiveness of neratinib in the treatment of breast, gastrointestinal (GI), lung and neurological cancers.

Application Deadline: April 19, 2021

Read More

Cancer Grand Challenges Program

The NCI and Cancer Research UK (CRUK) are partnering to fund the Cancer Grand Challenges program. Cancer Grand Challenges will fund novel ideas by multidisciplinary research teams from around the world that offer the potential to advance bold cancer research and improve outcomes for people affected by cancer. These nine challenges are aimed at solving complex problems in cancer research, which, if solved, could have a transformative impact towards progress.

Application Deadline: April 22, 2021

Read More

NCCN/AstraZeneca Initiative Request for Proposals (RFP) in Patients with Early-Stage Non-Small Cell Lung Cancer (NSCLC)

The intent of this RFP is to encourage NCCN Member Institutions to submit LOIs describing concepts and ideas for developing, implementing, and evaluating healthcare provider performance and/or healthcare quality improvement initiatives to improve patient care and outcomes in early-stage NSCLC.

Letter of Intent Deadline: May 3, 2021

Read More

Breast Cancer Alliance Young Investigator Grant

To encourage a commitment to breast cancer research, the BCA invites clinical doctors and research scientists whose primary focus is breast cancer and who are in the early stages of their careers to apply for funding for the Young Investigator Grant.

Internal LOI Deadline: June 1, 2021

Read More

The Cure Starts Now Foundation Research Grants

Research questions considered - Disease Impact: Does the study propose an intervention or clinical tool that will reduce the morbidity or mortality from or potentially find a cure for pediatric brain cancer? Innovation: Does the research study propose a novel approach or represent advancement in current treatment of pediatric brain cancer?

Application Deadline: June 1, 2021

Read More

Brain Metastasis: Smith Foundation Disrupting Clinical Trial

Bristol Myers Squibb Foundation Diversity in Clinical Trials

Career Development Program

The BMSF DCTCDP is a 2-year program designed to support the career development of early-stage investigator (as defined by NIH) physicians underrepresented in medicine, or physicians who have a demonstrated commitment to increasing diversity in clinical research, to become independent clinical trial investigators who are engaged in advancing health equity through their research and mentoring.

Application Deadline: July 2, 2021

[Read More](#)