

**September 13, 2019**

## Announcements

### **Roy Decker, MD, PhD Appointed AD for Clinical Sciences**

I am pleased to announce the appointment of Roy H. Decker, MD, PhD, as Associate Cancer Center Director for Clinical Sciences. In addition, Roy will assume the role of Principal Investigator for our NCI National Clinical Trials Network Lead Academic Participating site (NCTN-LAPS-UG1) grant.



A Professor of Therapeutic Radiology, Roy's leadership in the Department as Vice Chair for Clinical Research, Director of the Residency Training Program, Director of the Stereotactic Body Radiotherapy Program, and Director of the Therapeutic Radiology Disease Aligned Research Team (DART) has significantly advanced the mission of our Cancer Center. Moreover, Roy's own research success has enabled meaningful improvements in the care and treatment of patients with lung, head and neck, and skin cancers. Given his record of accomplishment, mentorship, and collaboration, I am confident that Roy will be exceptional new leader for Clinical Research and our

*from the desk of*  
**Charles S. Fuchs, MD, MPH**  
Director, Yale Cancer Center  
and Physician-in-Chief  
Smilow Cancer Hospital

Yale  
NewHaven  
**Health**  
Smilow Cancer  
Hospital

Yale **CANCER**  
**CENTER**  
A Comprehensive Cancer Center Designated  
by the National Cancer Institute

[News Center](#)

Clinical Trials Operation at Yale Cancer Center and Smilow Cancer Hospital.

In his new role, Roy will work closely with Joyce Tull, MSN, RN, CCRP, Director of the Clinical Trials Office (CTO), and our Assistant Medical Directors in the CTO: Neal Fischbach, MD, Assistant Director for the Smilow Network; Scott Gettinger, MD, Assistant Director for Medical Oncology; Thomas Prebet, MD, PhD, Assistant Director for Hematology; and Stephanie Halene, MD, PhD, Assistant Director for the Clinical Research Support Lab. In addition, Roy and the team will partner with our Associate Cancer Center Directors, Research Program Leaders, and DART leadership to foster new innovations and collaborations across our Center. Please join me in welcoming Roy to his new role within Yale Cancer Center.

**Benjamin Judson, MD,**

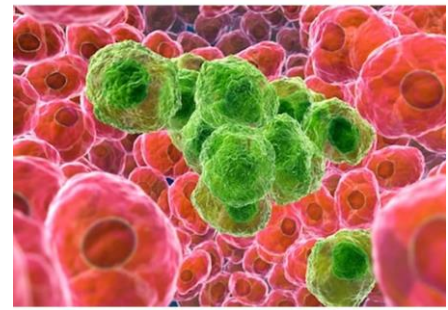
**Named Chief of Otolaryngology**

I am pleased to announce Benjamin L. Judson, MD, as Chief of the Division of Otolaryngology (ENT) in the Department of Surgery. Ben is Chief Ambulatory Officer for Smilow Cancer Hospital and an Associate Professor of Surgery. In addition, he is the Clinical Program Leader for the Head and Neck Cancers Program at Smilow Cancer Hospital. Please join me in congratulating Ben on this well-deserved appointment!



### **ASTRO Begins on Sunday**

Our radiation oncology team will head to Chicago this weekend to present clinical and translational research from their labs and clinical at Smilow Cancer Hospital at the annual American Society for Radiation Oncology



**'Game-changing' immunotherapy cancer drug boosts survival rates five-fold**

[Read More >>](#)



**Thousands of Bicyclists, Volunteers Participate in 9th Annual Closer to Free Ride in New Haven**

[Read More >>](#)



**Blavatnik gift will fund research into the biology of survival**

[Read More >>](#)

---

meeting. Thank you to the entire team for their incredible efforts and representation of Yale Cancer Center and Smilow Cancer Hospital at the meeting.

[Meeting Participation >>](#)

### **Smilow Network Recertified by QOPI®**

Smilow Cancer Hospital and our Care Center Network recently hosted a QOPI® Certification Review and I am proud to announce that both the Hospital and our Network have met the requirements for QOPI® Certification, ASCO's Quality Oncology Practice Initiative (QOPI®). The certification is for three-years and demonstrates a commitment to excellence and ongoing quality improvement, and highlights the amazing dedication of our faculty and staff. I would like to thank Kim Severino and the entire QOPI team for their dedicated efforts during the recertification process.

### **Remembering Ruth McCorkle**

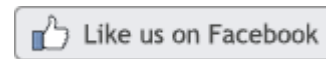
Please join our colleagues from throughout the University to pay tribute to Ruth and honor her lifelong legacy of nursing, mentorship, learning, and leadership on Tuesday, September 24 at 2 pm in Battell Chapel. Ruth's contributions have transformed the role of nursing in cancer research and patient care, and will continue to make significant impact. Yale School of Nursing will host a reception immediately following the memorial service at the Graduate Club on 155 Elm Street in New Haven. All are welcome.

### **Closer to Free!**

Thank you to all of our riders, volunteers, donors, and staff who came together to make last Saturday's Closer to Free Ride a wonderful success. We welcomed over 2,200 riders to the Yale Bowl and ended the day with an unparalleled celebration of patients, families, and supporters. The messages of encouragement, tributes, and stories that were shared throughout the day are just one of the many ways Smilow is such a special community. I look forward to announcing the final fundraising results with you all, and thank you for your incredible efforts to support patient care and cancer



### **Join Smilow Cancer Hospital on Facebook**



### **Latest Posts:**

Meet Debbie, a breast cancer survivor with a stressful job, she had been a smoker for over 20 years. Debbie used cigarettes as a way to relieve her stress and although she did quit once, for almost four years, she relapsed.

At one of her follow-up visits, her oncologist asked her an important question. "Would you like help to stop smoking?" She was referred to the Tobacco Treatment Program, a program offered to all patients treated at Smilow Cancer Hospital and its Care Centers throughout Connecticut.

"I can't say enough about how this program has helped me. The people involved are so generous with their time and so supportive to all of us. And for Smilow to offer this important program as part of my follow-up care has been a real blessing for me. It has changed my life and I am forever grateful."



[Read More >>](#)

Judi Gallagher and her colleagues in The Sisters' Project presented a check to Dr. Asher Marks, Director, Pediatric Neuro-Oncology and Amanda Garbatini, Adolescent and Young Adult Coordinator, to support

research at Smilow Cancer Hospital and Yale Cancer Center.



program needs in our Lauren Telesz/Smilow Teen Center. The Sisters' Project, which has supported several initiatives at Smilow Cancer Hospital, is committed to raising funds in support of cancer patients and their families, focusing their efforts on projects in the greater Wallingford community. Thank you for your support!



[Read More >>](#)

Dr. Aarti Bhatia discussed new options to treat head & neck cancers on Yale Cancer Answers on Connecticut Public Radio. Tune in to hear her interview, or download the podcast from our iTunes channel this week.

# Yale Cancer Answers

## Treatment Advances for Head & Neck Cancers

Sunday, September 8  
7:30pm on WNPR

[Read More >>](#)



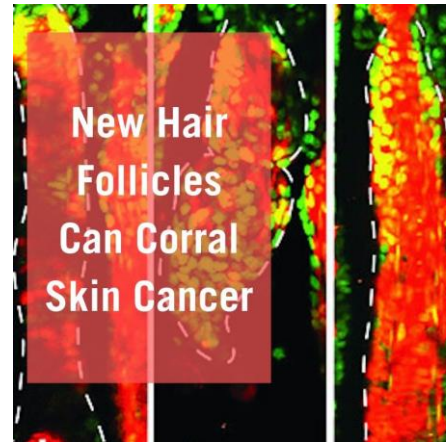
Please join us as we launch a support group for patients with Acoustic Neuroma and their family members or caregivers. The first meeting will be on Thursday, September 26 at 5pm.



[Read More >>](#)

A new Yale Cancer Center study has identified an unlikely source of protection against some forms of skin cancer - hair follicle regeneration.

"Hair follicles have a uniquely enhanced ability to contain mutant cells," said Yale's Cristiana Pineda. "The hair follicle emerges as a paradigm for principles that could be applied to other organs that do not rely on the immune system for the tolerance of mutant cells."



[Read More >>](#)

## Yale Cancer Center Annual Award Nominations

**Nominations for Annual YCC Awards:** Yale Cancer Center is pleased to announce our call for nominations for our annual awards in the areas of excellence in research and clinical care. Each award will be announced at the Yale Cancer Center Conclave in January. The nomination deadline for all awards is **Friday, November 1st.**

**Yale Cancer Center Research Prizes:** Research Prizes will be awarded in support of excellence in the areas of basic science, clinical science, translational science, and population science. Awards will be chosen in each area to recognize a paper that is considered to have had the greatest impact on the field this year. The nominee must be a current member of Yale Cancer Center and science in the publication must be cancer-

**Follow Yale Cancer Center on Twitter**

Follow us on [twitter](#)

focused. To be eligible, the nominee must also be either the first or last author of the publication. Please submit a PDF of the publication (publication date must be between October 2018 to October 2019) along with the category it should be considered for via email to [Anna Raso](#).

#### **Yale Cancer Center Award for Clinical**

**Excellence:** This award will be given to the physician who best exemplifies excellence in clinical care including super clinical skills, use of a patient- and family-centered approach to care, and inclusion of a multi-disciplinary care model. Nominee must be a current member of Yale Cancer Center. Please nominate yourself or a peer and send a brief nomination letter (one-page maximum) via email to [Anna Raso](#).


#### **Yale Cancer Center Lifetime Achievement**


**Award:** Yale Cancer Center recognizes the achievements of one of our senior members through our annual Lifetime Achievement award. Nominee must be a current member of Yale Cancer Center. Please send nomination suggestions for the award via email to [Anna Raso](#).


---


## **Notables**


**The Developmental Therapeutics Research Program** is proud to welcome **David C. Madoff, MD, FSIR, FACR, FCIRSE**. Dr. Madoff is Vice Chair for Clinical Research in the Department of Radiology and Biomedical Imaging. His specific expertise is in Interventional Oncology and his clinical interests are wide-ranging. Clinically, he specializes in the comprehensive management of patients with hepatobiliary malignancies. Dr. Madoff's research has largely focused on preoperative portal vein embolization, a technique used to improve the safety of major hepatic resection. Findings from research in this area have led him to develop a predictable, large animal model for cirrhosis, which has in turn been used to assess transcatheter treatment with various cellular therapies. In addition, Dr. Madoff plans to help in the development of strategies for the transarterial and intratumoral delivery of novel therapeutics for cancer treatment and immunotherapy. Dr. Madoff is a leader in academic radiology and liver cancer, has been an


 "It's incredible in the 20 years of this meeting how we've seen targeted therapy evolve to such specific drugs." @DrRoyHerbstYale discussed new #lungcancer treatment research presented @WCLC19


 Dr. Kerin Adelson spoke today at #NCCNpolicy summit on defining, measuring and applying quality in #cancer care.


 #Smilow Cancer Hospital's .@BezakKatrina, program manager for our CAR T-Cell Program, is attending the CAR-TCR Summit in Boston, sharing the knowledge and capabilities of the only CAR T Cell Program in Connecticut.

 We are pleased to announce Benjamin L. Judson, MD as Chief of the Division of Otolaryngology #ENT@YaleSurgery. Dr. Judson is Chief Ambulatory Officer for #Smilow Cancer Hospital and Clinical Program Leader for our Head & Neck Cancers Program.

 New research .@oncogenejournal led by @YaleCancer's Dr. Xiaoyong Yang shows the workings of a metabolic pathway that could aid in treating many forms of #cancer.

 Dr. Scott Gettinger presented new #lungcancer research @IASLC#WCLC2019 showing an #immunotherapy drug increased survival for certain #NSCLC patients!

 Our young patients helped to thank .@HopeonWheels for their generous research grant to support Dr. Gary Kupfer's efforts to fight #pediatriccancer.

 Dr. Aarti Bhatia will discuss new options to treat head & neck cancers on Yale Cancer Answers today at

invited speaker at numerous national and international meetings and serves on the editorial boards of many imaging and oncologic journals.


**Nina Kadan-Lottick, MD**, Associate Professor of Pediatrics (Hematology/Oncology) and a member of Yale Cancer Center's Cancer Prevention and Control Research Program, has been awarded a **U01 Collaborative Research Grant** through the NCI Moonshot Implementation Improving Outcomes for Pediatric, Adolescent and Young Adult Cancer Survivors RFA, to fund her research A Randomized Trial of a Mobile Health and Social Media Physical Activity Intervention Among Adolescent and Young Adult Childhood Cancer Survivors. Jason Mendoza at the University of Washington is co-PI on the grant, which includes \$3.8 million in funding.


**Gary Kupfer, MD**, Professor of Pediatrics (Hematology/Oncology) was presented with a \$300,000 Hyundai Scholar Hope Grant during a ceremony at Smilow Cancer Hospital on Monday through Hyundai's Hope on Wheels Program. Dr. Kupfer will use the funds to continue his research on Fanconi anemia.


The prestigious **British Medical Association (BMA) Medical Book Awards** awarded **DeVita, Hellman, and Rosenberg's Cancer: Principles & Practice of Oncology, 11th Edition** First Prize Oncology! The BMA awards promote excellence in medical publishing and seek to demonstrate its importance to medical education and training. **Dr. Vincent T. DeVita, Jr.**, the Amy and Joseph Perella Professor of Medicine, has co-edited the standard reference in oncology through eleven editions.


**The Yale Cancer Biology Training Program (CBTP)** recently celebrated the graduation of its second class of predoctoral and postdoctoral PhD trainees. Congratulations to this year's graduates: **Jocelyn Chen, Fernando J. DeMiguel, Daniel Kim, Meaghan McGeary, and Kiran Patel**. The CBTP provides comprehensive cancer training to add depth and clinical exposure in order to prepare PhD trainees to lead translational research. In addition to their pathfinding laboratory cancer research, these trainees have completed a rigorous series of courses that augment


7:30pm on @wnpr. Tune in to hear her interview, or download the podcast from our @iTunes channel this week.


 Over 2000 riders are on their way, riding to support patient care and research at #Smilow Cancer Hospital and @YaleCancer. Thank you for your incredible efforts! Here's to a safe and fun day!

 Can your hair protect you against #skincancer? New research @JCellBiol led by Dr. Cristiana Pineda @valentatormenta lab shows the regeneration of hair follicles protects against tumor growth.

 New research by .@MarkGerstein and colleagues finds hundreds of genes that may help drive #cancer growth.

 Dr. Carlos Oliveira partnered with @ACSNewEngland on @GMCT@WTNH to explain the importance of vaccinating your children against #HPV

 Meet three special kids who have been touched by #cancer and are cycling in the #CTFRide this Saturday to support #Smilow Cancer Hospital!

 Congrats to Dr. Allison Campbell! She is lead author on a new #Lungcancer study selected for the press program at #ASTRO19.

---

**#OOTB Thanks: Jessica Brito**

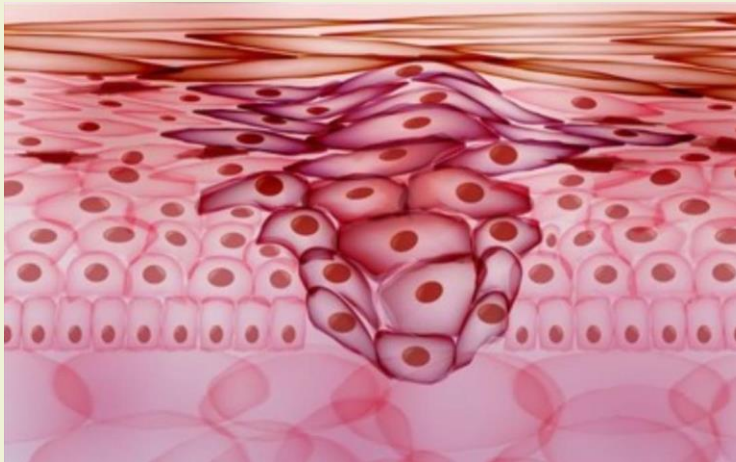
standard training. They have also benefited from clinical mentoring by Yale Cancer Center oncologists and surgeons. We thank the many faculty course leaders, clinical mentors, and teachers who contribute to this program. The CBTP is supported by T32 CA193200 from the National Cancer Institute (Peter Glazer and David Stern, PIs); by Yale Cancer Center, and by Yale School of Medicine. The CBTP is directed by David Stern, the registrar is Marrison DeLise.



YCC #OUTOFTHEBLUETHANKS recently recognized Jessica Brito, a Delivery Assistant 2 in the Clinical Research Support Lab. When Jessica noticed a colleague was ill, she stopped to ask if they needed help. Her coworker gladly accepted the offer and Jessica escorted them outside. She waited by their side until they were safely picked up. Her colleague was extremely grateful for Jessica's kindness and support. Jessica's actions were truly selfless and displayed her caring demeanor. Thank you, Jessica!

## Research Highlights

### YCC Researchers Find Aid to Help Treat Cancer



Yale Cancer Center scientists have uncovered the workings of a metabolic pathway or "gauge" that lets cancer cells detect when they have enough nutrients around them to grow. The researchers hope that drugs designed to turn down the gauge may eventually aid in

Yale Cancer Center's #OUTOFTHEBLUETHANKS program is a staff recognition initiative to show appreciation to employees who have exemplified an above-and-beyond effort or an outstanding contribution to the team. All nominations should be submitted to the Director's Office c/o [Anna Raso](#).

## Calendar

### Yale Cancer Answers

**September 15; 7:30 PM**

WNPR

*Lung Cancer Screening*

Isabel Cortopassi, MD

[Learn More >>](#)

### Yale Cancer Center Grand Rounds

**September 17; 12:00 PM**

55 Park Street, Park Street Auditorium

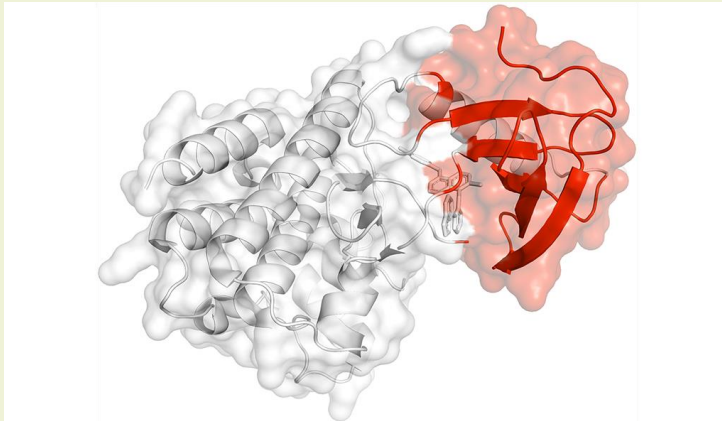


treating many forms of cancer. Their findings were published in the journal *Oncogene*.

"The cancer cell has an unlimited appetite for nutrients," said Xiaoyong Yang, PhD, associate professor of comparative medicine and of cellular and molecular physiology at YCC and senior author of the study. "But in many parts of the body, especially for solid tumors, nutrients and oxygen are often limited, so the cell has to make a decision to grow or survive. We have shown how the cell adapts to its microenvironment, detecting nutrient availability to make this decision."

[Read More >>](#)

### Yale Scientists Find New Cancer Gene Driver



Scientists have long searched for "driver" genes that fuel the progression of cancer, but existing technology has had a hard time separating mutations that are true drivers from others that are simply "passengers," not directly involved in spread of tumors. However, a team of Yale researchers has developed a model that marries biophysics, advanced gene sequencing technology, and statistics to identify at least 200 new genes which may drive cancer progression, they reported in the journal *Proceedings of the National Academy of Sciences*.

[Learn More >>](#)

### Biostatistics and Bioinformatics Support

Yale Cancer Center offers biostatistics and bioinformatics support to all members/projects through the Biostatistics Shared Resource (BSR), which is led by Dr. Shuangge (Steven) Ma. YCC members are eligible to receive up to 16 hours per year of service at

*Provider Volume and Cancer Outcomes: Moving Beyond Surgical Settings and into the Increasingly Complex Field of Medical Oncology*  
and

*DBiT-seq for High-Spatial-Resolution Multi-Omics Profiling*

Rong Fan, PhD and Scott Huntington, MD, MPH, MSc

[Learn More >>](#)

### Free Prostate Cancer Screening part two - Physical Exam

September 17; 5:30 PM

Greenwich Hospital

[Learn More >>](#)

### Laboratory Medicine Research Seminar

September 18; 12:00 PM

789 Howard Avenue, 401

*Chill Time? Cold-stored Platelets Revisited*

Moritz Stolla, MD

[Learn More >>](#)

### Cancer Immunology Research Program Seminar

September 18; 1:00 PM

Hope Memorial Building, H-216

*Experimental Therapies in Canine Cancer: From Kennel to Clinic (or From Bark to Bedside)*

Mark Mamula, PhD

[Learn More >>](#)

### State Chest Conference

September 18; 3:00 PM

Fitkin Memorial Pavilion Auditorium, LMP 1094

*Pulmonary Graft versus Host Disease after Hematopoietic Cell Transplantation: Where do we stand in 2019?*

Guang-Shing Cheng, MD

[Learn More >>](#)

no cost. Find out more at the Biostatistics and Bioinformatics Shared Resource webpage.

The BSR is happy to re-announce its drop-in consultation service. On-site biostatistics support will be provided by Dr. Wei Wei, an experienced statistician with special expertise in clinical trial design and analysis and general analytics. Bioinformatics support will be provided by Drs. Yong Kong and Gang Peng, both with extensive experiences in the analysis of genetic, genomic, proteomic, and epigenetic data.

Biostatistics Shared Resource (BSR) Drop-In Office Hours - WWW-211B

- Biostatistics with Dr. Wei Wei on Fridays from 1-3pm
- Bioinformatics with Dr. Gang Peng on Thursdays from 9am-12pm and with Dr. Yong Kong on Fridays from 3-5pm.

---

## Recent Publications

### **A two-stage phase II clinical trial design with nested criteria for early stopping and efficacy.**

DeVeaux M, Kane M, Wei W, Zelterman D.

Pharm Stat. 2019 Sep 10.

[Read More >>](#)

### **O-GlcNAcase targets pyruvate kinase M2 to regulate tumor growth.**

Singh JP, Qian K, Lee JS, Zhou J, Han X, Zhang B, Ong Q, Ni W, Jiang M, Ruan HB, Li MD, Zhang K, Ding Z, Lee P, Singh K, Wu J, Herzog RI, Kaech S, Wendel HG, Yates JR 3rd, Han W, Sherwin RS, Nie Y, Yang X.

Oncogene. 2019 Sep 9.

[Read More >>](#)

### **Regionalization of esophagectomy: where are we now?**

Clark JM, Boffa DJ, Meguid RA, Brown LM, Cooke DT.

J Thorac Dis. 2019 Aug;11(Suppl 12):S1633-S1642.

[Read More >>](#)

### **YCCI Clinical Research Faculty Dinner Series**

**September 18; 5:00 PM**

Nieson Irving Harris Building, Cohen Auditorium

*Dinner with the YSM Deputy Deans*

Linda Bockenstedt, MD | Michael Crair, PhD | Brian Smith, MD

[Learn More >>](#)

### **Pathology Grand Rounds**

**September 19; 12:30 PM**

Fitkin Memorial Pavilion Auditorium, LMP 1094

*Moving Pathology into the Digital Era*

Sylvia Asa, MD, PhD

[Learn More >>](#)

### **Cancer Genetics and Prevention Program Seminar**

**September 19; 2:30 PM**

Orchard Medical Center, 107-109

[Learn More >>](#)

### **Women in Medicine Annual Reception**

**September 19; 5:00 PM**

The Anlyan Center, 1st floor

Susan Baserga, MD '88, PhD '88

[Learn More >>](#)

### **Yale Brain Tumor Center and Smilow Cancer Hospital Presents September 20; 6:30 PM**

Stony Creek Brewery, Branford

*Brainstormin' - Playing for the Cure*

[Learn More >>](#)

### **Southeastern Connecticut Oncology Nursing Symposium**

**September 21; 8:00 AM**

Lawrence + Memorial Hospital, Baker Auditorium

Tara Anderson | Julie Baker | Katrina Bezak, MSN, APRN, FNP (BC) | Marianne Davies, NP | Jacqueline Dibble | Michael Szewczyk, PharmD |

**Hair follicle regeneration suppresses Ras-driven oncogenic growth.**

Pineda CM, Gonzalez DG, Matte-Martone C, Boucher J, Lathrop E, Gallini S, Fons NR, Xin T, Tai K, Marsh E, Nguyen DX, Suozzi KC, Beronja S, Greco V.

J Cell Biol. 2019 Sep 5.

[Read More >>](#)

**Temporal patterns and predictors of receiving no active treatment among older patients with acute myeloid leukemia in the United States: A population-level analysis.**

Zeidan AM, Podoltsev NA, Wang X, Bewersdorf JP, Shallis RM, Huntington SF, Gore SD, Davidoff AJ, Ma X, Wang R.

Cancer. 2019 Sep 4.

[Read More >>](#)

**Quantitative assessments and clinical outcomes in HER2 equivocal 2018 ASCO/CAP ISH group 4 breast cancer.**

Gupta S, Neumeister V, McGuire J, Song YS, Acs B, Ho K, Weidler J, Wong W, Rhees B, Bates M, Rimm DL, Bossuyt V.

NPJ Breast Cancer. 2019 Aug 29;5:28.

[Read More >>](#)

**A Pathway-Based Kernel Boosting Method for Sample Classification Using Genomic Data.**

Zeng L, Yu Z, Zhao H.

Genes (Basel). 2019 Aug 31;10(9).

[Read More >>](#)

**In vivo <sup>13</sup>C and <sup>1</sup>H-[<sup>13</sup>C] MRS studies of neuroenergetics and neurotransmitter cycling, applications to neurological and psychiatric disease and brain cancer.**

Rothman DL, de Graaf RA, Hyder F, Mason GF, Behar KL, De Feyter HM.

NMR Biomed. 2019 Sep 2:e4172.

[Read More >>](#)

**Association between perceived benefits and receipt of radiotherapy among older breast cancer patients.**

Killelea BK, Evans SB, Mougalian SS, Gross CP, Fraenkel L, Wang SY.

Breast J. 2019 Sep 3.

[Read More >>](#)

Kylie Kuck, MSN, APRN, AGCNS-BC  
| Lisa Rivera

[Learn More >>](#)

**Smilow Screening & Prevention Informational Table**

**September 22; 12:00 PM**

2019 Yale University Multicultural Block Party

[Learn More >>](#)

**Yale Cancer Answers**

**September 22; 7:30 PM**

WNPR

*Tobacco 21 Laws*

Abigail Friedman, PhD

[Learn More >>](#)

**Yale Cancer Center Grand Rounds/Joseph R. Bove, MD, Memorial Lectureship**

**September 24; 12:00 PM**

55 Park Street, Park Street Auditorium

*Genetically-modified Cell Therapies: The Next Wave in Immuno-Oncology*

Peter Marks, MD, PhD

[Learn More >>](#)

**YSPH Biostatistics Seminar**

**September 24; 12:00 PM**

47 College Street, 106-B

*The Clinical Trials Working Group*

Daniel Zelterman, PhD

[Learn More >>](#)

**Interventional Radiology Grand Rounds Lecture**

**September 25; 7:30 AM**

Fitkin Memorial Pavilion Auditorium, LMP 1094

*Stem Cells for Preventing Vascular Injury*

Sanjay Misra, MD

[Learn More >>](#)

**Grand Rounds for Non-Clinicians**

### **Spz/Toll-6 signal guides organotropic metastasis in *Drosophila*.**

Mishra-Gorur K, Li D, Ma X, Yarman Y, Xue L, Xu T.  
Dis Model Mech. 2019 Sep 2.

[Read More >>](#)

### **Margins in Laryngeal Squamous Cell Carcinoma Treated with Transoral Laser Microsurgery: A National Database Study.**

Hanna J, Brauer PR, Morse E, Mehra S.  
Otolaryngol Head Neck Surg. 2019 Sep 3:194599819874315.

[Read More >>](#)

### **Ask about smoking, not quitting: a chronic disease approach to assessing and treating tobacco use.**

Bernstein SL, Toll BA.  
Addict Sci Clin Pract. 2019 Sep 2;14(1):29.

[Read More >>](#)

---

## **Funding Opportunities**

### **The Vera and Joseph Dresner Foundation MDS Research Fund**

The fund will facilitate the advancement of innovative basic science, translational or clinical research to advance the understanding and treatment of Myelodysplastic Syndromes (MDS) and related blood disorders (such as MDS/myeloproliferative neoplasms (MPN) overlap syndromes, secondary acute myeloid leukemia following MDS, idiopathic cytopenia of undetermined significance (ICUS), or clonal hematopoiesis of indeterminate potential (CHIP).

The foundation will consider proposals from individuals at university, college, hospital, or laboratory institutions for support of research in MDS or related disorders in two types:

- Early Career Awards
- Established Investigator Awards

**Letter of Intent (LOI) Deadline:** LOIs are accepted on a rolling basis.

[Learn More >>](#)

### **September 25; 12:00 PM**

55 Park Street, Park Street Auditorium  
[Learn More >>](#)

### **Endocrine Workshop**

#### **September 25; 4:00 PM**

Fitkin Memorial Pavilion, 132  
*My Approach to Thyroid Cancer 1*  
Elizabeth H. Holt, MD, PhD

[Learn More >>](#)

### **Therapeutic Radiology Grand Rounds**

#### **September 26; 9:00 AM**

Smilow Cancer Hospital, New Haven, LL505  
*Surface Imaging Guided Radiotherapy Applications*  
Xiaoli Tang, PhD  
[Learn More >>](#)

### **Smilow Screening & Prevention Informational Table**

#### **September 26; 9:30 AM**

525 Orange Center Road  
*Orange Senior Health and Safety Fair*  
[Learn More >>](#)

### **Immunobiology Seminar Series**

#### **September 26; 10:30 AM**

The Anlyan Center, TAC Auditorium  
*Development and Plasticity of Human Innate Lymphoid Cells*  
Hergen Spits, MD  
[Learn More >>](#)

### **Smilow Screening & Prevention Informational Table**

#### **September 26; 11:00 AM**

Yale New Haven Hospital, St. Raphael Campus  
*National Prostate Cancer Awareness Month Event*  
[Learn More >>](#)

### **Pathology Grand Rounds**

### **NCI Youth Enjoy Science Research Education Program (R25)**

The over-arching goal of this NCI R25 program is to support educational activities that enhance the diversity of the biomedical, behavioral and clinical research workforce.

**Application Deadline:** September 25, 2019

[Learn More >>](#)

### **Susan G. Komen Career Catalyst Research Grant**

The topic area for the FY20 Career Catalyst Research Award is Redefining Metastatic Breast Cancer through Liquid Biopsy. The goal of this focus area is to support outstanding research seeking to use liquid biopsy techniques to improve treatment, detection, and understanding of metastatic breast cancer which will lead to a reduction in breast cancer deaths by 2026. Komen requests Letters of Intent for research projects that address one of the following focus areas:

- Refining treatment of metastatic breast cancer
- Early detection of metastatic breast cancer

Applications that fit the focus areas as detailed in the LOI Announcement and include studies that address metastatic breast cancer disparities, or leverage data science to better understand and treat metastatic breast cancer are highly encouraged. The award provides funding up to \$450,000 (direct and indirect costs combined) over 3 years.

**Application Deadline:** September 25, 2019

[Learn More >>](#)

### **AACR-AstraZeneca Clinical Immuno-oncology Research Training Fellowships Grant**

This grant is designed to encourage exceptional clinical research by bridging close collaboration between academia and industry.

September 27, 2019

[Learn More >>](#)

**September 26; 12:30 PM**

Fitkin Memorial Pavilion Auditorium,  
LMP 1094

*The Expanding Realm of  
Pleuropulmonary Blastoma*

Louis P. Delmer, MD

[Learn More >>](#)

### **Cancer Genetics and Prevention Program Seminar**

**September 26; 2:30 PM**

Orchard Medical Center, 107-109

[Learn More >>](#)

---

### **Submissions**

Please submit your recent publication and grant announcements to:

### **Renee Gaudette**

Director, Public Affairs and  
Communications

### **Alex's Lemonade Stand (ALSF) Single-Cell Pediatric Cancer Atlas**

Alex's Lemonade Stand Foundation (ALSF) is now accepting applications for the ALSF Single-cell Pediatric Cancer Atlas. ALSF seeks to build a Pediatric Cancer Atlas as an open resource for discovery with an initial goal of producing data that can be harmonized. ALSF seeks researchers to create datasets that profile pediatric cancers at a single-cell resolution level. Single-cell profiling can provide insights into the heterogeneity of cells in a tumor and the surrounding tumor microenvironment, as well as variability in the states of cancer cells, all of which can influence the cancer's response to treatments.

[Learn More >>](#)

### **Alex's Lemonade Stand Foundation (ALSF) 2020 Crazy 8 Initiative Award**

The Crazy 8 Initiative Award will fund research into innovative and rigorous approaches that directly address the most intractable issues in pediatric cancer research today.

**Application Deadline:** October 1, 2019

[Learn More >>](#)

### **Burroughs Wellcome Fund - Career Awards for Medical Scientists**

The Career Awards for Medical Scientists (CAMS) is a highly competitive program that provides \$700,000 awards over five years for physician-scientists, who are committed to an academic career, to bridge advanced postdoctoral/fellowship training and the early years of faculty service. Proposals must be in the area of basic biomedical, disease-oriented, or translational research. Proposals in health services research or involving large-scale clinical trials are not eligible.

**Application Deadline:** October 1, 2019

[Learn More >>](#)

### **Life Sciences Research Foundation - Postdoctoral Research Fellowship**

Since 1983, the Life Sciences Research Foundation (LSRF) has funded nearly 550 outstanding postdoctoral fellows in all areas of the life sciences, and raised more than \$50 million from generous industries, foundations, and individuals to support this effort.

[Learn More >>](#)

### **Cancer Research Institute - CRI Irvington Postdoctoral Fellowship Program Applications**

The Cancer Research Institute is currently accepting applications for its CRI Irvington Postdoctoral Fellowship Program. The CRI Irvington Fellowship furthers career development and supports laboratory research for promising young scientists working under the mentorship of leading immunologists.

Program Note: In recent years, significant advances in immunotherapy have yielded major breakthroughs in cancer treatment. CRI recognizes, however, that getting to the next great breakthrough will require continued investment in fundamental research and training. With this in mind, CRI accepts applications from qualified young scientists at leading universities and research centers around the world who wish to receive training in fundamental immunology or tumor immunology.

CRI is seeking hypothesis-driven, mechanistic studies in both immunology and tumor immunology that aim to directly impact our understanding of the immune system's role in cancer.

**Application Deadline:** October 1, 2019

[Learn More >>](#)

### **American Lung Association Lung Cancer Discovery Award**

Intended to support independent investigators conducting clinical, laboratory, epidemiological or any groundbreaking project aimed at revolutionizing our current understanding of lung cancer and improving diagnostic, clinical and treatment methods. A Letter of Intent (LOI) is required for this award.

**Letter of Intent (LOI) Deadline:** October 3, 2019

[Learn More >>](#)

### **Maximizing the Scientific Value of Existing Biospecimen Collections (R21)**

The purpose of this FOA is to invite R21 applications to stimulate exploratory research relevant to the mission of the FDA - Center for Tobacco Products using existing (publicly available) biospecimens currently stored in

repositories in the United States.

**Application Deadline:** October 8, 2019

[Learn More >>](#)

### **Secondary Analyses of Existing Datasets of Tobacco Use and Health (R21)**

The purpose of this FOA is to invite R21 applications proposing the innovative analysis of existing (publicly available) nationally representative U.S. cross-sectional and longitudinal data, to investigate novel scientific ideas and/or to generate new models, systems, tools, methods, or technologies that have the potential for significant impact on biomedical or biobehavioral research in areas relevant to the FDA- Center for Tobacco Products.

**Application Deadline:** October 8, 2019

[Learn More >>](#)

### **2020 WHRY Pilot Project Award**

WHRY's Pilot Project Program is currently seeking to fund studies that provide new approaches to understanding the health of women.

- General Annual Pilot Project Award (\$35,000 max) for research designed to meet a clear need in advancing women's health.
- Area-specific Pilot Project Award (\$50,000 max) for women's health research in the areas of depression, Alzheimer's disease, and other brain-based conditions such as autism spectrum disorder; cancers, especially endometrial cancer; or autoimmune disorders, particularly thyroid disease.
- Wendy U. & Thomas C. Naratil Pioneer Award (\$50,000 max)

**Application Deadline:** October 24, 2019

[Learn More >>](#)

### **2020 Pershing Square Sohn Prize for Young Investigators in Cancer Research**

This award provides greater New York City area-based early career scientists the freedom to take risks and pursue their boldest research at a stage when traditional funding is lacking.

**LOI's Due:** November 4, 2019



[Learn More >>](#)

### **Lion Heart Fund for Cancer Research**

The Lion Hearts are committed to finding a cure for cancer, and breast cancer in particular. In keeping with this mission, they understand the value of funding bright young minds - providing them with pilot funding to kick-start high potential research projects, and/or supporting innovative work requiring bridge funding.

**Deadline for Proposals:** November 4, 2019

[Learn More >>](#)

### **Terri Brodeur Breast Cancer Foundation Grant Program**

This award is intended to support scientists at earlier stages of their careers to enable the development of independent programs and compelling careers in breast cancer research.

**Application Deadline:** November 16, 2019

[Learn More >>](#)