

DirectConnect

Inside Yale Cancer Center

November 2, 2018

Announcements

Antonio Omuro, MD, Named Chief of Neuro-Oncology



I am very pleased to announce the appointment of Antonio Omuro, MD as the Chief of Neuro-Oncology at Yale Cancer Center and Smilow Cancer Hospital and a leader of our Brain Tumor Program. Dr. Omuro will join our faculty on December 1. I look forward to working with Antonio and the entire Brain Tumor Program team to continue to expand the breadth and impact of our clinical and research operations in Neuro-Oncology.

Dr. Omuro joins Yale from the University of Miami where he is currently Chief of the Neuro-Oncology Division and head of the Brain Tumor Program. He is an international leader in the clinical care and research of brain tumors, having led pivotal research programs, clinical trials, translational science, and care innovations to advance the treatment of these difficult cancers

from the desk of
Charles S. Fuchs, MD, MPH
Director, Yale Cancer Center
and Physician-in-Chief
Smilow Cancer Hospital

Yale
NewHaven
Health
Smilow Cancer
Hospital

Yale **CANCER**
CENTER
A Comprehensive Cancer Center Designated
by the National Cancer Institute

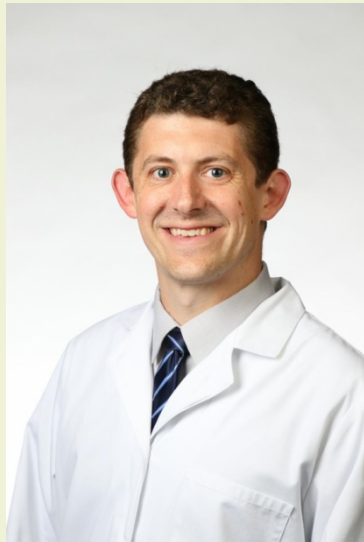
News Center



[Learn More >>](#)

Dr. Nicholas Blondin joins Smilow Cancer Hospital

Nicholas A. Blondin, MD, has been appointed an Assistant Professor of Clinical Neurology at Yale School of Medicine. Dr. Blondin will care for patients at Smilow Cancer Hospital in New Haven and the Smilow Cancer Hospital Cancer Care Center in Trumbull. He received his Medical Degree from the University of Connecticut School of Medicine and completed his residency as part of the Yale Neurology Program, where he served as Chief Resident, followed by a fellowship in Neuro-Oncology at Yale School of Medicine. Prior to joining Smilow, he was Director of the Neuro-Oncology Program at Associated Neurologists of Southern CT and Medical Director of the St. Vincent's Brain Tumor Center.



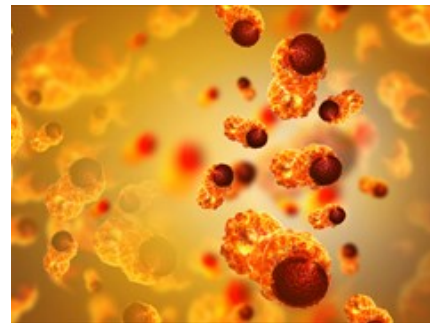
Americans really want to believe in alternative therapies for cancer

[Read More >>](#)



A more precise procedure to diagnosing a common cancer in American men WTNH

[Read more >>](#)



The spread of cancerous cells determined with new model developed at YSPH

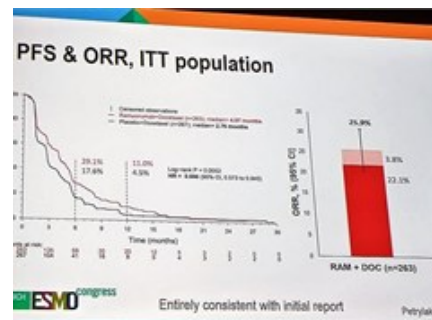
[Read More >>](#)

Notables

Our **Cancer Immunology Research Program** is proud to welcome **Kelly Olino, MD**. Dr. Olino is an Assistant Professor in the Department of Surgery (Surgical Oncology).



Dr. Olino is a former senior clinical fellow at Memorial Sloan Kettering Cancer Center. During this time, in collaboration with Diane Reidy-Lagunes she conceived of and wrote a single arm Phase II clinical trial investigating the use of pembolizumab for the treatment of advanced adrenocortical carcinoma. As a clinician, Dr. Olino had a broad surgical oncology practice and was an active member of the GI, melanoma, and sarcoma tumor boards.



ESMO 2018: Overall Survival Results - RANGE, Ramucirumab and Docetaxel In Platinum-Refractory Urothelial Carcinoma

[Read More >>](#)

Dr. Olino is caring for patients through both the Melanoma and Sarcoma Program at Smilow Cancer Hospital. She will be continuing her translational research efforts, in addition to her time focused on growing her new clinical practice.

Dr. Barbara Burtness, Co-Leader of the Developmental Therapeutics Research Program and the Head and Neck Cancers Program, presented the results from the KEYNOTE- 048 study at **ESMO** in Munich last week, showing that immunotherapy with pembrolizumab improves survival in patients with head and neck cancer that has recurred or metastasized.

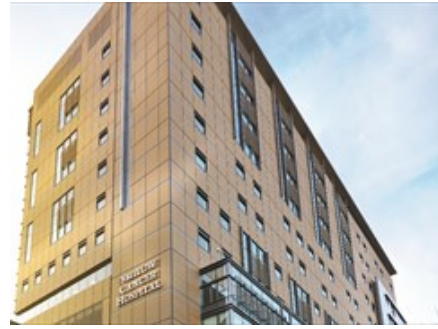


[Read More >>](#)

Dr. Barbara Burtness at ESMO

Dr. Daniel Petrylak, Co-Leader of the Signal Transduction Research Program and the Prostate and Urologic Cancers Program, presented the overall survival results from *RANGE*, a phase 3, randomized, placebo-controlled, double-blind trial of ramucirumab (RAM) and docetaxel (DOC) in platinum-refractory urothelial carcinoma (UC) at ESMO last week.

Dr. Elizabeth Claus, a member of Yale Cancer Center's Cancer Prevention and Control Program, will chair the upcoming **American Brain Tumor Association's** "Partners in Treatment & Care" meeting this Saturday in Needham, MA. This free, half-day educational meeting is for patients, caregivers, and families.



100 hospitals and health systems with great oncology programs | 2018

[Read More >>](#)



Breast cancer rates increasing twice as fast as global rate, according to WHO

[Read More >>](#)



First-line pembrolizumab a new standard for recurrent, metastatic head and neck squamous cell carcinoma

[Read More >>](#)



Join Smilow Cancer Hospital

Last Friday, **Dr. Andrea Silber**, Assistant Clinical Director for Diversity and Health Equity, presented "Immune Biological Differences Between Triple Negative Breast Cancer in African American and Non-African American Women and Potential Immunotherapy Opportunities to Improve Treatment Outcome" at **The National Cancer Institute Center for Cancer Research**.

The Breast Cancer Research Foundation has funded three Yale Cancer Center members with grants to support their research to advance breast cancer prevention and treatment. Professor of Pathology and Medicine, **Dr. David Rimm's** research will focus on developing an assay to match the right drug for HER2-positive breast cancer to the right patient. **Dr. Melinda Irwin**, Associate Director for Population Sciences, is conducting a clinical study to examine the effect of diet and exercise on biomarkers, body composition, and quality of life for women with breast cancer. And, **Dr. Lajos Pusztai**, Professor of Medical Oncology, is seeking strategies to improve response to immunotherapy in triple negative breast cancer.

Dr. Daniel Boffa, Professor of Surgery (Thoracic Surgery) and Clinical Program Leader for the Thoracic Oncology Program, has been named **Vice Chair of the Quality Integration Committee** for the **Commission on Cancer**.

The Connecticut Nurses' Association recently recognized the contribution Yale New Haven Hospital **Adult Sickle Cell Program** has made to integrate evidence based practice, lifelong learning, and patient centered quality outcomes into their practice by presenting the team with the **Excellence in the Workplace Award**. In five years since reorganization, the Sickle Cell Program, led by Dr. John Roberts, has been extraordinarily successful with the average length of inpatient stay falling from 12 days to 5 days, a 65% reduction in emergency department visits, a 20% decrease of outpatient clinic utilization, and overall program cost savings averaging \$2.7 million per year. Thank you to the entire team!

on Facebook



Latest Posts:



[Read More >>](#)

Smilow Cancer Hospital's Dr. Regina Hooley recently shared this reminder at Saint Francis Hospital's breast cancer symposium, and urged annual screenings to continue for women beginning at age 40.

Did you know?

80% of all women with newly diagnosed breast cancer have no risk factors.

[Read More >>](#)

"The goal of the Cardio-Oncology Program at Smilow Cancer Hospital is to help protect the hearts of patients with cancer so that they can go on to become survivors with



Yale New Haven Hospital Adult Sickle Cell Program team

Employee Profile: Anna Raso



As the Administrative Services Supervisor within the Director's Office at Yale Cancer Center, **Anna Raso's** role intersects many different areas. Her main responsibility, however, involves managing the recruitment of candidates for open faculty positions at the Cancer Center. Currently there are twenty-two open faculty positions, and as the clinical and research

programs continue to grow, so does the demand for high quality candidates.

Anna handles the scheduling and organization of each search committee meeting, as well as video-conference and on-site visits for all potential candidates. As a candidate progresses through the process, Anna schedules their travel, meetings, and seminars while they are in New Haven, and coordinates relocation services for them and their family if they are hired. In addition to focusing on the recruitment of clinical faculty and physician-scientists, Anna takes on a leadership role in planning major events such as the annual Holiday Party, the Conclave, and our Director's Advisory Board meetings.

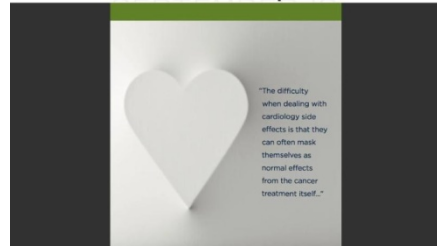
"Luckily I have a great team behind me that helps with

strong hearts. This goal requires a dedicated team of cardiovascular specialists working in close collaboration with oncologists to take care of the individual, not just a diagnosis."

Yale Cancer Answers

Cardio-Oncology: addressing the cardio-toxic side effects of chemotherapy

WNPR at 7:30pm

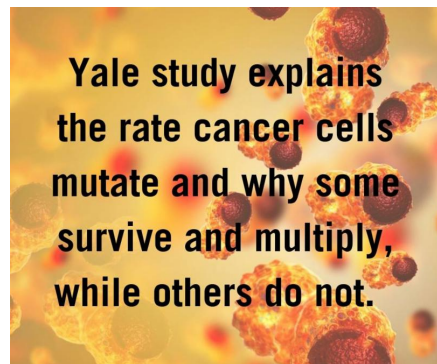


[Read More >>](#)

Yale Cancer Center's Jeffrey Townsend's lab has discovered a mathematical relationship that sheds new light on the rate at which cancer cells mutate and why some survive and rapidly multiply, yet others do not.

The finding has implications for decision-making for precision-medicine tumor boards, the selection and design of clinical trials, the development of pharmaceuticals, and basic research prioritization.

"For the past 10 years we've been able to calculate from tumor sequencing which mutated genes are winners and losers-which mutated genes help the cancer survive and reproduce, and which do nothing, but we haven't been able to compute their cancer effect size-how important one mutation is compared to another. Now we can."



[Read More >>](#)

logistics and triaging tasks as needed. I act as the point person for the Director's Office and there are routine and non-routine tasks that arise each day," said Anna. "It was a steep learning curve coming from a career in television, but I have enjoyed rising to the challenge and enjoy working in this field."

Anna also serves as an Administrative Manager for eight staff members that support 3-4 faculty each. She makes sure that they have everything that they need to be successful in their roles, and handles any issues that arise.

"Anna is absolutely a spectacular representative of Yale Cancer Center and Smilow Cancer Hospital. Every candidate who comes through comments on how organized, professional, and kind she is. She is someone who is incredibly dedicated to exceptional service in everything she does," said Kevin Vest, Deputy Director of Yale Cancer Center.

Funding Opportunities

Feasibility Studies to Build Collaborative Partnerships in Cancer Research

This FOA invites P20 planning grant applications for developing collaborative partnership between institutions serving underserved health disparity populations and underrepresented students and NCI- designated Cancer Centers (or Cancer Centers with highly integrated cancer research programs)

Application Deadline: November 14, 2018

[Learn More >>](#)

Prevention of HPV-related Cancers in HIV-infected individuals: United States-Latin American-Caribbean Clinical Trials Network: Partnership Centers

The purpose of this FOA is to facilitate the design, conduct, and completion of clinical trials for improving prevention of human papillomavirus (HPV)-related cancers in HIV-infected individuals.

Application Deadline: November 15, 2018

[Learn More >>](#)

The Breast Cancer Research Foundation funded three Yale Cancer Center members with grants to support their research to advance breast cancer prevention and treatment.



Breast Cancer Research Foundation awards grants to Yale Cancer Center members

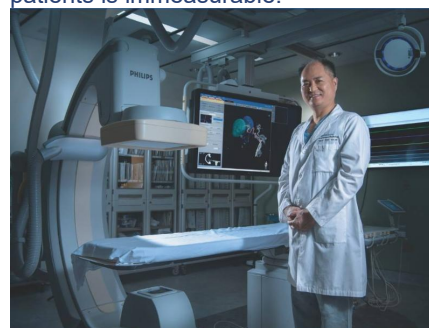
YaleNew Haven Health
Smilow Cancer Hospital

Yale Cancer Center

[Read More >>](#)

Often referred to as the fourth pillar of oncology, Interventional Oncology is a rapidly changing practice that provides definitive or palliative treatments of solid tumors using targeted, minimally invasive procedures. Dr. Kevin Kim leads the program at Smilow Cancer Hospital.

"What would have once been a major procedure for a patient, can now be done through a small incision. The benefit for our patients is immeasurable."



Interventional Oncology: Advancing Cancer Care

[Read More >>](#)

Follow Yale Cancer Center on Twitter

Cancer Prevention Clinical Trials Network (CP-CTNet): Data Management, Auditing, and Coordinating Center

Through this FOA, the NCI proposes and will support the Cancer Prevention Clinical Trials Network (CP-CTNet)

Application Deadline: November 15, 2018

[Learn More >>](#)

Physical Activity and Weight Control Interventions Among Cancer Survivors: Effects on Biomarkers of Prognosis and Survival (R21)

This FOA encourages transdisciplinary and translational research that will identify the specific biological or biobehavioral pathways through which physical activity and/or weight control (either weight loss or avoidance of weight gain) may affect cancer prognosis and survival.

Application Deadline: November 16, 2018

[Learn More >>](#)

Diet and Physical Activity Assessment Methodology (R21 Clinical Trial Not Allowed)

This FOA encourages innovative research to enhance the quality of measurements of dietary intake and physical activity.

Application Deadline: November 16, 2018

[Learn More >>](#)

Challenges and Opportunities for Understanding and Treating Small Cell Lung Cancer

The NCI is seeking broad input from the scientific community to identify areas of need and opportunity for small cell lung cancer (SCLC).

Application Deadline: November 18, 2018


[Learn More >>](#)


Innovation Corps (I-Corps™) at NIH Program for NIH and CDC Translational Research


Through this I-Corps™ at NIH program FOA, NIH and CDC provide administrative supplement awards to currently-funded SBIR and STTR Phase I grantees.


Application Deadline: November 19, 2018

Follow us on 


 The discovery of a simple modification in DNA could have big implications for #glioblastoma patients, says a new report from @YaleCancer researchers.


 "Despite our recent studies showing there is an increased risk of death with alternative therapies, there still quite a few people who are influenced by this misinformation".


 Dr. Michael Leapman describes how #Artemis helps to accurately diagnose #prostatecancer through image-guided biopsies at Smilow Cancer Hospital on @WTNH @Yale_Urology.

 Dr. Jeffrey Townsend's lab has discovered a mathematical relationship that sheds new light on the rate at which cancer cells mutate and why some survive and rapidly multiply, yet others do not.

 We're excited to welcome Dr. Antonio Omuro as our new Chief of #NeuroOncology and a Leader for the #BrainTumor Program at Smilow Cancer Hospital.

 Dr. Regina Hooley @YaleRadiology makes the case for continuing to screen women age 40-49 for #breastcancer at @SaintFrancisCT@YNHH symposium.

 Drs. Susan Rabinowe and Zia Rahman host a #breastcancer symposium today to share the latest in detection, treatment, and prevention.

 At #ASTRO2018@Kannjain presents his important research for using Deep Learning Neural Networks for #HeadAndNeckCancer.

[Learn More >>](#)

Oncology Co-Clinical Imaging Research Resources to Encourage Consensus on Quantitative Imaging Methods and Precision Medicine

The purpose of this FOA is to invite Cooperative Agreement applications to develop research resources that will encourage a consensus on how Quantitative Imaging (QI) methods are optimized to improve the quality of imaging results for co-clinical trials.

Application Deadline: November 19, 2018

[Learn More >>](#)

Discovery and Validation of Novel Targets for Safe and Effective Pain Treatment (R21/R01)

This R21 NIH Exploratory/Developmental Grant supports exploratory and developmental research projects by providing support for the early and conceptual stages of pain target discovery and validation projects

Application Deadline: November 27, 2018

[Learn More >>](#)

Discovery of Biomarkers, Biomarker Signatures, and Endpoints for Pain (R61/R33 Clinical Trial Optional)

The purpose of this FOA is to promote the discovery of strong candidate biomarkers and endpoints for pain that can be used to facilitate the development of non-opioid pain therapeutics from discovery through Phase II clinical trials.

Application Deadline: November 27, 2018


[Learn More >>](#)

Analytical and/or Clinical Validation of a Candidate Biomarker for Pain

The overarching purpose of FOA is to promote the validation of strong candidate biomarkers and endpoints for pain that can be used to facilitate the development of non-opioid pain therapeutics from discovery through Phase II clinical trials.

Application Deadline: November 27, 2018

[Learn More >>](#)

 Promising treatment news for patients with #headandneckcancer. New research by @BarbaraBurtness presented today #ESMO18 shows the #immunotherapy drug Keytruda prolonged survival for patients with this hard to treat #cancer.

Calendar

Yale Cancer Center Chalk Talk

November 2, 2018

SHM B-201

Probing the Role of Alternative Splicing in Cancer Through the Study of Genitourinary Malignancies

Srinivas R. Viswanathan, MD, PhD

[Learn More >>](#)

Hematology Research Seminar Series

November 2; 12PM

Brady Auditorium

Patterns of Care and Outcomes Among Older Adults with Myeloproliferative Neoplasms (MPNs)

Nikolai Podoltsev, MD, PhD

[Learn More >>](#)

Yale Cancer Answers

November 4; 7:30PM

WNPR

Surgical Advances for Lung Cancers

Daniel Boffa, MD

[Learn More >>](#)

YCC/Smilow Cancer Hospital Seminar

November 5; 11AM

Hope 103

Clinical, Translational Research in 2019: Working Smarter AND Harder

Janice M. Mehnert, MD

[Learn More >>](#)

Radiobiology and Radiotherapy Research Program

November 5; 11AM

YCC K12 Calabresi Immuno-Oncology Training Program (IOTP) Scholar Awards

We are pleased to solicit applications for the Yale Cancer Center K12 Calabresi Immuno-Oncology Training Program (IOTP) Scholar Awards for junior faculty to enhance research skills beyond the training provided during graduate and postgraduate training. Successful applicants are required to demonstrate a strong commitment to a career in cancer immunology. The two-year IOTP curriculum includes didactic and practical training in basic, translational and clinical aspects of cancer immunology research. The program also includes a required research component (either clinical or bench research, or a combination thereof). Applicants are required to identify a mentor and provide a research and mentorship proposal.

Application Deadline: December 1, 2018

[Learn More >>](#)

[Instructions to Apply >>](#)

Lion Heart Fund for Cancer Research 2019

The Lion Hearts are committed to finding a cure for cancer, and breast cancer in particular. Yale investigators are encouraged to submit proposals of innovative, high-potential projects requiring pilot funding. Projects may be in any area of breast cancer research - basic, translational, clinical, outcomes and population science are all welcomed from any discipline or group of disciplines.

Application Deadline:

December 4, 2018

[Learn More >>](#)

Fusion Oncoproteins in Childhood Cancers (FusOnC2) Consortium

This FOA, issued by the NCI, is associated with the Beau Biden Cancer MoonshotSM Initiative that is intended to accelerate cancer research.

Application Deadline: December 7, 2018

[Learn More >>](#)

NCI Research Specialist Award (R50)

This award encourages the development of stable research career opportunities for exceptional scientists

SHM I-304

A Human Papillomavirus Cell-Penetrating Peptide: From a Trigger of Retrograde Trafficking to a Novel Inhibitory Peptide

Penwei Zhang

[Learn More >>](#)

Yale Cancer Biology Institute Research Seminar

November 5; 3PM

Hope 110

Genomic Evolution of Cancer Models: Insights into Cancer Aneuploidy

Uri Ben-David, PhD

[Learn More >>](#)

Pathology Research in Progress Talks

November 6; 9:30AM

TAC N107

Contextual Regulation of Lung Adenocarcinoma Progression by Gata6

Anna Arnal Estapé PhD

TBA

Meiling Zhang, PhD

[Learn More >>](#)

SCH/YCC Free Head and Neck Cancers Screening

November 6; 11AM

ESPN

[Learn More >>](#)

YCC Grand Rounds

November 6; 12PM

Park Street Auditorium

Patient-Centered Care and Clinician Burnout / Resilience / Grit

Thomas H. Lee, MD

[Learn More >>](#)

YCC Chalk Talk

November 6; 1PM

Hope 103

Vision and Perspective on Yale Center for Immuno-Oncology

Zihai Li, MD, PhD

who want to pursue research within the context of an existing cancer research program, but not serve as independent investigators.

Letter of Intent Due: December 11, 2018

[Learn More >>](#)

The NCI Predoctoral to Postdoctoral Fellow Transition Award

The purpose of this Award (F99/K00) is to encourage and retain outstanding graduate students recognized by their institutions for their high potential and strong interest in pursuing careers as independent cancer researchers.

Internal Deadline: December 13, 2018

[Learn More >>](#)

Administrative Supplements to Cancer Center Support Grants to Strengthen NCI-Supported Community Outreach Capacity through Community Health Educators of the National Outreach Network

The purpose of this administrative supplement is to support a strengthening of community outreach capacity by working through the National Outreach Network (NON).

Application Deadline: December 15, 2018

[Learn More >>](#)

Pediatric Immunotherapy Discovery and Development Network (PI-DDN) (U54 and U01)

This FOA is associated with the Beau Biden Cancer MoonshotSM Initiative that is intended to accelerate cancer research. The purpose is to establish centers of collaborating investigators with the goal of identifying and advancing research opportunities for translating immunotherapy concepts for children and adolescents with cancer toward clinical applications.

Application Deadline: December 17, 2018

[Learn More >>](#)

Administrative Supplements to Cancer Center Support Grants to Strengthen the Research, Training, and Outreach Capacity of the Geographic Management of Cancer Health Disparities Program

Through this FOA, the NCI intends to: support seven region-based "hubs" or networks to facilitate underrepresented investigator/trainee recruitment and career/professional development; provide enhanced

[Learn More >>](#)

Human and Translational Immunology Seminar

November 6; 4PM

TAC N-203

Applications of Immunosequencing in Immunotherapy, Infectious Disease and Autoimmunity

Catherine Sanders, PhD

[Learn More >>](#)

SCH/YCC Lung Cancer Support Group

November 6; 5PM

55 Park Street Seminar Room

Evening of Celebration

[Learn More >>](#)

YCC Cancer Prevention and Control Research Seminar

November 7; 11AM

YSPH 105

Advancing Environmental Exposure Assessment in Epidemiologic Studies of Cancer

Nicole Deziel, PhD, MHS

[Learn More >>](#)

YSPH Seminar

November 7; 12PM

YSPH, 101

Integrative Analyses of Occupational and Environmental Exposures and Somatic Tumor Alterations in Bladder Cancer

Stella Koutros, PhD

[Learn More >>](#)

Cancer Metabolism Interest Group Seminar

November 7; 1PM

SHM B-201

Principles and Caveats for Measuring Mitochondrial Metabolism using Stable Isotopes

Richard Kibbey, MD/PhD

[Learn More >>](#)

capacity in the area of cancer health disparities research; and promote CHD research-related infrastructure development and evaluation.

Application Deadline: December 17, 2018

[Learn More >>](#)

Recent Publications

Effect of neoadjuvant chemotherapy on tumor-infiltrating lymphocytes and PD-L1 expression in breast cancer and its clinical significance.

Pelekanou V, et al. Breast Cancer Res 2017.

[Read More >>](#)

Association of Delayed Adjuvant Chemotherapy With Survival After Lung Cancer Surgery.

Salazar MC, et al. JAMA Oncol 2017

[Read More >>](#)

Lung cancer: epidemiology, etiology, and prevention.

Dela Cruz CS, et al. Clin Chest Med 2011

[Read More >>](#)

Applications of pHLIP Technology for Cancer Imaging and Therapy.

Wyatt LC, et al. Trends Biotechnol 2017.

[Read More >>](#)

Lung cancer in the era of precision medicine.

Politi K and Herbst RS. Clin Cancer Res 2015.

[Read More >>](#)

Twenty-First Century Precision Medicine in Oncology: Genomic Profiling in Patients With Cancer.

Borad MJ and LoRusso PM. Mayo Clin Proc 2017.

[Read More >>](#)

PhyloOncology: Understanding cancer through phylogenetic analysis.

Somarelli JA, et al. Biochim Biophys Acta Rev Cancer 2017.

SCH/YCC Meaning Centered Psychotherapy Group for Cancer Caregivers

November 7; 2:30PM

Smilow Cancer Hospital

[Learn More >>](#)

Therapeutic Radiology Grand Rounds

November 8; 9AM

Smilow, LL505

The Local Option: The Rational Use of Local Therapy in Patients at High Risk to Die from Systemic Progression

Daniel Boffa, MD

[Learn More >>](#)

Pathology Grand Rounds

November 8; 12:30PM

LMP1094

[Learn More >>](#)

Smilow Cancer Genetics and Prevention Program Seminar

November 8; 2:30PM

Orchard Medical Center, Suite 107-109

[Learn More >>](#)

L+M Wellness Series

November 8; 5:30PM

Baker Auditorium

Lung Cancer Screening Panel Discussion: Lung Cancer Screening: No Longer a Smoke Signal

Jane Kanowitz, MD, Frank Detterbeck, MD, FACS, FCCP, Benjamin Newton, MD, and Henry Park, MD, MPH

[Learn More >>](#)

Smilow Screening & Prevention Program

November 9; 8AM

2 Church Street South

YCCI Cultural Ambassador Program

[Learn More >>](#)

Yale Chemical Biology Fall Retreat

[Read More >>](#)

OncomiR or Tumor Suppressor? The Duplicity of MicroRNAs in Cancer.

Svoronos AA, et al. Cancer Res 2016.

[Read More >>](#)

Paraoxonase 2 Facilitates Pancreatic Cancer Growth and Metastasis by Stimulating GLUT1-Mediated Glucose Transport.

Nagarajan A, et al. Mol Cell 2017.

[Read More >>](#)

The use of lasers in the treatment of skin cancer: A review.

Mirza FN and Khatri KA. J Cosmet Laser Ther 2017.

[Read More >>](#)

Brain metastasis from ovarian cancer: a systematic review.

Pakneshan S, et al. J Neurooncol 2014.

[Read More >>](#)

Occupational exposure to pesticides and other biocides and risk of thyroid cancer.

Zeng F, et al. Occup Environ Med 2017.

[Read More >>](#)

New Strategies in Breast Cancer: Immunotherapy.

Pusztai L, et al. Clin Cancer Res 2016.

[Read More >>](#)

Novel targeted therapies in uterine serous carcinoma, an aggressive variant of endometrial cancer.

Menderes G, et al. Discov Med 2016.

[Read More >>](#)

Use of Alternative Medicine for Cancer and Its Impact on Survival.

Johnson SB, et al. J Natl Cancer Inst 2018.

[Read More >>](#)

The Role of PIWIL4, an Argonaute Family Protein, in

November 9; 8AM

Yale's West Campus

Michelle Arkin, PhD

[Learn More >>](#)

3rd Annual Hematologic Malignancies Symposium

November 9; 8AM

CT Convention Center

Francine Foss, MD

[Learn More >>](#)

Virus and Other Infection-associated Cancers Research Seminar

November 9; 1PM

SHM I-304

Tradeoffs in Host Defense During Rhinovirus Infection

Ellen Foxman, MD, PhD

[Learn More >>](#)

Yale Cancer Answers

November 11; 7:30PM

WNPR

Skull Based Tumors: Diagnosis and Treatment

Sacit Omay, MD

[Learn More >>](#)

Radiobiology and Radiotherapy Research Program

November 12; 11AM

SHM I-304

New-Generation Triplex-Forming PNAs for Site-Specific Genome Editing of F508del CFTR Mutation for Cystic Fibrosis Therapy

Anisha Gupta, PhD

[Learn More >>](#)

Epigenetics Interest Group Seminar

November 12; 12PM

BCMM 206/208

Dissecting the Roles of ARID2 in Cancer Metastasis and Immunity

Yao Li

Epigenomic Profiling of Breast Cancer

Breast Cancer.

Wang Z, et al. J Biol Chem 2016.

[Read More >>](#)

Metastasis Reveals an Organotropic Enhancer Landscape

Wesley Cai

[Learn More >>](#)

Yale Cancer Biology Institute Research Seminar

November 12; 3PM

Hope 110

The Control of Anti-Tumor Immunity and its Implications for Checkpoint Inhibitor Therapy

Shabnam Shalpour, PhD

[Learn More >>](#)

Pathology Research in Progress Talks

November 13; 9:30AM

TAC N-107

[Learn More >>](#)

Smilow Bracelets of Hope

November 13; 10AM

Smilow, NP 1-300

[Learn More >>](#)

YCC Grand Rounds/Calabresi Lecture

November 13; 12PM

Park Street Auditorium

No Man is an Island: Raising Cancer Care in the MENA Region

Fadlo R. Khuri, MD, FACP

[Learn More >>](#)

SCH/YCC Free Prostate Cancer Screenings

November 13; 4PM

Smilow Waterford

[Learn More >>](#)

Smilow Cancer and Prevention Informational Table

November 14; 9:30AM

Fellowship Place

Health Fair

[Learn More >>](#)

Developmental Therapeutics/Signal Transduction Research Seminar

November 14; 12PM

Hope 103

Gene Expression Regulation in Cancer as a Focal Point for Drug Discovery

Narendra Wajapeyee, PhD

[Learn More >>](#)

SCH/YCC Meaning Centered Psychotherapy Group for Cancer Caregivers

November 14; 2:30PM

Smilow Cancer Hospital

[Learn More >>](#)

Westerly Hospital Wednesday Wellness Series

November 14; 5PM

Westerly Hospital

Impact of complementary and alternative medicines on cancer survival

Skyler Johnson, MD

[Learn More >>](#)

Therapeutic Radiology Grand Rounds

November 15; 9AM

Smilow, LL505

Basic Guidelines for Managing Radiation Therapy Patients with Cardiac Implantable Electronic Devices (CIEDs)

Zhe Chen, PhD, FAAPM

[Learn More >>](#)

Pathology Grand Rounds

November 15; 12:30PM

LMP 1094

Molecular and Cellular Mechanisms of SCLC Development and Response to Therapy

Julien Sage, PhD

[Learn More >>](#)



**Smilow Cancer Genetics and Prevention
Program Seminar**

November 15; 2:30PM

Orchard Medical Center, Suite 107-109

[Learn More >>](#)

Submissions

Please submit your recent publication and
grant announcements to:

Renee Gaudette

Director, Public Affairs and
Communications