

November 14, 2014

## Announcements



### Susan Mayne Named to FDA Position

It is with very mixed emotions that I write to share the news that one of Yale Cancer Center's visionary leaders, Dr. Susan Mayne, has accepted the position of Center Director for The Center for Food Safety and Applied Nutrition at the Food and Drug Administration (FDA).

Susan, the C.-E.A. Winslow Professor of Epidemiology and Chair of the Department of Chronic Disease Epidemiology at Yale School of Public Health and Associate Director for Population Sciences at Yale Cancer Center, has been a key member of the Yale community since 1987. Beginning in 1993, Susan directed Yale Cancer Center's Cancer Prevention and Control Research Program for 17 years, and has served as Associate Director for Population Sciences since 1995. For me, she has been a crucial advisor over the last 5 years as we transformed many areas of the Cancer Center and submitted our successful CCSG to the NCI.

Susan and her trainees have received national recognition for their outstanding research, and Susan is the recipient of national awards in mentoring/training and for her service to many organizations including the National Academy of Sciences. Susan is well known in the cancer community, having served on the Board of Scientific Counselors for the NCI. She has also led a

*from the desk of*

**Thomas J. Lynch, Jr., MD**

Director, Yale Cancer Center

Physician-in-Chief Smilow Cancer

Hospital at Yale-New Haven

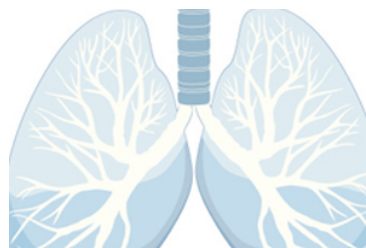


### Recent News

Read recent articles featuring experts from Yale Cancer Center

[News Center >>](#)

### LATEST ARTICLES:



CMS supports Medicare coverage of lung cancer screening

[Read More >>](#)

competitively funded cooperative training program in cancer epidemiology and genetics with the NCI since 2003. It is a testament to Susan's research excellence and exceptional leadership that she has been given this new opportunity to apply her expertise to significant public health issues at the national level.

I wish Susan tremendous success in her new role at the FDA. This is a well-deserved acknowledgment to her research and leadership achievements thus far, and I know she will be an accomplished leader at the FDA in the coming years. Susan will begin her new role in January 2015. I hope you will join me in congratulating Susan on this high honor.

### **Doximity and U.S. News & World Report Rankings**

As many of you know, our annual ranking for reputation through *U.S. News & World Report's* annual Best Hospital's Guide is not a true reflection of the exciting translational research, innovative science, and fantastic patient care happening here at Smilow Cancer Hospital at Yale-New Haven. Each year the methodology for calculation of reputation and rank changes, and this past year *U.S. News* introduced online voting for reputation scores through [www.doximity.com](http://www.doximity.com).

Thank you to those of you who have already registered and who voted online last year through Doximity. We recently learned that the deadline for registering to be included in the 2015 voting is **Friday, December 5th**. If you have not already created or verified your account, please take a moment to do so.

*U.S. News & World Report's* partnership with Doximity allows board certified physician members of the online website to nominate up to five hospitals in their specific certified specialty for the Best Hospital's designation. Once you have registered through Doximity, you will be prompted to vote through an email early in 2015.

Please take the time to do this, and to recognize the great work you're a part of each day at Smilow in cancer patient care and translational research.

### **ESAB on Campus Today**

Yale Cancer Center welcomes members of our External Scientific Advisory Board (ESAB) to campus today for our annual meeting. Chaired by Dr. Stanton Gerson, the Board gathers once a year to review presentations from the leadership of the cancer center research programs and shared resources and to provide recommendations



Immunotherapies Continue to Impress in NSCLC Trials With Several Forecast for Approval  
[Read More >>](#)

### **Follow Yale Cancer Center on Twitter**

Follow us on [twitter](#)

#### **LATEST TWEETS:**

"This is wonderful news for patients" @DrRoyHerbstYale on coverage for #lungcancer screening @HemOncToday  
<http://bit.ly/1tDIeOJ> @YaleMed

Checkout "Q&A: Exploring the relationship between faith and medical treatment"!  
<http://yaledailynews.com/blog...>

Director @YaleTomLynch talks about lung cancer resistance to front line therapy.  
<http://bit.ly/1srtGRp> @OncLive



We are proud to be a lead site for the @LungMAP clinical trials and

to the Cancer Center leadership following a thorough review of the programs.

ESAB Members in attendance today:

*Colin Begg, PhD*  
Associate Director, Population Sciences  
Memorial Sloan Kettering Cancer Center

*David Cella, PhD*  
Professor and Chairman, Department of Medical Social Sciences  
Robert H. Lurie Comprehensive Cancer Center

*Wendy Demark-Wahnefried, PhD, RD*  
Associate Director for Cancer Prevention and Control  
UAB Comprehensive Cancer Center

*Robert Diasio, MD*  
Mario Clinic Cancer Center Director  
Mayo Clinic Cancer Center

*Stanton Gerson, MD*  
Cancer Center Director  
Case Comprehensive Cancer Center

*Bruce Haffty, MD*  
Professor and Chair, Department of Radiation Oncology  
Cancer Institute of New Jersey

*Mark Israel, MD*  
Cancer Center Director  
Norris Cotton Cancer Center

*Linda Malkas, PhD*  
Deputy Director of Basic Research  
City of Hope Comprehensive Cancer Center

*Garth Powis, DPhil*  
Center Director  
Sanford-Burnham Medical Research Institute

*Erie Robertson, PhD*  
Program Leader, Tumor Virology research Program  
Abramson Cancer Center

*Thomas Sellers, PhD, MPH*  
Center Director, Executive Vice President  
H. Lee Moffitt Cancer Center & Research Institute

*Brian Springer, MHA*  
Vice President, Research Administration  
H. Lee Moffitt Cancer Center & Research Institute

partners with @TheALCF &  
@CancerResrch @LungMAP  
<http://bit.ly/1GyF0FO>

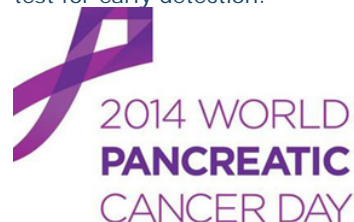
🐦 "I'm hoping that cancer prevention will be a highlight in Washington health policy as well." @SenBlumenthal at CT Cancer Partnership Meeting

## Join Yale Cancer Center on Facebook

Like us on Facebook 

### LATEST POSTS:

Today we mark the first-ever World Pancreatic Cancer Day. The brainchild of [Pancreatic Cancer Action Network](#), World Pancreatic Cancer Day is designed to help raise awareness about pancreatic cancer. Each year there are more than 280,000 new cases of Pancreatic Cancer. Unlike some cancers, pancreatic cancer is often diagnosed at late stages, because there is little awareness of the symptoms and risks, and there is no test for early detection.



[Read](#)

[More >>](#)

Smilow Cancer Hospital patients, family and friends collaborated with artist Noel Sardalla to create "A Thousand Journeys," a special art display featuring 1,000 handmade paper cranes, now on view in the Patient & Family Resource Center. Visitors can write a message or wishes of hope that will be turned into additional cranes. In Japan, the tradition of folding 1,000 origami cranes is done when someone has a wish, whether it is for peace, health or luck.

*Michael Weber, PhD*  
Cancer Center Director Emeritus  
University of Virginia Cancer Center

*Eileen White, PhD*  
Associate Director for Basic Science  
Cancer Institute of New Jersey

### **Smilow 5-Year Anniversary Awards**

In celebration of the 5th anniversary of Smilow Cancer Hospital, and in recognition of our care providers, we will be honoring four providers with awards during our 5-year anniversary celebration on Friday, January 30 at the Omni Hotel.

[Learn More >>](#)

### **Smilow Compassionate Caregiver Awards**

The Smilow Compassionate Caregiver Awards celebrate caregivers who put in their whole heart to take excellent care of our patients, advocate for our patients, and work in partnership with the healthcare team to ensure the care plan is followed to achieve the treatment goal.

Three awards will be given to honor a Physician, Nurse, and Social Worker.

[Download Application >>](#)

### **Smilow Achievement Award**

The Smilow Achievement Award will be presented to a role model who has made a significant contribution to the culture and patient care at Smilow Cancer Hospital or at our Care Centers. Their career has demonstrated a sustained and lasting contribution to the field of oncology and their influence has made a positive impact on care for our patients.

One award will be given to honor an individual whose influence, mentorship, and positive impact on cancer care has made a positive difference at Smilow Cancer Hospital.

[Download Application >>](#)

## **Notables**

Congratulations to our **Head and Neck Cancer Program!** Yale-New Haven Hospital has been listed as the **#3 screening site in the world** by the **Head and Neck Cancer Alliance** for the number of patients screened last year during our annual screening programs. This effort was spearheaded by **Joseph Mendes**, Surgical Services Clinical Manager for the ENT

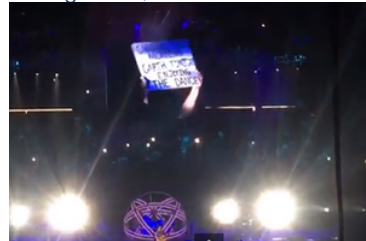


[Read](#)

[More >>](#)

On Friday night, Teresa Shaw, a mother of three who's battling stage 3 breast cancer, attended Garth Brooks' show in Minneapolis. A fan of this country music star, Teresa held a sign that read "Chemo this morning. Garth tonight. Enjoying 'The Dance.'"

Brooks, who lost both his mother and sister to cancer, noticed Teresa. He serenaded her with his hit "The Dance" and traded his guitar for her sign. With an emotional crowd looking on, Brooks told Teresa, "You have all of my strength. You have everybody's strength in here. And you go kick cancer's ass!" We here at Yale Cancer Center are sending you all of our strength too, Teresa!



[Read](#)

[More >>](#)

Lauren Hill, a freshman at Mount St. Joseph University near Cincinnati, Ohio, was diagnosed with Diffuse Intrinsic Pottine Glioma (DIPG), a terminal cancer of the brainstem, shortly after her 18th birthday last year. When Lauren, a passionate basketball forward, received this devastating news, she asked first: "Can I still play basketball?"

Lauren once again has the opportunity to play her favorite sport. Lauren will wear #22 before a sold out crowd in Mount St. Joseph's season opener today. All of us here at Yale Cancer Center are rooting for you, Lauren!

team, and **Dr. Wendell Yarbrough**, Director of our Head and Neck Cancer Program, along with a committee of dedicated people. 429 people were screened at last year's events!

**Kathryn Pratt, RN, BSN** has been named one of 5 finalists for **The 2014 Schwartz Center Compassionate Caregiver Award**. Kathryn is a nurse coordinator for our Stem Cell Transplant Unit. "Kathryn gives patients confidence in their decisions to move forward with transplant and provides the connection and support they need during this very scary time," said her nominating colleague. Good luck to Kathryn when they announce this year's winner at the annual dinner on November 20th. The Smilow community is very proud of you!

**The Blavatnik Family Foundation** has awarded **Pantelis Rempolas, PhD** with a Regional Award of \$10,000 in recognition of his contributions to our understanding of tissue development and regeneration. Dr. Rempolas is a postdoctoral fellow in **Dr. Valentina Greco's** laboratory.

**Hari Deshpande, MD** presented at the **American Thyroid Association Annual Meeting** on the *Frequency of Lymph Node Involvement in Parathyroid Carcinoma: A Seer Database Analysis*. The poster was done in collaboration with Drs. Udelsman, Carling, Quinn, Holt, Inzucchi, Burtness, Morgensztern, and Callender.

## New Member Profile:

### Vasilis Vasiliou, PhD

Yale Cancer Center accepts applications for new membership to our eight research programs from Yale faculty who have major cancer related efforts in research, patient care, or education throughout the calendar year. For more information, please see the Membership section on our [website](#).



[Read](#)

[More >>](#)

## Closer to Free

# closer to free

The fund to advance cancer research and enhance patient care

## Events

**November 14; 12:00 PM**  
**YCC Research in Progress Meeting**  
NP4-101A

*Beyond Original Intent: Using Corporate Databases for Health Research*

Martin David Slade, MPH

[Read More >> \(PDF\)](#)

**November 14; 1:00 PM**  
**YCC Molecular Virology Research Program**

SHM I-304

*Viruses and Human Cancer: A Historical Review*

S. David Hudnall, MD

[Read More >> \(PDF\)](#)

**November 15; 6:30 AM**  
**The 2nd Annual New England Endocrine Tumor Symposium at Yale**

Park Street Auditorium  
Tobias Carling, MD, PhD

**November 16; 6:00 PM**  
**Yale Cancer Center Answers**  
WNPR

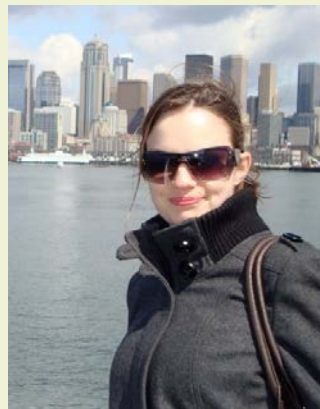


**Vasilis Vasiliou, PhD**, Professor of Epidemiology, is a well-established investigator with training in pharmacology, toxicology & molecular biology and expertise in aldehyde dehydrogenases (ALDHs), knockout mouse models & drug development. Dr. Vasiliou is interested in understanding the role of ALDHs in cancer and especially in cancer stem cells. His further involvement in developing new CRC mouse models, identifying new cancer biomarkers, developing novel therapies, and identifying new molecular targets for cancer make him a very welcome addition to the Developmental Therapeutics (DT) Research Program. [Learn More >>](#)



## Employee Profile: Emily Fenton

Emily Fenton began her career at Yale Cancer Center as an intern in the Public Affairs and Marketing Department immediately following college graduation. A couple of years later she was hired as a full time employee and has been with the Cancer Center in Communications for almost 10 years. She is involved in the design, implementation, and updating of the YCC website, and writes several articles for *Centerpoint Magazine* and *Breakthroughs*, our annual Year in Review.



"There is always something new and it is great to be in a position where I have the opportunity to meet and interact with faculty, staff, and even patients. It puts into perspective just how much goes into the care of patients and the facility as a whole, and who we are truly working for," said Emily. "It is also amazing to see all of the research and advances being made here and what that means for the future."

*Fertility Preservation*  
Cindy M. Duke, MD, PhD and Lubna Pal, MD  
[Read More >>](#)

**November 17; 12:00 PM**  
**YCC Cancer Genetics and Genomics Faculty Lunch**  
Breast Medical Oncology Conference Room, Suite 120  
*Histone Demethylases Contribute to 3'UTR Maintenance*  
Lauren Blair, PhD  
[Read Mpre >> \(PDF\)](#)

**November 17; 11:00 AM**  
**Radiobiology and Radiotherapy Research Program**  
SHM I-304  
*A Novel Mechanism of Therapy Resistance in Hereditary Cancer*  
Sharon Cantor, PhD  
[Read Mpre >> \(PDF\)](#)

**November 18; 9:30 AM**  
**Pathology Research in Progress Talks**  
TAC N-107  
TBA  
Hai Feng Zhang PhD and Jessica Nouws PhD  
[Read More >>](#)

**November 18; 12:00 PM**  
**YCC Grand Rounds/John Murren, MD Memorial Lectureship**  
Park Street Auditorium  
*Tumor Genomics to Immunotherapeutics: Perspective on Non-Small Cell Lung Cancer"*  
David Gandara, MD  
[Read More >> \(PDF\)](#)

**November 20; 9:00 AM**  
**Therapeutic Radiology Grand Rounds**  
Smilow, LL-412  
*Radiology of the Head and Neck Made Ridiculously Easy*  
James Abrahams, MD  
[Read More >>](#)

**November 20; 5:00 PM**  
**YCC Program for Humanities in Medicine**  
Beaumont Room  
*Medical Mastermind*

Another critical part of Emily's job is coordinating events such as Cancer Survivors Day and helping to produce Yale Cancer Center Answers, the weekly radio program on WNPR that features guest cancer specialists who share the most recent advances in cancer therapy. Day-to-day Emily helps with the behind the scenes upkeep of YCC communications and is always willing to lend a hand. She enjoys being part of such a great team and is proud to say she is part of the Yale community.

"Emily has been a huge part of the success of Yale Cancer Center's communications and events over the last decade, having led many of our events and participated in the production of our publications. She is dedicated to her work, well respected, and manages many of the details behind the scenes. I am grateful we have the opportunity to work together to meet the Cancer Center's needs," said Renee Gaudette, Director of Public Affairs and Marketing.

## Closer to Free: Upcoming Events

### "Empowered by Music" with Pianists

#### Steven Beck and Victor You

to benefit Oncology Social Work Fund at Smilow  
November 22, 2014

7:00 - 9:00 PM

Center Church on the Green, New Haven

For tickets and information, email  
[empoweredbymusic@gmail.com](mailto:empoweredbymusic@gmail.com)

### The Melissa Marottoli Hogan Foundation's Gala for a Cure

to benefit the Thoracic Oncology Translational Research  
Fund

January 17, 2015

7:00 - 10:00 PM

Woodwinds in Branford, CT

For tickets and information, contact [Lindsay Marottoli Greenberg](#)

Maria Konnikova

[Read More >>](#)

### November 21; 12:00 PM YCC Research in Progress Meeting

NP4-101A

TBA

Lajos Pusztai, MD

[Read More >>](#)

### November 21; 1:00 PM YCC Developmental Therapeutics & Signal Transduction Research Program

SHM I-116

*Using Small Molecules to Engineer and  
Explore Human Immunity*

David A. Spiegel, PhD, MD

*PSMA Targeted Therapy for the  
Treatment of Castration Resistant  
Prostate Cancer*

Daniel P. Petrylak, MD

[Read More >> \(PDF\)](#)

### November 23; 6:00 PM Yale Cancer Center Answers

WNPR

*Endocrine Oncology*

Glenda Callender, MD, FACS

[Read More >>](#)

## Holiday Party!



Save the date to join Yale Cancer Center and Smilow Cancer Hospital for our annual holiday party at the Peabody Museum!

Thursday, December 18th

5:30 - 7:30 PM

Families are welcome!

[Learn More >>](#)

## Funding and Award Opportunities

### Melanoma Research Alliance Grants

*Established Investigator Awards*

#### Research Awards

Up to \$125,000 per year for 2 - 3 years.

*Special Opportunity: Bristol-Myers Squibb-MRA Established Investigator Awards in Immunotherapy*  
Up to \$125,000 per year for 2 - 3 years to conduct projects focused on advancing the immunotherapies in melanoma.

#### *MRA Pilot Awards*

\$50,000 per year for 2 years for potentially transformative pilot studies.

#### *Special Pilot Opportunity: Society for Immunotherapy of Cancer-MRA Pilot Award*

\$50,000 per year for 2 years potentially transformative pilot studies in the area of immunotherapy.

#### *MRA Established Investigator Academic-Industry Partnership Awards*

Up to \$100,000 per year for 2 - 3 years. Industry funds and/or in-kind support (e.g., reagents, clinical grade drugs, equipment, contract services) must match but may exceed MRA funds for the award period. Industry scientists may serve as co-investigators or collaborators, but may not be PIs. (Deadline: November 21, 2014)

#### *Special Opportunity: Amgen-MRA Established Investigator Academic-Industry Partnership Award*

In collaboration with Amgen, applications are solicited for preclinical or correlative laboratory studies related to the therapeutic potential of oncolytic virus immunotherapy in melanoma, alone or in combination with immune modulators (e.g., checkpoint inhibitors) or targeted therapies. Potential biomarkers of response in local and distant tumors and immune cell-type identification/evaluation in tumors and systemic changes related to oncolytic virus immunotherapy treatment are of interest. Mechanism of action studies using in vivo imaging or molecular techniques to differentiate direct versus immune-mediated effects are encouraged. Up to \$100,000 per year for 2 to 3 years from MRA may be requested. Amgen funds will match MRA funds for the award period for a total combined award amount of up to \$600,000.

## Submissions

Please submit your recent publication and grant announcements to:

**Renee Gaudette**  
Director, Public Affairs and Marketing  
[renee.gaudette@yale.edu](mailto:renee.gaudette@yale.edu)

 Forward to a Friend



### **MRA Young Investigator Awards**

Investigators within 4 years of their first academic faculty appointment.

#### *MRA Young Investigator Awards*

Up to \$75,000 per year for 3 years for translational research projects.

#### *Special Opportunity: MRA Young Investigator Award in Dermatology*

Seeking applications from dermatologist young investigators who remain actively engaged in patient care and are proposing studies in melanoma prevention, diagnosis/staging, and treatment.

### **MRA Team Research Awards**

*Special Opportunity: Bristol-Myers Squibb-MRA Team Science Awards in Immunotherapy:* Awards for multidisciplinary teams of two or more established PIs, along with at least one Young Investigator to conduct projects with the potential to lead to transformative advances in melanoma immunotherapies. Up to \$900,000 total over 2 - 3 years may be requested.

#### *MRA Team Science Academic-Industry Partnership Awards*

These awards are designed to facilitate progress via interactions between the academic and industrial research sectors in the team setting, and will be co-funded by MRA and an industrial collaborator whose involvement is essential to the project. Multidisciplinary teams of two or more established PIs will receive up to \$500,000 total over 2 - 3 years from MRA to conduct projects supported by preliminary data. Each team must include at least one Young Investigator as a co-investigator.

**Application Deadline:** November 21, 2014

[Learn More >>](#)

### **Damon Runyon Cancer Research Foundation Damon Runyon Clinical Investigator Award 2015**

- For junior faculty with the **MD or MD/PhD** who are conducting patient-oriented cancer research and are capable of moving seamlessly between the laboratory and the patient's bedside in search of breakthrough treatments.
- Clinical research supported will include patient-oriented research, epidemiological and behavioral studies, outcomes research and health services research.

- nitial full-time faculty appointment cannot have been made earlier than July 2011.

**Application Deadline:** November 25, 2014

[Learn More >> \(PDF\)](#)

### **YCCI Clinical and Community Research Scholar Awards**

We are pleased to announce a request for applications for YCCI Clinical and Community-Based Research Scholar Awards, which will provide salary and/or research funds to a select number of junior faculty members who are strongly committed to careers in clinical and/or community-based research. Individuals must be nominated by a department chair, division head/section chief, or center/program director. Awards will be for a total of 2 years. Funds can be requested to cover up to 75% of an individual's salary (with a maximum of \$100,000 per year including fringe benefits) and up to \$20,000 of research support per year for a research project.

**Letter of Intent Deadline:** December 12, 2014

[Learn More >> \(PDF\)](#)

### **YCCI Pilot Awards**

The Yale Center for Clinical Investigation (YCCI) is pleased to announce the 2014 round of pilot grants.

YCCI's pilot program is a funding venue for conducting small-scale research projects to generate data that potentially could lead to further research and funding opportunities. YCCI will accept proposals in the following categories:

#### *Translational and Interdisciplinary Research*

This award is aimed at fostering interdisciplinary teams to work collaboratively on key experiments that may lead to the next phase of discovery. These projects should be strategically targeted to conduct research that will lead to the next step along the road to translation. Investigators may request up to \$50,000 per year for two years of funding totaling \$100,000.

#### *Outcomes, Research into practice, and Community-Engaged Research*

Ensuring that research is translated into practice is a difficult transition to navigate. This award is for comparative outcomes and community engagement projects that bridge the gap between science and the proven efficacy of treatments in order to translate these findings into practice. Investigators may request up to

\$25,000 per year for two years of funding totaling \$50,000.

#### *Novel Clinical and Translational Methodologies*

This award is to advance technologies post discovery with an eye toward preclinical development. The aim is to provide funding for mature new technologies that are clinically viable or for the translational advancement of medical devices/treatments. These projects should be able to generate data that will facilitate industry collaboration in order to move concepts into the healthcare market. Investigators may request up to \$20,000 total cost for a 12 month period. Proposals of \$10-15,000 are particularly encouraged.

#### *Established Cores*

Yale has several world-class cores but conducting research that utilizes these technologies is costly. This award is for pilot projects using such established cores as flow cytometry, genomics, and imaging for research that will lead to the funding of full-fledged grants. YCCI solicits applications from Yale faculty for translational and clinical research projects that utilize the resources and expertise found in the PET Center, MMRC, Flow Cytometry, CyTOF, or YCGA. Investigators may request up to \$20,000 total cost for a 12 month period.

#### *Emerging Cores*

Core technologies change as science progresses.

**Letter of Intent Deadline:** December 12, 2014

[Learn More >> \(PDF\)](#)

## Recent Publications

### **Isolation of Epithelial, Endothelial, and Immune Cells From Lungs of Transgenic Mice with Oncogene-Induced Lung Adenocarcinomas.**

Bantikassegn A, Song X, Politi K.  
Am J Respir Cell Mol Biol. 2014 Oct 27.

[Read More >>](#)

### **Control of dataset bias in combined Affymetrix cohorts of triple negative breast cancer Thomas Karn, Achim Rody, Volkmar Muller, Marcus Schmidt, Sven Becker, Uwe Holtrich, and Lajos Pusztai**

Genomics Data. Volume 2, December 2014, Pages 354-356

[Read More >>](#)

**Comparison of Lymphedema Incidence Between 2 Lymphadenectomy Techniques in Patients With Uterine Cancer Undergoing Robotic Staging.**

Menderes G, Azodi M, Schwartz P, Silasi DA.  
Int J Gynecol Cancer. 2014 Nov 10.

[Read More >>](#)

**A phase II study of induction chemotherapy followed by thoracic radiotherapy and erlotinib in poor risk stage III non-small cell lung cancer: Results of CALGB 30605 (Alliance)/RTOG 0972 (NRG).**

Lilenbaum R, Samuels M, Wang X, Kong FM, Jänne PA, Masters G, Katragadda S, Hodgson L, Bogart J, Bradley J, Vokes E.

J Thorac Oncol. 2014 Nov 7.

[Read More >>](#)

**A germline polymorphism of thymine DNA glycosylase induces genomic instability and cellular transformation.**

Sjolund A, Nemecek AA, Paquet N, Prakash A, Sung P, Doublie S, Sweasy JB.

PLoS Genet. 2014 Nov 6;10(11):e1004753.

[Read More >>](#)

**Differences in Funding Sources of Phase III Oncology Clinical Trials by Treatment Modality and Cancer Type.**

Jairam V, Yu JB, Aneja S, Wilson LD, Lloyd S.  
Am J Clin Oncol. 2014 Nov 4.

[Read More >>](#)

**Has Hospice Use Changed? 2000-2010 Utilization Patterns.**

Aldridge MD, Canavan M, Cherlin E, Bradley EH.  
Med Care. 2014 Nov 4.

[Read More >>](#)

**Lung Cancer Screening.**

Tanoue LT, Tanner NT, Gould MK, Silvestri GA.  
Am J Respir Crit Care Med. 2014 Nov 4.

[Read More >>](#)

**Chronic Thalidomide and Chemoembolization for Hepatocellular Carcinoma.**

Wu J, Ng J, Christos PJ, Goldenberg AS, Sparano J, Sung MW, Hochster HS, Muggia FM.

Oncologist. 2014 Oct 31.

[Read More >>](#)

**Establishing an academic laboratory: mentoring as a business model.**

Greco V.

Mol Biol Cell. 2014 Nov 1;25(21):3251-3.

[Read More >>](#)

**UV Signature Mutations;**

Brash DE.

Photochem Photobiol. 2014 Oct 29.

[Read More >>](#)