

August 2, 2013

Announcements

Breast Cancer Research Foundation Funds 3 YCC Members

I am excited to announce that three members of Yale Cancer Center have received one-year grants from the Breast Cancer Research Foundation. This is a wonderful tribute to the depth of research we have ongoing in breast cancer, and great recognition for these three investigators. Each will receive \$240,000 to support their research projects beginning on October 1.

Melinda Irwin, PhD: *Biological and Biochemical Effects of Exercise and Diet on Breast Tissue.*

Lajos Pusztai, MD: *Characterization of Intratumor Heterogeneity in Breast Cancer and its Clinical Implications.*

David Rimm, MD, PhD: *Whole Exome Sequencing of Cancer Samples from the NeoALTTO Clinical Trial and Studies of Immunologic Targets in Breast Cancer*

Pediatric Oncology Ranked by U.S. News & World Report

Yale-New Haven Children's Hospital (YNHCH) has been ranked among the best in the nation for five of its pediatric subspecialties in the 2013-14 Best Children's Hospitals rankings, published online by *U.S. News & World Report*. YNHCH ranked in cancer (#31); diabetes and endocrinology (#4); gastroenterology (#25); pulmonology (#44); and urology (#37).

This is the first time that pediatric oncology has been ranked by *U.S. News*. Our efforts will continue to ensure we are building the very best cancer programs for our patients, both in adult and pediatric services, and meeting our patients' needs each day.

"While we are very proud of our ranking in *U.S. News*, a first for our program, it represents just one step in our continued efforts to raise pediatric oncology at Yale into the upper echelon of programs across the country," Gary Kupfer, MD, Chief of Pediatric Hematology/Oncology said.

from the desk of

Thomas J. Lynch, Jr., MD

Director, Yale Cancer Center

Physician-in-Chief Smilow Cancer

Hospital at Yale-New Haven



Join Yale Cancer Center on Facebook

Like us on Facebook 

Follow Yale Cancer Center on Twitter

Follow us on 

Closer to Free

closer to free

The fund to advance cancer research and enhance patient care

Links of Interest

CV Library

The CV library is a new resource available to our members, with

Join us for the Closer to Free Ride

The 3rd Annual Closer to Free Ride will take place on Saturday, September 7. I will be riding 62.5 miles alongside my son Donovan, while my wife Laura takes on the 100-mile century!

I hope you will consider riding - either 25, 62.5, or 100 miles. If you aren't able to ride, please consider volunteering.

Volunteers are critical to making this event a success - help staff one of our rest stops, if you are licensed massage therapist, join our massage team, or sign up to help along the route keeping our riders well fed, hydrated, and supported!

All riders start at 7:00 AM and depart from the Yale Bowl. The ride ends with a finish line celebration at the Bowl. The general public is invited to attend the celebration - there will be food, beverages, live entertainment, kids activities, and more! Riders and volunteers should register online.

Support the ride by displaying a lawn sign at your home! Lawn signs are available right here in the Smilow Boutique so please consider picking one up and placing it in your yard.

If you can't ride or volunteer, there is one final way you can help! Join patients, employees, and visitors outside the Smilow main entrance on the morning of the ride and cheer on our riders as they pass our hospital. We will provide breakfast for you and ask that you arrive by 6:45 am. Nothing will be more motivating to our riders than to see your smiling faces and heartfelt thanks. The riders will pass through by 7:15 AM.



For more information on the ride please call (203) 200-CTFR or visit www.ridecloserstofree.org

[Watch a video on the Ride >>](#)

Notables

CVs of post-docs and others looking for positions at Yale. Please browse the listings if you have openings, and send the CVs you receive to share.

[Learn More >>](#)

In the News

Read recent articles featuring experts from Yale Cancer Center.

[Read More >>](#)

Subscribe to Yale Cancer Center Answers on iTunes

Yale Cancer Center's weekly radio program on CT Public Radio is ranked number 2 in the world for cancer programs on iTunes. Subscribe to the show.

[Learn More >>](#)

Yale Cancer Center Grand Rounds

Video presentations from Yale Cancer Center members are now available online.

[Learn More >>](#)

DirectConnect Archives

[Learn More >>](#)

ASCO Connection Blog

The Power of Cancer
by Anees Chagpar, MD

[Read More >>](#)

Events

August 4; 6:00 PM

Yale Cancer Center Answers

WNPR

Patient Perspective: Brain Metastases

[Learn More >>](#)

August 8; 9:00 AM

Therapeutic Radiology Grand Rounds

Smilow, LL-412

Title TBD

[Learn More >>](#)

August 11; 6:00 PM

Yale Cancer Center Answers

OncLive has named the 2013 **Giants of Cancer Care** in 12 different disease areas. **Dr. Thomas Lynch** was chosen for lung cancer and **Dr. Vincent DeVita** was named for lymphoma by a national advisory panel of oncology educators, clinicians, and researchers.

[Learn More >>](#)

Tae Hoon Kim, PhD a member of the Genetics and Genomics Research Program, has recently received two grants to support his research efforts. The Connecticut Stem Cell Research Fund has provided him with \$750,000 to study "Pluripotency and Heterochromatin Topology" and the National Institute of Allergy and Infectious Diseases at the NIH has awarded him with an R21 to research "Nuclear, Genomic and Molecular Regulation of Type I Interferon Transcription."

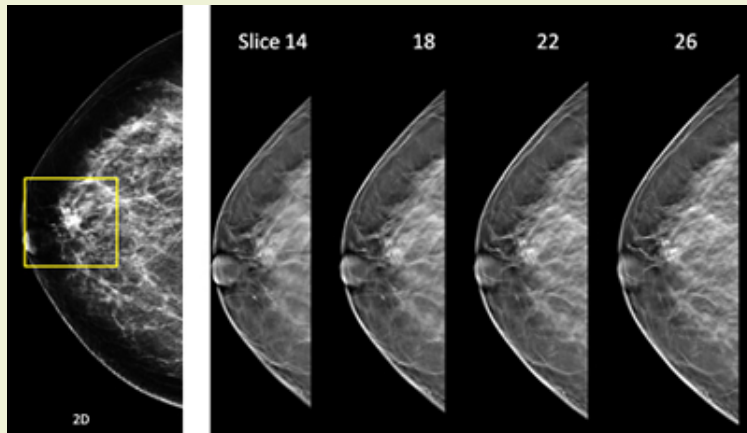
Meena Moran, MD has been named Co-Chair Elect for the 2014 Breast Cancer Symposium and will Chair the Fellows, Residents, and Junior Faculty Tract of this year's meeting in September.

Congratulations to **Jennifer Mulligan** who is celebrating 20 years of service at Yale University this month, and to **Kristin Kaley** who is celebrating 5 years. Jennifer is the Associate Director for Finance and Administration for Yale Cancer Center. Kristin is an APRN for medical oncology on Smilow 8.

On July 27, **Daniel Petrylak, MD** gave a presentation entitled "New development in the treatment of advanced prostate cancer" as part of an international delegation sponsored by the Prostate Cancer Foundation in Shanghai China. The panel was comprised of basic scientists and clinicians and was aimed at fostering collaboration in prostate cancer research between China and United States.

Research in the News

Detecting breast cancer: 3-D screening reduces recall rates



Tomosynthesis, or 3-dimensional (3-D) mammography,

WNPR
Pediatric Oncology
Gary Kupfer, MD
[Learn More >>](#)

August 15; 9:00 AM Therapeutic Radiology Grand Rounds

Smilow, LL-412
Advanced MR Evaluation of Growing Enhancing Lesions Following Gamma Knife Treatment: MR Spectroscopy and MR Perfusion
Frank Minja, MD
[Learn More >>](#)

Employment Opportunities

We seek your assistance in the recruitment of qualified Oncology Research Nurses to join the Cancer Center for full time research opportunities. Positions traditionally require a minimum of BSN and 4 years of research nursing experience with a strong preference within oncology. In lieu of research experience, trained oncology nurses with little or no research experience are considered for positions of the same level. Should you know of any potential candidates, please encourage them to go on-line to www.yale.edu/jobs and navigate to the STARS employment website in search of positions 18343BR and 18943BR, upload the resume and apply. They may also contact [Sandra Greer](#) for further information.

Submissions

Please submit your recent publication and grant announcements to:

Renee Gaudette
Director, Public Affairs and Marketing

renee.gaudette@yale.edu

significantly reduced the number of patients being recalled for additional testing after receiving a mammogram, a Yale Cancer Center study found. The study appears in the journal *Radiology*.



Tomosynthesis creates a high-resolution, three-dimensional reconstruction of the breast, which can then be viewed as sequential slices through the breast. Tomosynthesis has been shown to increase the visibility of many lesions, and helps to distinguish potentially cancerous findings from otherwise normal breast tissue.

The Yale researchers studied more than 13,000 patients who were screened. Of these, 6,100 received tomosynthesis plus mammography, and 7,058 underwent conventional digital mammography alone. The recall rate was 8.4% for patients in the tomosynthesis group, and 12% for the mammography-alone group.

[Read More >>](#)

Closer to Free

As **Closer to Free** begins its third year, we are encouraged by the fundraising results of the 2012-2013 fiscal year. Through our direct mail efforts and the online giving website Give Closer to Free, the program raised \$306,000. This is a result of 3,355 gifts to Closer to Free, many in memory or in honor of friends and family. Combined with the successful 2012 **Closer to Free Bike Ride** that raised over \$700,000 last September, Closer to Free has provided over \$1 million this fiscal year for our cancer enterprise. With the powerful Closer to Free flash mob commercials, Closer to Free posters and collateral in Smilow Cancer Hospital and many of the new Care Centers throughout the state as well as the anticipation of the third annual Ride on September 7, Closer to Free will continue to gain momentum as it becomes widely known and acknowledged as the fund to support for cancer research and patient care in Connecticut.

Funding and Award Opportunities

Yale SPORE in Skin Cancer Developmental Research Awards

The YALE SPORE in Skin Cancer is pleased to announce the availability of Developmental Research Awards beginning 30 September 2013 to fund projects in amounts up to \$50,000 for one year (Projects may be eligible for a second year of funding, pending receipt and review of a competitive renewal application that documents unequivocal progress during the first year of funding.)

Developmental Research Program Awards are intended to support a broad spectrum of innovative pilot projects applicable to human skin cancer risk, prevention, diagnosis, prognosis, or

treatment. To be funded, DRP projects must have promising translational research potential, i.e., direct application to human skin cancer, and there must be the expectation that they can evolve into, or be incorporated into, full projects with an unequivocal translational component funded either within this SPORE or as independent R01 (or equivalent) grants.

Application Deadline: September 6, 2013

[Learn More >>](#)

Susan G. Komen for the Cure Grant Opportunities

Career Catalyst Research Grants - Basic and Translational Research

This grant mechanism is appropriate for both basic or clinical fellows proposing research projects that are laboratory- or field- based and do not meet Komen's definition of clinical research. Studies focusing on quality of life or survivorship issues are not appropriate for this mechanism

Application Deadline: September 5, 2013

[Learn More >>](#)

Career Catalyst Research Grants - Clinical Research

This grant mechanism is appropriate for clinical (i.e. MD) fellows/faculty proposing clinical, patient-oriented research projects that involve direct interactions with human subjects/patients. This includes studies such as therapeutic interventions or clinical trials.

Application Deadline: September 5, 2013

[Learn More >>](#)

Postdoctoral Fellowship Grants - Basic and Translational Research

This grant mechanism is appropriate for both basic or clinical fellows proposing research projects that are laboratory- or field- based and do not meet Komen's definition of clinical research. Studies focusing on quality of life or survivorship issues are not appropriate for this mechanism.

Application Deadline: September 5, 2013

[Learn More >>](#)

Postdoctoral Fellowship Grants - Clinical Research

This grant mechanism is appropriate for clinical (i.e. MD) fellows proposing clinical, patient-oriented research projects that involve direct interactions with human subjects/patients. This includes studies such as therapeutic interventions or clinical trials.

Application Deadline: September 5, 2013

[Learn More >>](#)

Graduate Training in Disparities Research (GTDR)

GTDR Grants (formerly Post-Baccalaureate Training in Disparities Research Grants, PBTDR) are intended to establish and/or to sustain a training program for a minimum of three graduate students who are seeking careers dedicated to

understanding and eliminating disparities in breast cancer outcomes across population groups.

Application Deadline: September 5, 2013

[Learn More >>](#)

Employee Profile: Liora Lew, LCSW

The Employee Profile recognizes the diverse contributions made by Yale Cancer Center and Smilow Cancer Hospital staff to meet our patient care, research, education, and outreach goals. The staff profiled are examples of the great work being done here, and the dedication and values we possess.

To suggest someone to be profiled, please contact

Emily Fenton.

Liora Lew, LCSW for the Adult Sickle Cell Program at Smilow Cancer Hospital, works with patients with a rare disease that has many complications. The program started about a year and a half ago, and has seen great success in that time. Under the leadership of Dr. John D. Roberts, the program has helped to reduce the length of hospital stays for these patients, increase outpatient visits, and encourage patients with sickle cell disease to see themselves as more than their illness; Liora has played a huge role in this success.



While dealing with the physical pain associated with sickle cell disease, a hereditary blood disorder, there are also emotional, economic, and social pains. Liora works with this patient population, primarily minorities, to overcome these obstacles and have better outcomes in the community setting. One of the biggest issues she helps patients with is dependence on narcotics that are used to manage pain.

"It is wonderful to see the results and celebrate accomplishments and success with patients," said Liora. "My goal is to empower them and give them the dignity and respect that they deserve, along with tools and information they can use to cope with life as patients with a non-curable disease."

Since the program started, Liora has played an integral role in helping to decrease the length of in-patient stays. Liora and the team work closely with community providers to eliminate gaps in care at the time of discharge, to help ensure a life outside of the hospital for these patients. She worked to obtain a grant that provided the patients with educational materials resulting in a lending library as well as a Wii console, which has helped

patients to relieve stress and take their mind off of their pain. Additionally Liora facilitates a very successful bi-weekly support group.

Bonnie Indeck, LCSW, and Manager of Oncology Social Work at Smilow Cancer Hospital, commented, "Liora is dedicated to working with people with sickle cell disease and their family members. She has taken the time to build relationships, resulting in great respect for her in her role as clinical social worker. Liora's patients love to see her as she brings a sense of warmth and compassion and sees her patients as who they are and not their disease. Liora embodies Service Excellence and we are thrilled that she is a member of the Smilow family!"

Recent Publications

Comparison of Tomosynthesis Plus Digital Mammography and Digital Mammography Alone for Breast Cancer Screening.

Haas BM, Kalra V, Geisel J, Raghu M, Durand M, Philpotts LE. Radiology. 2013 Jul 30.

[Read More >>](#)

Changes in Specialists' Perspectives on Cancer Genetic Testing, Prophylactic Surgery and Insurance Discrimination: Then and Now.

Matloff ET, Bonadies DC, Moyer A, Brierley KL. J Genet Couns. 2013 Jul 13.

[Read More >>](#)

Is the use of preoperative breast MRI predictive of mastectomy?

Killelea BK, Grube BJ, Rishi M, Philpotts L, Tran EJ, Lannin DR. World J Surg Oncol. 2013 Jul 12;11:154.

[Read More >>](#)

Arpeggio: harmonic compression of ChIP-seq data reveals protein-chromatin interaction signatures.

Stanton KP, Parisi F, Strino F, Rabin N, Asp P, Kluger Y. Nucleic Acids Res. 2013 Jul 19.

[Read More >>](#)

TrAp: a tree approach for fingerprinting subclonal tumor composition

Strino F, Parisi F, Micsinai M, Kluger Y. Nucleic Acids Res. 2013 Jul 27.

[Read More >>](#)

The RAG2 C-terminus and ATM protect genome integrity by controlling antigen receptor gene cleavage

Chaumeil J, Micsinai M, Ntziachristos P, Roth DB, Aifantis I, Kluger Y, Deriano L, Skok JA.

Nat Commun. 2013 Jul 31;4:2231.

[Read More >>](#)

Improved survival modeling in cancer research using a reduced piecewise exponential approach.

Han G, Schell MJ, Kim J.
Stat Med. 2013 Jul 30.

[Read More >>](#)

A Clinical Model for Identifying Radiosensitive Tumor Genotypes in Non-Small Cell Lung Cancer.

Johung KL, Yao X, Li F, Yu JB, Gettinger SN, Goldberg S, Decker RH, Hess JA, Chiang VL, Contessa JN.
Clin Cancer Res. 2013 Jul 29.

[Read More >>](#)

Oncogenic PIK3CA gene mutations and HER2/neu gene amplifications determine the sensitivity of uterine serous carcinoma cell lines to GDC-0980, a selective inhibitor of Class I PI3 kinase and mTOR kinase (TORC1/2).

English DP, Bellone S, Cocco E, Bortolomai I, Pecorelli S, Lopez S, Silasi DA, Schwartz PE, Rutherford T, Santin AD.
Am J Obstet Gynecol. 2013 Jul 24.

[Read More >>](#)

Dietary fat intake and risk of pancreatic cancer in the Prostate, Lung, Colorectal and Ovarian Cancer Screening Trial.

Arem H, Mayne ST, Sampson J, Risch H, Stolzenberg-Solomon RZ. Ann Epidemiol. 2013 Jul 23.

[Read More >>](#)

High-risk human papillomavirus E6 inhibits monocyte differentiation to Langerhans cells.

Iijima N, Goodwin EC, Dimaio D, Iwasaki A.
Virology. 2013 Jul 17.

[Read More >>](#)

Radiation sensitivity and sensitization in melanoma.

Shahbazian D, Bindra RS, Kluger HM, Glazer PM.
Pigment Cell Melanoma Res. 2013 Jul 2

[Read More >>](#)

The calcium-sensing receptor in the breast.

Vanhouten JN, Wysolmerski JJ.
Best Pract Res Clin Endocrinol Metab. 2013 Jun;27(3):403-14.

[Read More >>](#)

Acute toxicity and risk of infection during total skin electron beam therapy for mycosis fungoides.

Lloyd S, Chen Z, Foss FM, Girardi M, Wilson LD.
J Am Acad Dermatol. 2013 Jul 9.

[Read More >>](#)

A Melanoma Brain Metastasis with a Donor-Patient Hybrid

Genome following Bone Marrow Transplantation: First Evidence for Fusion in Human Cancer.

Lazova R, Laberge GS, Duvall E, Spoelstra N, Klump V, Sznol M, Cooper D, Spritz RA, Chang JT, Pawelek JM.
PLoS One. 2013 Jun 26;8(6):e66731.

[Read More >>](#)