

May 11, 2012

Announcements

Cancer Survivors Day

Yale Cancer Center and Smilow Cancer Hospital at Yale-New Haven will celebrate Cancer Survivors Day with our patients and their families on Saturday, May 19th at Yale's West Campus. The event will begin at 11 AM with a keynote presentation by Carolyn Taylor, cancer survivor and founder of *Global Focus on Cancer*

This is a family friendly event, and I encourage you to bring your families and join in the celebration with our patients. Kids' activities will include a Moon Bounce, Video Game Truck, Ice Cream Truck, Arts and Crafts, and Human Hamster Balls.

At 12:00, we will host a picnic supper with entertainment by local band, *String Theorie*. Please encourage your patients to attend with their families.

[Learn More >>](#)

[RSVP to Attend >>](#)

Sarah Goldberg Joins Faculty

I am happy to announce that Dr. Sarah Goldberg has accepted a position as an Assistant Professor of Medicine (Medical Oncology). She will care for patients in the Thoracic Oncology Clinics on Smilow 4 and will focus her practice on expanding our clinical research opportunities for patients with lung cancer.

Dr. Goldberg joins us from Massachusetts General Hospital, where she is completing a research fellowship in thoracic oncology. She received her undergraduate degree from Tufts University and her Medical Degree from Mount Sinai School of Medicine. Dr. Goldberg did her internship and clinical fellowship in medical oncology at Massachusetts General Hospital. She will receive her MPH in Clinical Effectiveness from Harvard University later this month.

from the desk of

Thomas J. Lynch, Jr., MD

Director, Yale Cancer Center

Physician-in-Chief Smilow Cancer

Hospital at Yale-New Haven



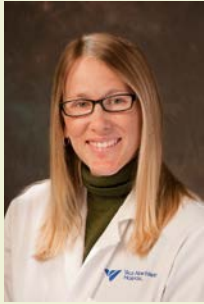
Countdown to the CCSG Submission

137 days

until our CCSG
grant is due on
September 25, 2012.

Join Yale Cancer
Center on Facebook

Like us on Facebook 



Terri Parker Accepts Position in Hematology

Dr. Terri Parker will join the faculty as an Assistant Professor of Medicine (Hematology) on July 1. Dr. Parker is a third-year fellow in our Medical Oncology-Hematology Fellowship Program and has made a positive impact on patient care since her arrival in 2009. Dr. Parker is a graduate of the University of Pittsburgh and received her Medical Degree from St. George's

University School of Medicine. She completed her internship and residency at the University of Connecticut and a fellowship at Connecticut Hospice before joining our program in 2009.

Yale Cancer Center Retreat - May 15

I am looking forward to seeing you at the annual Yale Cancer Center Retreat on Tuesday, May 15th from 7:30am-6:30pm, at the Waterview in Monroe, CT. The goal of our retreat is to foster scientific and social interactions among faculty, post-docs, and students affiliated with YCC.

[Download Agenda >>](#)

Lecture by Dr. Robert Croyle

Please save the date of Friday, May 18th for a visit and presentation by Dr. Robert Croyle, NCI Director of Cancer Control and Population Sciences, from 12-1pm at the Cohen Auditorium, Yale Child Study Center. Lunch will be served. We look forward to seeing you at this great presentation and exchange of ideas of the future of cancer research.

Notables

The Clinical Trials Office welcomes three new staff members to their team this month. **Jaime Selbie** has been hired as the new Clinical Trials Assistant for the Breast Team, **Miriam Akita** has joined the Lung Team as a Data Manager, and **Cheryl Fullerton** joined the office as a Clinical Research Nurse, working as a Floater and assisting the Head and Neck and Melanoma Teams.

Carmen Canales will be joining the Yale Cancer Center on May 21st as the accountant for clinical trials and clinical research. Carmen holds her MBA in Finance from Cornell University. Most recently Carmen was a Financial Analyst in the Yale School of Medicine Financial Operations Office.

Kelly Bob has joined the Yale Cancer Center Business office as an Account Assistant IV. She is responsible for coding and billing related to patient appointments.

Inside yalecancercenter.org

Cancer Survivors Day Invitation

[Learn More >>](#)

Research in Progress

Video presentations from Yale Cancer Center faculty on current research projects are now available online.

[Learn More >>](#)

In the News

Read recent articles featuring experts from Yale Cancer Center.

[Learn More >>](#)

Subscribe to Yale Cancer Center Answers on iTunes

Yale Cancer Center's weekly radio program on CT Public Radio is ranked number 2 in the world for cancer programs on iTunes. Subscribe to the show.

[Learn More >>](#)

In the News

Read recent articles featuring experts from Yale Cancer Center.

[Read More >>](#)

Subscribe to Yale Cancer Center Answers on iTunes

Yale Cancer Center's weekly radio program on CT Public Radio is ranked number 2 in the world for cancer programs on iTunes. Subscribe to the show.

[Learn More >>](#)

Yale Cancer Center Grand Rounds

Video presentations from Yale Cancer Center members are now available online.

[Learn More >>](#)

DirectConnect Archives

[Learn More >>](#)

Meena Moran, MD co-chaired the Breast Section of ASTRO's Annual Spring Refresher Course this past month in Chicago. Dr. Moran also presented the Early-Stage Breast Cancer Refresher Course at the meeting.

In the News

Getting Better: 200 Years of Medicine

A documentary from the *New England Journal of Medicine* featuring an interview with Dr. Vincent T. DeVita, Jr.



[Learn More >>](#)

Lung Cancer CME Dinner

Yale Cancer Center and Smilow Cancer Hospital welcomed 70 physicians and nurses for a CME dinner last night highlighting new advances in screening, diagnosis, and treatment of lung cancer.

Thank you to the members of the Thoracic Oncology Program who presented.

Events

May 11; 1 PM Molecular Virology Research Program Seminar

SHM I-116

*Imaging Retroviral
Pathogenesis: From Single
Molecules to Single Mice*

James Munro, PhD and Xaver
Sewald, PhD

[Learn More >>](#) (PDF)

May 11-14 3rd Annual Turner Cup: "2012 (WDSA) Women's Doubles Squash Benefit" to benefit Yale Cancer Center / Smilow Cancer Hospital

University Club and the New
York Athletic Club

[Learn More >>](#)

May 12; 9 AM Second Annual OCR Symposium

West Campus

*Yale Talks About Opportunities
in Drug Discovery &
Translational Medicine*

Yale Faculty

[Learn More >>](#) (PDF)

May 13; 6 PM Yale Cancer Center Answers

WNPR

Surgery for Endocrine Cancers
Tobias Carling, MD

[Learn More >>](#)

May 14; 12 PM PMYSM / Discovery to Cure Lecture Series

FMB 340

*Blood Biomarkers for Earlier
Detection of Ovarian Cancer*

Robert Zeillinger, PhD

[Learn More >>](#) (PDF)

May 14; 12 PM Yale PET Center/PET Talks

Brady Auditorium, B-131

*Histopathological Validation of
 β -Amyloid Targeting PET
Tracers: Lessons from the
Phase III Clinical Diagnostic
Trials*

John Seibyl, MD

[Learn More >>](#) (PDF)

May 15; 7:30 AM - 6:30 PM



Employee Profile: Debbie Klotzer

The Employee Profile recognizes the diverse contributions made by Yale Cancer Center and Smilow Cancer Hospital staff have to meet our patient care, research, education, and outreach goals. The staff profiled are examples of the great work being done here, and the dedication and values we possess. To suggest someone to be profiled, please contact [Emily Fenton](#).

Debbie Klotzer has been at Yale-New Haven Hospital for over 33 years, and 32 of those years have been spent working with Art Lemay, Executive Director of the Smilow Cancer Network. In her role as Executive Assistant for the Smilow Cancer Network, Debbie is responsible for providing high-level administrative support, whether it be facilitating and overseeing meeting collaborations, or planning and executing oncology-related events. Debbie is also the coordinator of the new Smilow Cancer Hospital patient welcome binder. The binder allows patients to keep names and contact information of their healthcare team, information relating to their cancer diagnosis, and supportive



Cancer Center Annual Retreat

The Waterview, Monroe, CT
[Learn More >>](#)

CANCELED

May 15; 12 PM

Cancer Center Grand Rounds

May 16; 7 AM

Research in Progress Meeting

WWW 208

Title: TBA

Erin Hofstatter, MD

[Learn More >>](#)

May 16; 1 PM

Cancer Immunology Research Program Seminar

Giarman room, SHM B-201

Bi-Directional Cross-Talk

Between Tumors and Immune

Microenvironment in Human

Cancer-New Targets and

Opportunities

Madhav Dhodapkar, MD

[Learn More >>](#) (PDF)

May 17; 9 AM

Therapeutic Radiology Grand Rounds

Smilow, Lower Level, Room E

Resident Case Presentations

James Yu, MD

[Learn More >>](#)

May 18; 12 PM

Cancer Prevention and Control Research Program Seminar

Cohen Auditorium/Yale Child

Study Center

Robert Croyle, PhD

[Learn More >>](#)

May 19; 10:30 AM

Yale Cancer Center & Smilow Cancer Hospital at Yale-New Haven Cancer Survivors Day

West Campus

Keynote lecture by Carolyn

Taylor, Fun-family activities,

and a barbecue lunch

[Learn More >>](#) (PDF)

May 20; 6 PM

Yale Cancer Center Answers

WNPR

Discovering New Treatments for

care resources, all in one binder.

Debbie commented, "Having personally had a family member go through a cancer diagnosis I know how overwhelming it can be, and this will minimize some of the anxiety."

Debbie acts as a liaison between the new Smilow Cancer Hospital Cancer Care Centers, the Smilow Cancer Hospital Network hospitals, and Art Lemay. She is also on the steering committee for the Closer to Free Ride and Co-Chair of the annual Head and Neck Cancer Screening Day and Bone Marrow Drive, among taking part in many other hospital committees and programs. "Being involved with cancer-related events is especially rewarding for me, because everyone's life is touched by cancer in one way or another, and to be a part of helping someone, if even just for that one day, is so gratifying," Debbie said.

Debbie commented that working as Art Lemay's assistant has been extremely rewarding. Having a strong work ethic, Art has encouraged her to grow and learn new things over the years.

Funding and Award Opportunities

Nominations are Open for the Schwartz Center Compassionate Caregiver Awards

The Schwartz Center for Compassionate Healthcare, a nonprofit organization dedicated to strengthening the relationship between patients and caregivers, is seeking nominations for its 2012 Schwartz Center Compassionate Caregiver Award. This prestigious award, given annually since 1999, recognizes caregivers and teams of caregivers who demonstrate extraordinary compassion for patients and families.

Nominees must be paid caregivers who work in a New England healthcare organization and have direct patient contact.

Nominations may be made by patients or family members or by healthcare professionals who work with the nominee. The winner receives a \$5,000 cash prize, and four finalists receive \$1,000 each.

Nomination Deadline: May 18, 2012

[Learn More >>](#)

Gabrielle's Angel Foundation for Cancer Research Medical Research Grants

To support the conduct of innovative and insightful medical research on the hematologic malignancies. Funds are provided for basic or clinical research that will lead to novel therapeutic approaches that could replace, or be used in

Cancer

Lieping Chen, MD, PhD

[Learn More >>](#)

May 20-21; 9 AM Yale Cancer Center 'Closer to Free' Event

1118 Whalley Ave

Westville's Pio's of Italy Cut-a-thon

[Learn More >>](#)

CANCELED

May 23; 7 AM

Research in Progress Meeting

May 24; 9 AM

Therapeutic Radiology Grand Rounds

Smilow, Lower Level, Room E

Imaging of Solitary Lung Nodules and Lung Cancer

Ami Rubinowitz, MD

[Learn More >>](#)

Employment Opportunities

Yale Cancer Center has several positions open.

Please share these opportunities with colleagues who may be interested in joining our team.

Genetic Counselor 2

Req# 16457

Coordinator 4: Project Manager

Req# 16563

CRN 2: Clinical Research Nurse

Req# 16345

CRN 3: Clinical Research Nurse

Manager

Req# 14923

Senior Administrative Assistant

Req# 16771

[Learn More >>](#)

Submissions

Please submit your recent publication and grant

combination with effective therapies for lymphoma, leukemia, and related cancers of the blood. For assistant professors with an MD or PhD. \$225,000 to be used over 3 years.

Internal Deadline: June 6, 2012

[Learn More >>](#)

Alex's Lemonade Stand Foundation Nurse Researcher Grant Opportunities

Explorer, Pathfinder, and Discovery Awards available for nurses to support pediatric oncology research and to improve nursing care for children with cancer.

Application Deadline: August 1, 2012

[Learn More >>](#)

Department of Defense Peer Reviewed Cancer Research Program Funding Opportunities

Visionary Postdoctoral Fellowship Award

Eligibility - Principal Investigator: M.D./Ph.D. graduate with a total of less than 4 years of postdoctoral research experience

Mentor(s): Independent investigator at the level of Assistant Professor or equivalent at the time of the award

Research must be in one or more of the FY12 PRCRP Topic Areas

Supports training of postdoctoral fellow in the laboratory of an early-career investigator (mentor) with expertise in one or more of the FY12 PRCRP Topic Areas

Supports training of postdoctoral fellow to include a budget option for research supplies

Applications must not address breast, prostate, lung (excluding mesothelioma), or ovarian cancer research

Career Development Award

Eligibility - Principal Investigator: Independent investigator at the level of Assistant Professor or equivalent at the time of the award.

Research with emphasis in discovery must be in one or more of the FY12 PRCRP Topic Areas.

Supports investigator in the early stages of their career.

Applications must not address breast, prostate, lung (excluding mesothelioma), or ovarian cancer research.

Pre-application Due Date: June 19, 2012

[Learn More >>](#)

Avon Safety Net Grant Opportunities

The Avon Foundation for Women "Safety Net" program supports public, community, and safety net hospitals and health care systems that provide breast care to low-income, at-risk, uninsured and underinsured individuals. The goal of this initiative is to support programs that improve access to quality breast diagnostics and access to treatment for the medically underserved. A demonstrated commitment to

announcements to:

Renee Gaudette

Director, Public Affairs and Marketing

renee.gaudette@yale.edu

 Forward to a Friend

providing health care to underserved populations will be considered in the review process.

Letter of Intent Due: June 22, 2012

[Learn More >>](#)

Yale School of Public Health Ovarian Cancer Research Grants

This annual award is made possible by a generous gift from the Tina Brozman Foundation. The award is to provide funding for a pilot project in ovarian cancer prevention, detection, and survivorship research, which would ultimately lead to national peer-reviewed grants. Professors, Associate Professors, Assistant Professors, and Research Track faculty of all ranks are eligible to apply. There are no restrictions for citizenship. A one-year grant up to \$25,000 will be awarded and will commence on July 1, 2012.

Application Deadline: May 31, 2012

[Learn More >>](#)

Ovarian Cancer Research Fund Grants

Program Project Development Grants (\$900,000)

provide funds for ovarian cancer research projects that may involve several investigators within one institution or collaborations between groups in multiple institutions.

Liz Tilberis Scholars awards (\$450,000) are for investigators in their first academic faculty appointment.

This award is open to physician-scientists (Gynecologic Oncology, Medical Oncology) and Ph.D. scientists.

Ann Schreiber Research Training Programs of

Excellence grant (\$75,000) funds post-doctoral trainees working in established ovarian cancer research groups.

Letters of Intent Due: May 29, 2012

[Learn More >>](#)

Department of Defense Lung Cancer Research Program Grants

Idea Development Award Independent investigators at or above the level of an Assistance Professor (or equivalent); must be within 10 years of first faculty appointment.

Supports new ideas that are in the early stages of development, which represent innovative, high-risk/high-gain research that could lead to critical discoveries or major advances that will accelerate progress toward eradicating deaths from lung cancer.

Maximum funding of \$350K for direct costs (plus indirect costs).

Maximum period of performance is 2 years.

Translational Research Partnership Award

Investigators at or above the level of Assistant Professor (or equivalent).

Partnership: One investigator must be a laboratory scientist, and the other must be a clinician.

Supports partnership[s] between clinicians and laboratory scientists that accelerate the movement of promising ideas in lung cancer into clinical applications.

Preliminary data required, but may be from outside of lung cancer.

Clinical trials are not allowed.

Maximum combined funding of \$900K for direct costs (plus indirect costs).

Maximum period of performance is 3 years.

Pre-Application Deadline: May 30, 2012

[Learn More >>](#)

Interagency Oncology Task Force Fellowship Opportunity

The Interagency Oncology Task Force (IOTF), a joint initiative between The National Cancer Institute (NCI) and the U.S. Food and Drug Administration (FDA), is now accepting applications for program 3: Oncology Product Research/Review Fellows.

This is a unique fellowship training opportunity for Ph.D.s, M.D.s, and M.D./Ph.D.s with three to five years of postdoctoral training in a cancer-related topic.

This fellowship will train individuals in the aspects of research and review of medical product development process to facilitate the movement of drugs, biologics, and devices from the bench to the bedside. Participants will spend up to two years at FDA and receive formal training and mentoring, and will participate in medical product development research projects. Graduates of this program will develop skills of value to academia, the pharmaceutical industry, and government agencies.

Application Deadline: May 30, 2012

[Learn More >>](#)

Recent Publications

Ipilimumab in Combination With Paclitaxel and Carboplatin As First-Line Treatment in Stage IIIB/IV Non-Small-Cell Lung Cancer: Results From a Randomized, Double-Blind, Multicenter Phase II Study.

Lynch TJ, Bondarenko I, Luft A, Serwatowski P, Barlesi F, Chacko R, Sebastian M, Neal J, Lu H, Cuillerot JM, Reck M. J Clin Oncol. 2012 Apr 30.

[Read More >>](#)

Current Cardiology Reviews: Volume 7, Number 4

Guest Editor: Maysa Abu-Khalaf

Authors: Erin Hofstatter, Tish Knobf, Kerry Russell, Raymond Russell.

[Read More >>](#)

Cortactin in cell migration and cancer at a glance.

Macgrath SM, Koleske AJ.
J Cell Sci. 2012 Apr 1;125(Pt 7):1621-6.

[Read More >>](#)

Current concepts in pediatric liver tumors.

Emre S, Umman V, Rodriguez-Davalos M.
Pediatr Transplant. 2012 May 4.

[Read More >>](#)

Lull1 parvovirus selectively and efficiently targets, replicates in, and kills human glioma.

Paglino JC, Ozduman K, van den Pol AN.
J Virol. 2012 May 2.

[Read More >>](#)

PTHrP and breast cancer: more than hypercalcemia and bone metastases.

Boras-Granic K, Wysolmerski JJ.
Breast Cancer Res. 2012 Apr 25;14(2):307.

[Read More >>](#)

Management of Ovarian and Testicular Sex Cord-stromal Tumors in Children and Adolescents.

Schultz KA, Schneider DT, Pashankar F, Ross J, Frazier L.
J Pediatr Hematol Oncol. 2012 May;34 Suppl 2:S55-63.

[Read More >>](#)

Development of a Therapeutic Approach to Rare Cancers in Children: The Children's Oncology Group Experience.

Pashankar FD, Rodriguez-Galindo C, Pappo A.
J Pediatr Hematol Oncol. 2012 May;34 Suppl 2:S37-8.

[Read More >>](#)

Pralatrexate Is an Effective Treatment for Relapsed or Refractory Transformed Mycosis Fungoides: A Subgroup Efficacy Analysis From the PROPEL Study.

Foss F, Horwitz SM, Coiffier B, Bartlett N, Popplewell L, Pro B, Pinter-Brown LC, Shustov A, Furman RR, Haioun C, Koutsoukos T, O'Connor OA.

Clin Lymphoma Myeloma Leuk. 2012 Apr 25.

[Read More >>](#)

Inhibition of the mTORC2 and chaperon pathways to treat leukemia.

Zhang F, Lazorchak AS, Liu D, Chen F, Su B.
Blood. 2012 May 7.

[Read More >>](#)

A strategy for selective O(6) -alkylguanine-DNA alkyltransferase depletion under hypoxic conditions.

Penketh PG, Shyam K, Baumann RP, Ishiguro K, Patridge EV,

Zhu R, Sartorelli AC.
Chem Biol Drug Des. 2012 May 3.
[Read More >>](#)

Downregulation of membrane complement inhibitors CD55 and CD59 by siRNA sensitises uterine serous carcinoma overexpressing Her2/neu to complement and antibody-dependent cell cytotoxicity in vitro: implications for trastuzumab-based immunotherapy.

Bellone S, Roque D, Cocco E, Gasparrini S, Bortolomai I, Buza N, Abu-Khalaf M, Silasi DA, Ratner E, Azodi M, Schwartz PE, Rutherford TJ, Pecorelli S, Santin AD.

Br J Cancer. 2012 Apr 24;106(9):1543-50.

[Read More >>](#)