

August 17, 2012

Announcements

Yale SPORE in Skin Cancer Renewed

I am very pleased to announce that the National Cancer Institute has renewed its funding of the Yale SPORE in Skin Cancer grant for an additional 5 years, and a total of \$11.5 million.

Congratulations to Ruth Halaban and the entire SPORE team on their accomplishment! We have seen exciting developments from the research funded through our SPORE in Skin Cancer over the last five years and are thrilled to be able to continue this important work with the help of the National Cancer Institute.

[Learn More >>](#)

Yale Cancer Center Oncology CME Series: Gastrointestinal Cancers

Please join us for our fourth session in the Yale Cancer Center Oncology CME Series, focused on Gastrointestinal Malignancies, on Thursday, September 20 at 5:00 PM in Smilow Cancer Hospital.

[Review Agenda >>](#)

[Register to Attend >>](#)

Notables

Andrew Phillips, PhD, has been awarded a \$2.5 million grant from the National Cancer Institute, to investigate novel approaches to treating cancers previously thought "undruggable." Dr. Phillips is a member of the Yale Cancer Center Developmental Therapeutics Program. Dr. Alana Schepartz is the co-Principal Investigator on the grant, along with Dr. Phillips.

[Learn More >>](#)

Dell Yarbrough, MD will be running in the American Cancer

from the desk of

Thomas J. Lynch, Jr., MD

Director, Yale Cancer Center

Physician-in-Chief Smilow Cancer

Hospital at Yale-New Haven



SMILOW CANCER HOSPITAL
AT YALE-NEW HAVEN

Yale CANCER
CENTER

A Comprehensive Cancer Center Designated
by the National Cancer Institute

Countdown to the CCSG Submission

39 days

until our CCSG
grant is due on
September 25, 2012.

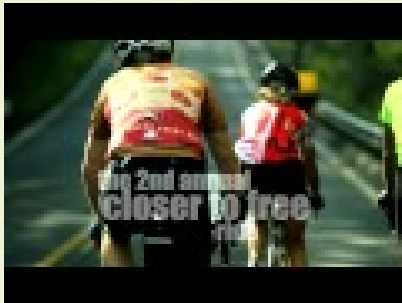
Join Yale Cancer
Center on Facebook

Like us on Facebook 

Society's Hood to Coast Relay in Oregon on August 24 to support the Head and Neck Cancer Alliance.

Closer to Free

Closer to Free Bike Ride
Join us on September 8, 2012



[Learn More >>](#)

Employee Profile: Nicole Edwards

The Employee Profile recognizes the diverse contributions made by Yale Cancer Center and Smilow Cancer Hospital staff have to meet our patient care, research, education, and outreach goals. The staff profiled are examples of the great work being done here, and the dedication and values we possess. To suggest someone to be profiled, please contact [Emily Fenton](#).



Inside yalecancercenter.org

CV Library

The CV library is a new resource available to our members, with CVs of post-docs and others looking for positions at Yale. Please browse the listings if you have openings, and send the CVs you receive to share.

[Learn More >>](#)

Research in Progress

Video presentations from Yale Cancer Center faculty on current research projects are now available online.

[Learn More >>](#)

In the News

Read recent articles featuring experts from Yale Cancer Center.

[Learn More >>](#)

Subscribe to Yale Cancer Center Answers on iTunes

Yale Cancer Center's weekly radio program on CT Public Radio is ranked number 2 in the world for cancer programs on iTunes. Subscribe to the show.

[Learn More >>](#)

Yale Cancer Center Grand Rounds

Video presentations from Yale Cancer Center members are now available online.

[Learn More >>](#)

DirectConnect Archives

[Learn More >>](#)

Events

August 19; 6:00 PM

WNPR

Yale Cancer Center Answers

Experimental Therapeutics

Paul Eder, MD

[Learn More >>](#)

Behind the scenes at the Yale Cancer Center Cancer Genetic Counseling Program, Office Manager Nicole Edwards makes sure that everything is running smoothly. She is in charge overseeing the day-to-day operations of the office as well as the clinic. She manages the workflow of a small staff and ensures that every patients needs are met. Her day can consist of scheduling patients for appointments, ordering supplies for the office, scheduling meetings, triaging incoming calls as well as managing the busy schedule for the Director of the program.

When a patient comes to the Genetic Counseling Program, they usually require three separate visits. Nicole makes sure that patients are seen in a timely fashion that works with their schedules. She also sends out appointment reminders and letters to their general practitioner if needed. This is Nicole's first year working in the Genetic Counseling Program. She wanted to work in an area where she could interact with patients, which has been her passion since coming to Yale almost 15 years ago.

"This is a unique service being offered that is important not only for the patient coming to see us, but for their families as well. Seeing patients come in that are sick, puts my own life challenges and difficulties into perspective. It is rewarding to be a part of their experience and to be able to help them if they need anything along the way," Nicole said.

Ellen Matloff, CGC, Research Scientist in the Department of Genetics and Director of the Yale Cancer Center Cancer Genetic Counseling Program commented, "Nicole has revolutionized our office and taken the entire program to the next level. Many of our patients are scared, anxious or upset and Nicole is a professional, kind, calming force for them from the minute they walk in the door. She knows what these people are going through and she truly cares about them and for them. We were so lucky to add Nicole to our program team."

Funding Opportunities

Susan G. Komen Challenge Grants: Breast Cancer and the Environment

The Challenge grants seek to address key research needs in the field of environmental contributions to breast cancer risk. Several opportunities and funding levels are being offered.

Scientific Focus:

- * Studies of Occupational Cohorts and Other Highly Exposed Populations
- * New Exposure Assessment Tools
- * Minimizing Exposure to Ionizing Radiation

Letter of Intent Deadline: September 10, 2012

[Learn More >>](#)

August 23; 9:00 AM

Smilow Lower Level Room E
Therapeutic Radiology Grand Rounds

Operating in Eloquent Brain

Joseph Piepmeier, MD

[Learn More >>](#)

August 26; 6:00 PM

WNPR

Yale Cancer Center Answers

Thoracic Cancers

Jonathan Puchalski, MD

[Learn More >>](#)

August 30; 9:00AM

Smilow Lower Level Room E
Therapeutic Radiology Grand Rounds

Controversies in Prostate Cancer: Screening, Protons, and the Bending of the Cost Curve

James B. Yu, MD

[Learn More >>](#)

Employment Opportunities

Yale Cancer Center has several positions open.

Please share these opportunities with colleagues who may be interested in joining our team.

Clinical Secretary
Req# 17600

Data Manager
Req# 16340

CRN 2: Clinical Research Nurse
Req# 17202

Assistant Administrator
Req# 17846

Financial Analyst
Req# 17140

[Learn More >>](#)

Burroughs Wellcome Fund Career Awards

- * For physician-scientists who will have completed at least 2 years of postdoctoral research training by October 1, 2012.
- * The last doctoral degree should have been received not more than 10 years prior to the application date.
- * Candidates must be citizens or permanent residents of the U.S. or Canada as of the application date.
- * Awards provide bridging support for 1-2 years of advanced postdoctoral training and the initial 3-4 years of a faculty appointment.
- * 75% of time must be devoted to research.
- * \$700,000 over a period of 5 years. (\$700,000)

Application Deadline: August 30, 2012

[Learn More >>](#)

Hartwell Foundation Biomedical Research Award

For early-stage, innovative, cutting-edge, and high risk biomedical research that has the potential to be transformative. The proposed research should not yet have qualified for significant funding from outside sources. Research should benefit children, particularly in the U.S. \$100,000 per year for 3 years. (\$300,000)

Internal Deadline: September 7, 2012

[Learn More >>](#)

Alex's Lemonade Stand Foundation Epidemiology Grants

These grants are designed to support the research of investigators who have a specific focus on the epidemiology, early detection or the prevention of childhood cancer. ALSF will award support to established investigators who have a track record of peer-reviewed publications in relevant areas. These awards are expected to provide additional funds that will allow investigators to pursue novel and promising epidemiological approaches to understanding the cause of childhood cancers and how such insight can be used for early detection or prevention of childhood cancer.

Application Deadline: December 17, 2012

[Learn More >>](#)

Gabrielle's Angels Foundation

Gabrielle's Angel Foundation funds the nation's best science in the fields of leukemia, lymphoma, and related cancers of the blood. The Foundation not only funds conventional scientific research, but also projects that combine integrative (complementary) therapies or botanical agents. We focus on projects for cancer prevention, detection and treatment that are most likely to be translated into clinical trials within a 3-5 year period. These Medical Research Awards, distributed on a yearly basis, each total \$225,000.00 and are given over a

Submissions

Please submit your recent publication and grant announcements to:

Renee Gaudette

Director, Public Affairs and Marketing

renee.gaudette@yale.edu

 Forward to a Friend

three-year period.

Application Deadline: September 12, 2012

[Learn More >>](#)

Alex's Lemonade Stand Foundation "A" Awards in Pediatric Research

The foundation's "A" Award is a three-year grant designed for young scientists who want to jump-start their careers in pediatric oncology research. The program seeks to encourage the best and brightest young researchers to build lifelong careers and become leaders in the pediatric cancer field, and to further research that will lead to cures for children with cancer.

Application Deadline: September 17, 2012

[Learn More >>](#)

Recent Publications

In situ measurement of miR-205 in malignant melanoma tissue supports its role as a tumor suppressor microRNA.

Hanna JA, Hahn L, Agarwal S, Rimm DL.

Lab Invest. 2012 Aug 13.

[Learn More >>](#)

A Phase I Study of Erlotinib and Hydroxychloroquine in Advanced Non-Small-Cell Lung Cancer.

Goldberg SB, Supko JG, Neal JW, Muzikansky A, Digumarthy S, Fidias P, Temel JS, Heist RS, Shaw AT, McCarthy PO, Lynch TJ, Sharma S, Settleman JE, Sequist LV.

J Thorac Oncol. 2012 Aug 8.

[Learn More >>](#)

Measurement of Aldehyde Dehydrogenase 1 Expression Defines a Group with Better Prognosis in Patients with Non-Small Cell Lung Cancer.

Dimou A, Neumeister V, Agarwal S, Anagnostou V, Syrigos K, Rimm DL.

Am J Pathol. 2012 Aug 6.

[Learn More >>](#)

Hypofractionated radiation therapy for prostate cancer: risks and potential benefits in a fiscally conservative health care system.

Aneja S, Pratiwadi RR, Yu JB.

Oncology (Williston Park). 2012 Jun;26(6):512-8.

[Learn More >>](#)

Integrative Analysis of Cancer Prognosis Data With Multiple Subtypes Using Regularized Gradient Descent.

Ma S, Zhang Y, Huang J, Huang Y, Lan Q, Rothman N, Zheng T.

Genet Epidemiol. 2012 Jul 31.

[Learn More >>](#)

Adverse events in cancer genetic testing: medical, ethical, legal, and financial implications.

Brierley KL, Blouch E, Cogswell W, Homer JP, Pencarinha D, Stanislaw CL, Matloff ET.

Cancer J. 2012 Jul;18(4):303-9.

[Learn More >>](#)

From the guest editor: cancer genetic counseling and testing: past, present, and future.

Matloff ET.

Cancer J. 2012 Jul;18(4):285-6.

[Learn More >>](#)

Stereotactic Body Radiotherapy for Central Lung Tumors.

Rowe BP, Boffa DJ, Wilson LD, Kim AW, Detterbeck FC, Decker RH.

J Thorac Oncol. 2012 Jul 26.

[Learn More >>](#)

Perceptions of roles, practice patterns, and professional growth opportunities.

McCorkle R, Engelking C, Lazenby M, Davies MJ, Ercolano E, Lyons CA.

Clin J Oncol Nurs. 2012 Aug 1;16(4):382-7.

[Learn More >>](#)

Exome sequencing identifies recurrent somatic RAC1 mutations in melanoma.

Krauthammer M, Kong Y, Ha BH, Evans P, Bacchiocchi A, McCusker JP, Cheng E, Davis MJ, Goh G, Choi M, Ariyan S, Narayan D, Dutton-Regester K, Capatana A, Holman EC, Bosenberg M, Szol M, Kluger HM, Brash DE, Stern DF, Materin MA, Lo RS, Mane S, Ma S, Kidd KK, Hayward NK, Lifton RP, Schlessinger J, Boggon TJ, Halaban R.

Nat Genet. 2012 Jul 29.

[Learn More >>](#)

Characteristics Associated With the Use of Nonanatomic Resections Among Medicare Patients Undergoing Resections of Early-Stage Lung Cancer.

Kim AW, Detterbeck FC, Boffa DJ, Decker RH, Soulos PR, Cramer LD, Gross CP.

Ann Thorac Surg. 2012 Jul 24.

[Learn More >>](#)

Outcomes for Lung Transplantation for Lung Cancer in the United Network for Organ Sharing Registry.

Ahmad U, Wang Z, Bryant AS, Kim AW, Kukreja J, Mason DP, Bermudez CA, Detterbeck FC, Boffa DJ.

Ann Thorac Surg. 2012 Jul 24.

[Learn More >>](#)

Spatial spectral imaging as an adjunct to the Bethesda classification of thyroid fine-needle aspiration specimens.

Hahn LD, Hoyt C, Rimm DL, Theoharis C.
Cancer Cytopathol. 2012 Jul 25.

[Learn More >>](#)

The impact of county-level radiation oncologist density on prostate cancer mortality in the United States.

Aneja S, Yu JB.
Prostate Cancer Prostatic Dis. 2012 Jul 24.

[Learn More >>](#)

Functional Study of Risk Loci of Stem Cell-associated Gene Lin-28B and Associations with Disease Survival Outcomes in Epithelial Ovarian Cancer.

Lu L, Katsaros D, Mayne ST, Risch HA, Benedetto C, Canuto EM, Yu H.
Carcinogenesis. 2012 Jul 26.

[Learn More >>](#)

Management of brain metastases: surgery, radiation, or both?

Patel TR, Knisely JP, Chiang VL.
Hematol Oncol Clin North Am. 2012 Aug;26(4):933-47.

[Learn More >>](#)

Complications of brain tumors and their treatment.

Lacy J, Saadati H, Yu JB.
Hematol Oncol Clin North Am. 2012 Aug;26(4):779-96.

[Learn More >>](#)